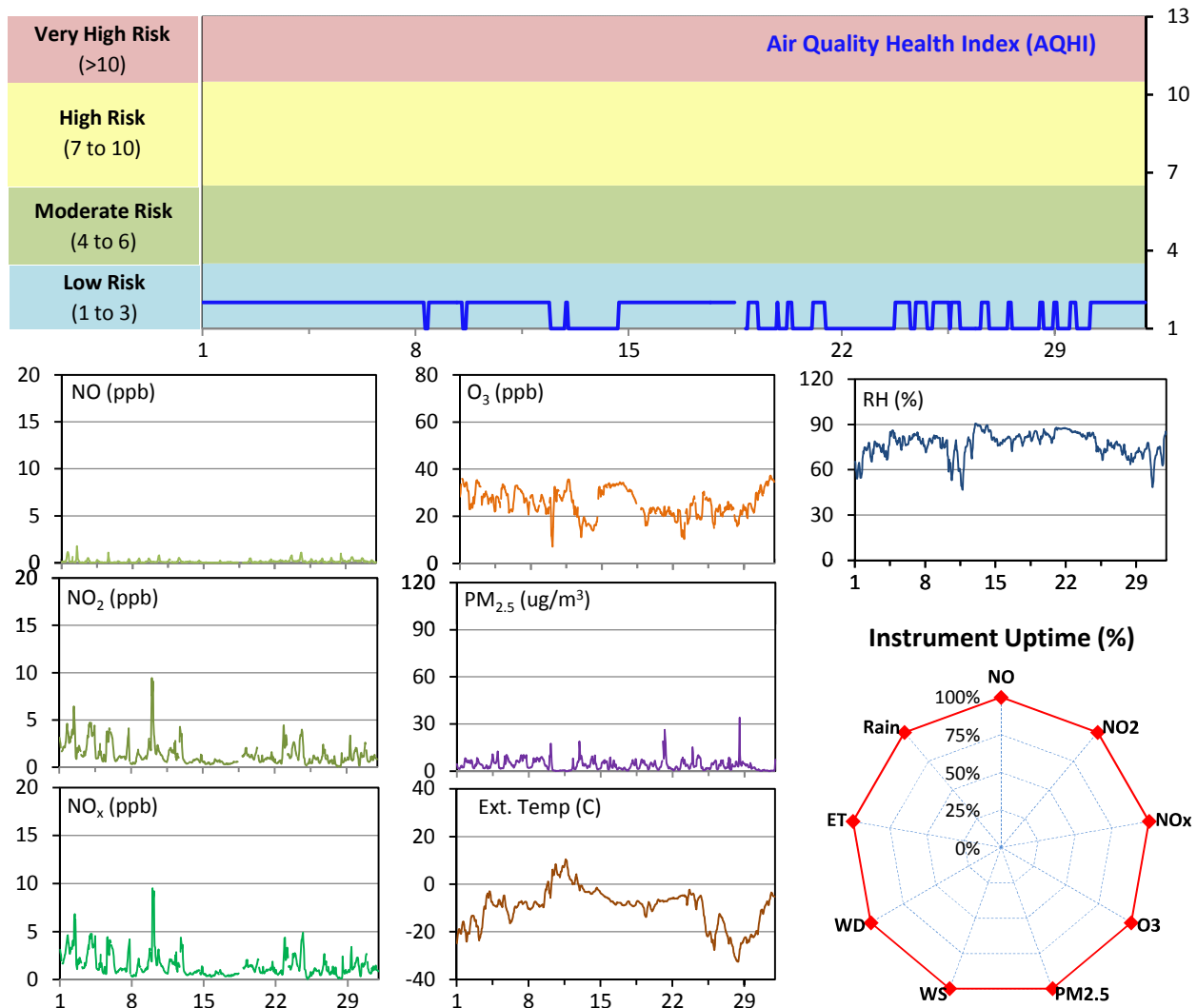


WYAMZ Meadow Lake Station - December 2014 Summary Report

| Pollutants | | Month Records | | 24-Hour Records | | | | 1-Hour Records | | | |
|-------------------|------------|---------------|--------|-----------------|--------|-----------------|-------------|----------------|--------------|-----------------|--------------|
| Name | Conc. Unit | Avg. Conc. | Uptime | Maximum | | SAAQS Objective | Exceed Days | Maximum | | SAAQS Objective | Exceed Hours |
| | | | | Conc. | Time | | | Conc. | Time | | |
| NO | ppb | 0.1 | 99.9% | 0.3 | Dec-24 | - | - | 1.8 | Dec-02 12:00 | - | - |
| NO ₂ | ppb | 1.4 | 99.9% | 3.2 | Dec-10 | - | - | 9.4 | Dec-10 00:00 | 212 | 0 |
| NO _x | ppb | 1.5 | 99.9% | 3.4 | Dec-10 | - | - | 9.5 | Dec-10 00:00 | - | - |
| O ₃ | ppb | 26 | 99.9% | 35 | Dec-31 | - | - | 37 | Dec-31 14:00 | 82 | 0 |
| PM _{2.5} | ug/m3 | 4 | 99.9% | 7 | Dec-7 | 30 | 0 | 34 | Dec-28 12:00 | - | - |

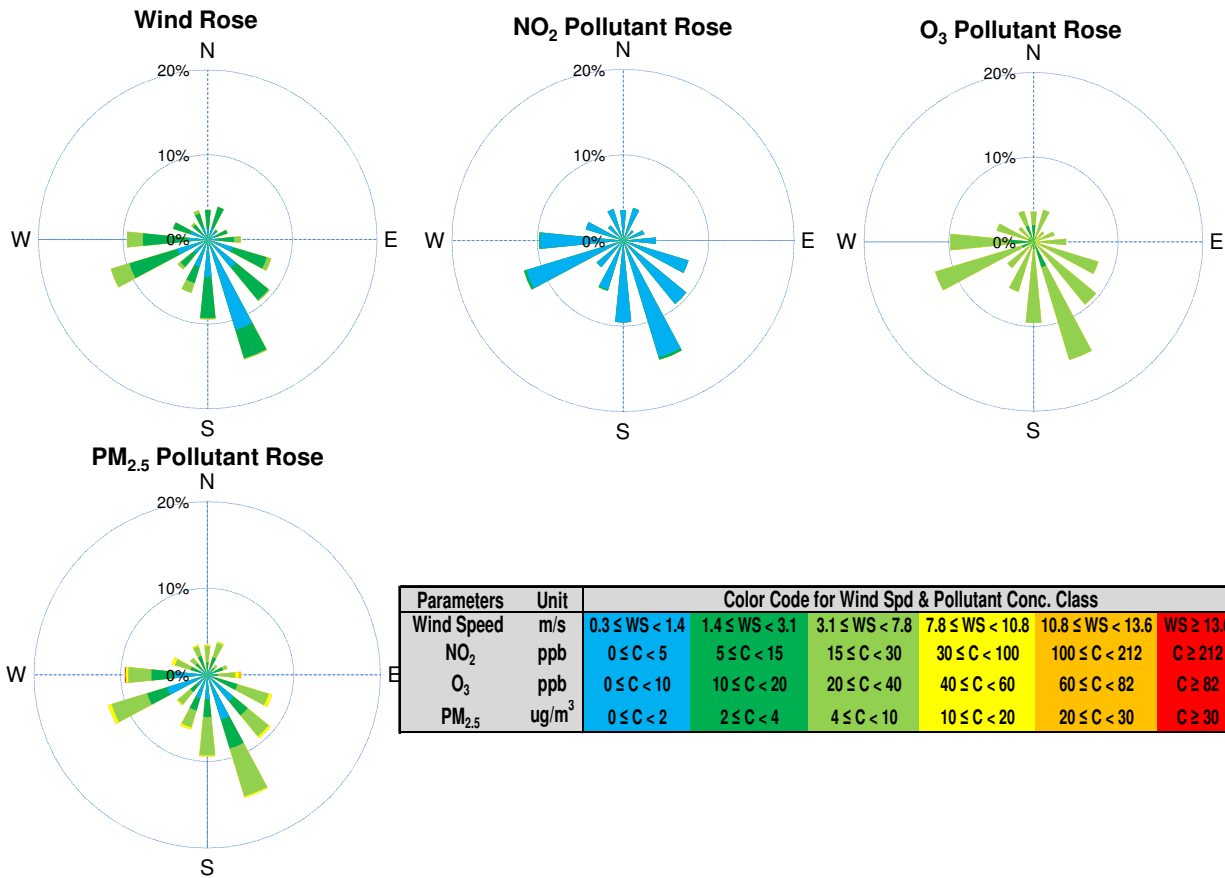
SAAQS: Saskatchewan Ambient Air Quality Standards



Monthly Update

- *All data has been slope, intercept, and baseline corrected. Data may change after validation process.
- *All compliance parameters were within the Saskatchewan Ambient Air Quality Standards.
- *All compliance parameters were greater than 90% operational.
- *There is one hour of data for all parameters flagged as "power failure" on Dec 21, due to a power disruption.
- *Routine quarterly calibration took place on Dec 18.

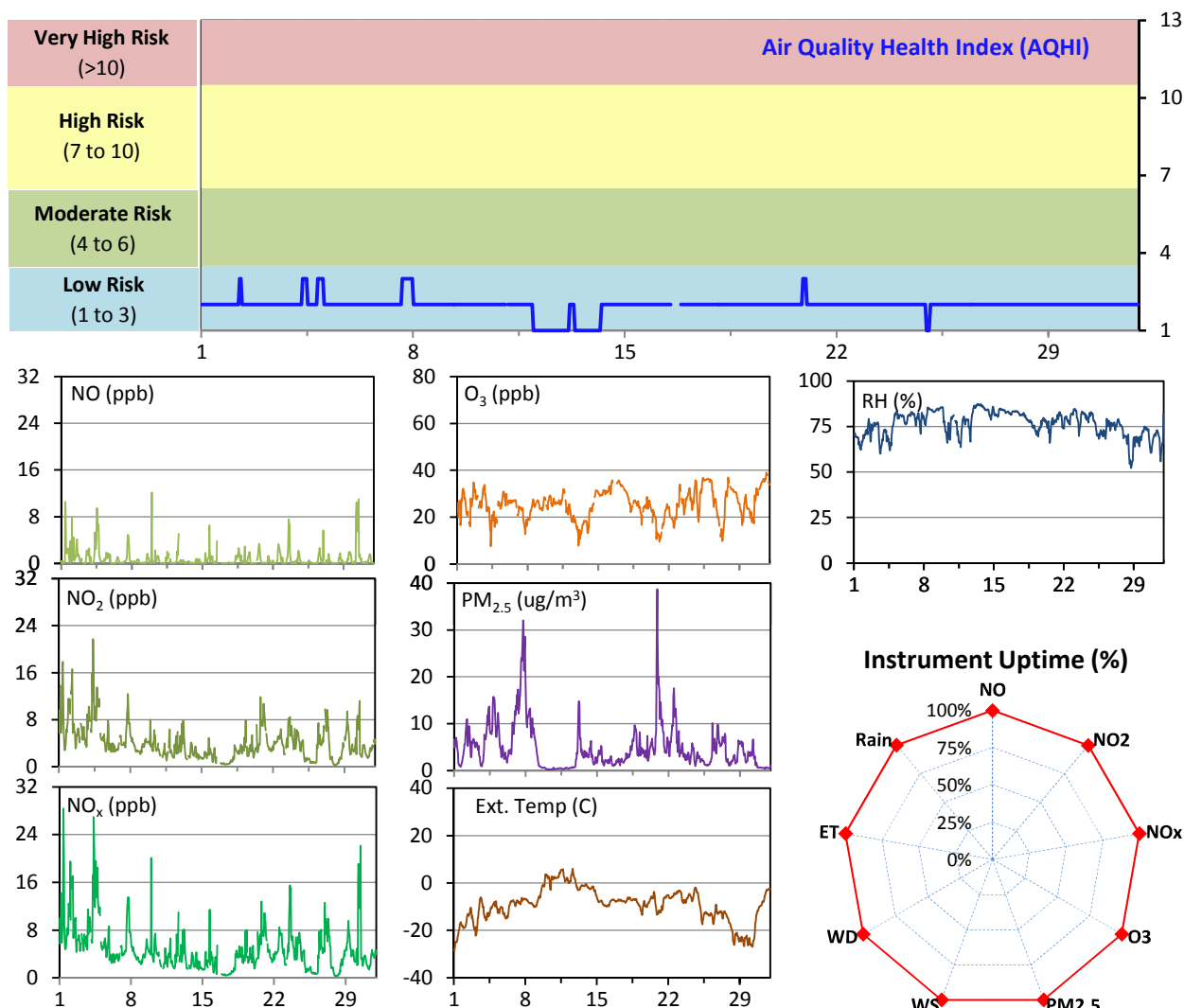
WYAMZ Meadow Lake Station - December 2014 Summary Report



WYAMZ Unity Station - December 2014 Summary Report

| Pollutants | | Month Records | | 24-Hour Records | | | | 1-Hour Records | | | |
|-------------------|------------|---------------|--------|-----------------|--------|-----------------|-------------|----------------|--------------|-----------------|--------------|
| Name | Conc. Unit | Avg. Conc. | Uptime | Maximum | | SAAQS Objective | Exceed Days | Maximum | | SAAQS Objective | Exceed Hours |
| | | | | Conc. | Time | | | Conc. | Time | | |
| NO | ppb | 0.8 | 99.6% | 3.0 | Dec-30 | - | - | 12.1 | Dec-09 23:00 | - | - |
| NO ₂ | ppb | 4.0 | 99.6% | 10.7 | Dec-4 | - | - | 21.7 | Dec-04 08:00 | 212 | 0 |
| NO _x | ppb | 4.8 | 99.6% | 13.5 | Dec-4 | - | - | 28.4 | Dec-01 09:00 | - | - |
| O ₃ | ppb | 25 | 99.7% | 36 | Dec-31 | - | - | 39 | Dec-31 16:00 | 82 | 0 |
| PM _{2.5} | ug/m3 | 5 | 99.7% | 20 | Dec-7 | 30 | 0 | 39 | Dec-20 21:00 | - | - |

SAAQS: Saskatchewan Ambient Air Quality Standards



Monthly Update

*All data has been slope, intercept, and baseline corrected. Data may change after validation process.

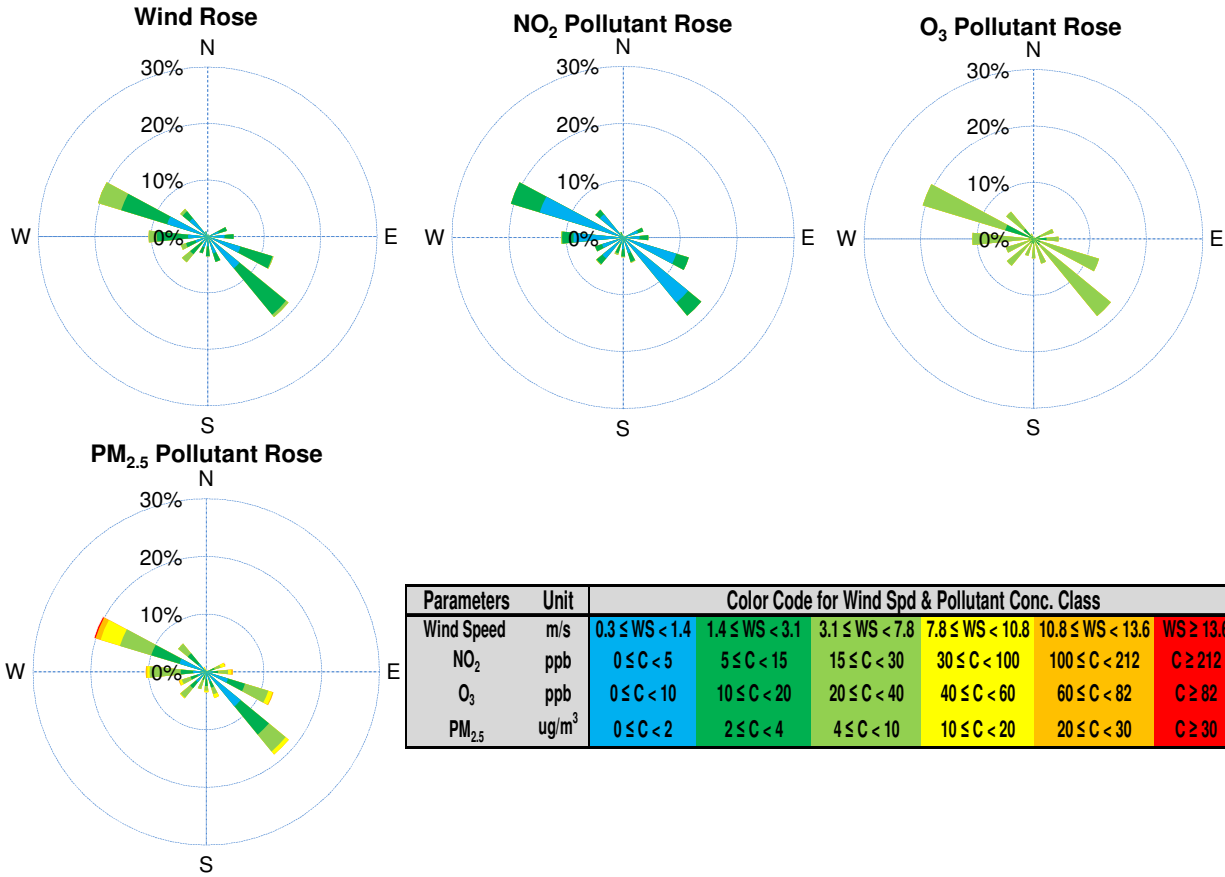
*All compliance parameters were within the Saskatchewan Ambient Air Quality Standards.

*All compliance parameters are above 90% operational.

*3 hours of NO/NO₂/NO_x data, and 2 hours for all other parameters is flagged as "power failure" on Dec 11 due to a power disruption.

*Routine quarterly calibration took place on Dec 16.

WYAMZ Unity Station - December 2014 Summary Report

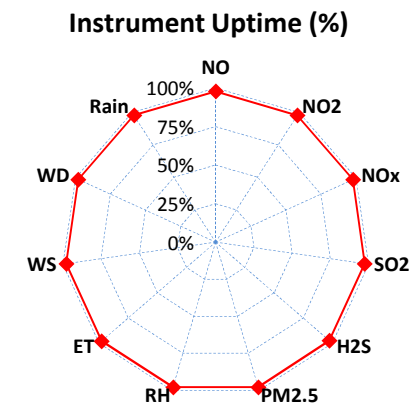
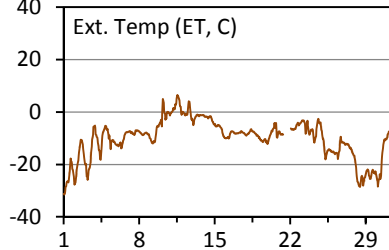
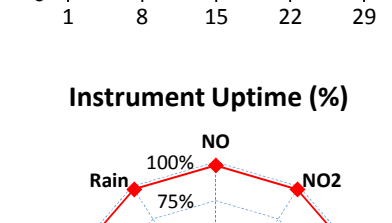
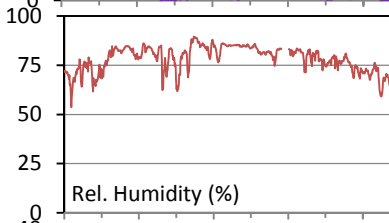
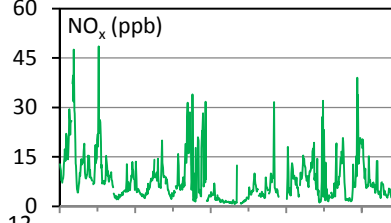
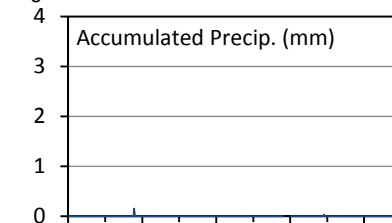
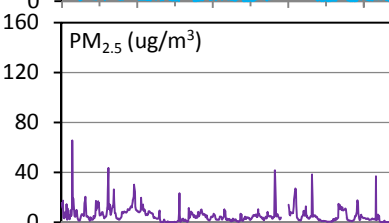
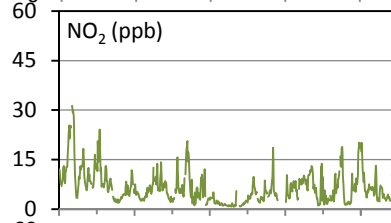
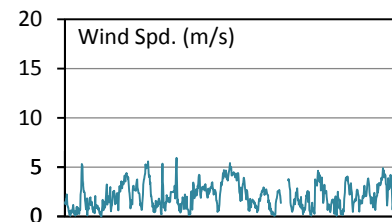
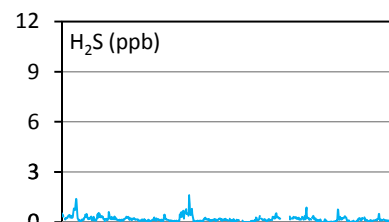
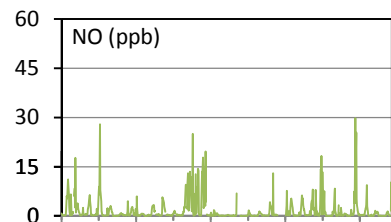
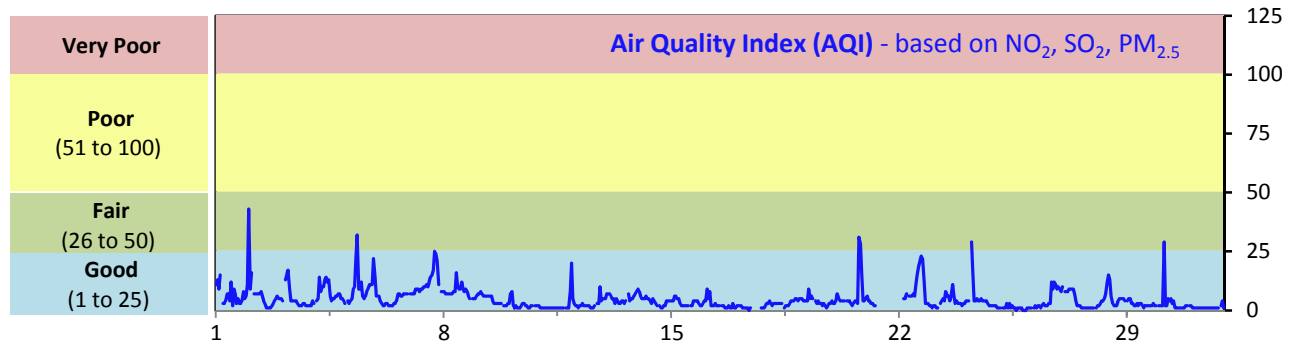


| Parameters | Unit | Color Code for Wind Spd & Pollutant Conc. Class | | | | | |
|-------------------|-------------------|---|----------------|----------------|-----------------|------------------|-----------|
| Wind Speed | m/s | 0.3 ≤ WS < 1.4 | 1.4 ≤ WS < 3.1 | 3.1 ≤ WS < 7.8 | 7.8 ≤ WS < 10.8 | 10.8 ≤ WS < 13.6 | WS ≥ 13.6 |
| NO ₂ | ppb | 0 ≤ C < 5 | 5 ≤ C < 15 | 15 ≤ C < 30 | 30 ≤ C < 100 | 100 ≤ C < 212 | C ≥ 212 |
| O ₃ | ppb | 0 ≤ C < 10 | 10 ≤ C < 20 | 20 ≤ C < 40 | 40 ≤ C < 60 | 60 ≤ C < 82 | C ≥ 82 |
| PM _{2.5} | ug/m ³ | 0 ≤ C < 2 | 2 ≤ C < 4 | 4 ≤ C < 10 | 10 ≤ C < 20 | 20 ≤ C < 30 | C ≥ 30 |

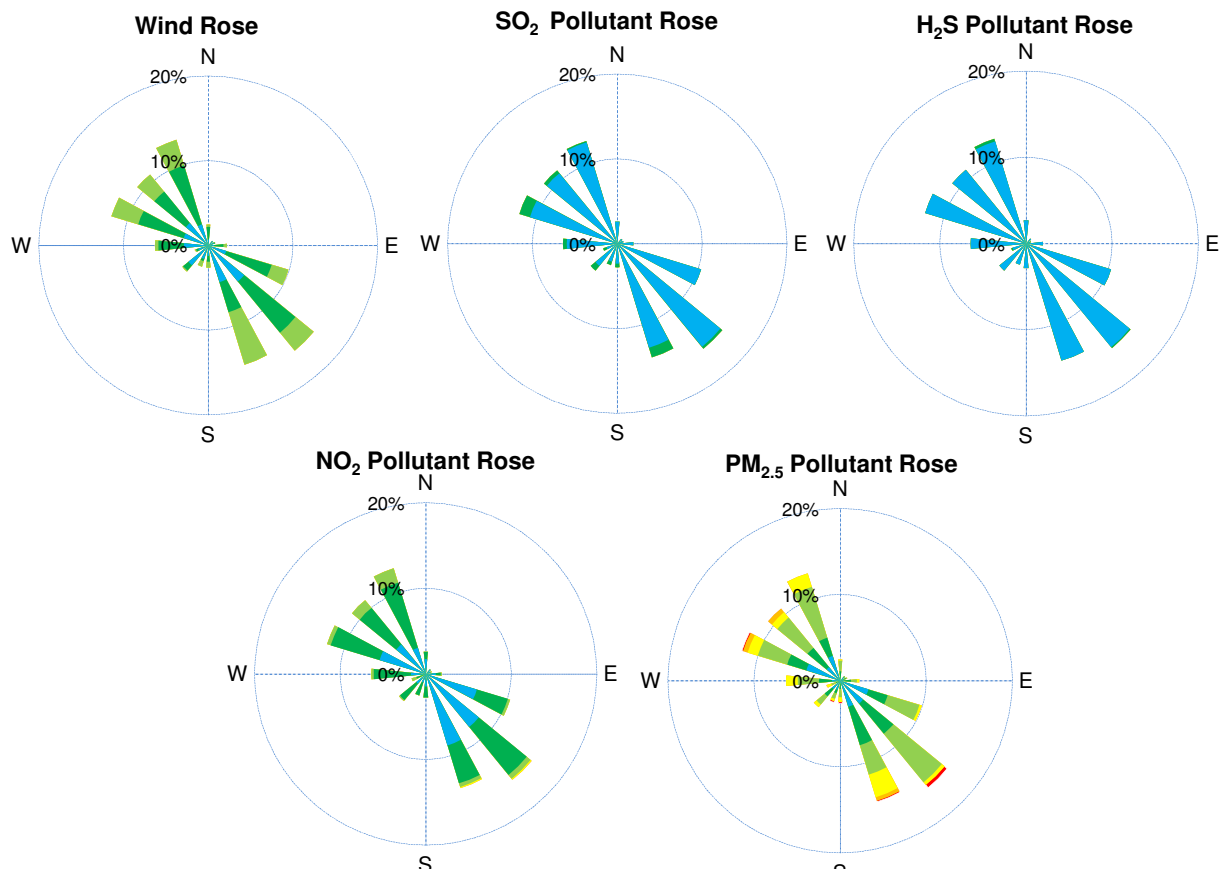
WYAMZ Maidstone Station - December 2014 Summary Report

| Pollutants | | Month Records | | 24-Hour Records | | | | 1-Hour Records | | | |
|-------------------|------------|---------------|--------|-----------------|--------|-----------------|-------------|----------------|--------------|-----------------|--------------|
| Name | Conc. Unit | Avg. Conc. | Uptime | Maximum | | SAAQS Objective | Exceed Days | Maximum | | SAAQS Objective | Exceed Hours |
| | | | | Conc. | Time | | | Conc. | Time | | |
| NO | ppb | 1.7 | 97.7% | 6.6 | Dec-13 | - | - | 29.8 | Dec-28 13:00 | - | - |
| NO ₂ | ppb | 6.6 | 97.7% | 15.7 | Dec-2 | - | - | 31.3 | Dec-02 05:00 | 212 | 0 |
| NO _x | ppb | 8.3 | 97.7% | 18.3 | Dec-2 | - | - | 48.5 | Dec-04 14:00 | - | - |
| SO ₂ | ppb | 0.3 | 97.4% | 0.9 | Dec-30 | 57 | 0 | 3.8 | Dec-30 16:00 | 172 | 0 |
| H ₂ S | ppb | 0.2 | 97.4% | 0.6 | Dec-12 | 3.6 | 0 | 1.6 | Dec-12 19:00 | 10.8 | 0 |
| PM _{2.5} | ug/m3 | 5 | 97.8% | 14 | Dec-7 | 30 | 0 | 66 | Dec-02 00:00 | - | - |

SAAQS: Saskatchewan Ambient Air Quality Standards



WYAMZ Maidstone Station - December 2014 Summary Report



| Parameters | Unit | Color Code for Wind Spd & Pollutant Conc. Class | | | | | | |
|-------------------|-------------------|---|---------------------|---------------------|----------------------|-----------------------|----------------|--|
| Wind Speed | m/s | $0.3 \leq WS < 1.4$ | $1.4 \leq WS < 3.1$ | $3.1 \leq WS < 7.8$ | $7.8 \leq WS < 10.8$ | $10.8 \leq WS < 13.6$ | $WS \geq 13.6$ | |
| SO ₂ | ppb | $0 \leq C < 1$ | $1 \leq C < 5$ | $5 \leq C < 10$ | $10 \leq C < 57$ | $57 \leq C < 172$ | $C \geq 172$ | |
| NO ₂ | ppb | $0 \leq C < 5$ | $5 \leq C < 15$ | $15 \leq C < 30$ | $30 \leq C < 100$ | $100 \leq C < 212$ | $C \geq 212$ | |
| H ₂ S | ppb | $0 \leq C < 1$ | $1 \leq C < 3.6$ | $3.6 \leq C < 5$ | $5 \leq C < 8$ | $8 \leq C < 10.8$ | $C \geq 10.8$ | |
| PM _{2.5} | ug/m ³ | $0 \leq C < 2$ | $2 \leq C < 4$ | $4 \leq C < 10$ | $10 \leq C < 20$ | $20 \leq C < 30$ | $C \geq 30$ | |

Monthly Update

*All data has been slope, intercept, and baseline corrected. Data may change after validation process.

*All compliance parameters were within the Saskatchewan Ambient Air Quality Standards.

*All compliance parameters are above 90% operational.

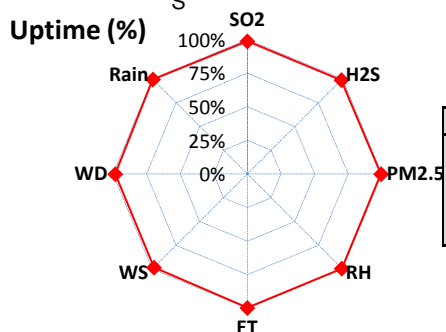
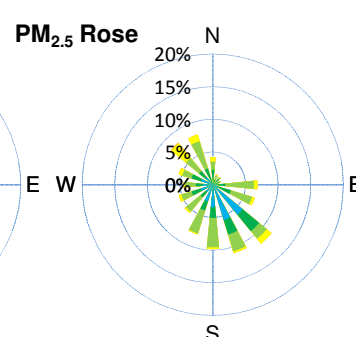
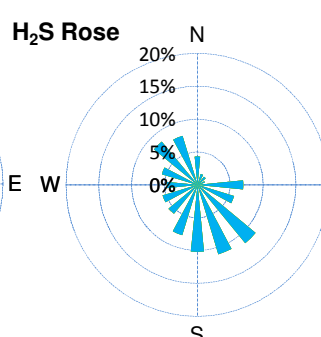
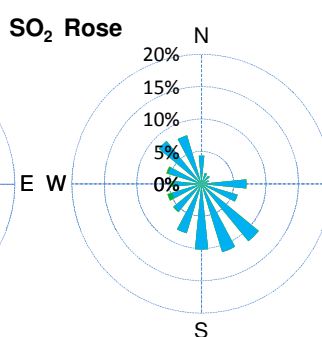
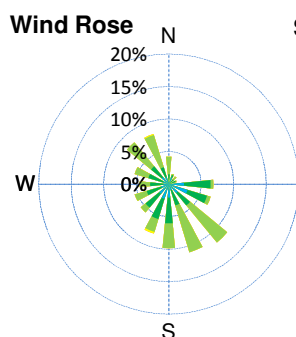
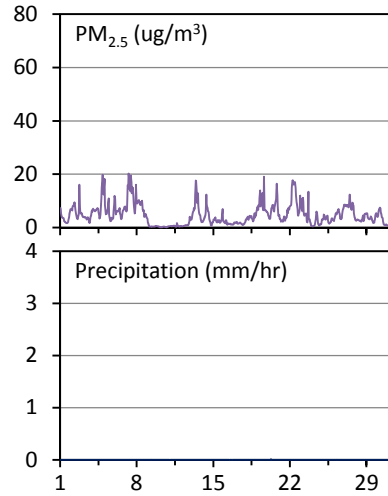
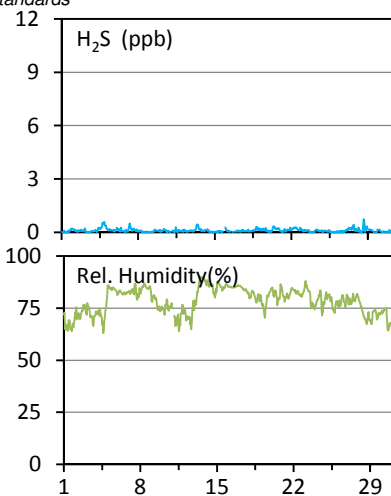
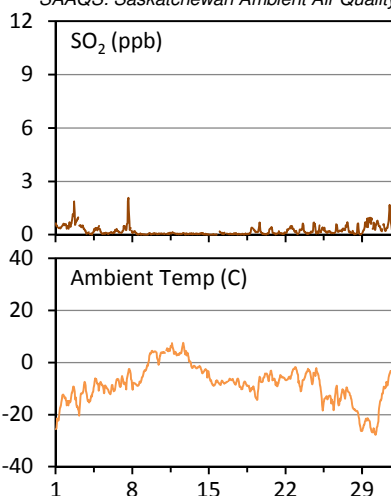
*There is 18 hours of SO₂/H₂S data, and 16 hours for all other parameters, flagged as "power failure" on Dec 21. SO₂ and H₂S are slower to recover following power disruptions.

*Routine quarterly calibration took place on Dec 17.

WYAMZ Kindersley Station - December 2014 Summary Report

| Pollutants | | Month Records | | 24-Hour Records | | | | 1-Hour Records | | | |
|-------------------|------------|---------------|--------|-----------------|-------|-----------------|-------------|----------------|--------------|-----------------|--------------|
| | | | | Maximum | | SAAQS Objective | Exceed Days | Maximum | | SAAQS Objective | Exceed Hours |
| Name | Conc. Unit | Avg. Conc. | Uptime | Conc. | Time | | | Conc. | Time | | |
| SO ₂ | ppb | 0.2 | 98.9% | 0.8 | Dec-2 | 57 | 0 | 2.1 | Dec-07 15:00 | 172 | 0 |
| H ₂ S | ppb | 0.1 | 98.9% | 0.3 | Dec-4 | 3.6 | 0 | 0.7 | Dec-28 14:00 | 10.8 | 0 |
| PM _{2.5} | ug/m3 | 5 | 99.5% | 12 | Dec-7 | 30 | 0 | 20 | Dec-07 06:00 | - | - |

SAAQS: Saskatchewan Ambient Air Quality Standards



| Parameters | Unit | Color Code for Wind Spd & Pollutant Conc. Class | | | | | |
|-------------------|-------------------|---|----------------|----------------|-----------------|------------------|-----------|
| Wind Speed | m/s | 0.3 ≤ WS < 1.4 | 1.4 ≤ WS < 3.1 | 3.1 ≤ WS < 7.8 | 7.8 ≤ WS < 10.8 | 10.8 ≤ WS < 13.6 | WS ≥ 13.6 |
| SO ₂ | ppb | 0 ≤ C < 1 | 1 ≤ C < 5 | 5 ≤ C < 10 | 10 ≤ C < 57 | 57 ≤ C < 172 | C ≥ 172 |
| H ₂ S | ppb | 0 ≤ C < 1 | 1 ≤ C < 3.6 | 3.6 ≤ C < 5 | 5 ≤ C < 8 | 8 ≤ C < 10.8 | C ≥ 10.8 |
| PM _{2.5} | ug/m ³ | 0 ≤ C < 2 | 2 ≤ C < 4 | 4 ≤ C < 10 | 10 ≤ C < 20 | 20 ≤ C < 30 | C ≥ 30 |

Monthly Update

*All data has been slope, intercept, and baseline corrected. Data may change after validation process.

*All compliance parameters were within the Saskatchewan Ambient Air Quality Standards.

*All compliance parameters are above 90% operational.

*Operational issues include 8 hours of H₂S and SO₂ data, and 4 hours for all other parameters, flagged as "power failure" on Dec 11 and 16, due to intermittent power disruptions. SO₂ and H₂S were slower to recover. 9 hours of WS/WD data is flagged as "analyzer failure" intermittently throughout the month, attributed to adverse weather conditions. The wind data shows that the instrument was likely frozen.

*Routine quarterly calibration took place on Dec 15.