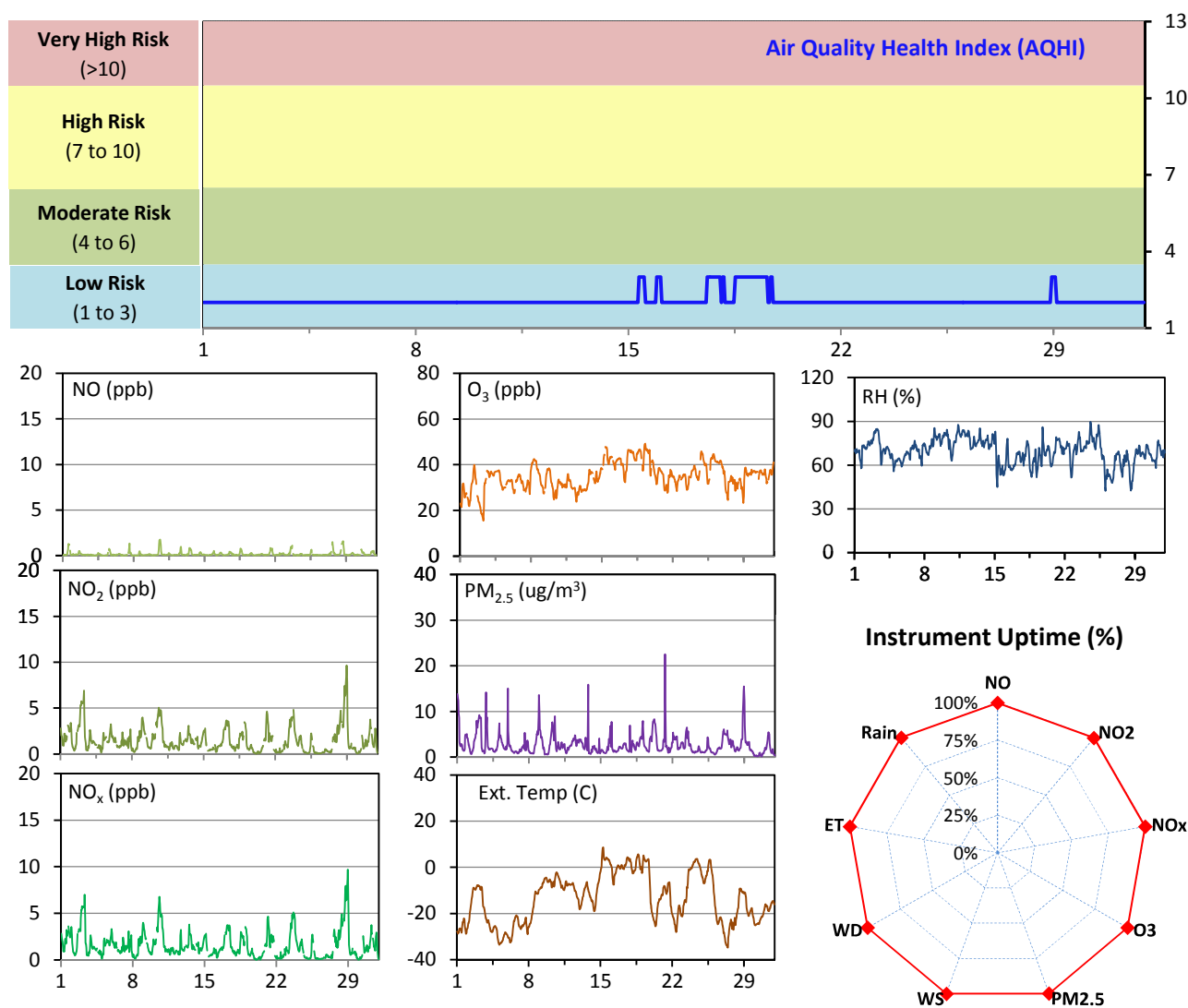


## WYAMZ Meadow Lake Station - January 2014 Summary Report

Pollutants		Month Records		24-Hour Records				1-Hour Records			
Name	Conc. Unit	Avg. Conc.	Uptime	Maximum		SAAQS Objective	Exceed Days	Maximum		SAAQS Objective	Exceed Hours
				Conc.	Time			Conc.	Time		
NO	ppb	0.2	99.7%	0.4	Jan-10	-	-	1.8	Jan-10 15:00	-	-
NO <sub>2</sub>	ppb	1.5	99.7%	4.4	Jan-28	106	0	9.6	Jan-28 23:00	159	0
NO <sub>x</sub>	ppb	1.6	99.7%	4.8	Jan-28	-	-	9.7	Jan-28 23:00	-	-
O <sub>3</sub>	ppb	35	99.9%	44	Jan-18	-	-	49	Jan-19 06:00	82	0
PM <sub>2.5</sub>	ug/m3	3	99.9%	5	Jan-3	30	0	23	Jan-21 06:00	-	-

SAAQS: Saskatchewan Ambient Air Quality Standards



### Monthly Update

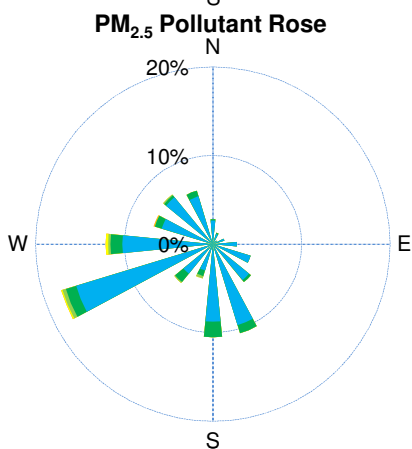
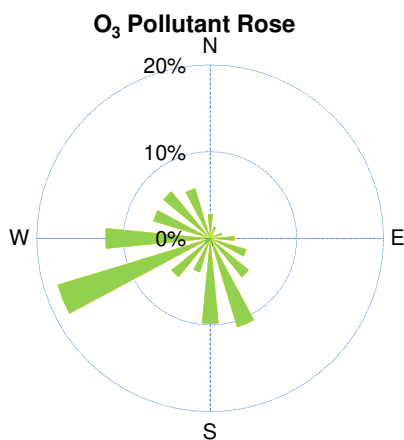
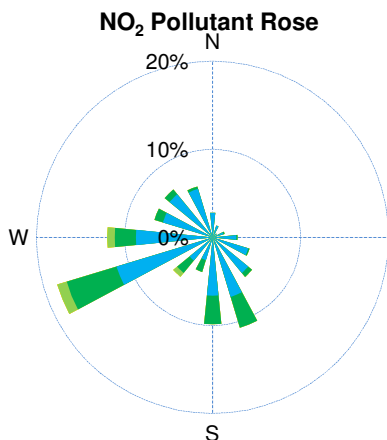
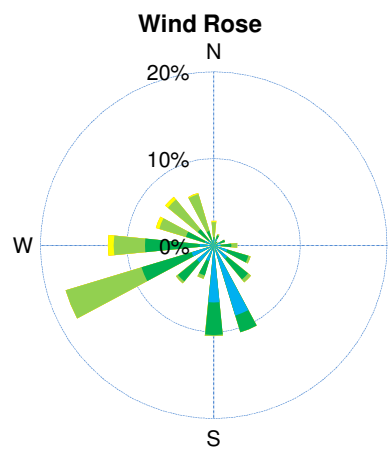
\*Airpointer data is preliminary and is subject to QA/QC changes.

\*All compliance parameters were within the Saskatchewan Ambient Air Quality Standards for the month of January.

\*All compliance parameters were greater than 90% operational for the month of January.

\*Operational issues for the month of January include: 1 hour of H<sub>2</sub>S and SO<sub>2</sub> data, and 2 hours of NO/NO<sub>2</sub>/NO<sub>x</sub> data flagged as "power failure" on Jan 15 due to a power disruption. Meteorological parameters were also affected, however the sensors were quick to recover.

# WYAMZ Meadow Lake Station - January 2014 Summary Report

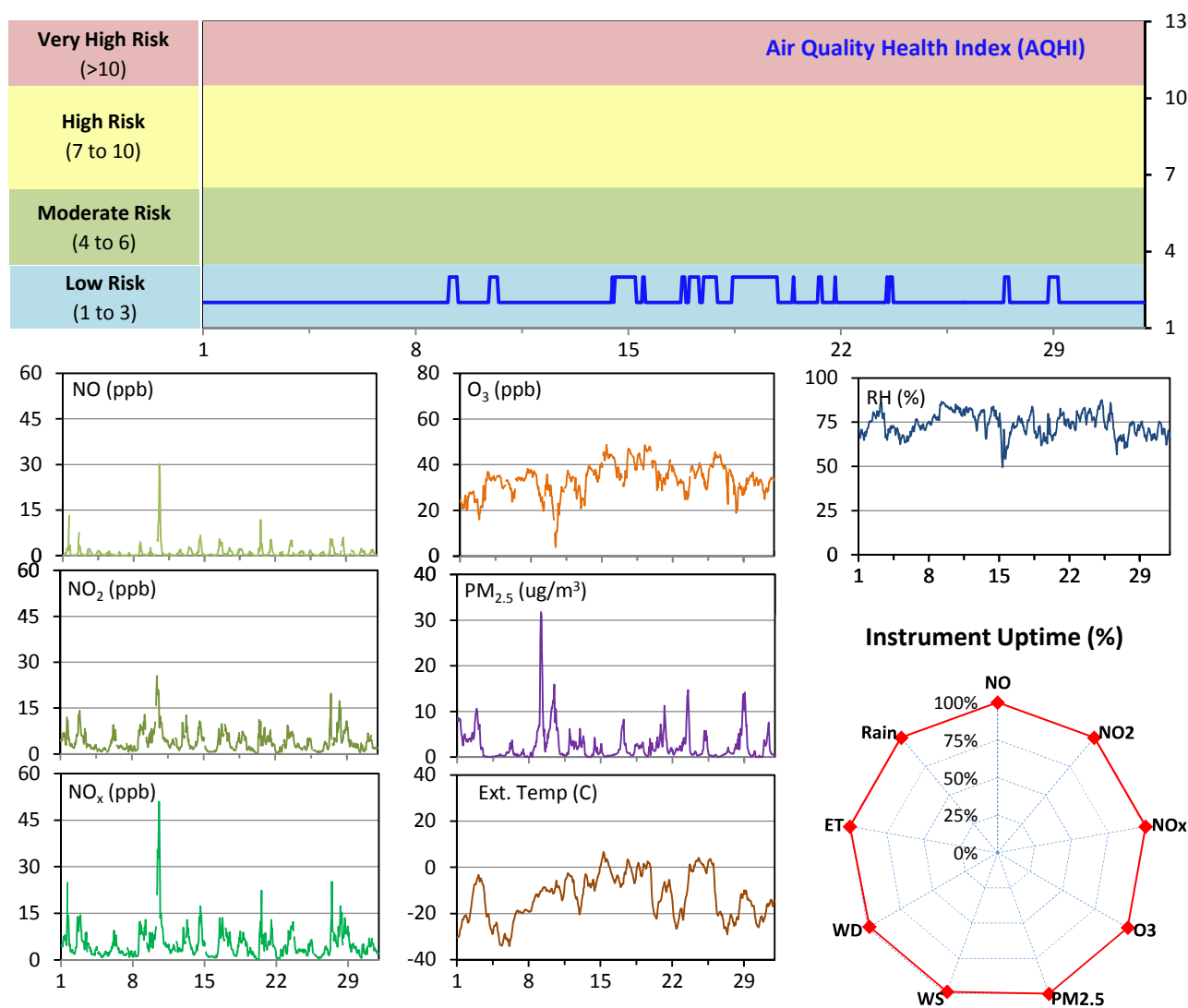


Parameters	Unit	Color Code for Wind Spd & Pollutant Conc. Class					
Wind Speed	m/s	0.3 ≤ WS < 1.4	1.4 ≤ WS < 3.1	3.1 ≤ WS < 7.8	7.8 ≤ WS < 10.8	10.8 ≤ WS < 13.6	WS ≥ 13.6
NO <sub>2</sub>	ppb	1 ≤ C < 2	2 ≤ C < 5	5 ≤ C < 10	10 ≤ C < 106	106 ≤ C < 212	C ≥ 212
O <sub>3</sub>	ppb	5 ≤ C < 10	10 ≤ C < 25	25 ≤ C < 50	50 ≤ C < 75	75 ≤ C < 82	C ≥ 82
PM <sub>2.5</sub>	ug/m <sup>3</sup>	1 ≤ C < 5	5 ≤ C < 10	10 ≤ C < 15	15 ≤ C < 20	20 ≤ C < 30	C ≥ 30

## WYAMZ Unity Station - January 2014 Summary Report

Pollutants		Month Records		24-Hour Records				1-Hour Records			
Name	Conc. Unit	Avg. Conc.	Uptime	Maximum		SAAQS Objective	Exceed Days	Maximum		SAAQS Objective	Exceed Hours
				Conc.	Time			Conc.	Time		
NO	ppb	1.0	100.0%	6.0	Jan-10	-	-	30.2	Jan-10 13:00	-	-
NO <sub>2</sub>	ppb	4.1	100.0%	12.6	Jan-10	106	0	25.6	Jan-10 10:00	159	0
NO <sub>x</sub>	ppb	5.1	100.0%	18.6	Jan-10	-	-	50.9	Jan-10 13:00	-	-
O <sub>3</sub>	ppb	33	100.0%	45	Jan-19	-	-	49	Jan-15 11:00	82	0
PM <sub>2.5</sub>	ug/m3	3	100.0%	10	Jan-9	30	0	32	Jan-09 04:00	-	-

SAAQS: Saskatchewan Ambient Air Quality Standards



### Monthly Update

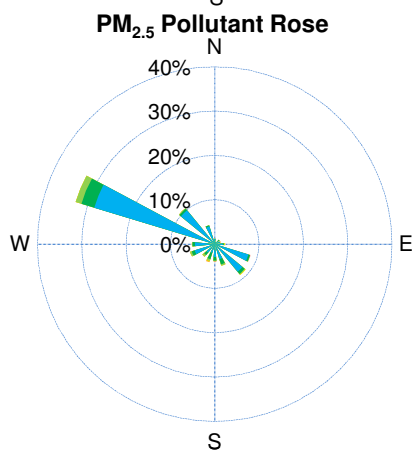
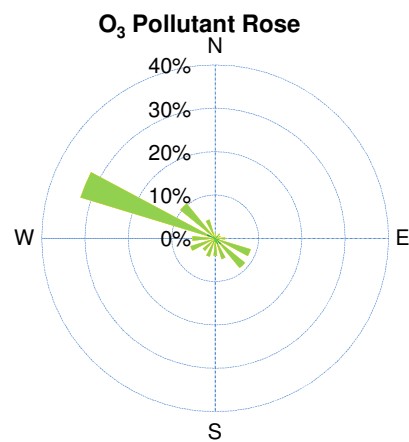
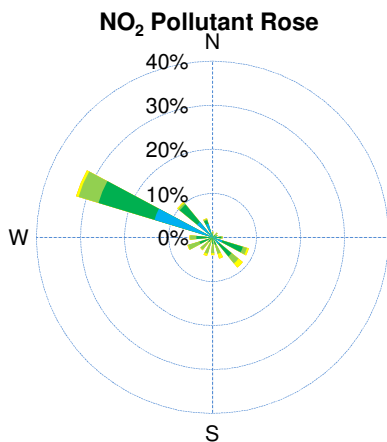
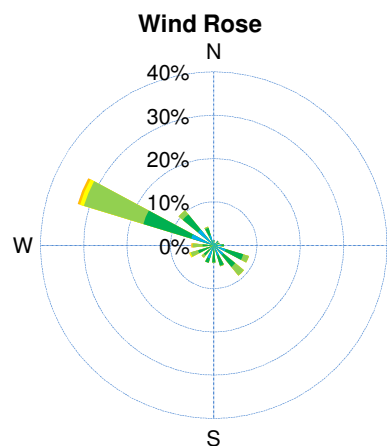
\*Airpointer data is preliminary and is subject to QA/QC changes.

\*All compliance parameters were within the Saskatchewan Ambient Air Quality Standards for the month of January.

\*All compliance parameters are above 90% operational for the month of January.

\*Operational issues for the month of January include: the WS/WD sensor malfunctioning, 10 hours of data is flagged as "analyzer failure" on Jan 5. Extreme cold weather likely caused the sensor to malfunction.

# WYAMZ Unity Station - January 2014 Summary Report

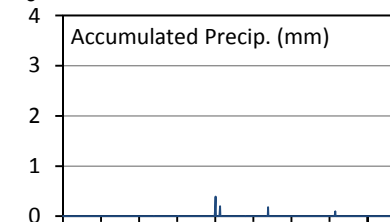
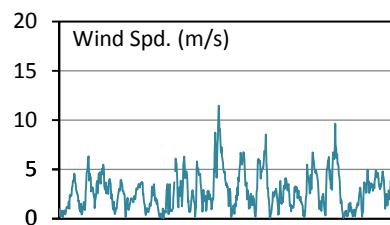
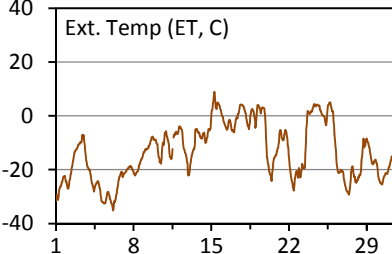
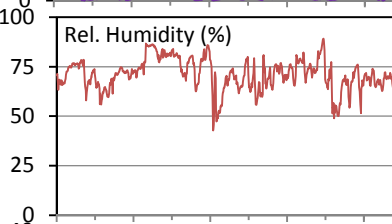
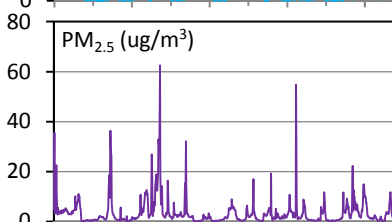
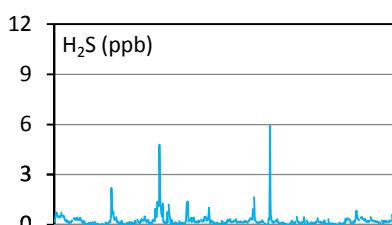
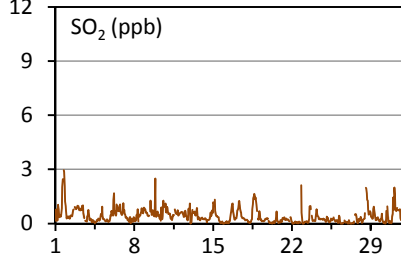
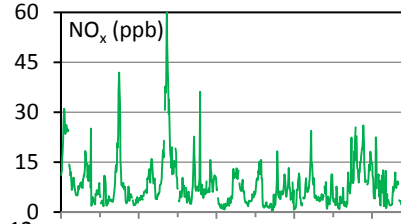
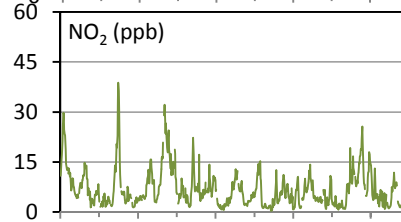
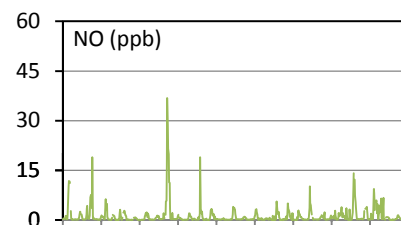
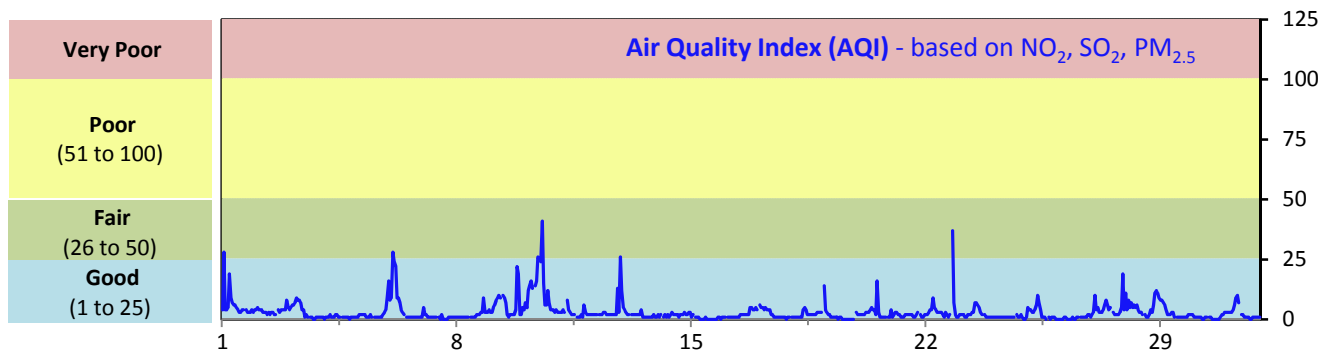


Parameters	Unit	Color Code for Wind Spd & Pollutant Conc. Class					
Wind Speed	m/s	0.3 ≤ WS < 1.4	1.4 ≤ WS < 3.1	3.1 ≤ WS < 7.8	7.8 ≤ WS < 10.8	10.8 ≤ WS < 13.6	WS ≥ 13.6
NO <sub>2</sub>	ppb	1 ≤ C < 2	2 ≤ C < 5	5 ≤ C < 10	10 ≤ C < 106	106 ≤ C < 212	C ≥ 212
O <sub>3</sub>	ppb	5 ≤ C < 10	10 ≤ C < 25	25 ≤ C < 50	50 ≤ C < 75	75 ≤ C < 82	C ≥ 82
PM <sub>2.5</sub>	ug/m <sup>3</sup>	1 ≤ C < 5	5 ≤ C < 10	10 ≤ C < 15	15 ≤ C < 20	20 ≤ C < 30	C ≥ 30

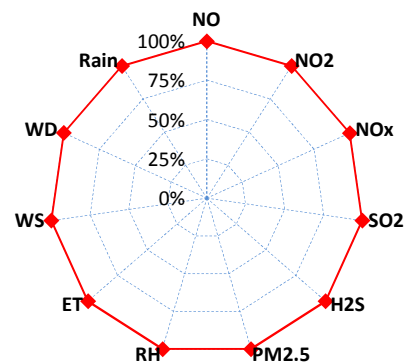
# WYAMZ Maidstone Station - January 2014 Summary Report

Pollutants		Month Records		24-Hour Records				1-Hour Records			
Name	Conc. Unit	Avg. Conc.	Uptime	Maximum		SAAQS Objective	Exceed Days	Maximum		SAAQS Objective	Exceed Hours
				Conc.	Time			Conc.	Time		
NO	ppb	1.2	99.9%	7.4	Jan-10	-	-	36.9	Jan-10 12:00	-	-
NO <sub>2</sub>	ppb	6.9	99.9%	19.6	Jan-10	106	0	38.8	Jan-06 05:00	159	0
NO <sub>x</sub>	ppb	8.1	99.9%	27.0	Jan-10	-	-	63.5	Jan-10 12:00	-	-
SO <sub>2</sub>	ppb	0.4	99.9%	1.0	Jan-1	48	0	3.0	Jan-01 17:00	172	0
H <sub>2</sub> S	ppb	0.2	99.9%	0.9	Jan-10	3.6	0	5.9	Jan-20 10:00	10.8	0
PM <sub>2.5</sub>	ug/m3	3	99.9%	15	Jan-10	30	0	62	Jan-10 13:00	-	-

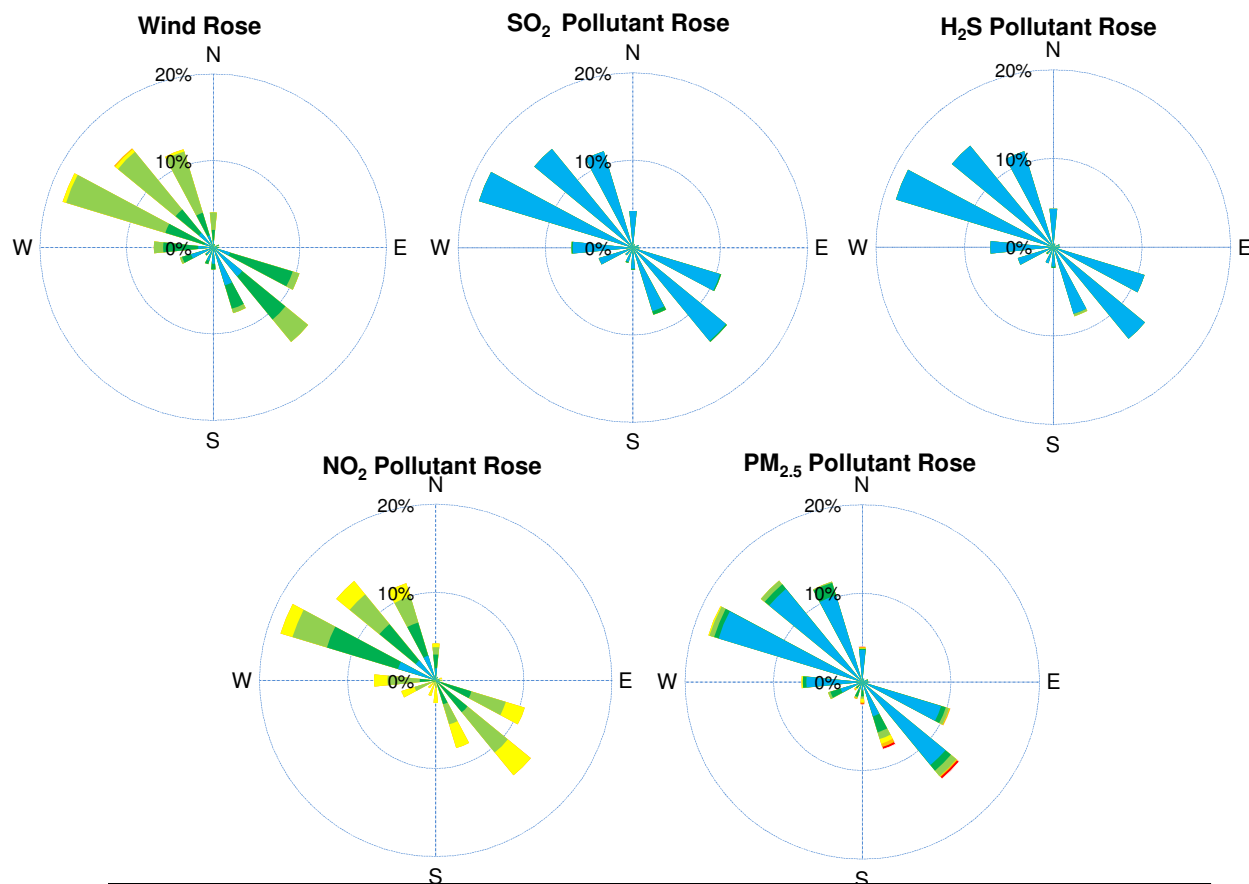
SAAQS: Saskatchewan Ambient Air Quality Standards



Instrument Uptime (%)



## WYAMZ Maidstone Station - January 2014 Summary Report



Parameters	Unit	Color Code for Wind Spd & Pollutant Conc. Class						
Wind Speed	m/s	$0.3 \leq WS < 1.4$	$1.4 \leq WS < 3.1$	$3.1 \leq WS < 7.8$	$7.8 \leq WS < 10.8$	$10.8 \leq WS < 13.6$	$WS \geq 13.6$	
SO <sub>2</sub>	ppb	$1 \leq C < 2$	$2 \leq C < 5$	$5 \leq C < 10$	$10 \leq C < 48$	$48 \leq C < 172$	$C \geq 172$	
NO <sub>2</sub>	ppb	$1 \leq C < 2$	$2 \leq C < 5$	$5 \leq C < 10$	$10 \leq C < 106$	$106 \leq C < 212$	$C \geq 212$	
H <sub>2</sub> S	ppb	$1 \leq C < 2$	$2 \leq C < 4$	$4 \leq C < 6$	$6 \leq C < 8$	$8 \leq C < 10.8$	$C \geq 10.8$	
PM <sub>2.5</sub>	ug/m <sup>3</sup>	$1 \leq C < 5$	$5 \leq C < 10$	$10 \leq C < 15$	$15 \leq C < 20$	$20 \leq C < 30$	$C \geq 30$	

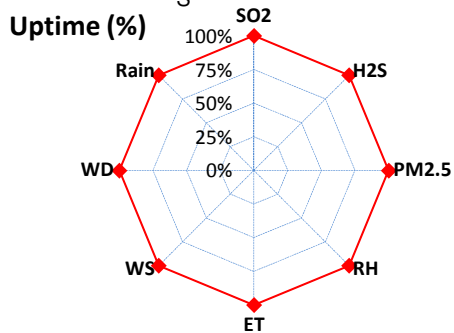
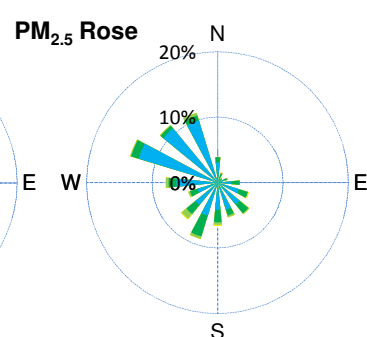
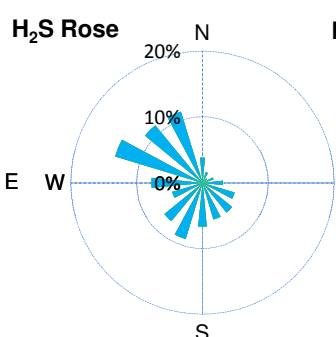
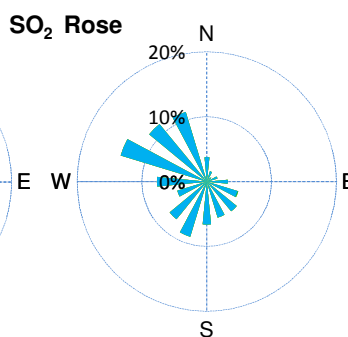
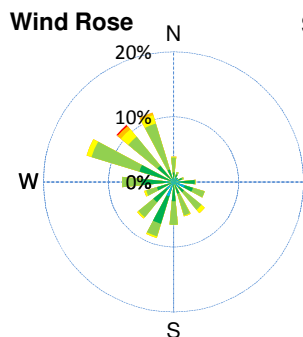
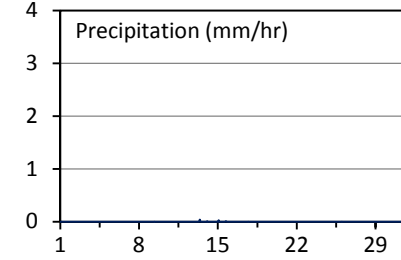
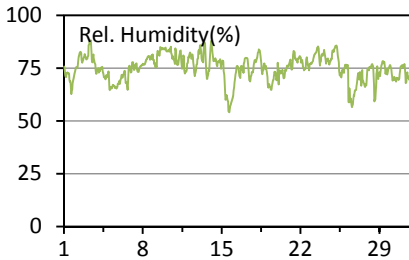
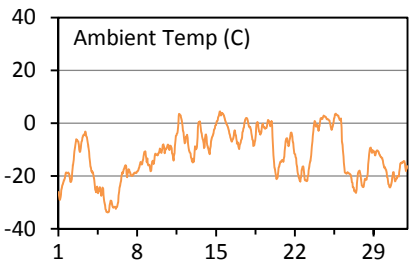
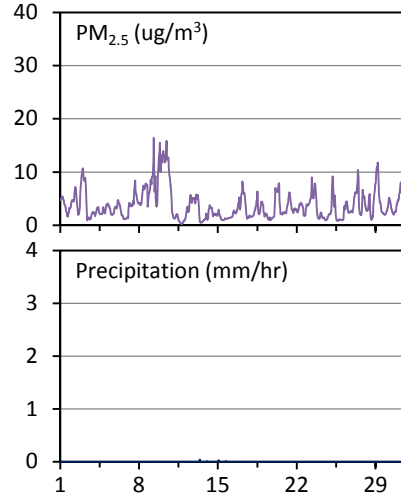
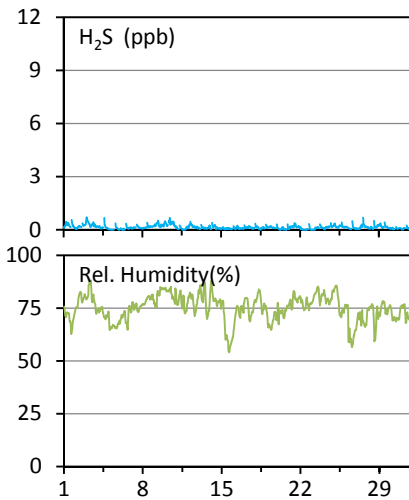
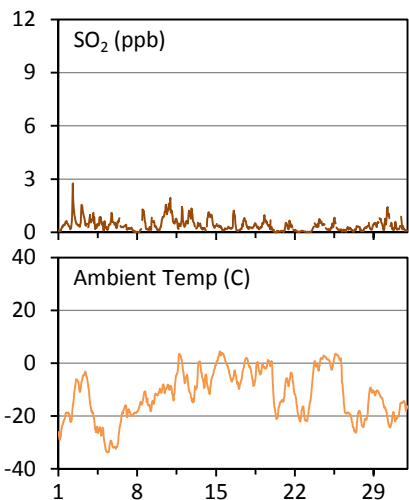
### Monthly Update

- \* Airpointer data is preliminary and subject to QA/QC changes.
- \* All compliance parameters were within the Saskatchewan Ambient Air Quality Standards for the month of January.
- \* All compliance parameters are above 90% operational for the month of January.
- \* Operational issues for the month of January include: 1 hour of data for all parameters flagged as "power failure" on Jan 11 due to a power disruption.

## WYAMZ Kindersley Station - January 2014 Summary Report

Pollutants		Month Records		24-Hour Records				1-Hour Records			
Name	Conc. Unit	Avg. Conc.	Uptime	Maximum		SAAQS Objective	Exceed Days	Maximum		SAAQS Objective	Exceed Hours
				Conc.	Time			Conc.	Time		
SO <sub>2</sub>	ppb	0.4	100.0%	1.1	Jan-10	48	0	2.8	Jan-02 06:00	172	0
H <sub>2</sub> S	ppb	0.2	100.0%	0.4	Jan-10	3.6	0	0.7	Jan-03 01:00	10.8	0
PM <sub>2.5</sub>	ug/m3	4	100.0%	11	Jan-10	30	0	16	Jan-09 07:00	-	-

SAAQS: Saskatchewan Ambient Air Quality Standards



Parameters	Unit	Color Code for Wind Spd & Pollutant Conc. Class					
Wind Speed	m/s	0.3 ≤ WS < 1.4	1.4 ≤ WS < 3.1	3.1 ≤ WS < 7.8	7.8 ≤ WS < 10.8	10.8 ≤ WS < 13.6	WS ≥ 13.6
SO <sub>2</sub>	ppb	1 ≤ C < 2	2 ≤ C < 5	5 ≤ C < 10	10 ≤ C < 48	48 ≤ C < 172	C ≥ 172
H <sub>2</sub> S	ppb	1 ≤ C < 2	2 ≤ C < 4	4 ≤ C < 6	6 ≤ C < 8	8 ≤ C < 10.8	C ≥ 10.8
PM <sub>2.5</sub>	ug/m <sup>3</sup>	1 ≤ C < 5	5 ≤ C < 10	10 ≤ C < 15	15 ≤ C < 20	20 ≤ C < 30	C ≥ 30

### Monthly Update

- \* Airpointer data is preliminary and subject to QA/QC changes.
- \* All compliance parameters were within the Saskatchewan Ambient Air Quality Standards for the month of January.
- \* All compliance parameters are above 90% operational for the month of January.
- \* There are no operational issues for the month of January.