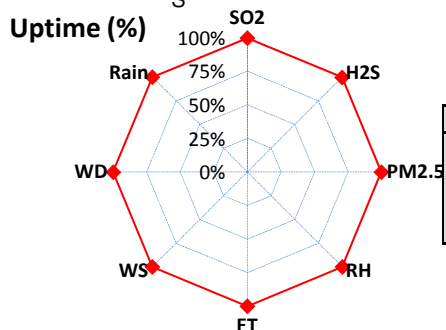
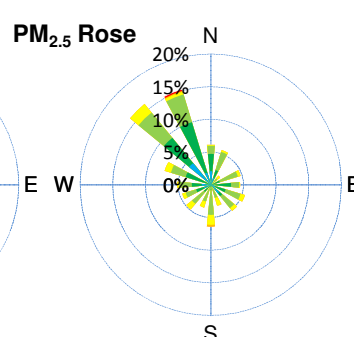
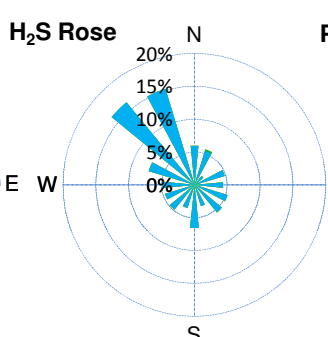
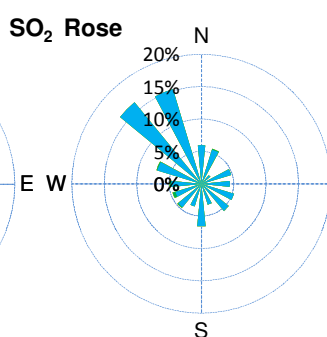
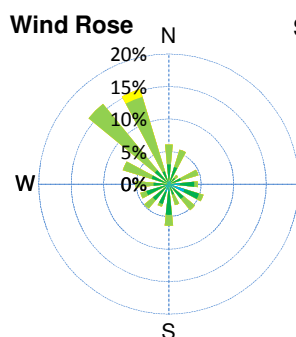
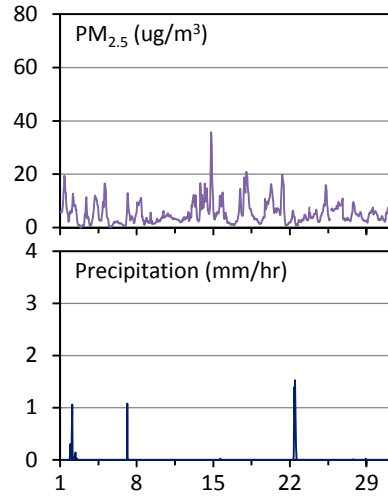
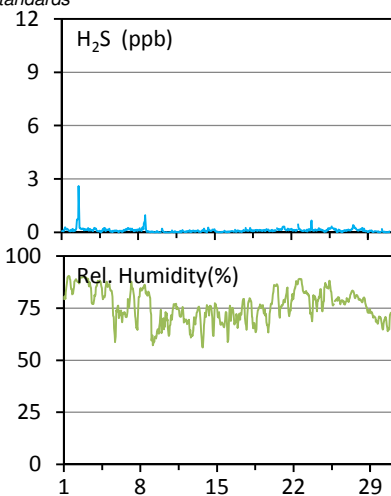
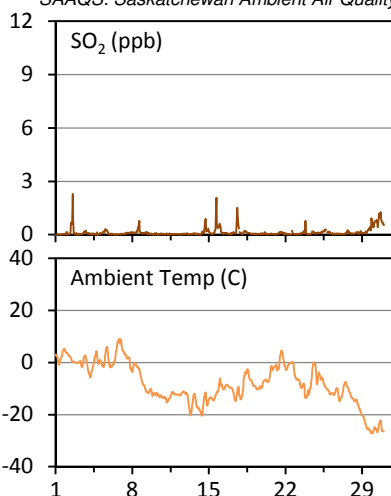


WYAMZ Kindersley Station - November 2014 Summary Report

Pollutants		Month Records		24-Hour Records				1-Hour Records			
				Maximum		SAAQS Objective	Exceed Days	Maximum		SAAQS Objective	Exceed Hours
Name	Conc. Unit	Avg. Conc.	Uptime	Conc.	Time			Conc.	Time		
SO ₂	ppb	0.1	99.7%	0.8	Nov-30	57	0	2.3	Nov-02 13:00	172	0
H ₂ S	ppb	0.1	99.7%	0.4	Nov-2	3.6	0	2.6	Nov-02 13:00	10.8	0
PM _{2.5}	ug/m3	5	99.7%	13	Nov-14	30	0	36	Nov-14 19:00	-	-

SAAQS: Saskatchewan Ambient Air Quality Standards



Parameters	Unit	Color Code for Wind Spd & Pollutant Conc. Class					
Wind Speed	m/s	0.3 ≤ WS < 1.4	1.4 ≤ WS < 3.1	3.1 ≤ WS < 7.8	7.8 ≤ WS < 10.8	10.8 ≤ WS < 13.6	WS ≥ 13.6
SO ₂	ppb	0 ≤ C < 1	1 ≤ C < 5	5 ≤ C < 10	10 ≤ C < 57	57 ≤ C < 172	C ≥ 172
H ₂ S	ppb	0 ≤ C < 1	1 ≤ C < 3.6	3.6 ≤ C < 5	5 ≤ C < 8	8 ≤ C < 10.8	C ≥ 10.8
PM _{2.5}	ug/m ³	0 ≤ C < 2	2 ≤ C < 4	4 ≤ C < 10	10 ≤ C < 20	20 ≤ C < 30	C ≥ 30

Monthly Update

*All data has been slope, intercept, and baseline corrected. Data may change after validation process.

*All compliance parameters were within the Saskatchewan Ambient Air Quality Standards.

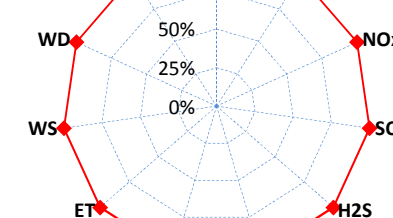
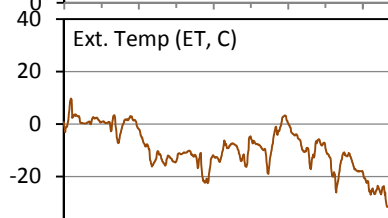
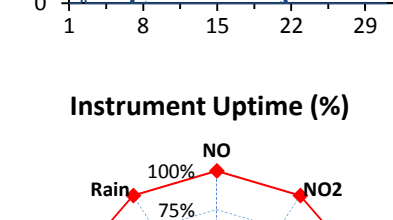
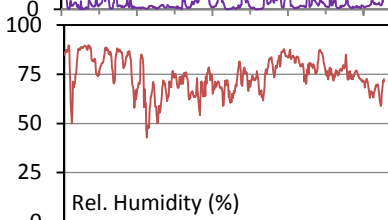
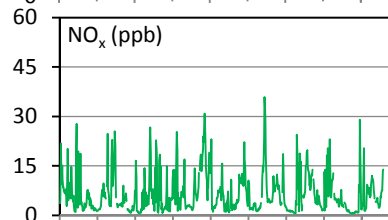
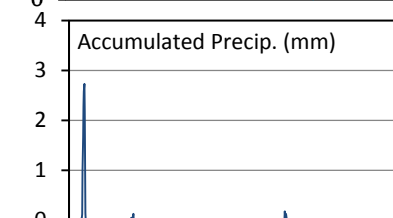
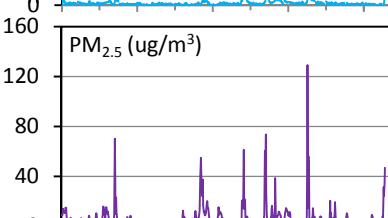
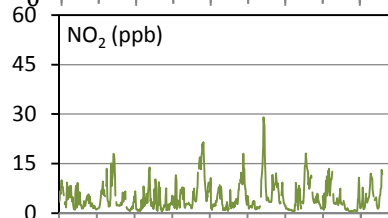
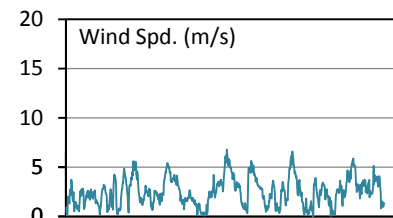
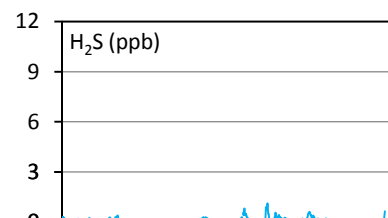
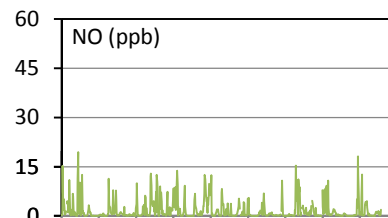
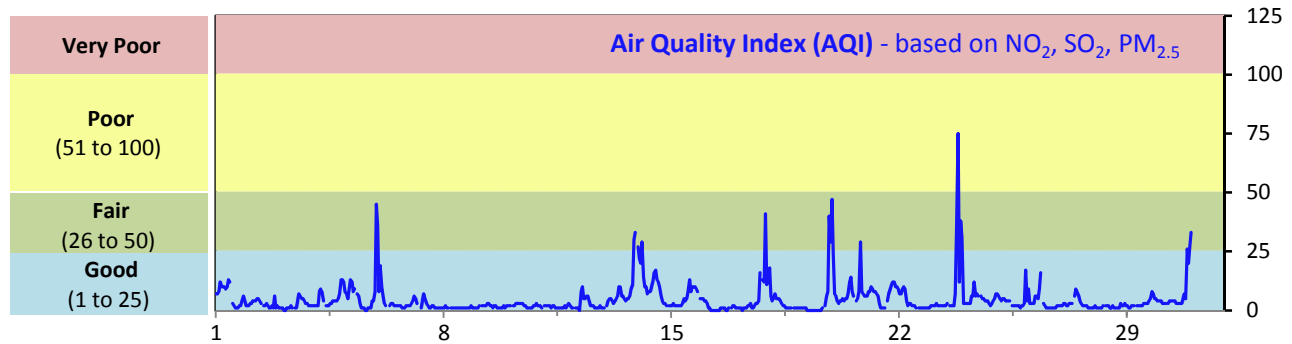
*All compliance parameters are above 90% operational.

*Operational issues include 2 hours of H₂S and SO₂ data, and 1 hour for all other parameters, flagged as "power failure" on Nov 25, due to a power disruption. SO₂ and H₂S were slower to recover. 1 hour of PM_{2.5} data is also flagged as "analyzer failure" on Nov 23, due to an abnormal data reading.

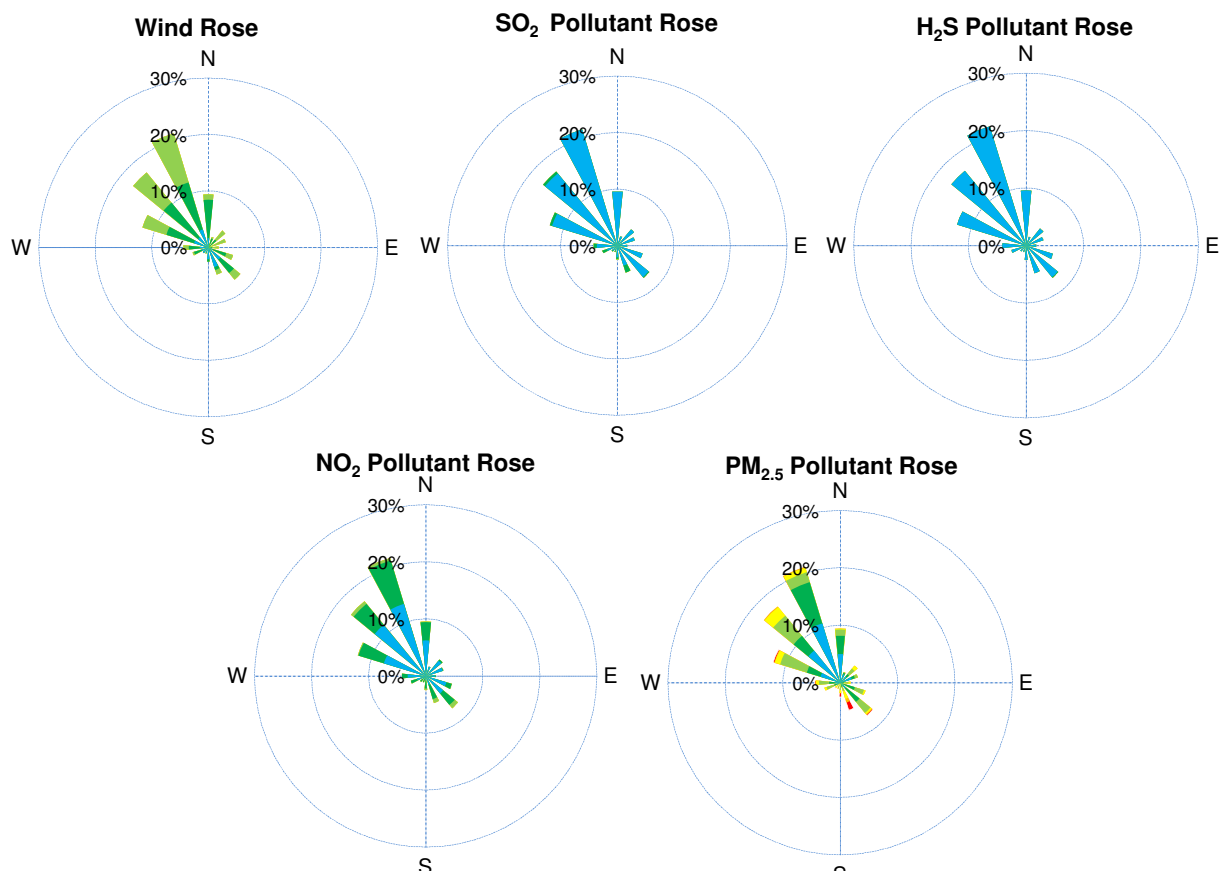
WYAMZ Maidstone Station - November 2014 Summary Report

Pollutants		Month Records		24-Hour Records				1-Hour Records			
Name	Conc. Unit	Avg. Conc.	Uptime	Maximum		SAAQS Objective	Exceed Days	Maximum		SAAQS Objective	Exceed Hours
				Conc.	Time			Conc.	Time		
NO	ppb	1.8	100.0%	4.7	Nov-14	-	-	19.5	Nov-02 13:00	-	-
NO ₂	ppb	4.9	100.0%	12.2	Nov-14	-	-	29.1	Nov-19 23:00	212	0
NO _x	ppb	6.7	100.0%	16.8	Nov-14	-	-	35.9	Nov-19 23:00	-	-
SO ₂	ppb	0.2	100.0%	0.6	Nov-17	57	0	7.5	Nov-19 22:00	172	0
H ₂ S	ppb	0.1	100.0%	0.4	Nov-20	3.6	0	1.1	Nov-20 01:00	10.8	0
PM _{2.5}	ug/m3	6	100.0%	14	Nov-23	30	0	129	Nov-23 19:00	-	-

SAAQS: Saskatchewan Ambient Air Quality Standards



WYAMZ Maidstone Station - November 2014 Summary Report



Parameters	Unit	Color Code for Wind Spd & Pollutant Conc. Class					
Wind Speed	m/s	$0.3 \leq WS < 1.4$	$1.4 \leq WS < 3.1$	$3.1 \leq WS < 7.8$	$7.8 \leq WS < 10.8$	$10.8 \leq WS < 13.6$	$WS \geq 13.6$
SO ₂	ppb	$0 \leq C < 1$	$1 \leq C < 5$	$5 \leq C < 10$	$10 \leq C < 57$	$57 \leq C < 172$	$C \geq 172$
NO ₂	ppb	$0 \leq C < 5$	$5 \leq C < 15$	$15 \leq C < 30$	$30 \leq C < 100$	$100 \leq C < 212$	$C \geq 212$
H ₂ S	ppb	$0 \leq C < 1$	$1 \leq C < 3.6$	$3.6 \leq C < 5$	$5 \leq C < 8$	$8 \leq C < 10.8$	$C \geq 10.8$
PM _{2.5}	ug/m ³	$0 \leq C < 2$	$2 \leq C < 4$	$4 \leq C < 10$	$10 \leq C < 20$	$20 \leq C < 30$	$C \geq 30$

Monthly Update

*All data has been slope, intercept, and baseline corrected. Data may change after validation process.

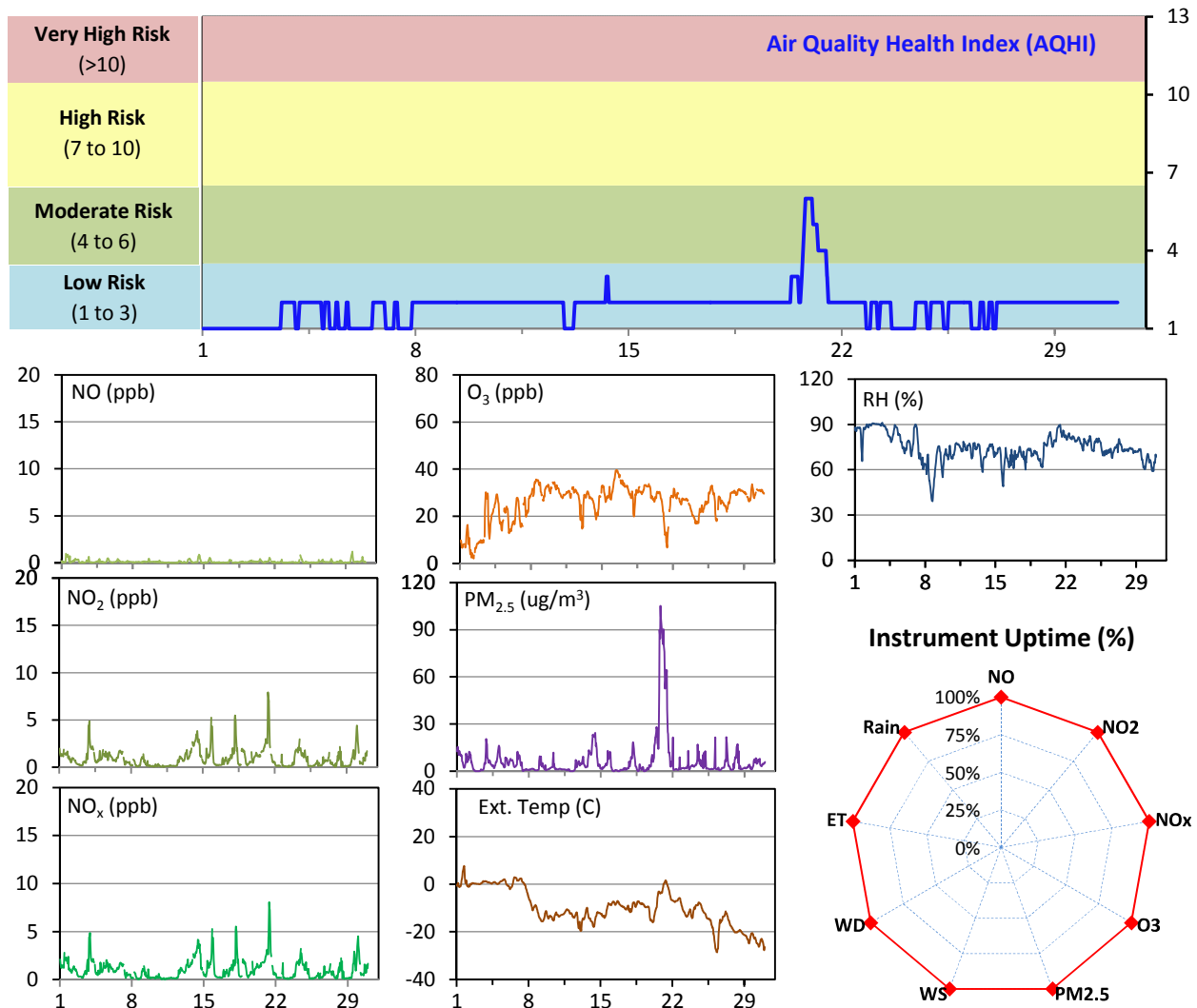
*All compliance parameters were within the Saskatchewan Ambient Air Quality Standards.

*All compliance parameters are above 90% operational. There are no operational issues to report.

WYAMZ Meadow Lake Station - November 2014 Summary Report

Pollutants		Month Records		24-Hour Records				1-Hour Records			
Name	Conc. Unit	Avg. Conc.	Uptime	Maximum		SAAQS Objective	Exceed Days	Maximum		SAAQS Objective	Exceed Hours
				Conc.	Time			Conc.	Time		
NO	ppb	0.1	100.0%	0.3	Nov-1	-	-	1.2	Nov-29 15:00	-	-
NO ₂	ppb	0.9	100.0%	2.6	Nov-21	-	-	7.9	Nov-21 08:00	212	0
NO _x	ppb	1.0	100.0%	2.7	Nov-21	-	-	8.1	Nov-21 08:00	-	-
O ₃	ppb	26	100.0%	36	Nov-16	-	-	40	Nov-16 12:00	82	0
PM _{2.5}	ug/m3	7	100.0%	40	Nov-20	30	2	105	Nov-20 19:00	-	-

SAAQS: Saskatchewan Ambient Air Quality Standards



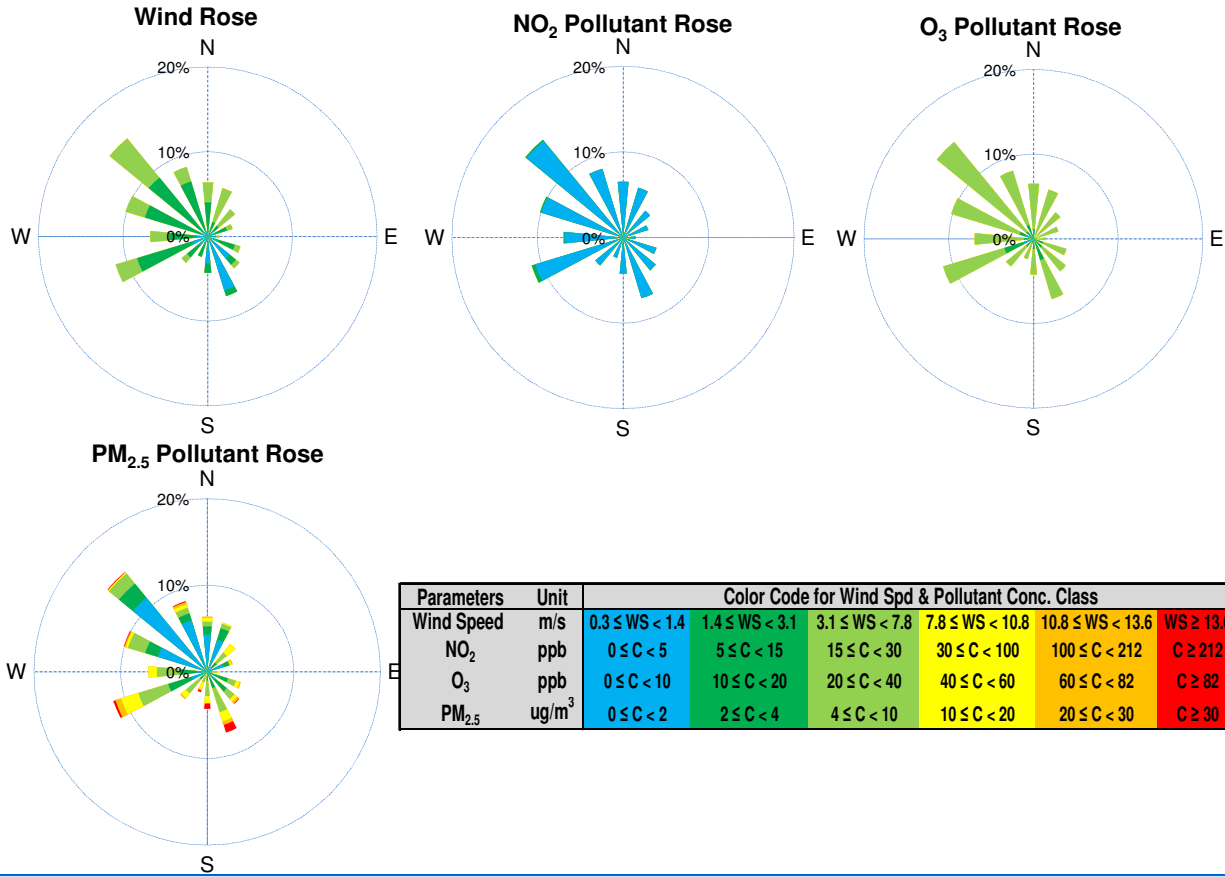
Monthly Update

*All data has been slope, intercept, and baseline corrected. Data may change after validation process.

*All compliance parameters were within the Saskatchewan Ambient Air Quality Standards, with the exception of two 24-hour PM_{2.5} exceedance events. Please refer to the exceedance summary table for details.

*All compliance parameters were greater than 90% operational. There are no operational issues to report.

WYAMZ Meadow Lake Station - November 2014 Summary Report



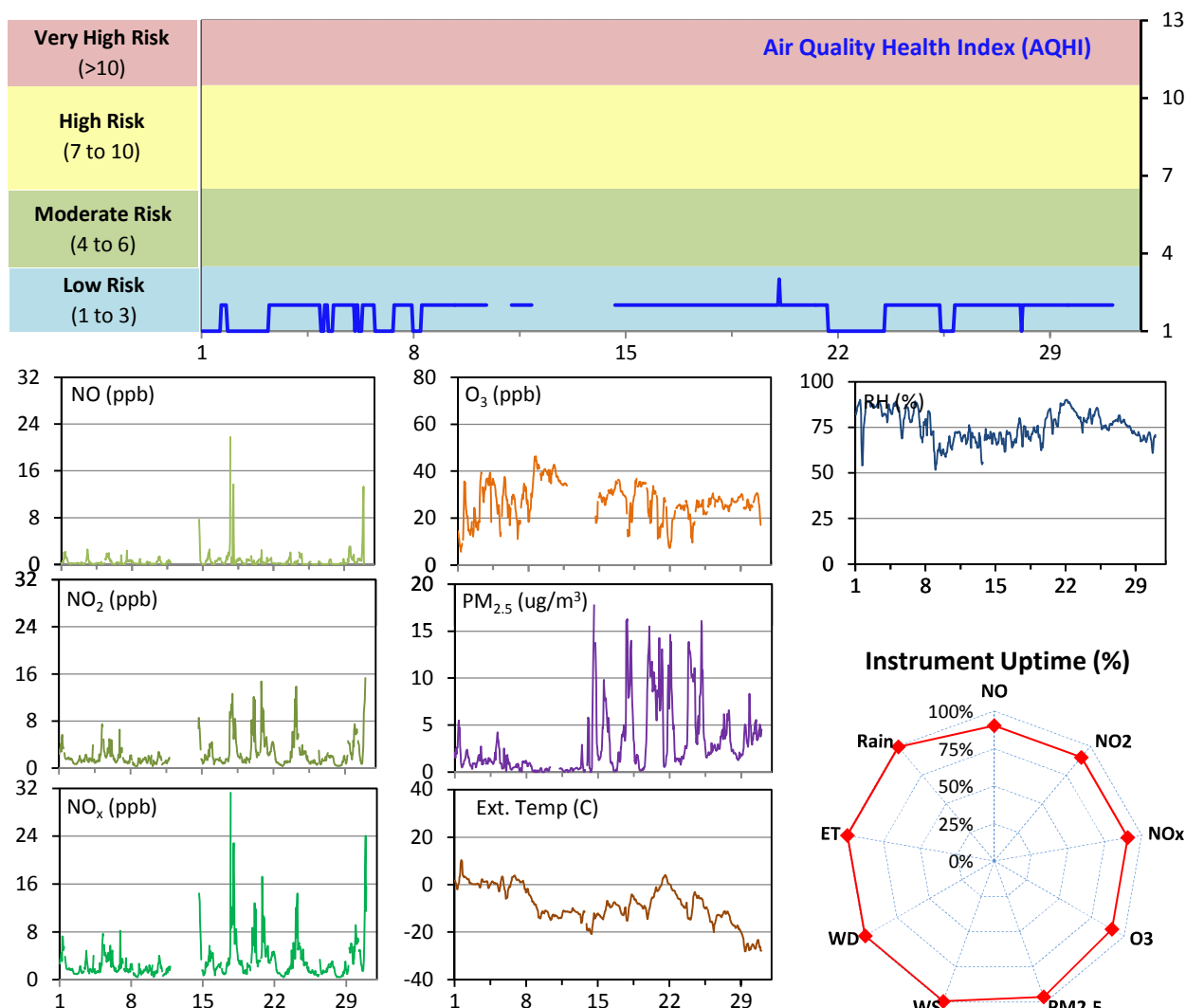
Parameters	Unit	Color Code for Wind Spd & Pollutant Conc. Class					
Wind Speed	m/s	0.3 ≤ WS < 1.4	1.4 ≤ WS < 3.1	3.1 ≤ WS < 7.8	7.8 ≤ WS < 10.8	10.8 ≤ WS < 13.6	WS ≥ 13.6
NO ₂	ppb	0 ≤ C < 5	5 ≤ C < 15	15 ≤ C < 30	30 ≤ C < 100	100 ≤ C < 212	C ≥ 212
O ₃	ppb	0 ≤ C < 10	10 ≤ C < 20	20 ≤ C < 40	40 ≤ C < 60	60 ≤ C < 82	C ≥ 82
PM _{2.5}	ug/m ³	0 ≤ C < 2	2 ≤ C < 4	4 ≤ C < 10	10 ≤ C < 20	20 ≤ C < 30	C ≥ 30

Exceedance Summary (24-Hour Average)											
Pollutant	Conc. ppb	Exceedance Date mmm-dd	WS m/s	WD deg	AQHI -	Rain mm	NO ppb	NO ₂ ppb	NO _x ppb	O ₃ ppb	PM _{2.5} ug/m ³
24-hour Exceedance Information											
PM _{2.5}	40	Nov-20	1.5	154	3	0.0	0	1	2	28	40
PM _{2.5}	39	Nov-21	2.2	201	3	0.0	0	3	3	19	39

WYAMZ Unity Station - November 2014 Summary Report

Pollutants		Month Records		24-Hour Records				1-Hour Records			
Name	Conc. Unit	Avg. Conc.	Uptime	Maximum		SAAQS Objective	Exceed Days	Maximum		SAAQS Objective	Exceed Hours
				Conc.	Time			Conc.	Time		
NO	ppb	0.6	90.4%	2.2	Nov-17	-	-	21.8	Nov-17 17:00	-	-
NO ₂	ppb	2.4	90.4%	5.6	Nov-20	-	-	15.3	Nov-30 23:00	212	0
NO _x	ppb	3.0	90.4%	6.8	Nov-30	-	-	31.3	Nov-17 17:00	-	-
O ₃	ppb	27	90.7%	40	Nov-9	-	-	46	Nov-08 17:00	82	0
PM _{2.5}	ug/m3	3	96.4%	10	Nov-20	30	0	18	Nov-14 14:00	-	-

SAAQS: Saskatchewan Ambient Air Quality Standards



Monthly Update

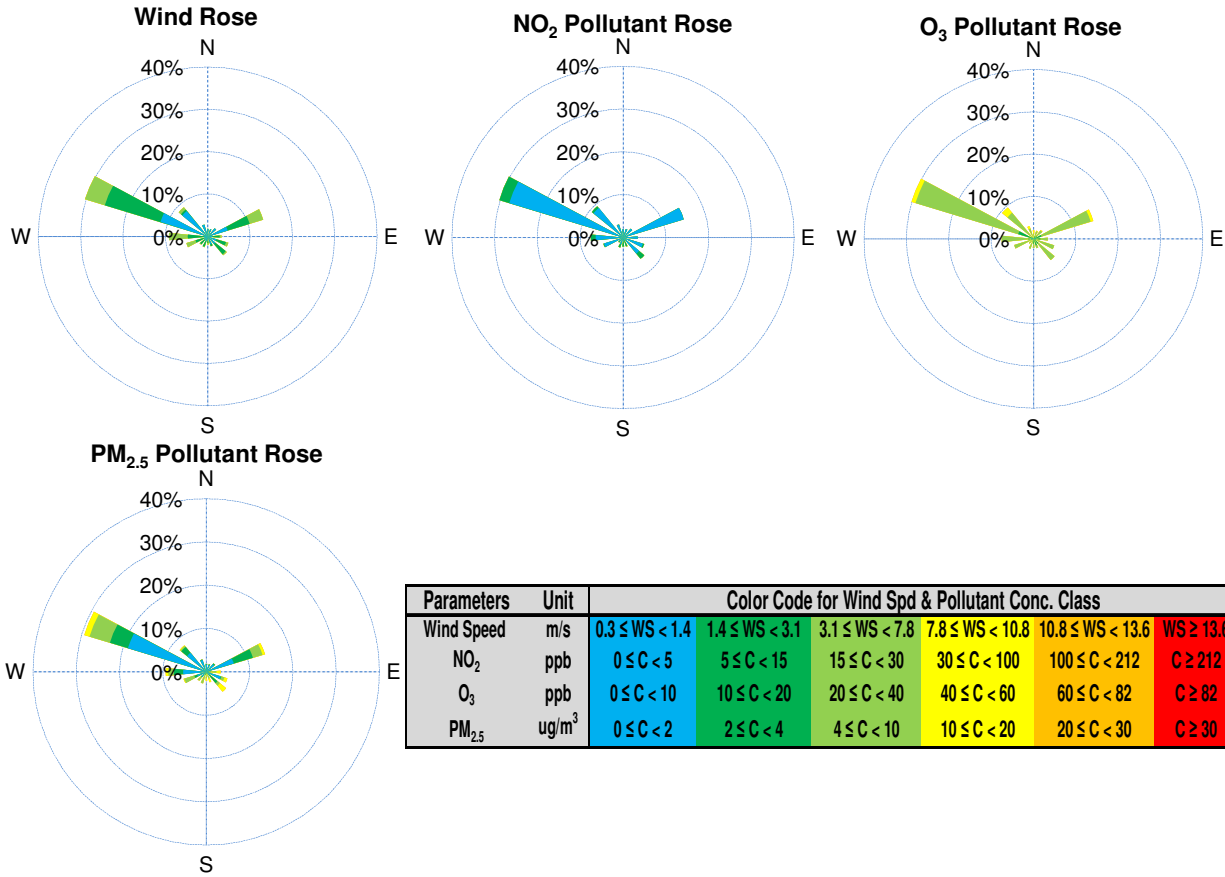
*All data has been slope, intercept, and baseline corrected. Data may change after validation process.

*All compliance parameters were within the Saskatchewan Ambient Air Quality Standards.

*All compliance parameters are above 90% operational.

*Operational issues include: 60 hours of data for all gaseous pollutants flagged as "analyzer failure" on Nov 11-14 due to a pump failure. The pump was replaced on Nov 13, 3-4 hours for all parameters is flagged as "maintenance". The airpointer was calibrated on Nov 14, and it returned to normal operations. 3 hours of NO/NO₂/NO_x data, 2 hours of PM_{2.5} data, and 1 hour for all other parameters is flagged as "power failure" throughout the month due to intermittent power disruptions. Analyzer recovery times vary. 20 hours of PM_{2.5} data is flagged as "analyzer failure" following the Nov 10 power disruption, as abnormal data was recorded.

WYAMZ Unity Station - November 2014 Summary Report



Parameters	Unit	Color Code for Wind Spd & Pollutant Conc. Class					
Wind Speed	m/s	0.3 ≤ WS < 1.4	1.4 ≤ WS < 3.1	3.1 ≤ WS < 7.8	7.8 ≤ WS < 10.8	10.8 ≤ WS < 13.6	WS ≥ 13.6
NO ₂	ppb	0 ≤ C < 5	5 ≤ C < 15	15 ≤ C < 30	30 ≤ C < 100	100 ≤ C < 212	C ≥ 212
O ₃	ppb	0 ≤ C < 10	10 ≤ C < 20	20 ≤ C < 40	40 ≤ C < 60	60 ≤ C < 82	C ≥ 82
PM _{2.5}	ug/m ³	0 ≤ C < 2	2 ≤ C < 4	4 ≤ C < 10	10 ≤ C < 20	20 ≤ C < 30	C ≥ 30