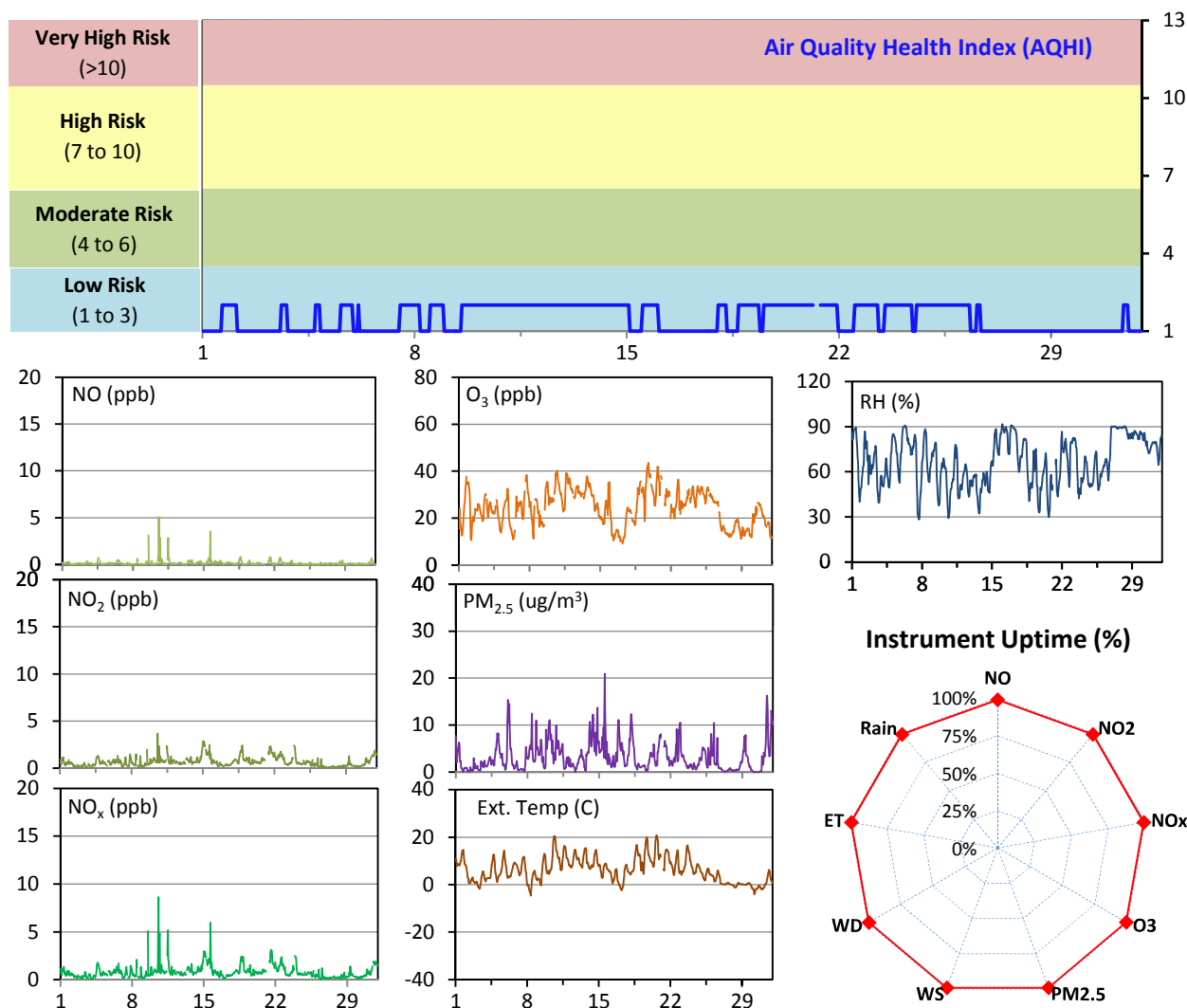


## WYAMZ Meadow Lake Station - October 2014 Summary Report

Pollutants		Month Records		24-Hour Records				1-Hour Records			
Name	Conc. Unit	Avg. Conc.	Uptime	Maximum		SAAQS Objective	Exceed Days	Maximum		SAAQS Objective	Exceed Hours
				Conc.	Time			Conc.	Time		
NO	ppb	0.2	99.0%	0.6	Oct-10	-	-	5.0	Oct-10 13:00	-	-
NO <sub>2</sub>	ppb	0.7	99.0%	1.6	Oct-15	-	-	3.7	Oct-10 13:00	212	0
NO <sub>x</sub>	ppb	0.8	99.0%	2.0	Oct-15	-	-	8.6	Oct-10 13:00	-	-
O <sub>3</sub>	ppb	25	99.0%	35	Oct-19	-	-	43	Oct-19 18:00	82	0
PM <sub>2.5</sub>	ug/m3	3	99.2%	8	Oct-14	30	0	21	Oct-15 13:00	-	-

SAAQS: Saskatchewan Ambient Air Quality Standards



### Monthly Update

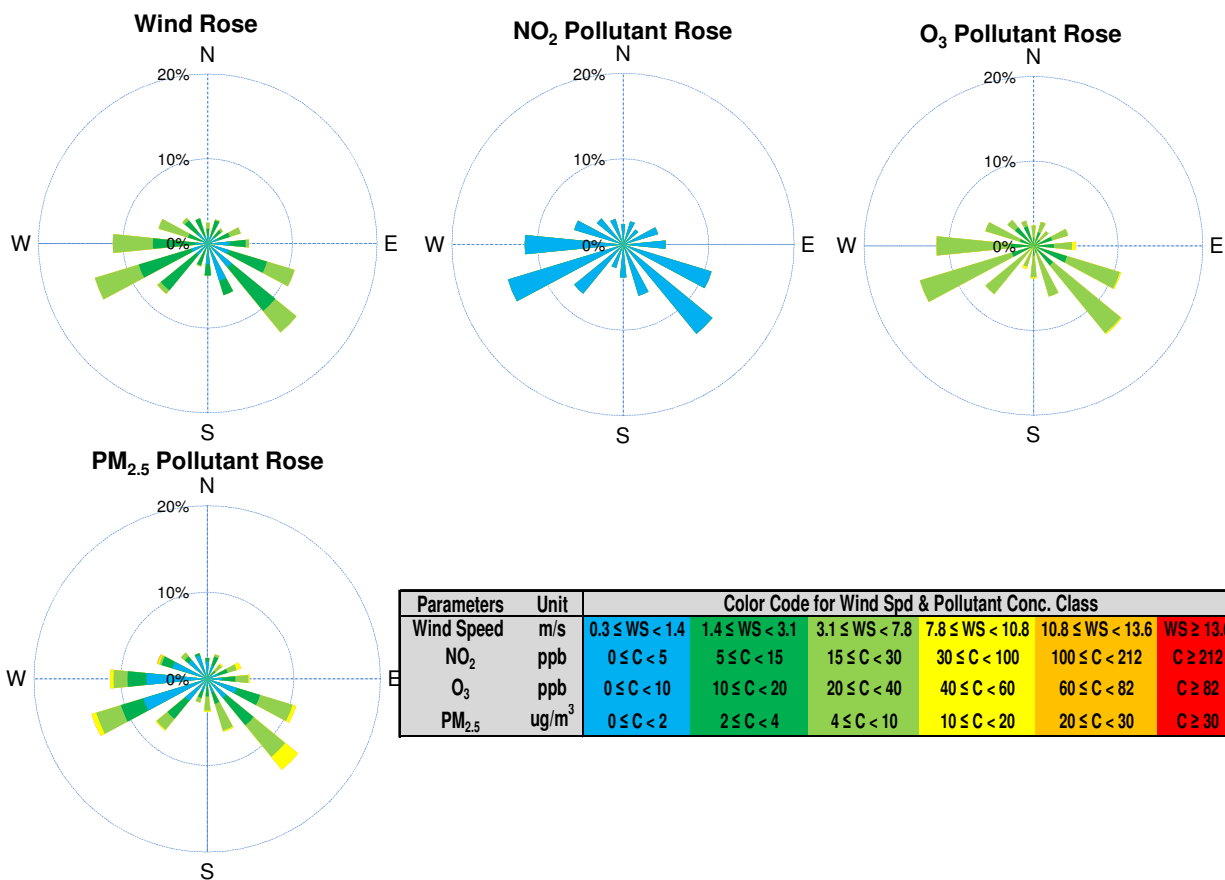
\*All data has been slope, intercept, and baseline corrected. Data may change after validation process.

\*All compliance parameters were within the Saskatchewan Ambient Air Quality Standards.

\*All compliance parameters were greater than 90% operational.

\*Operational issues include: 7 hours of NO/NO<sub>2</sub>/NO<sub>x</sub> and O<sub>3</sub> data, and 6 hours for all other parameters is flagged as "power failure" on Oct 21 02:00-08:00, due to a power disruption at the airpointer.

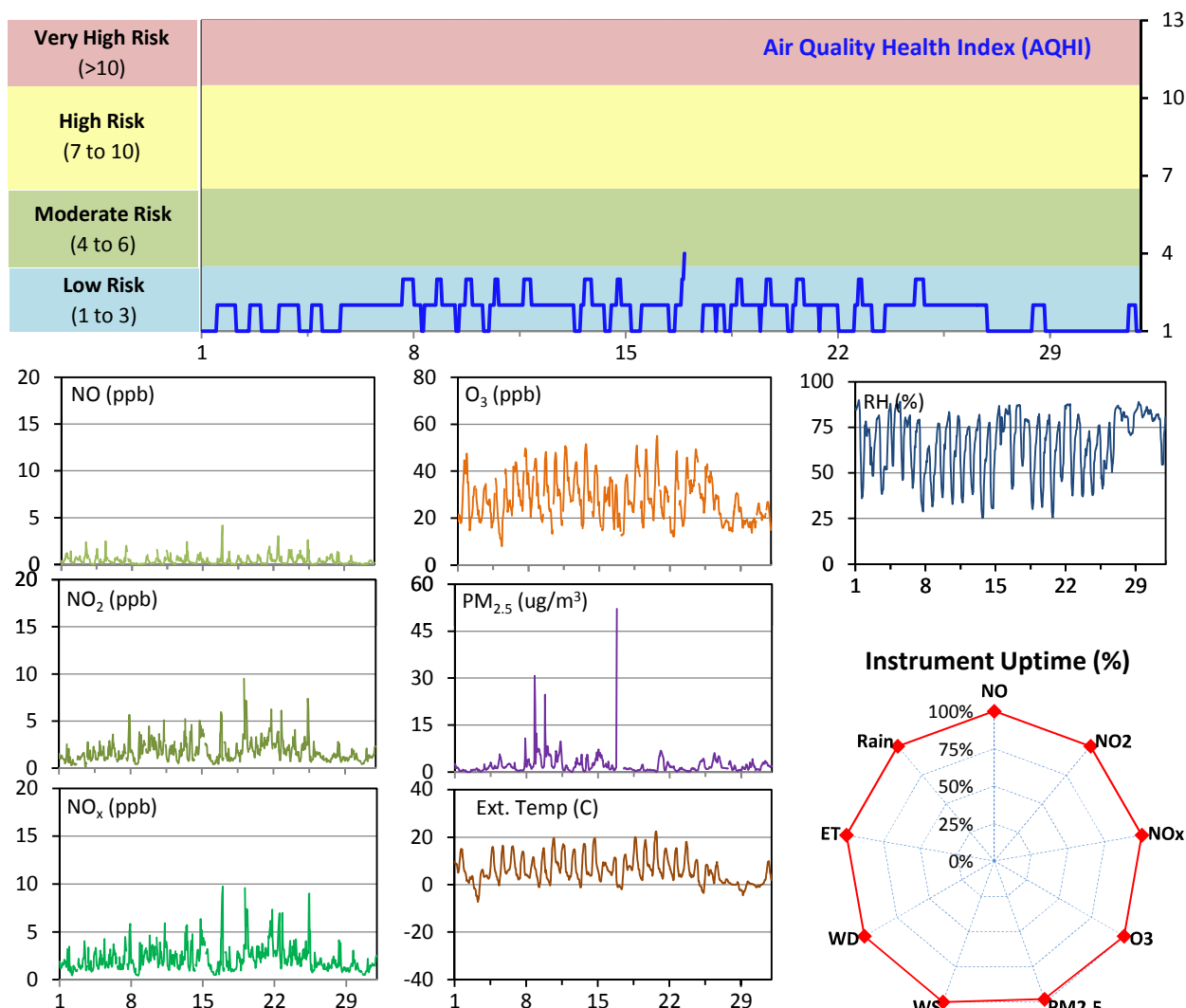
# WYAMZ Meadow Lake Station - October 2014 Summary Report



## WYAMZ Unity Station - October 2014 Summary Report

Pollutants		Month Records		24-Hour Records				1-Hour Records			
Name	Conc. Unit	Avg. Conc.	Uptime	Maximum		SAAQS Objective	Exceed Days	Maximum		SAAQS Objective	Exceed Hours
				Conc.	Time			Conc.	Time		
NO	ppb	0.4	100.0%	0.7	Oct-22	-	-	4.2	Oct-16 22:00	-	-
NO <sub>2</sub>	ppb	1.8	100.0%	3.7	Oct-19	-	-	9.5	Oct-19 02:00	212	0
NO <sub>x</sub>	ppb	2.2	100.0%	4.1	Oct-19	-	-	9.7	Oct-16 22:00	-	-
O <sub>3</sub>	ppb	28	100.0%	38	Oct-24	-	-	55	Oct-20 17:00	82	0
PM <sub>2.5</sub>	ug/m3	2	98.0%	6	Oct-9	30	0	52	Oct-16 20:00	-	-

SAAQS: Saskatchewan Ambient Air Quality Standards



### Monthly Update

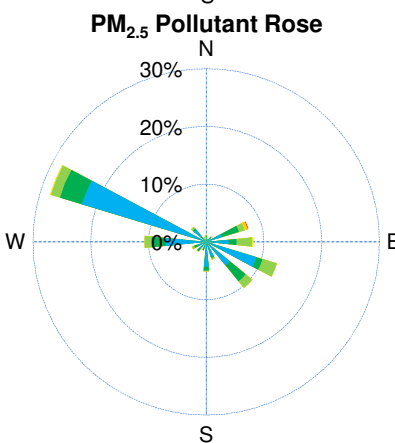
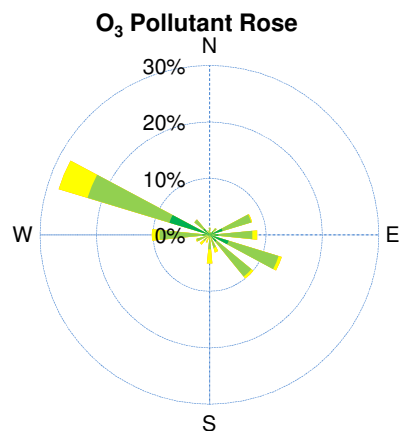
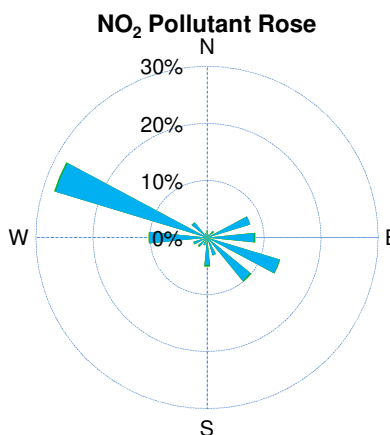
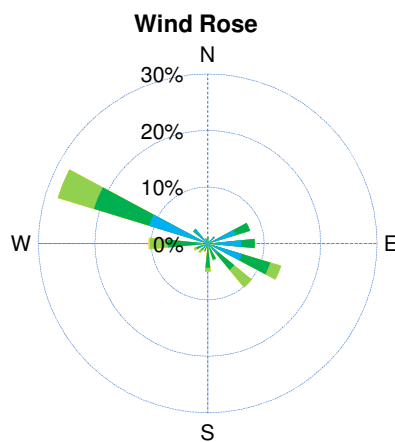
\*All data has been slope, intercept, and baseline corrected. Data may change after validation process.

\*All compliance parameters were within the Saskatchewan Ambient Air Quality Standards.

\*All compliance parameters are above 90% operational.

\*Operational issues include: 15 hours of PM<sub>2.5</sub> data flagged as "analyzer failure" Oct 16 21:00 to Oct 17 11:00. A large spike in concentration was recorded, and data slowly decreased to background levels. It was determined that the analyzer was contaminated during this time, and data was invalidated.

# WYAMZ Unity Station - October 2014 Summary Report

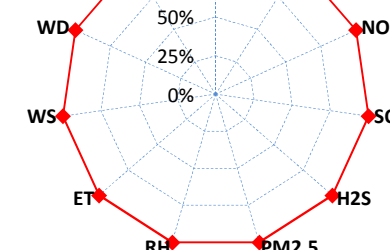
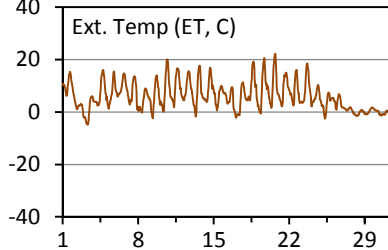
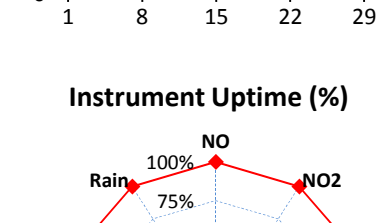
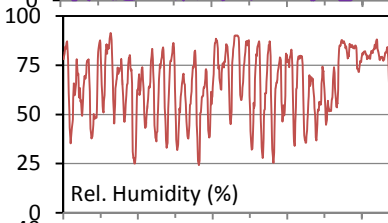
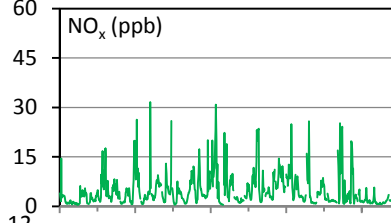
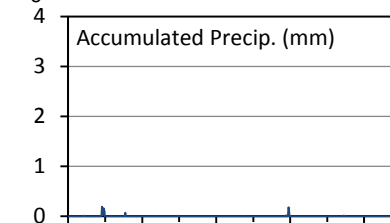
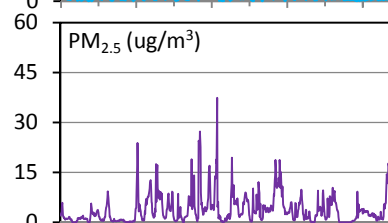
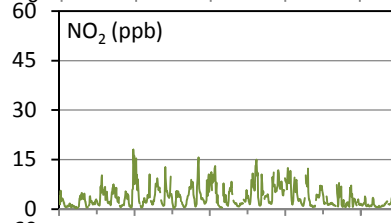
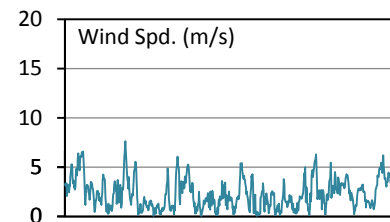
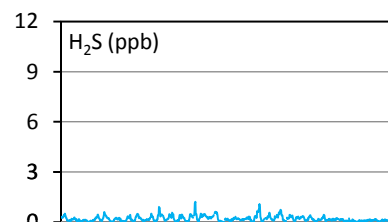
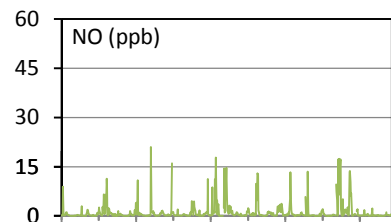
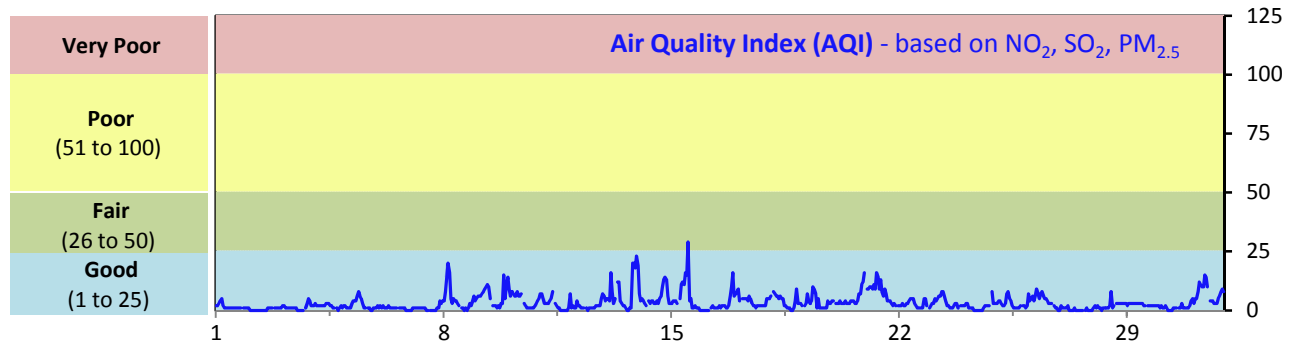


Parameters	Unit	Color Code for Wind Spd & Pollutant Conc. Class					
Wind Speed	m/s	0.3 ≤ WS < 1.4	1.4 ≤ WS < 3.1	3.1 ≤ WS < 7.8	7.8 ≤ WS < 10.8	10.8 ≤ WS < 13.6	WS ≥ 13.6
NO <sub>2</sub>	ppb	0 ≤ C < 5	5 ≤ C < 15	15 ≤ C < 30	30 ≤ C < 100	100 ≤ C < 212	C ≥ 212
O <sub>3</sub>	ppb	0 ≤ C < 10	10 ≤ C < 20	20 ≤ C < 40	40 ≤ C < 60	60 ≤ C < 82	C ≥ 82
PM <sub>2.5</sub>	ug/m <sup>3</sup>	0 ≤ C < 2	2 ≤ C < 4	4 ≤ C < 10	10 ≤ C < 20	20 ≤ C < 30	C ≥ 30

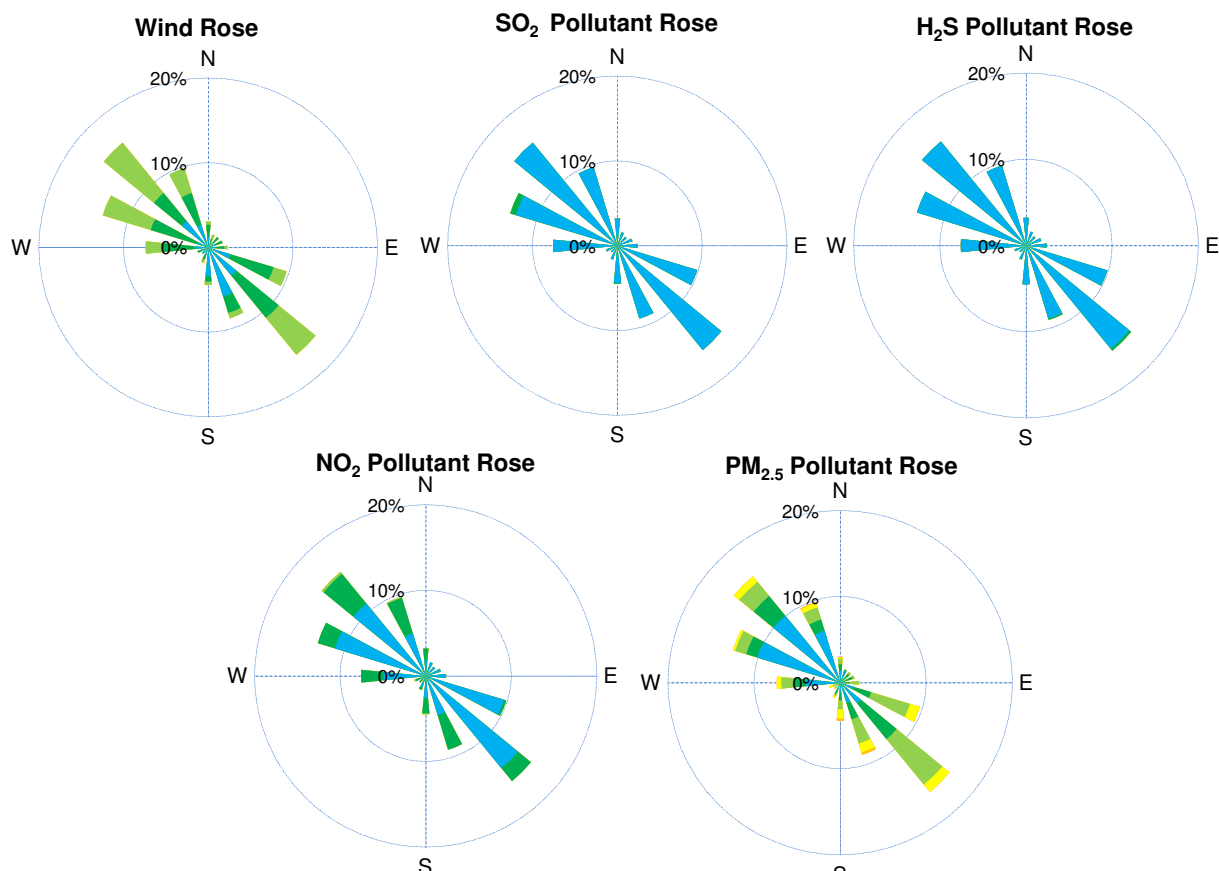
# WYAMZ Maidstone Station - October 2014 Summary Report

Pollutants		Month Records		24-Hour Records				1-Hour Records			
Name	Conc. Unit	Avg. Conc.	Uptime	Maximum		SAAQS Objective	Exceed Days	Maximum		SAAQS Objective	Exceed Hours
				Conc.	Time			Conc.	Time		
NO	ppb	1.2	100.0%	4.1	Oct-27	-	-	21.0	Oct-09 09:00	-	-
NO <sub>2</sub>	ppb	3.6	100.0%	7.2	Oct-22	-	-	18.1	Oct-07 21:00	212	0
NO <sub>x</sub>	ppb	4.8	100.0%	9.4	Oct-15	-	-	31.6	Oct-09 09:00	-	-
SO <sub>2</sub>	ppb	0.2	100.0%	0.4	Oct-18	57	0	1.8	Oct-21 12:00	172	0
H <sub>2</sub> S	ppb	0.2	100.0%	0.4	Oct-13	3.6	0	1.2	Oct-13 11:00	10.8	0
PM <sub>2.5</sub>	ug/m3	4	100.0%	10	Oct-13	30	0	37	Oct-15 12:00	-	-

SAAQS: Saskatchewan Ambient Air Quality Standards



## WYAMZ Maidstone Station - October 2014 Summary Report



Parameters	Unit	Color Code for Wind Spd & Pollutant Conc. Class					
Wind Speed	m/s	$0.3 \leq WS < 1.4$	$1.4 \leq WS < 3.1$	$3.1 \leq WS < 7.8$	$7.8 \leq WS < 10.8$	$10.8 \leq WS < 13.6$	$WS \geq 13.6$
SO <sub>2</sub>	ppb	$0 \leq C < 1$	$1 \leq C < 5$	$5 \leq C < 10$	$10 \leq C < 57$	$57 \leq C < 172$	$C \geq 172$
NO <sub>2</sub>	ppb	$0 \leq C < 5$	$5 \leq C < 15$	$15 \leq C < 30$	$30 \leq C < 100$	$100 \leq C < 212$	$C \geq 212$
H <sub>2</sub> S	ppb	$0 \leq C < 1$	$1 \leq C < 3.6$	$3.6 \leq C < 5$	$5 \leq C < 8$	$8 \leq C < 10.8$	$C \geq 10.8$
PM <sub>2.5</sub>	ug/m <sup>3</sup>	$0 \leq C < 2$	$2 \leq C < 4$	$4 \leq C < 10$	$10 \leq C < 20$	$20 \leq C < 30$	$C \geq 30$

### Monthly Update

\*All data has been slope, intercept, and baseline corrected. Data may change after validation process.

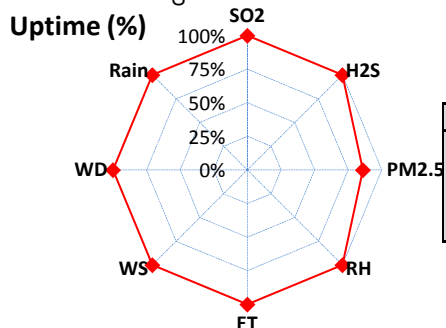
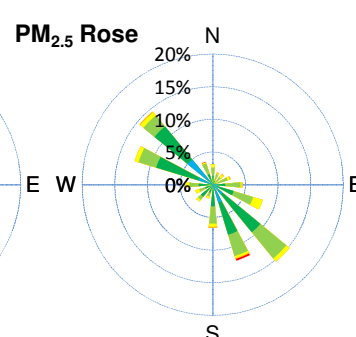
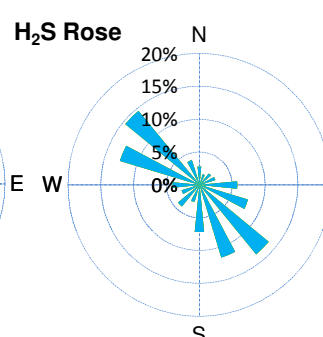
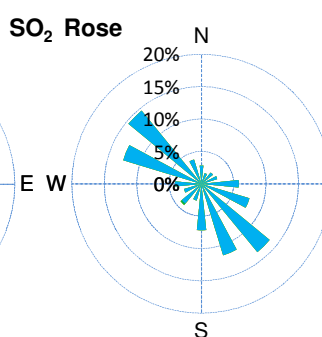
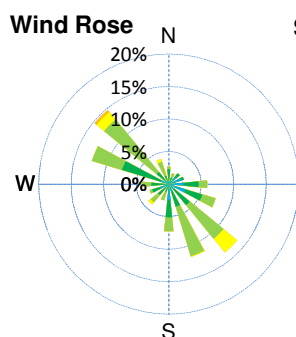
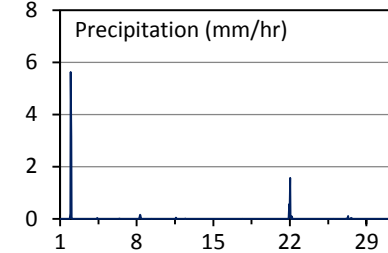
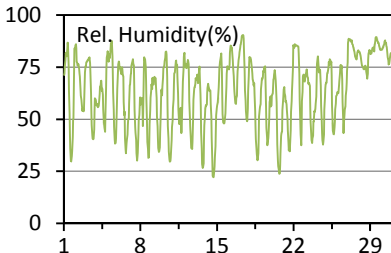
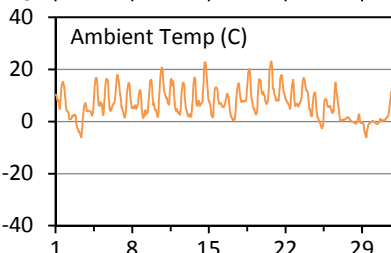
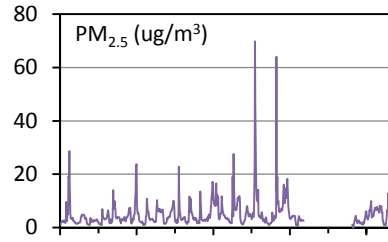
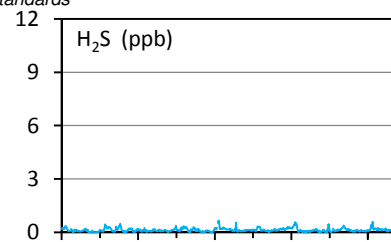
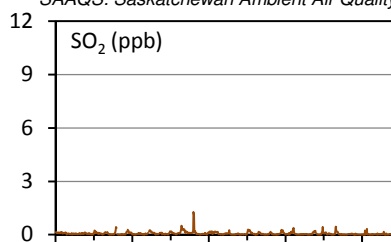
\*All compliance parameters were within the Saskatchewan Ambient Air Quality Standards.

\*All compliance parameters are above 90% operational. There are no operational issues to report.

## WYAMZ Kindersley Station - October 2014 Summary Report

Pollutants		Month Records		24-Hour Records				1-Hour Records			
Name	Conc. Unit	Avg. Conc.	Uptime	Maximum		SAAQS Objective	Exceed Days	Maximum		SAAQS Objective	Exceed Hours
				Conc.	Time			Conc.	Time		
SO <sub>2</sub>	ppb	0.1	100.0%	0.2	Oct-13	57	0	1.3	Oct-13 14:00	172	0
H <sub>2</sub> S	ppb	0.1	100.0%	0.3	Oct-15	3.6	0	0.7	Oct-15 08:00	10.8	0
PM <sub>2.5</sub>	ug/m3	5	86.0%	12	Oct-18	30	0	70	Oct-18 19:00	-	-

SAAQS: Saskatchewan Ambient Air Quality Standards



Parameters	Unit	Color Code for Wind Spd & Pollutant Conc. Class					
Wind Speed	m/s	0.3 ≤ WS < 1.4	1.4 ≤ WS < 3.1	3.1 ≤ WS < 7.8	7.8 ≤ WS < 10.8	10.8 ≤ WS < 13.6	WS ≥ 13.6
SO <sub>2</sub>	ppb	0 ≤ C < 1	1 ≤ C < 5	5 ≤ C < 10	10 ≤ C < 57	57 ≤ C < 172	C ≥ 172
H <sub>2</sub> S	ppb	0 ≤ C < 1	1 ≤ C < 3.6	3.6 ≤ C < 5	5 ≤ C < 8	8 ≤ C < 10.8	C ≥ 10.8
PM <sub>2.5</sub>	ug/m <sup>3</sup>	0 ≤ C < 2	2 ≤ C < 4	4 ≤ C < 10	10 ≤ C < 20	20 ≤ C < 30	C ≥ 30

### Monthly Update

\*All data has been slope, intercept, and baseline corrected. Data may change after validation process.

\*All compliance parameters were within the Saskatchewan Ambient Air Quality Standards.

\*All compliance parameters are above 90% operational, with the exception of the PM<sub>2.5</sub> analyzer. The pump had shut off, attributed to a power surge. The analyzer was not operational Oct 23 07:00 to Oct 27 15:00.