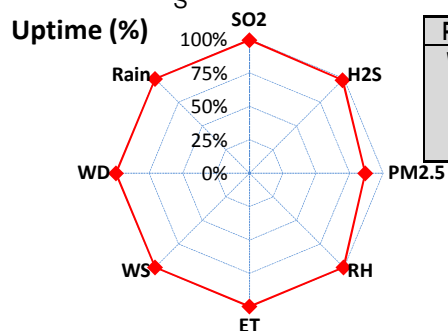
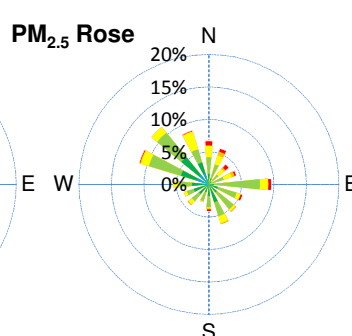
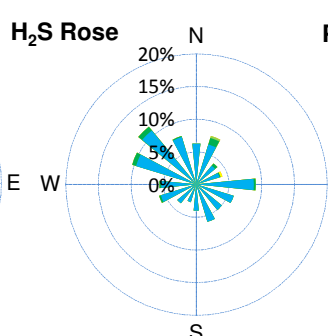
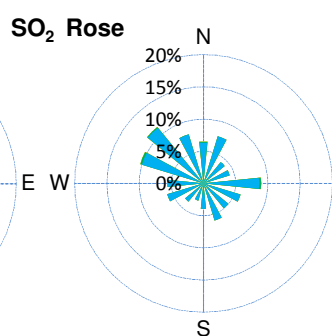
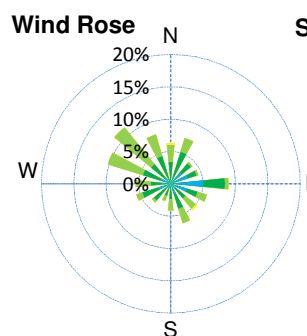
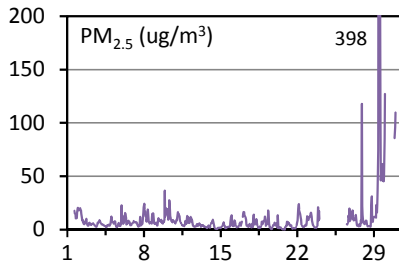
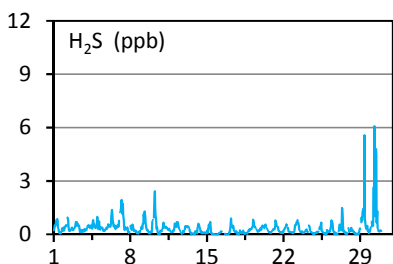
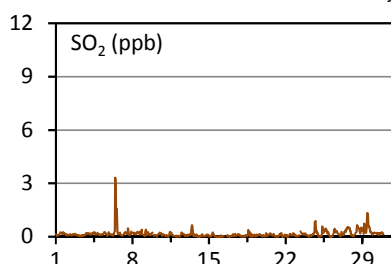


WYAMZ Kindersley Station - June 2015 Summary Report

Pollutants		Month Records		24-Hour Records				1-Hour Records			
Name	Conc. Unit	Avg. Conc.	Uptime	Maximum		SAAQS Objective	Exceed Days	Maximum		SAAQS Objective	Exceed Hours
				Conc.	Time			Conc.	Time		
SO ₂	ppb	0.2	99.6%	0.5	Jun-6	48	0	3.3	Jun-06 10:00	172	0
H ₂ S	ppb	0.4	98.5%	1.3	Jun-30	3.6	0	6.1	Jun-30 07:00	11	0
PM _{2.5}	ug/m3	10	86.6%	81	Jun-29	28	1	398	Jun-29 10:00	-	-

SAAQS: Saskatchewan Ambient Air Quality Standards



Parameters	Unit	Color Code for Wind Spd & Pollutant Conc. Class					
Wind Speed	m/s	0.3 ≤ WS < 1.4	1.4 ≤ WS < 3.1	3.1 ≤ WS < 7.8	7.8 ≤ WS < 10.8	10.8 ≤ WS < 13.6	WS ≥ 13.6
SO ₂	ppb	0 ≤ C < 1	1 ≤ C < 5	5 ≤ C < 10	10 ≤ C < 57	57 ≤ C < 172	C ≥ 172
H ₂ S	ppb	0 ≤ C < 1	1 ≤ C < 3.6	3.6 ≤ C < 5	5 ≤ C < 8	8 ≤ C < 10.8	C ≥ 10.8
PM _{2.5}	ug/m ³	0 ≤ C < 2	2 ≤ C < 4	4 ≤ C < 10	10 ≤ C < 20	20 ≤ C < 30	C ≥ 30

Monthly Update

*All data has been slope, intercept, and baseline corrected. Data may change after validation process.

*All compliance parameters were within the Saskatchewan Ambient Air Quality Standards, with the exception of 1 24-hour PM_{2.5} exceedance event, attributed to wildfire smoke in the region. Please refer to the exceedance summary table for details.

*All compliance parameters are above 90% operational, with the exception of the PM_{2.5} analyzer. It was not operational June 1 and 24-26 due to an operational error following power failures. The analyzer was also not operational on June 30, as high concentrations of PM_{2.5} associated with wildfire smoke caused the analyzer to malfunction.

*There are 10 hours of H₂S data, and 2-3 hours for all other parameters flagged as "power failure" intermittently throughout the month due to power disruptions. The H₂S analyzer is slower to recover following power issues.

*Routine quarterly calibrations were completed on June 16.

Exceedance Summary (24-Hour Average)

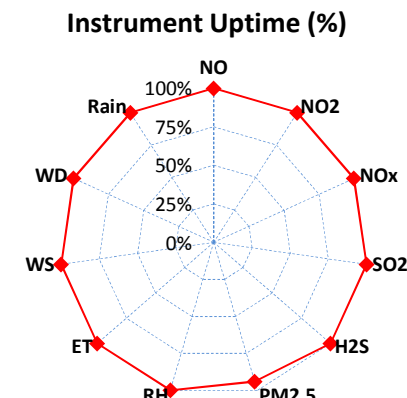
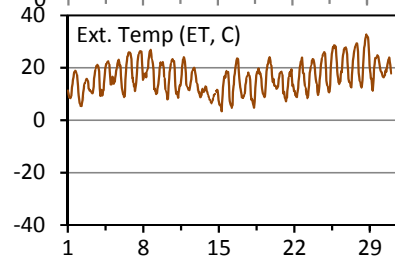
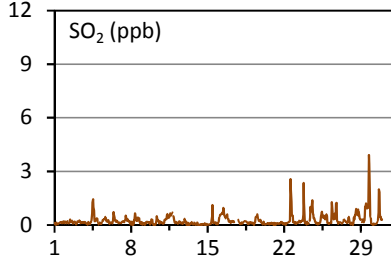
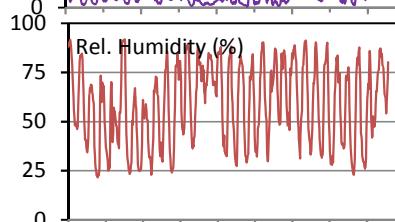
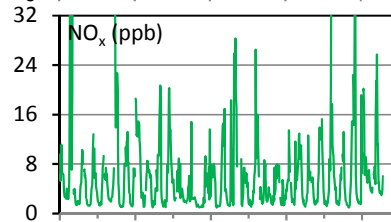
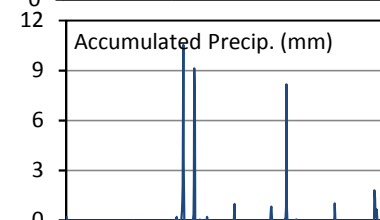
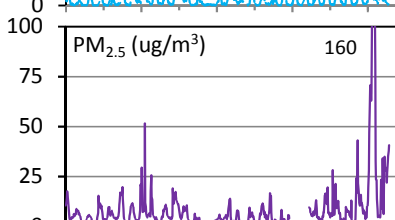
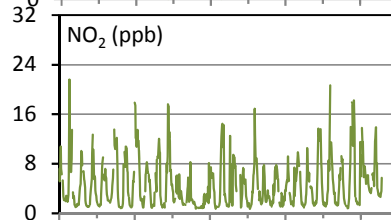
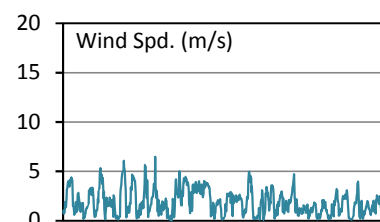
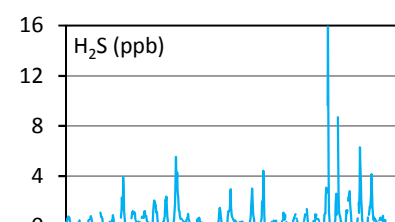
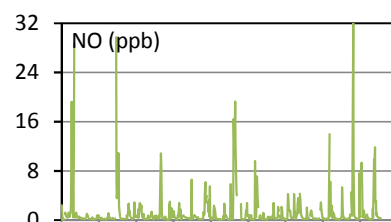
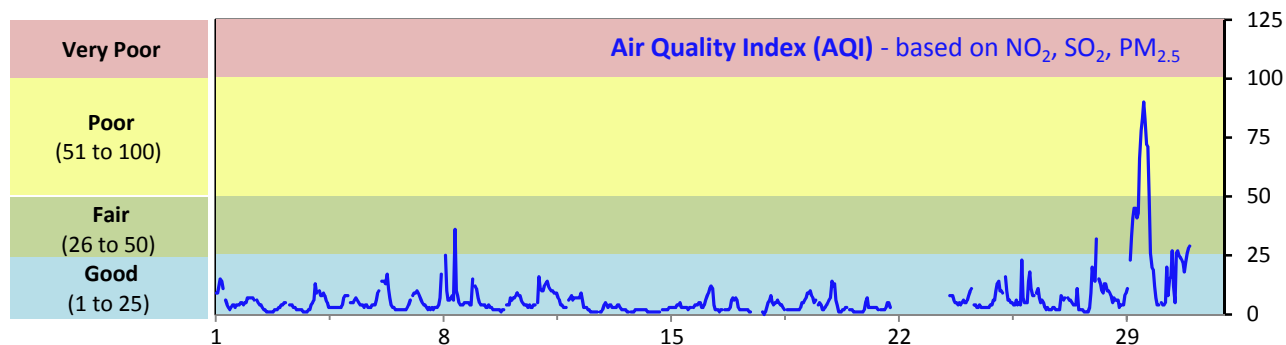
Pollutant	Conc. ppb	Exceedance Date mmm-dd	WS m/s	WD deg	Rain mm	ET C	SO ₂ ppb	H ₂ S ppb	PM _{2.5} ug/m3
PM _{2.5}	81	Jun-29	1.9	144	0.1	19.5	0.5	0.8	81



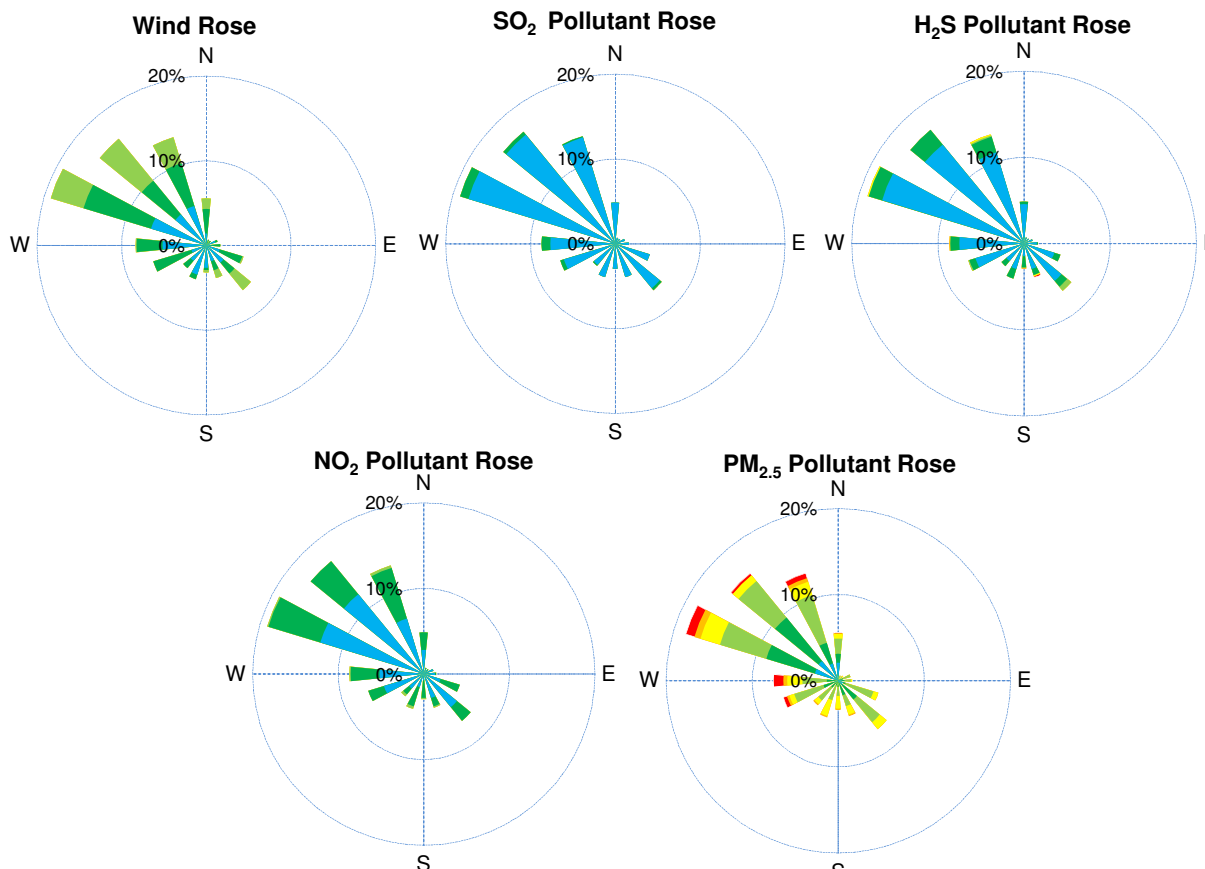
WYAMZ Maidstone Station - June 2015 Summary Report

Pollutants		Month Records		24-Hour Records				1-Hour Records			
Name	Conc. Unit	Avg. Conc.	Uptime	Maximum		SAAQS Objective	Exceed Days	Maximum		SAAQS Objective	Exceed Hours
				Conc.	Time			Conc.	Time		
NO	ppb	1.3	99.9%	3.5	Jun-28	-	-	32.0	Jun-28 08:00	-	-
NO ₂	ppb	4.6	99.9%	7.4	Jun-28	106	0	21.6	Jun-01 22:00	159	0
NO _x	ppb	5.9	99.9%	10.9	Jun-28	-	-	50.2	Jun-28 08:00	-	-
SO ₂	ppb	0.3	100.0%	0.9	Jun-29	48	0	3.9	Jun-29 17:00	172	0
H ₂ S	ppb	0.6	100.0%	1.9	Jun-25	3.6	0	15.9	Jun-25 07:00	11	1
PM _{2.5}	ug/m3	9	93.9%	66	Jun-29	28	1	160	Jun-29 12:00	-	-

SAAQS: Saskatchewan Ambient Air Quality Standards



WYAMZ Maidstone Station - June 2015 Summary Report



Parameters	Unit	Color Code for Wind Spd & Pollutant Conc. Class					
Wind Speed	m/s	$0.3 \leq WS < 1.4$	$1.4 \leq WS < 3.1$	$3.1 \leq WS < 7.8$	$7.8 \leq WS < 10.8$	$10.8 \leq WS < 13.6$	$WS \geq 13.6$
SO ₂	ppb	$0 \leq C < 1$	$1 \leq C < 5$	$5 \leq C < 10$	$10 \leq C < 57$	$57 \leq C < 172$	$C \geq 172$
NO ₂	ppb	$0 \leq C < 5$	$5 \leq C < 15$	$15 \leq C < 30$	$30 \leq C < 100$	$100 \leq C < 212$	$C \geq 212$
H ₂ S	ppb	$0 \leq C < 1$	$1 \leq C < 3.6$	$3.6 \leq C < 5$	$5 \leq C < 8$	$8 \leq C < 10.8$	$C \geq 10.8$
PM _{2.5}	ug/m ³	$0 \leq C < 2$	$2 \leq C < 4$	$4 \leq C < 10$	$10 \leq C < 20$	$20 \leq C < 30$	$C \geq 30$

Monthly Update

*All data has been slope, intercept, and baseline corrected. Data may change after validation process.

*All compliance parameters were within the Saskatchewan Ambient Air Quality Standards, with the exception of one 1-hour H₂S and one 24-hour PM_{2.5} exceedance event (attributed to wildfire smoke in the region). Please refer to the exceedance summary table for details.

*All compliance parameters were greater than 90% operational this month.

*1 hour of NO/NO₂/NO_x and PM_{2.5} data is flagged as "power failure" on June 21 due to a power disruption. All analyzers were affected; NO/NO₂/NO_x was slower to recover. The PM_{2.5} analyzer malfunctioned following this disruption, 42 hours are flagged as "analyzer failure".

*Routine quarterly calibrations were completed on June 17.

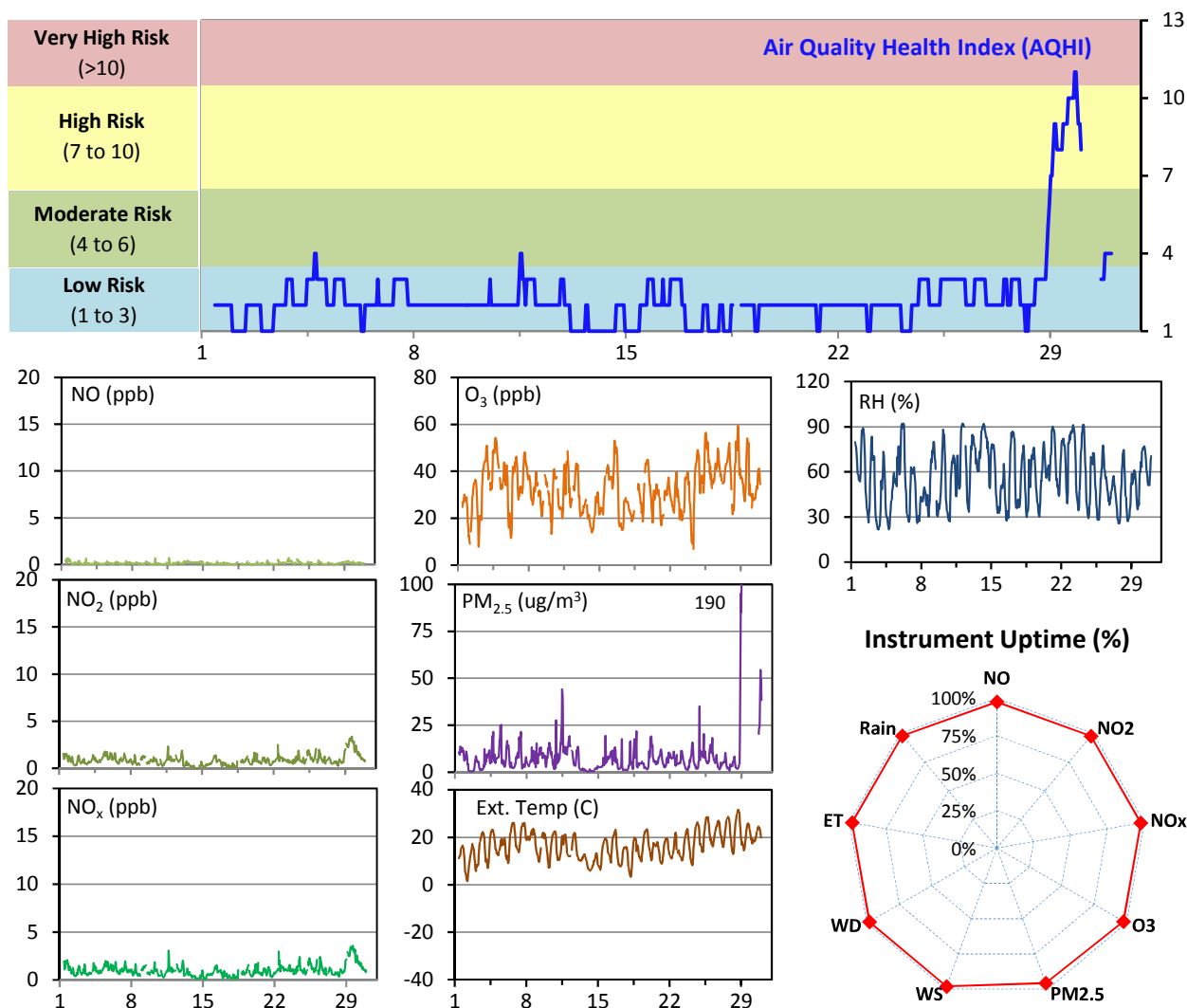
Exceedance Summary

1-hour Exceedance Information			Summary of Other Parameters During Exceedance								
Pollutant	Conc. ppb	Exceedance Time mmm-dd hh:mm	WS m/s	WD deg	AQI -	Rain mm	ET C	SO ₂ ppb	NO ₂ ppb	H ₂ S ppb	PM _{2.5} ug/m3
H2S	15.9	Jun-25 07:00	0.7	153	10	0.0	13.5	0	8	15.9	12
24-hour Exceedance Information			WS	WD	AQI	Rain	ET	SO ₂	NO ₂	H ₂ S	PM _{2.5}
PM2.5	66	Jun-29	1.1	293	42	0.0	19.8	1	6	1.1	66

WYAMZ Meadow Lake Station - June 2015 Summary Report

Pollutants		Month Records		24-Hour Records				1-Hour Records			
Name	Conc. Unit	Avg. Conc.	Uptime	Maximum		SAAQS Objective	Exceed Days	Maximum		SAAQS Objective	Exceed Hours
				Conc.	Time			Conc.	Time		
NO	ppb	0.1	97.7%	0.3	Jun-23	-	-	0.7	Jun-11 15:00	-	-
NO ₂	ppb	0.9	97.7%	2.6	Jun-29	106	0	3.4	Jun-29 15:00	159	0
NO _x	ppb	1.0	97.7%	2.9	Jun-29	-	-	3.6	Jun-29 15:00	-	-
O ₃	ppb	33	97.7%	44	Jun-25	-	-	59	Jun-28 17:00	82	0
PM _{2.5}	ug/m3	12	95.7%	142	Jun-29	28	1	190	Jun-29 19:00	-	-

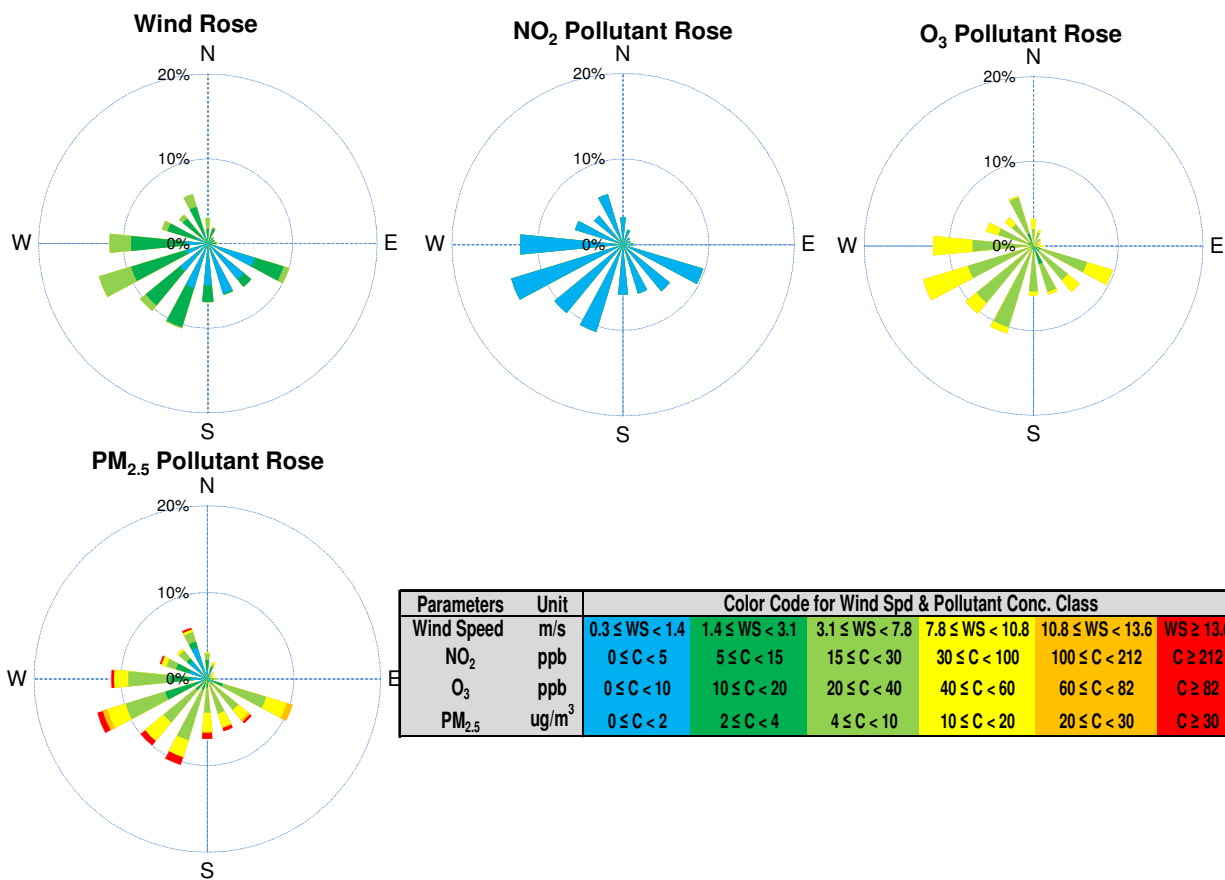
SAAQS: Saskatchewan Ambient Air Quality Standards



Monthly Update

- *All data has been slope, intercept, and baseline corrected. Data may change after validation process.
- *All compliance parameters were within the Saskatchewan Ambient Air Quality Standards, with the exception of one 24-hour PM_{2.5} exceedance event. Please refer to the exceedance summary table for details.
- *All compliance parameters were greater than 90% operational.
- *There are 9 hours of data for all parameters flagged as "power failure" on June 1, and an additional 5-7 hours flagged as "power failure" intermittently throughout the month due to power disruptions.
- *There are 17 hours of PM_{2.5} data on June 29-30 flagged as "analyzer failure". High PM_{2.5} concentrations associated with wildfire smoke caused the analyzer to malfunction.
- *Routine quarterly calibrations were completed on June 18.

WYAMZ Meadow Lake Station - June 2015 Summary Report

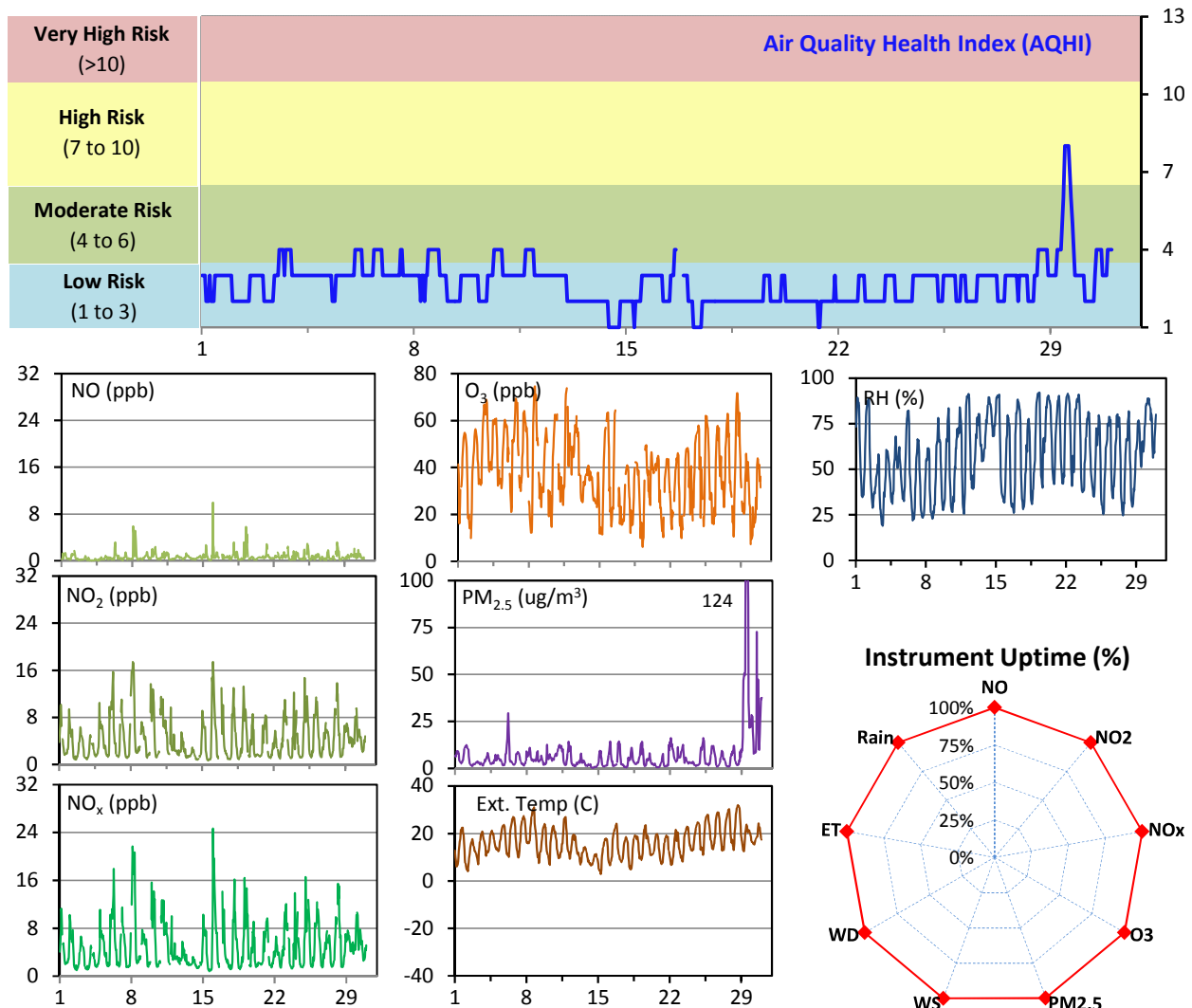


Exceedance Summary (24-Hour Average)											
Pollutant	Conc. ppb	Exceedance Date mmm-dd	WS m/s	WD deg	AQHI -	Rain mm	NO ppb	NO2 ppb	NOx ppb	O3 ppb	PM2.5 ug/m3
PM2.5	142	Jun-29	0.9	223	9	0.0	0	3	3	38	142

WYAMZ Unity Station - June 2015 Summary Report

Pollutants		Month Records		24-Hour Records				1-Hour Records			
Name	Conc. Unit	Avg. Conc.	Uptime	Maximum		SAAQS Objective	Exceed Days	Maximum		SAAQS Objective	Exceed Hours
				Conc.	Time			Conc.	Time		
NO	ppb	0.7	100.0%	1.4	Jun-19	-	-	10.0	Jun-15 23:00	-	-
NO ₂	ppb	4.3	100.0%	7.6	Jun-8	106	0	17.4	Jun-08 05:00	159	0
NO _x	ppb	4.9	100.0%	9.0	Jun-8	-	-	24.7	Jun-15 23:00	-	-
O ₃	ppb	38	100.0%	52	Jun-3	-	-	75	Jun-08 14:00	82	0
PM _{2.5}	ug/m3	7	99.9%	54	Jun-29	28	1	124	Jun-29 10:00	-	-

SAAQS: Saskatchewan Ambient Air Quality Standards



Monthly Update

*All data has been slope, intercept, and baseline corrected. Data may change after validation process.

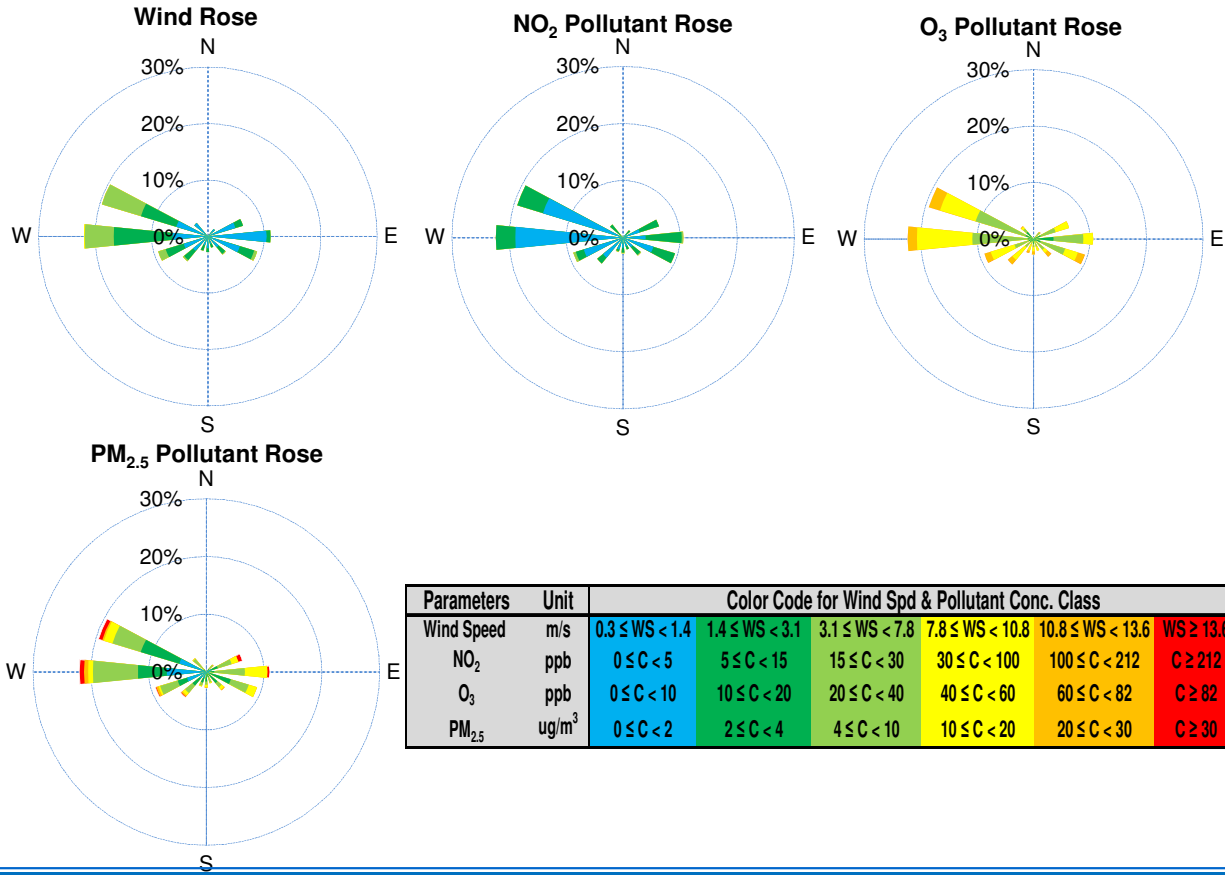
*All compliance parameters were within the Saskatchewan Ambient Air Quality Standards, with the exception of one 24-hour PM_{2.5} exceedance event attributed to wildfire smoke in the region. Please refer to the exceedance summary table for details.

*All compliance parameters are greater than 90% operational.

*1 hour of PM_{2.5} data is flagged as "analyzer failure" on June 17 due to abnormal data readings.

*Routine quarterly calibrations were completed on June 16.

WYAMZ Unity Station - June 2015 Summary Report



Parameters	Unit	Color Code for Wind Spd & Pollutant Conc. Class					
Wind Speed	m/s	$0.3 \leq WS < 1.4$	$1.4 \leq WS < 3.1$	$3.1 \leq WS < 7.8$	$7.8 \leq WS < 10.8$	$10.8 \leq WS < 13.6$	$WS \geq 13.6$
NO ₂	ppb	$0 \leq C < 5$	$5 \leq C < 15$	$15 \leq C < 30$	$30 \leq C < 100$	$100 \leq C < 212$	$C \geq 212$
O ₃	ppb	$0 \leq C < 10$	$10 \leq C < 20$	$20 \leq C < 40$	$40 \leq C < 60$	$60 \leq C < 82$	$C \geq 82$
PM _{2.5}	ug/m ³	$0 \leq C < 2$	$2 \leq C < 4$	$4 \leq C < 10$	$10 \leq C < 20$	$20 \leq C < 30$	$C \geq 30$

Exceedance Summary											
Pollutant	Conc.	Exceedance Date mmm-dd	WS m/s	WD deg	AQHI -	Rain mm	NO ppb	NO ₂ ppb	NO _x ppb	O ₃ ppb	PM _{2.5} ug/m ³
PM _{2.5}	54	Jun-29	0.9	181	5	0.0	1	5	6	29	54