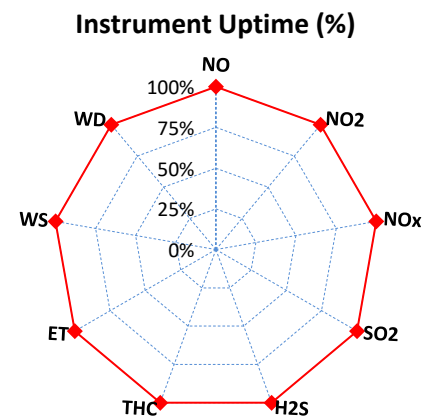
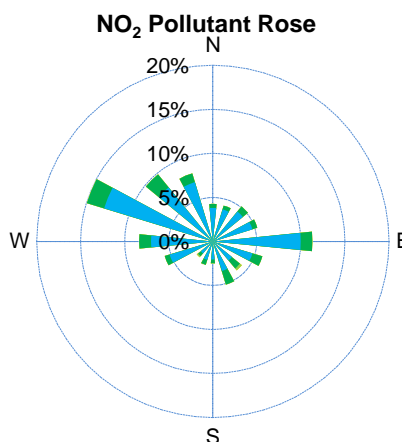
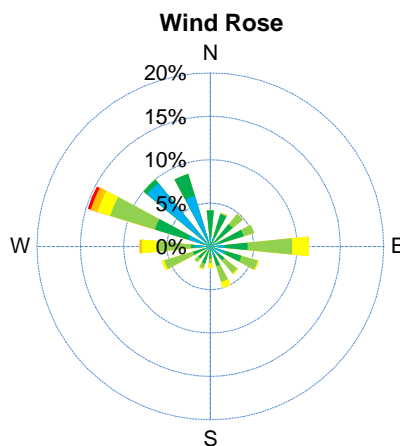
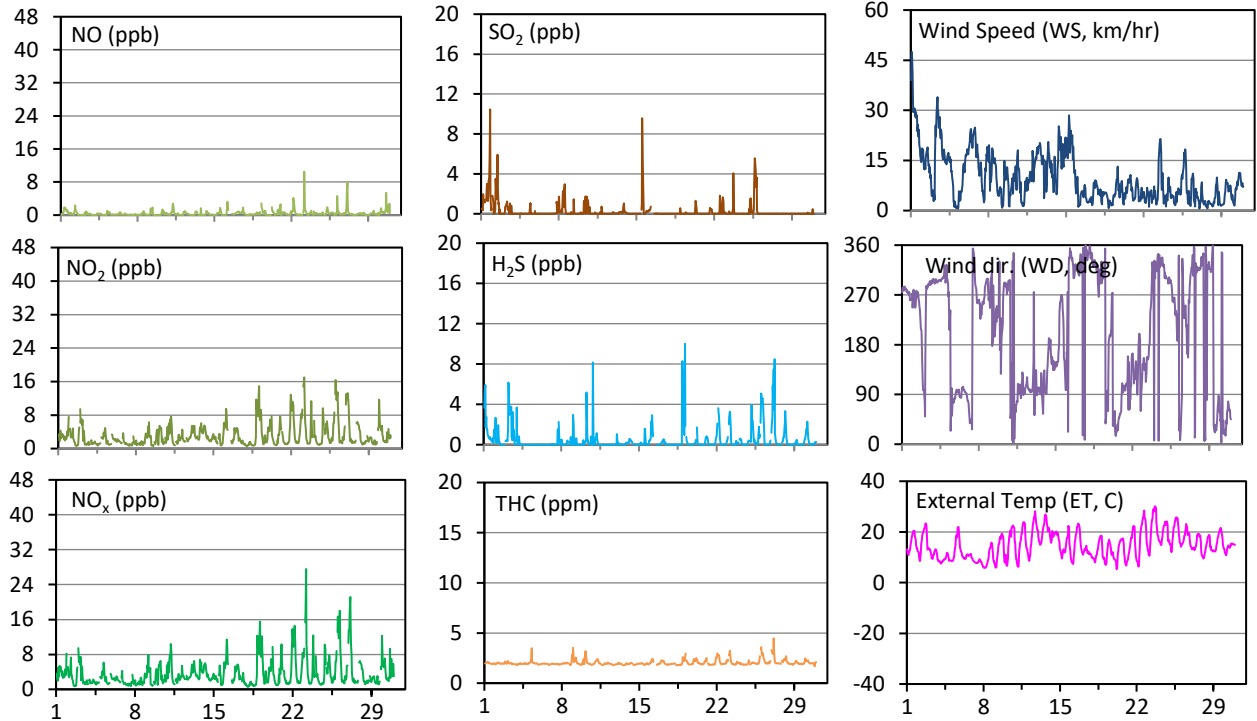


Husky Oil Operations Limited East Station - June 2020 Summary Report

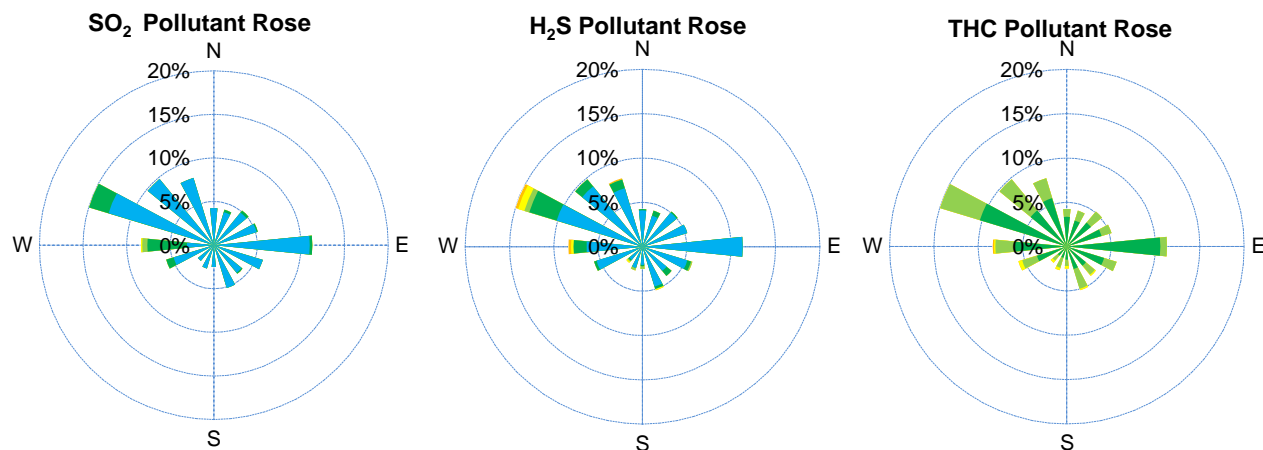
Pollutants		Month Records		24-Hour Records				1-Hour Records			
Name	Conc. Unit	Avg. Conc.	Uptime	Maximum		SAAQS Standards	Exceed Days	Maximum		SAAQS Standards	Exceed Hours
				Conc.	Time			Conc.	Time		
NO	ppb	0.4	100.0%	1.1	Jun-30	-	-	10.5	Jun-23 05:00	-	-
NO ₂	ppb	3.1	100.0%	6.0	Jun-26	106	0	17.0	Jun-23 05:00	159	0
NO _x	ppb	3.6	100.0%	6.5	Jun-26	-	-	27.6	Jun-23 05:00	-	-
SO ₂	ppb	0.3	100.0%	2.0	Jun-1	48	0	10.5	Jun-01 20:00	172	0
H ₂ S	ppb	0.5	100.0%	1.9	Jun-3	3.6	0	10.0	Jun-19 04:00	11.0	0
THC	ppm	2.0	100.0%	2.4	Jun-26	-	-	4.5	Jun-27 04:00	-	-

SAAQS: Saskatchewan Ambient Air Quality Standards



Parameters	Unit	Color Code for Wind Spd & Pollutant Conc. Class					
Wind Speed	km/hr	$1 \leq WS < 5$	$5 \leq WS < 10$	$10 \leq WS < 20$	$20 \leq WS < 30$	$30 \leq WS < 40$	$WS \geq 40$
SO ₂	ppb	$0 \leq C < 1$	$1 \leq C < 5$	$5 \leq C < 10$	$10 \leq C < 57$	$57 \leq C < 172$	$C \geq 172$
NO ₂	ppb	$0 \leq C < 5$	$5 \leq C < 15$	$15 \leq C < 30$	$30 \leq C < 100$	$100 \leq C < 212$	$C \geq 212$
H ₂ S	ppb	$0 \leq C < 1$	$1 \leq C < 3.6$	$3.6 \leq C < 5$	$5 \leq C < 8$	$8 \leq C < 11$	$C \geq 11$
THC	ppm	$0 \leq C < 1$	$1 \leq C < 2$	$2 \leq C < 3$	$3 \leq C < 4$	$4 \leq C < 5$	$C \geq 5$

Husky Oil Operations Limited East Station - June 2020 Summary Report



Monthly Update

*Air monitoring data has been validated. Data may change after validation process.

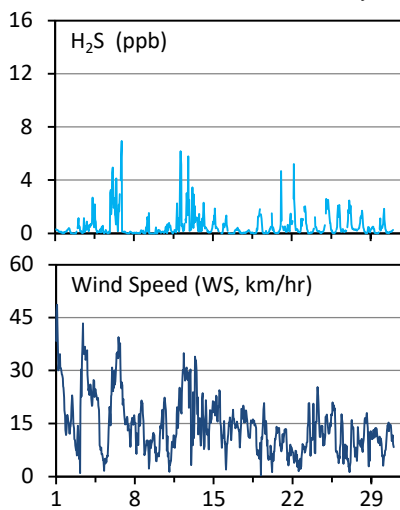
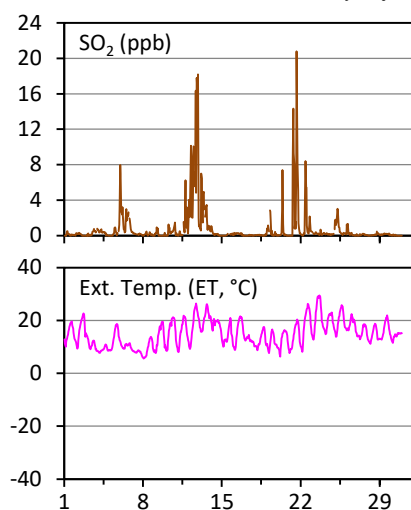
*All compliance parameters were within the Saskatchewan Ambient Air Quality Standards.

*All compliance parameters were 100% operational. There are no operational issues to report.

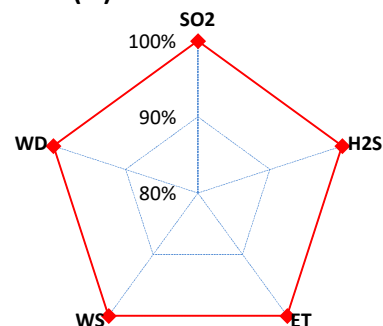
Husky Oil Operations Limited West Station - June 2020 Summary Report

Pollutants		Month Records		24-Hour Records				1-Hour Records			
Name	Conc. Unit	Avg. Conc.	Uptime	Maximum		AAAQO / SAAQS	Exceed Days	Maximum		AAAQO / SAAQS	Exceed Hours
				Conc.	Time			Conc.	Time		
SO ₂	ppb	0.8	100.0%	7.4	Jun-12	48 / 48	0 / 0	20.8	Jun-21 16:00	172 / 172	0 / 0
H ₂ S	ppb	0.5	100.0%	2.5	Jun-6	3 / 3.6	0 / 0	7.0	Jun-06 22:00	10 / 11.0	0 / 0

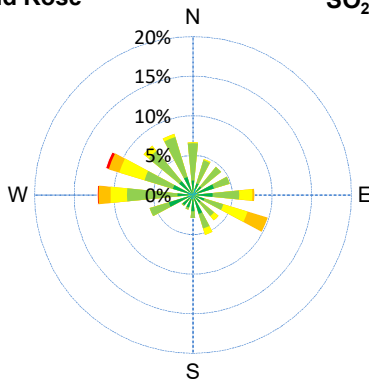
AAAQO: Alberta Ambient Air Quality Objectives; SAAQS: Saskatchewan Ambient Air Quality Standards.



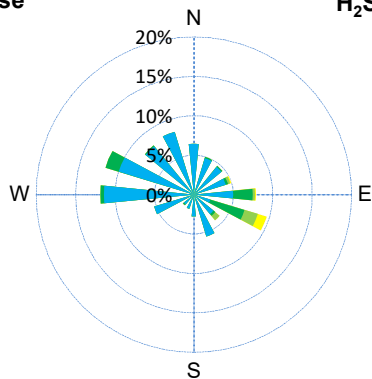
Uptime (%)



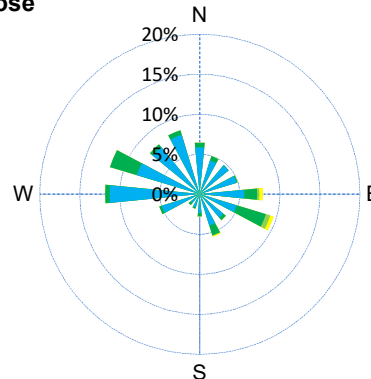
Wind Rose



SO₂ Rose



H₂S Rose



Parameters	Unit	Color Code for Wind Spd & Pollutant Conc. Class					
Wind Speed	km/hr	1 ≤ WS < 5	5 ≤ WS < 10	10 ≤ WS < 20	20 ≤ WS < 30	30 ≤ WS < 40	WS ≥ 40
SO ₂	ppb	0 ≤ C < 1	1 ≤ C < 5	5 ≤ C < 10	10 ≤ C < 57	57 ≤ C < 172	C ≥ 172
H ₂ S	ppb	0 ≤ C < 1	1 ≤ C < 3.6	3.6 ≤ C < 5	5 ≤ C < 8	8 ≤ C < 11	C ≥ 11

Monthly Update

*Air monitoring data has been validated. Data may change after validation process.

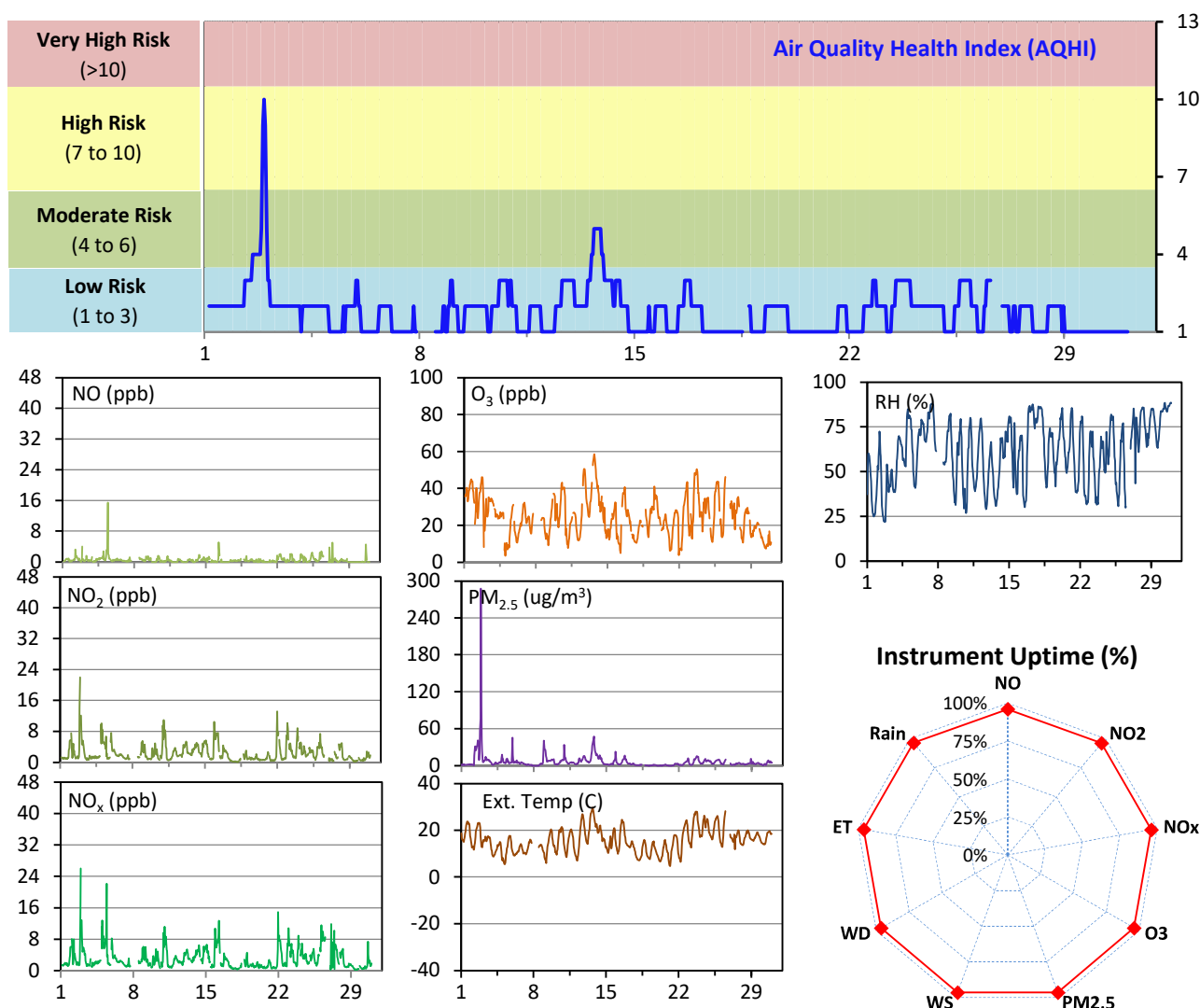
*All compliance parameters were within the Alberta Ambient Air Quality Objectives and the Saskatchewan Ambient Air Quality Standards.

*All compliance parameters were 100% operational. There are no operational issues to report.

WYAMZ Clavet Station - June 2020 Summary Report

Pollutants		Month Records		24-Hour Records				1-Hour Records			
Name	Conc. Unit	Avg. Conc.	Uptime	Maximum		SAAQS Objective	Exceed Days	Maximum		SAAQS Objective	Exceed Hours
				Conc.	Time			Conc.	Time		
NO	ppb	0.5	96.0%	1.8	Jun-5	-	-	15.5	Jun-05 10:00	-	-
NO ₂	ppb	2.3	96.0%	4.1	Jun-5	106	0	22.0	Jun-02 22:00	159	0
NO _x	ppb	3.0	96.0%	5.9	Jun-5	-	-	26.0	Jun-02 22:00	-	-
O ₃	ppb	25	96.2%	41	Jun-13	-	-	59	Jun-13 17:00	82	0
PM _{2.5}	ug/m3	6	96.4%	39	Jun-2	28	1	288	Jun-02 21:00	-	-

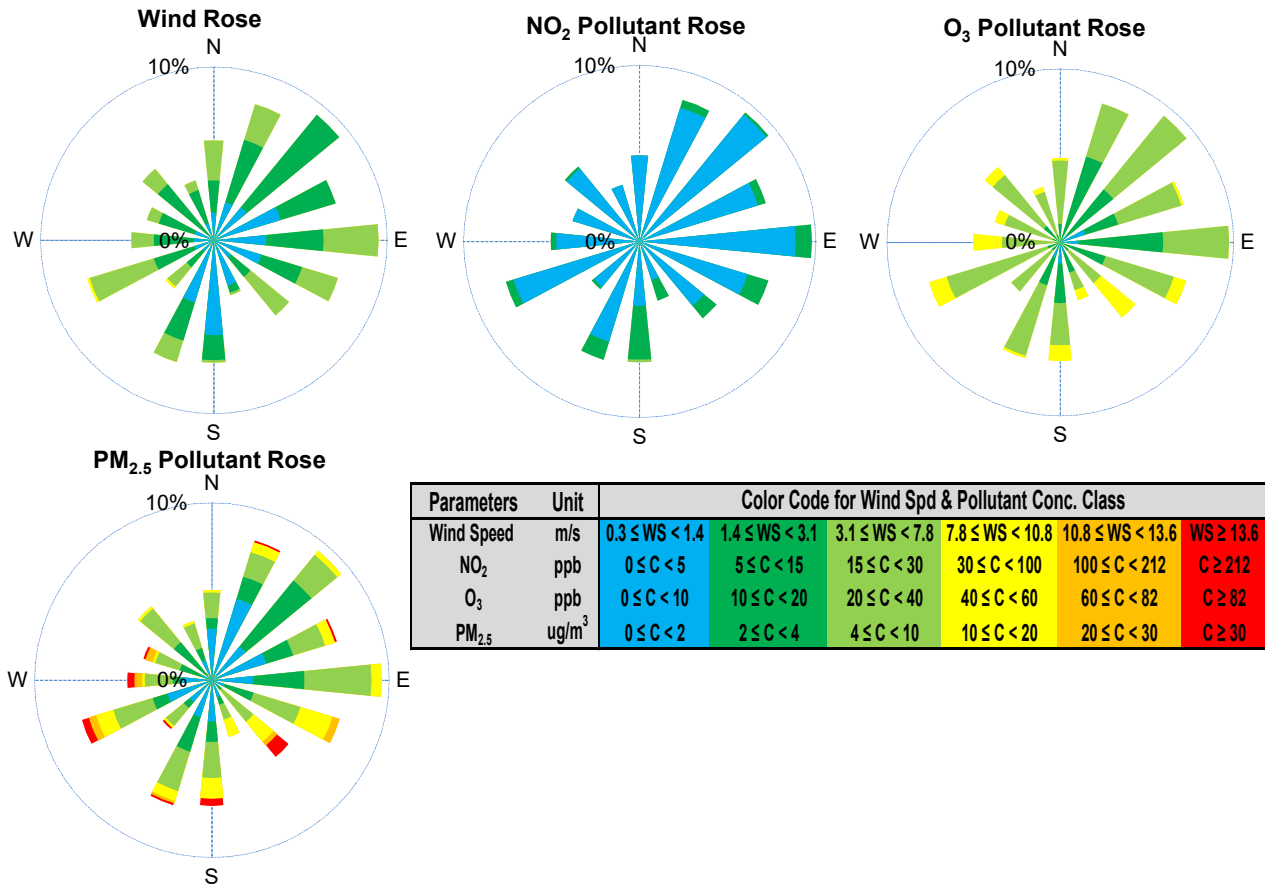
SAAQS: Saskatchewan Ambient Air Quality Standards



Monthly Update

- *All data has been slope, intercept, and baseline corrected. Data may change after validation process.
- *All compliance parameters were within the Saskatchewan Ambient Air Quality Standards with the exception of PM_{2.5} on June 2.
- *All compliance parameters were greater than 90% operational for the month.
- * Sixteen hours of data flagged as "analyzer failure" for all parameters on June 7 due to instrumentation issues.
- * Eleven hours of data flagged as "power failure" for all parameters on June 26 due to a power outage on site.

WYAMZ Clavet Station - June 2020 Summary Report

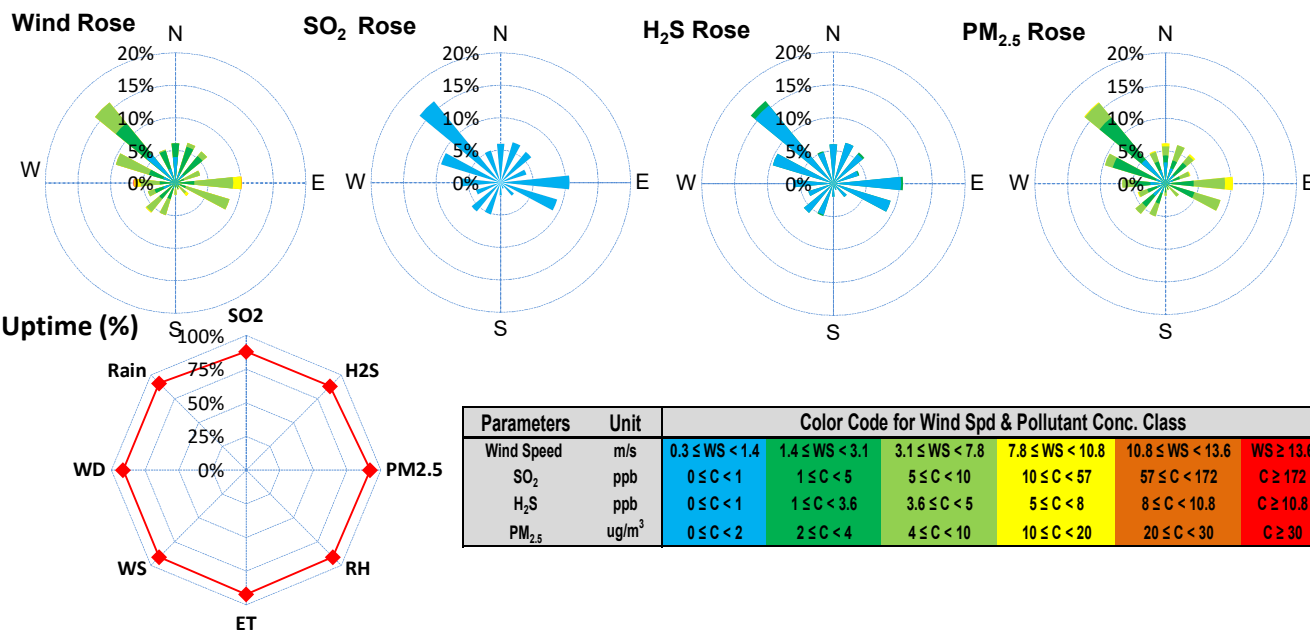
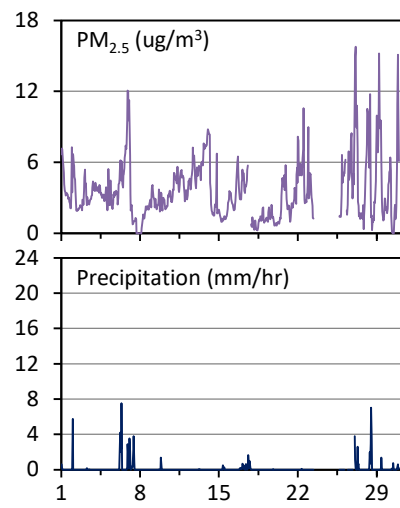
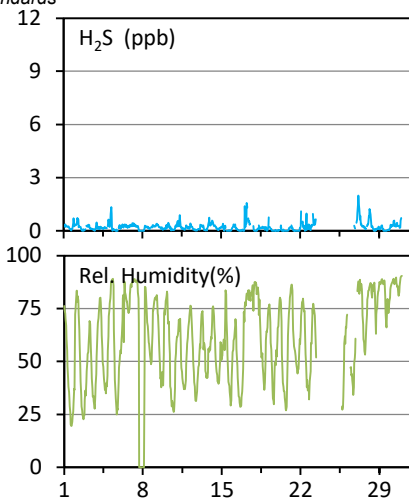
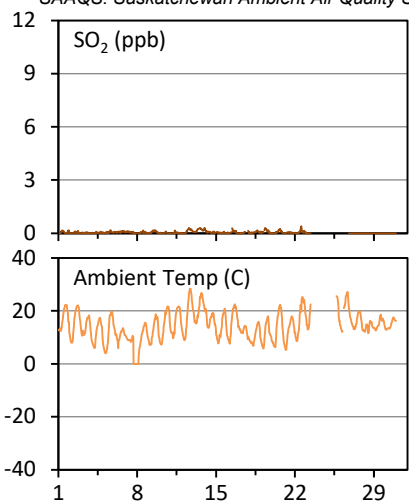


Exceedance Summary											
Pollutant	Conc.	Exceedance Date	WS	WD	AQHI	Rain	NO	NO2	NOx	O3	PM2.5
		mmm-dd	m/s	deg	-	mm	ppb	ppb	ppb	ppb	ug/m3
PM2.5	39	Jun-2	2.0	246	4	3.9	1	4	5	33	39

WYAMZ Kerrobert Station - June 2020 Summary Report

Pollutants		Month Records		24-Hour Records				1-Hour Records			
Name	Conc. Unit	Avg. Conc.	Uptime	Maximum		SAAQS Objective	Exceed Days	Maximum		SAAQS Objective	Exceed Hours
SO ₂	ppb	< 0.1	88.1%	0.2	Jun-13	48	0	0.4	Jun-22 13:00	172	0
H ₂ S	ppb	0.2	88.1%	0.6	Jun-27	3.6	0	2.0	Jun-27 04:00	11	0
PM _{2.5}	ug/m3	4	92.2%	6	Jun-13	28	0	16	Jun-27 03:00	-	-

SAAQS: Saskatchewan Ambient Air Quality Standards



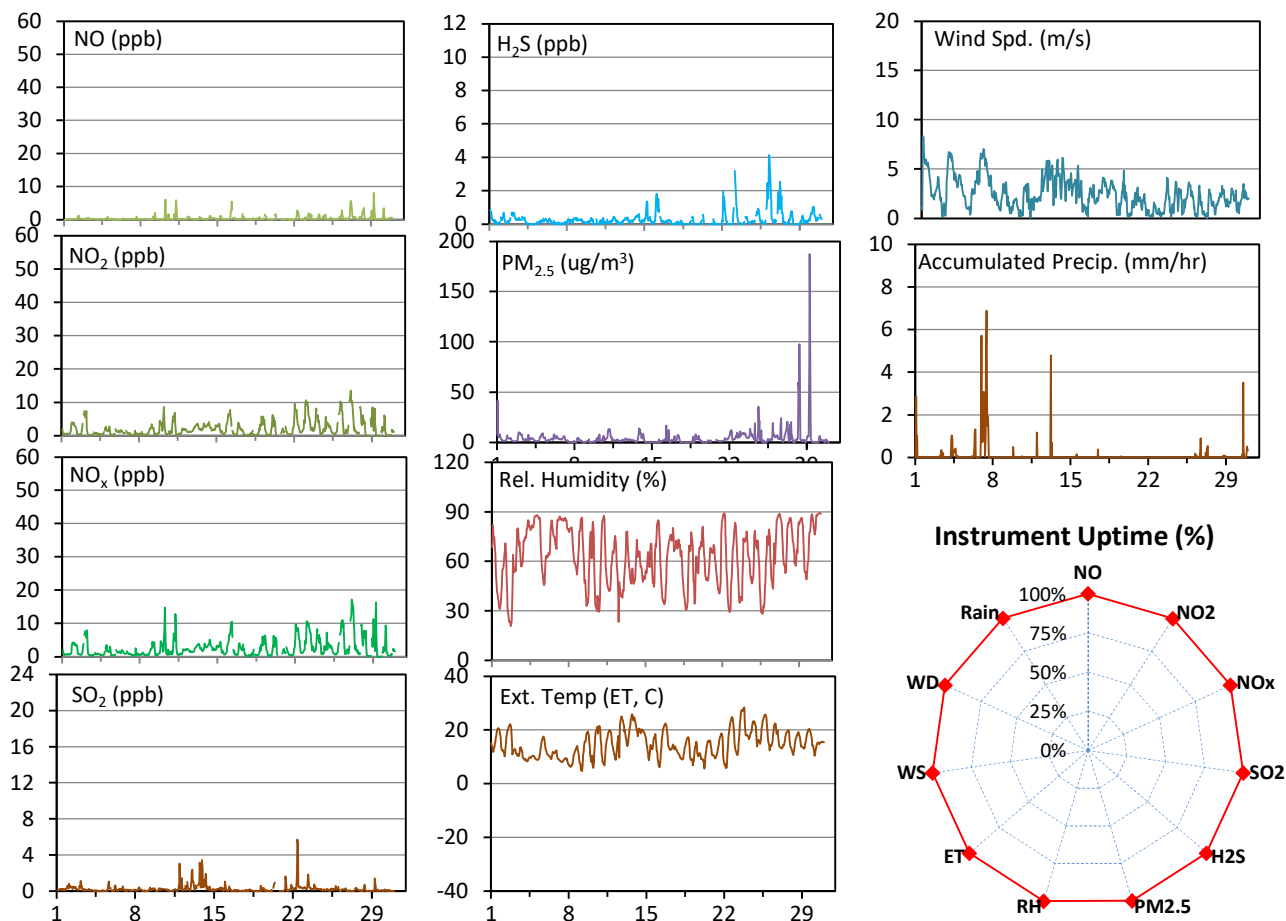
Monthly Update

- *All data has been slope, intercept, and baseline corrected. Data may change after validation process.
- *All compliance parameters were within the Saskatchewan Ambient Air Quality Standards.
- *All compliance parameters were greater than 90% operational with the exception of the SO₂ and H₂S analyzers.
- * 28 hours of data flagged as "analyzer failure" for SO₂ and H₂S, 9 hours of precipitation, relative humidity, wind speed and wind direction and 2 hours for PM_{2.5} and external temperature for due to instrumentation issues.
- * 54 hours of data flagged as "power failure" due to a power outage on site.

WYAMZ Maidstone Station - June 2020 Summary Report

Pollutants		Month Records		24-Hour Records				1-Hour Records			
Name	Conc. Unit	Avg. Conc.	Uptime	Maximum		SAAQS Objective	Exceed Days	Maximum		SAAQS Objective	Exceed Hours
				Conc.	Time			Conc.	Time		
NO	ppb	0.4	99.9%	1.4	Jun-27	-	-	8.2	Jun-29 06:00	-	-
NO ₂	ppb	2.1	99.9%	5.1	Jun-27	106	0	13.6	Jun-27 02:00	159	0
NO _x	ppb	2.5	99.9%	6.5	Jun-27	-	-	17.2	Jun-27 02:00	-	-
SO ₂	ppb	0.2	99.9%	1.1	Jun-13	48	0	5.7	Jun-22 09:00	172	0
H ₂ S	ppb	0.3	99.9%	1.3	Jun-26	3.6	0	4.1	Jun-26 05:00	11	0
PM _{2.5}	ug/m3	4	99.9%	17	Jun-29	28	0	188	Jun-29 06:00	-	-

SAAQS: Saskatchewan Ambient Air Quality Standards



Monthly Update

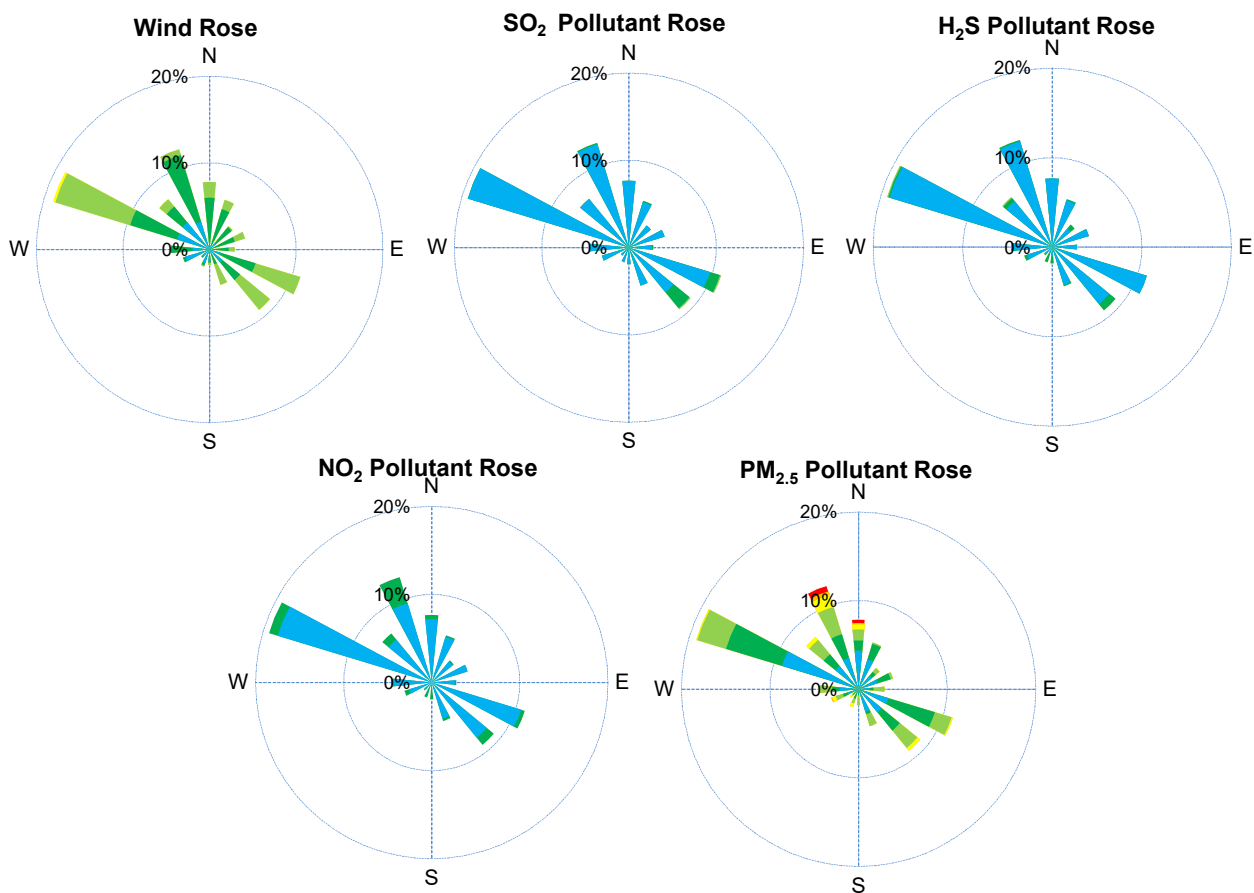
* All data has been slope, intercept, and baseline corrected. Data may change after validation process.

* All compliance parameters were within the Saskatchewan Ambient Air Quality Standards.

* All compliance parameters were greater than 90% operational.

* One hours of data was flagged as "analyzer failure" for all parameters due to an instrumentation issue.

WYAMZ Maidstone Station - June 2020 Summary Report

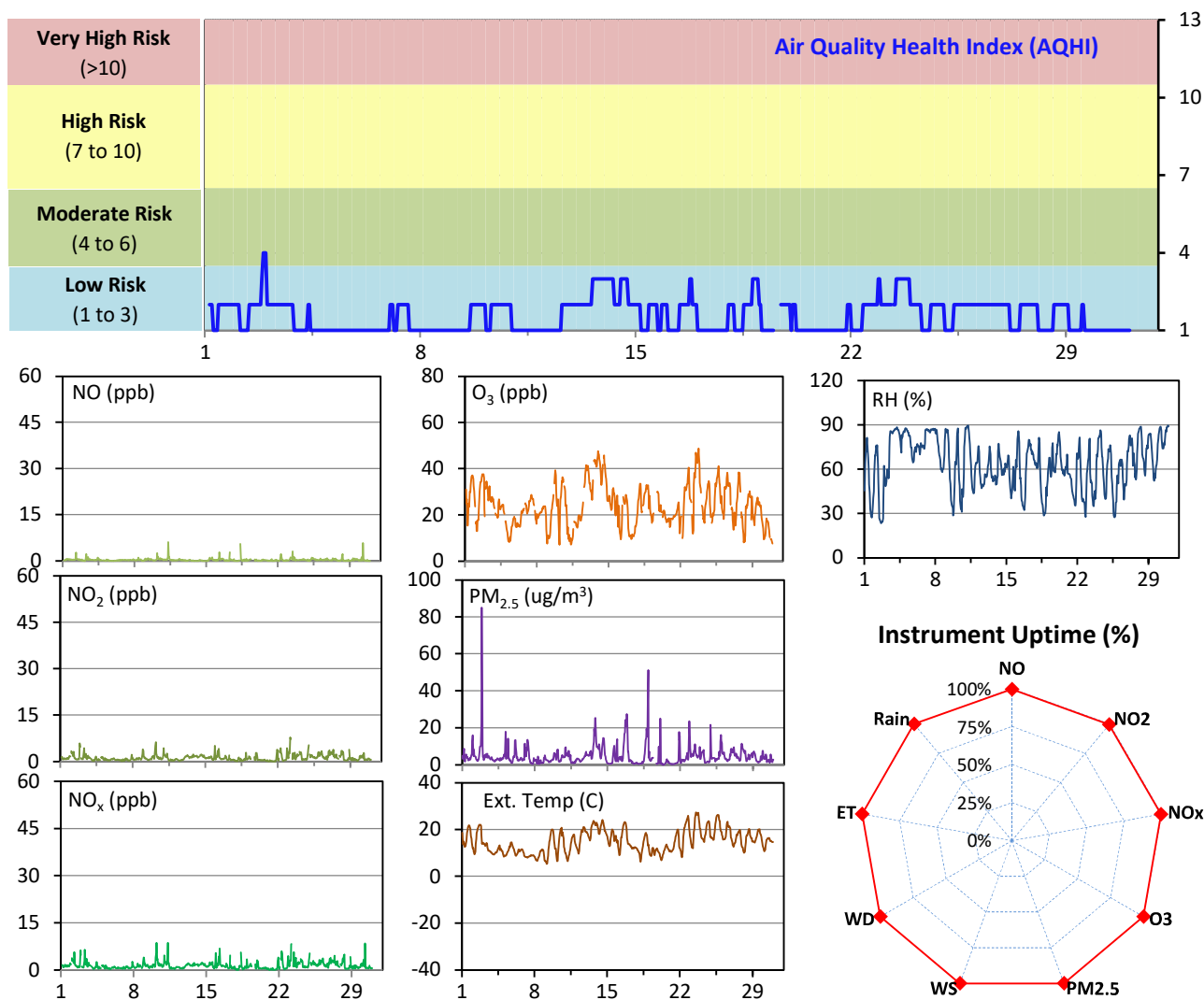


Parameters	Unit	Color Code for Wind Spd & Pollutant Conc. Class						
Wind Speed	m/s	$0.3 \leq WS < 1.4$	$1.4 \leq WS < 3.1$	$3.1 \leq WS < 7.8$	$7.8 \leq WS < 10.8$	$10.8 \leq WS < 13.6$	$WS \geq 13.6$	
SO ₂	ppb	$0 \leq C < 1$	$1 \leq C < 5$	$5 \leq C < 10$	$10 \leq C < 57$	$57 \leq C < 172$	$C \geq 172$	
NO ₂	ppb	$0 \leq C < 5$	$5 \leq C < 15$	$15 \leq C < 30$	$30 \leq C < 100$	$100 \leq C < 212$	$C \geq 212$	
H ₂ S	ppb	$0 \leq C < 1$	$1 \leq C < 3.6$	$3.6 \leq C < 5$	$5 \leq C < 8$	$8 \leq C < 10.8$	$C \geq 10.8$	

WYAMZ Meadow Lake City Station - June 2020 Summary Report

Pollutants		Month Records		24-Hour Records				1-Hour Records			
Name	Conc. Unit	Avg. Conc.	Uptime	Maximum		SAAQS Objective	Exceed Days	Maximum		SAAQS Objective	Exceed Hours
				Conc.	Time			Conc.	Time		
NO	ppb	0.3	99.6%	0.6	Jun-11	-	-	6.1	Jun-11 07:00	-	-
NO ₂	ppb	1.2	99.6%	2.4	Jun-23	106	0	7.8	Jun-23 04:00	159	0
NO _x	ppb	1.5	99.6%	3.0	Jun-23	-	-	8.7	Jun-11 07:00	-	-
O ₃	ppb	24	100.0%	38	Jun-13	-	-	49	Jun-23 18:00	82	0
PM _{2.5}	ug/m3	5	100.0%	11	Jun-2	28	0	85	Jun-02 21:00	-	-

SAAQS: Saskatchewan Ambient Air Quality Standards



Monthly Update

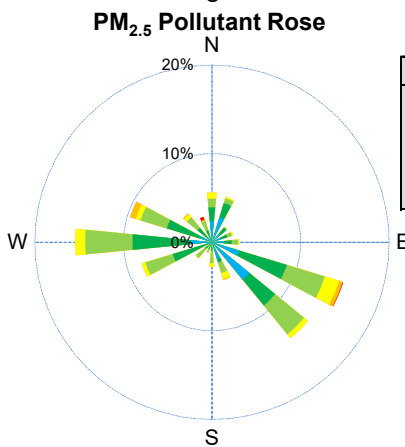
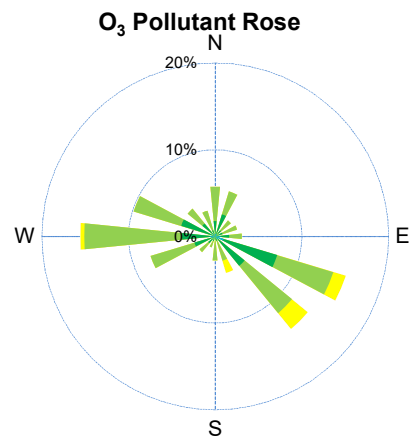
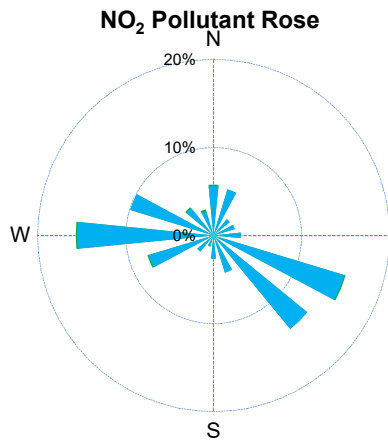
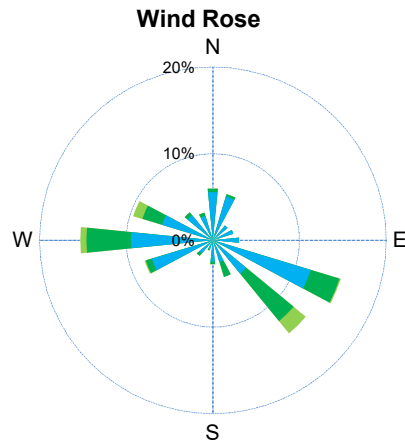
*All data has been slope, intercept, and baseline corrected. Data may change after validation process.

*All compliance parameters were within the Saskatchewan Ambient Air Quality Standards.

*All compliance parameters were greater than 90% operational.

* Three hours of data flagged as "analyzer failure" on June 26 for NO, NO₂, and NO_x due to instrument issues.

WYAMZ Meadow Lake City Station - June 2020 Summary Report



Parameters	Unit	Color Code for Wind Spd & Pollutant Conc. Class					
Wind Speed	m/s	$0.3 \leq WS < 1.4$	$1.4 \leq WS < 3.1$	$3.1 \leq WS < 7.8$	$7.8 \leq WS < 10.8$	$10.8 \leq WS < 13.6$	$WS \geq 13.6$
NO ₂	ppb	$0 \leq C < 5$	$5 \leq C < 15$	$15 \leq C < 30$	$30 \leq C < 100$	$100 \leq C < 212$	$C \geq 212$
O ₃	ppb	$0 \leq C < 10$	$10 \leq C < 20$	$20 \leq C < 40$	$40 \leq C < 60$	$60 \leq C < 82$	$C \geq 82$
PM _{2.5}	ug/m ³	$0 \leq C < 2$	$2 \leq C < 4$	$4 \leq C < 10$	$10 \leq C < 20$	$20 \leq C < 30$	$C \geq 30$