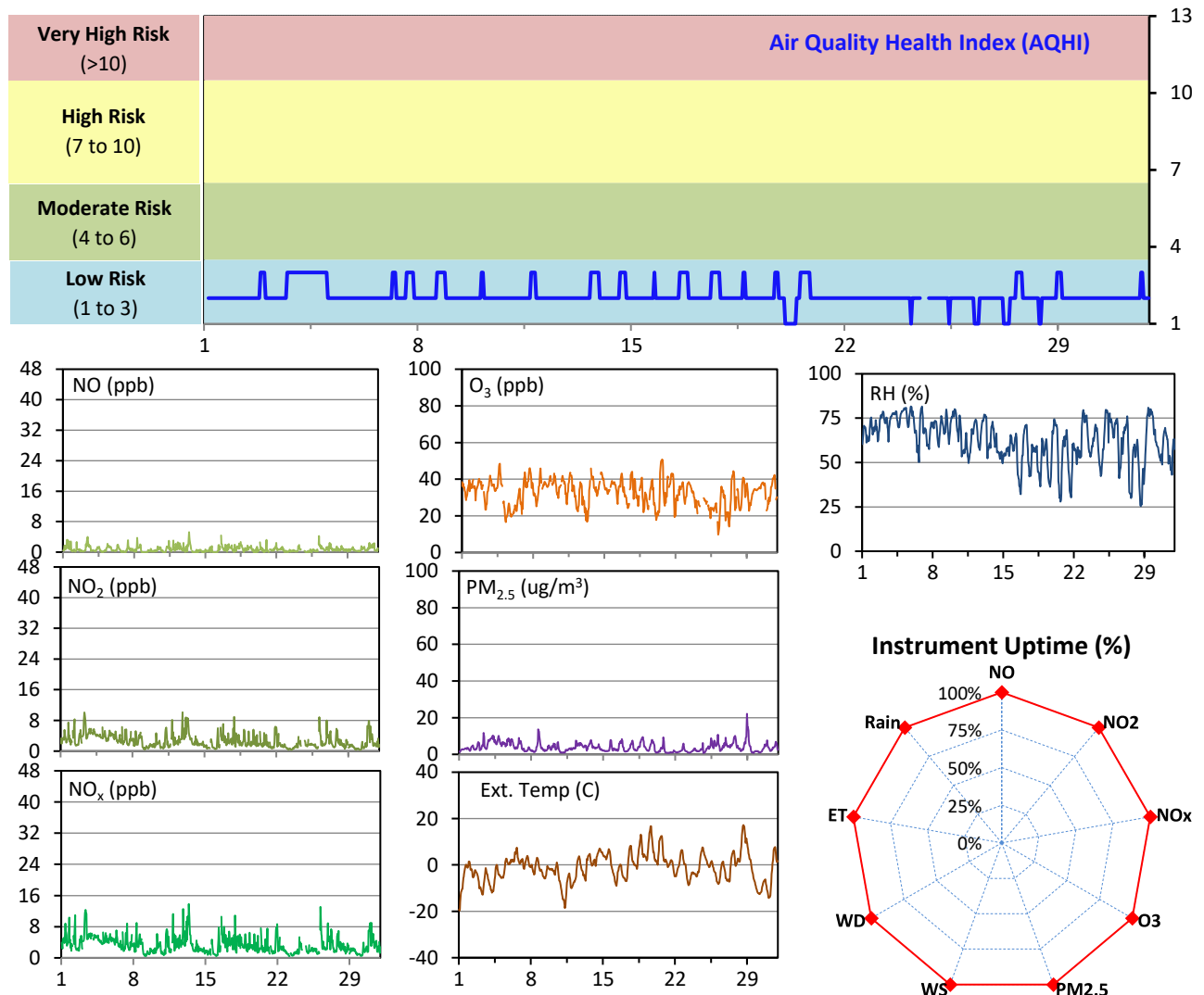


WYAMZ Clavet Station - March 2021 Summary Report

Pollutants		Month Records		24-Hour Records				1-Hour Records			
Name	Conc. Unit	Avg. Conc.	Uptime	Maximum		SAAQS Objective	Exceed Days	Maximum		SAAQS Objective	Exceed Hours
				Conc.	Time			Conc.	Time		
NO	ppb	0.7	100.0%	1.3	Mar-3	-	-	5.2	Mar-13 09:00	-	-
NO ₂	ppb	2.6	100.0%	5.2	Mar-3	106	0	10.1	Mar-12 20:00	159	0
NO _x	ppb	3.4	100.0%	6.5	Mar-3	-	-	13.8	Mar-13 09:00	-	-
O ₃	ppb	33	100.0%	40	Mar-7	-	-	51	Mar-20 16:00	82	0
PM _{2.5}	ug/m3	4	100.0%	8	Mar-4	28	0	22	Mar-28 23:00	-	-

SAAQS: Saskatchewan Ambient Air Quality Standards



Monthly Update

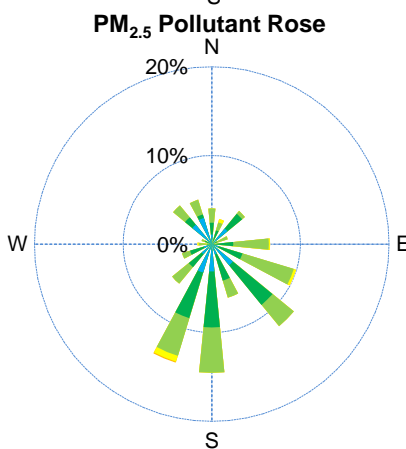
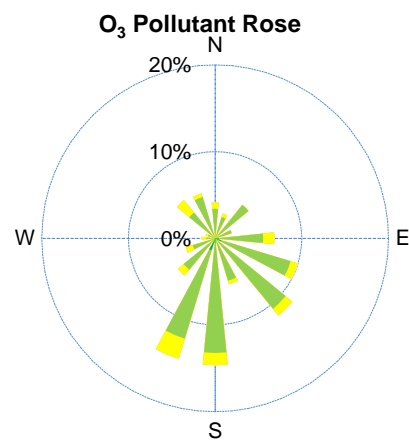
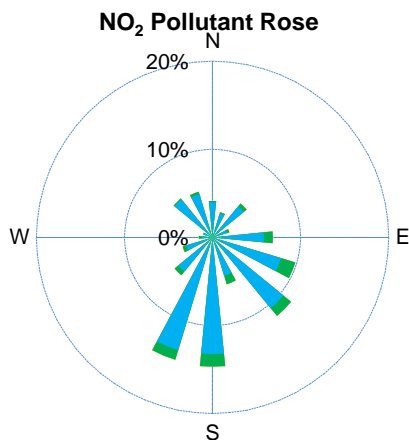
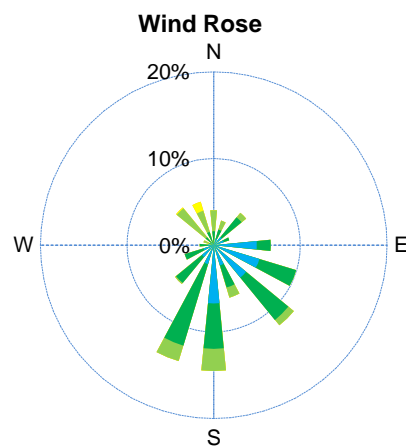
*All data has been slope, intercept, and baseline corrected. Data may change after validation process.

*All compliance parameters were within the Saskatchewan Ambient Air Quality Standards.

*All compliance parameters were greater than 90% operational for the month

* Station was calibrated on March 24.

WYAMZ Clavet Station - March 2021 Summary Report

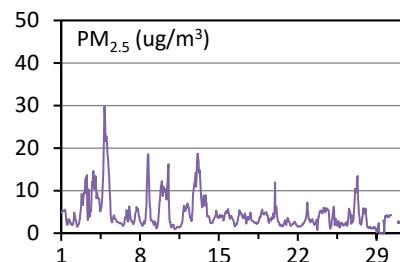
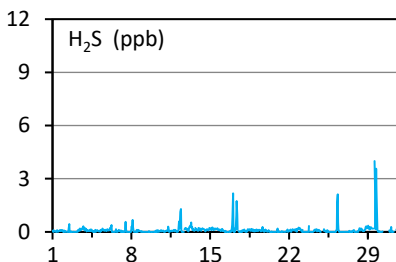
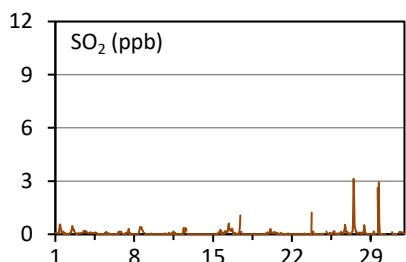


Parameters	Unit	Color Code for Wind Spd & Pollutant Conc. Class					
Wind Speed	m/s	$0.3 \leq WS < 1.4$	$1.4 \leq WS < 3.1$	$3.1 \leq WS < 7.8$	$7.8 \leq WS < 10.8$	$10.8 \leq WS < 13.6$	$WS \geq 13.6$
NO ₂	ppb	$0 \leq C < 5$	$5 \leq C < 15$	$15 \leq C < 30$	$30 \leq C < 100$	$100 \leq C < 212$	$C \geq 212$
O ₃	ppb	$0 \leq C < 10$	$10 \leq C < 20$	$20 \leq C < 40$	$40 \leq C < 60$	$60 \leq C < 82$	$C \geq 82$
PM _{2.5}	ug/m ³	$0 \leq C < 2$	$2 \leq C < 4$	$4 \leq C < 10$	$10 \leq C < 20$	$20 \leq C < 30$	$C \geq 30$

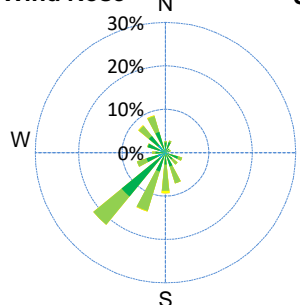
WYAMZ Kerrobert Station - March 2021 Summary Report

Pollutants		Month Records		24-Hour Records				1-Hour Records			
Name	Conc. Unit	Avg. Conc.	Uptime	Maximum		SAAQS Objective	Exceed Days	Maximum		SAAQS Objective	Exceed Hours
				Conc.	Time			Conc.	Time		
SO ₂	ppb	0.1	97.3%	0.4	Mar-27	48	0	3.1	Mar-27 11:00	172	0
H ₂ S	ppb	0.1	97.3%	0.7	Mar-29	3.6	0	4.0	Mar-29 14:00	11	0
PM _{2.5}	ug/m3	5	97.4%	13	Mar-4	28	0	30	Mar-04 20:00	-	-

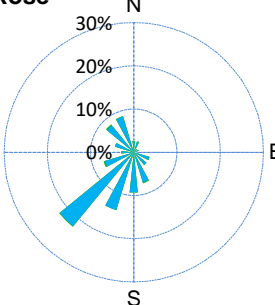
SAAQS: Saskatchewan Ambient Air Quality Standards



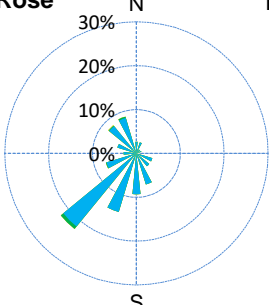
Wind Rose



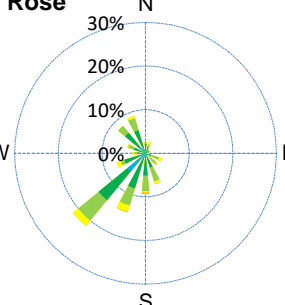
SO₂ Rose



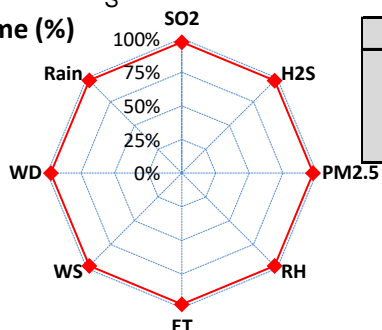
H₂S Rose



PM_{2.5} Rose



Uptime (%)



Parameters	Unit	Color Code for Wind Spd & Pollutant Conc. Class					
Wind Speed	m/s	0.3 ≤ WS < 1.4	1.4 ≤ WS < 3.1	3.1 ≤ WS < 7.8	7.8 ≤ WS < 10.8	10.8 ≤ WS < 13.6	WS ≥ 13.6
SO ₂	ppb	0 ≤ C < 1	1 ≤ C < 5	5 ≤ C < 10	10 ≤ C < 57	57 ≤ C < 172	C ≥ 172
H ₂ S	ppb	0 ≤ C < 1	1 ≤ C < 3.6	3.6 ≤ C < 5	5 ≤ C < 8	8 ≤ C < 10.8	C ≥ 10.8
PM _{2.5}	ug/m ³	0 ≤ C < 2	2 ≤ C < 4	4 ≤ C < 10	10 ≤ C < 20	20 ≤ C < 30	C ≥ 30

Monthly Update

*All data has been slope, intercept, and baseline corrected. Data may change after validation process.

*All compliance parameters were within the Saskatchewan Ambient Air Quality Standards.

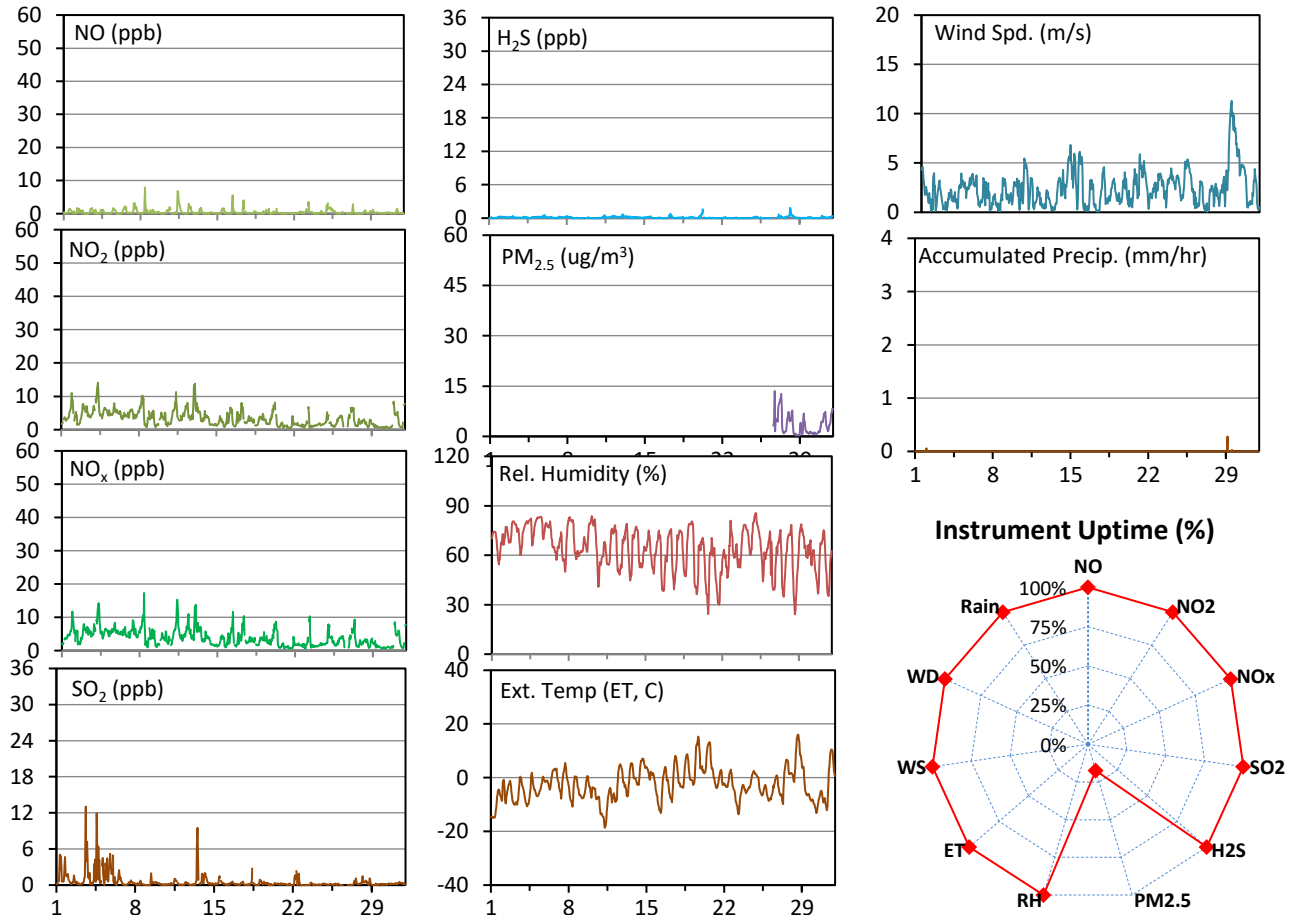
*All compliance parameters were greater than 90% operational.

* 19 hour of data flagged as "power failure" for all parameters due to power issues on site.

WYAMZ Maidstone Station - March 2021 Summary Report

Pollutants		Month Records		24-Hour Records				1-Hour Records			
Name	Conc. Unit	Avg. Conc.	Uptime	Maximum		SAAQS Objective	Exceed Days	Maximum		SAAQS Objective	Exceed Hours
				Conc.	Time			Conc.	Time		
NO	ppb	0.5	100.0%	1.4	Mar-11	-	-	7.9	Mar-08 09:00	-	-
NO ₂	ppb	3.4	100.0%	7.1	Mar-4	106	0	14.1	Mar-04 07:00	159	0
NO _x	ppb	3.9	100.0%	7.4	Mar-4	-	-	17.3	Mar-08 09:00	-	-
SO ₂	ppb	0.6	100.0%	2.4	Mar-5	48	0	13.0	Mar-03 14:00	172	0
H ₂ S	ppb	0.1	100.0%	0.4	Mar-28	3.6	0	1.8	Mar-28 03:00	11	0
PM _{2.5}	ug/m3	-	17.5%	-	-	28	-	-	Mar-26 17:00	-	-

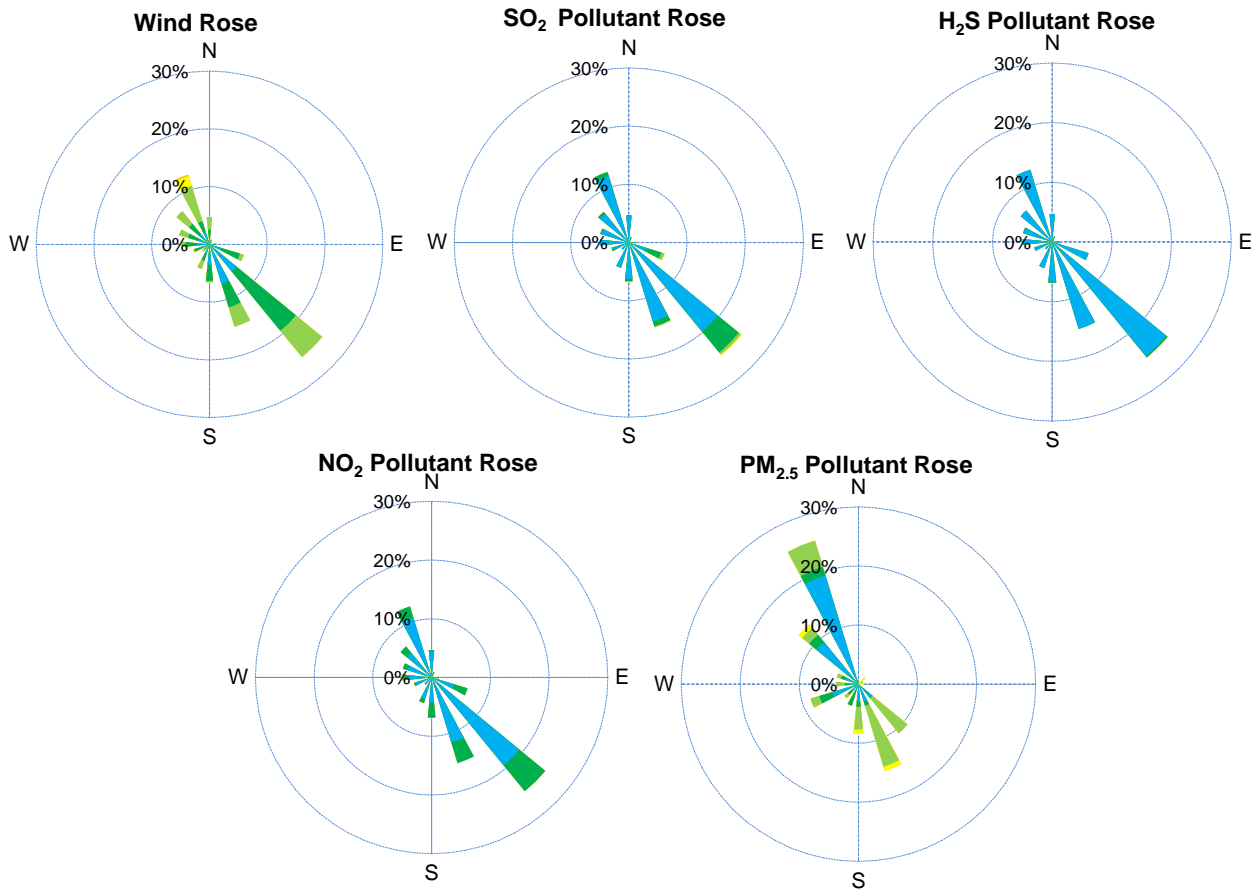
SAAQS: Saskatchewan Ambient Air Quality Standards



Monthly Update

- * All data has been slope, intercept, and baseline corrected. Data may change after validation process.
- * All compliance parameters were within the Saskatchewan Ambient Air Quality Standards.
- * All compliance parameters were greater than 90% operational with the exception of PM_{2.5}. PM_{2.5} was re-installed on March 26.
- * Station was calibrated on March 26.

WYAMZ Maidstone Station - March 2021 Summary Report

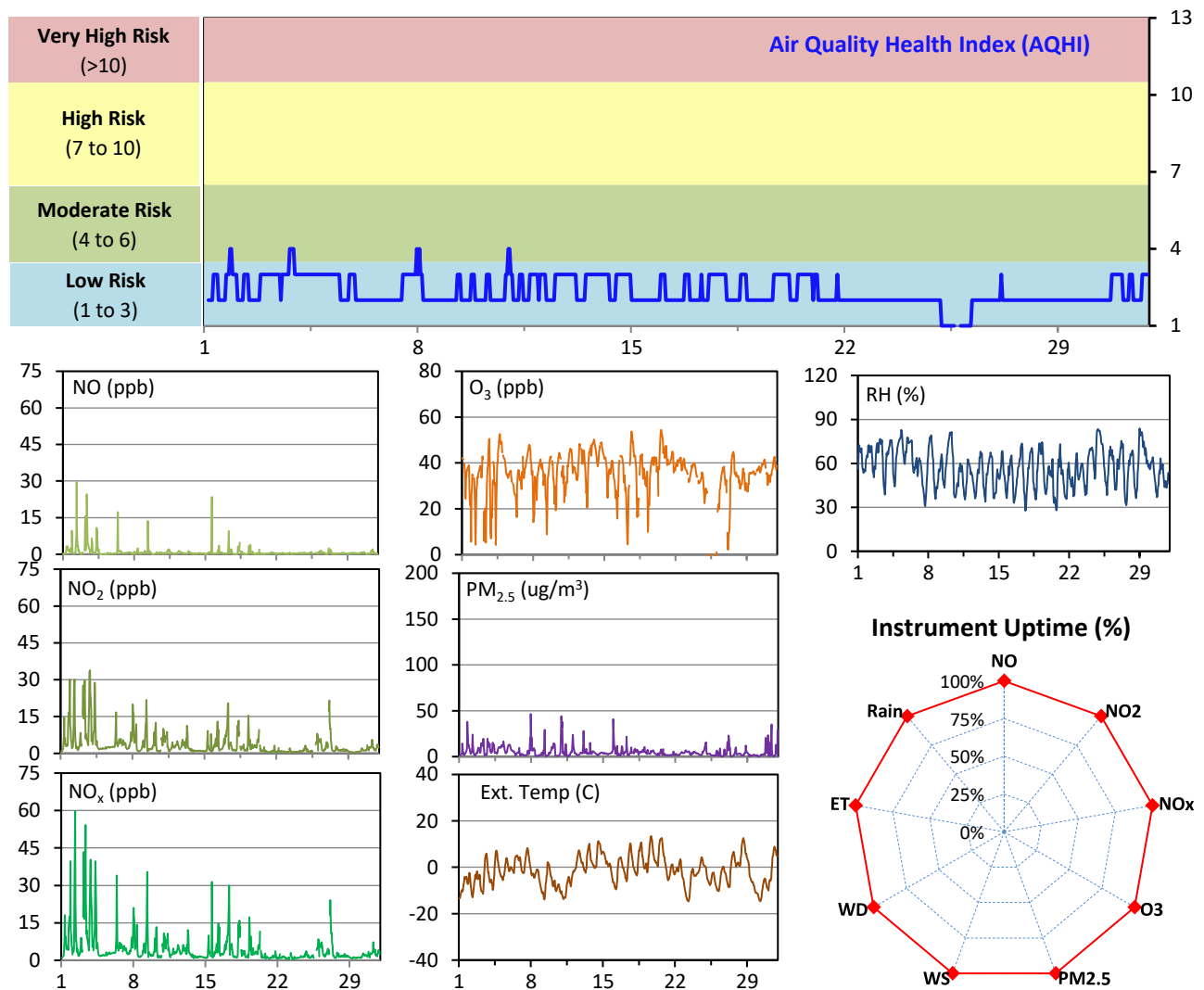


Parameters	Unit	Color Code for Wind Spd & Pollutant Conc. Class						
Wind Speed	m/s	$0.3 \leq WS < 1.4$	$1.4 \leq WS < 3.1$	$3.1 \leq WS < 7.8$	$7.8 \leq WS < 10.8$	$10.8 \leq WS < 13.6$	$WS \geq 13.6$	
SO ₂	ppb	$0 \leq C < 1$	$1 \leq C < 5$	$5 \leq C < 10$	$10 \leq C < 57$	$57 \leq C < 172$	$C \geq 172$	
NO ₂	ppb	$0 \leq C < 5$	$5 \leq C < 15$	$15 \leq C < 30$	$30 \leq C < 100$	$100 \leq C < 212$	$C \geq 212$	
H ₂ S	ppb	$0 \leq C < 1$	$1 \leq C < 3.6$	$3.6 \leq C < 5$	$5 \leq C < 8$	$8 \leq C < 10.8$	$C \geq 10.8$	

WYAMZ Meadow Lake City Station - March 2021 Summary Report

Pollutants		Month Records		24-Hour Records				1-Hour Records			
Name	Conc. Unit	Avg. Conc.	Uptime	Maximum		SAAQS Objective	Exceed Days	Maximum		SAAQS Objective	Exceed Hours
				Conc.	Time			Conc.	Time		
NO	ppb	0.9	100.0%	4.3	Mar-3	-	-	29.7	Mar-02 08:00	-	-
NO ₂	ppb	3.6	100.0%	15.0	Mar-3	106	0	33.9	Mar-03 20:00	159	0
NO _x	ppb	4.5	100.0%	19.2	Mar-3	-	-	59.7	Mar-02 08:00	-	-
O ₃	ppb	35	100.0%	45	Mar-14	-	-	54	Mar-20 14:00	82	0
PM _{2.5}	ug/m3	5	100.0%	10	Mar-5	28	0	46	Mar-07 23:00	-	-

SAAQS: Saskatchewan Ambient Air Quality Standards



Monthly Update

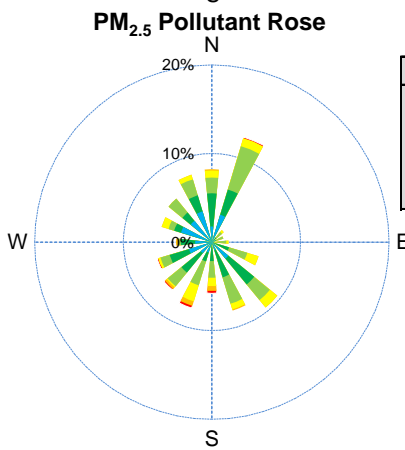
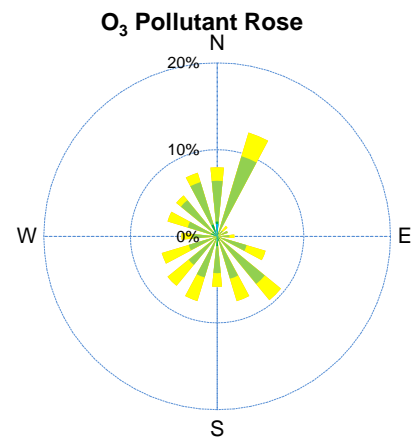
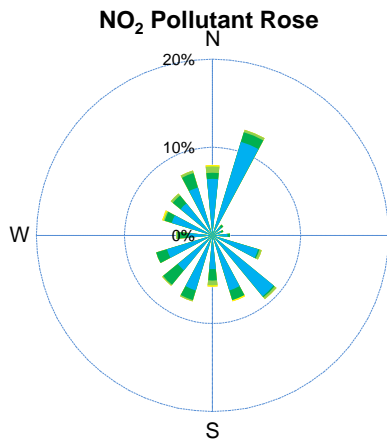
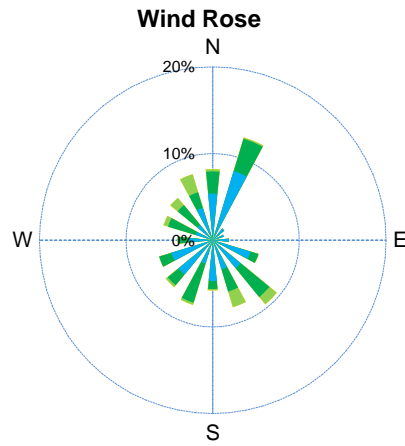
*All data has been slope, intercept, and baseline corrected. Data may change after validation process.

*All compliance parameters were within the Saskatchewan Ambient Air Quality Standards.

*All compliance parameters were greater than 90% operational.

* Station was calibrated on March 25.

WYAMZ Meadow Lake City Station - March 2021 Summary Report



Parameters	Unit	Color Code for Wind Spd & Pollutant Conc. Class					
Wind Speed	m/s	$0.3 \leq WS < 1.4$	$1.4 \leq WS < 3.1$	$3.1 \leq WS < 7.8$	$7.8 \leq WS < 10.8$	$10.8 \leq WS < 13.6$	$WS \geq 13.6$
NO ₂	ppb	$0 \leq C < 5$	$5 \leq C < 15$	$15 \leq C < 30$	$30 \leq C < 100$	$100 \leq C < 212$	$C \geq 212$
O ₃	ppb	$0 \leq C < 10$	$10 \leq C < 20$	$20 \leq C < 40$	$40 \leq C < 60$	$60 \leq C < 82$	$C \geq 82$
PM _{2.5}	ug/m ³	$0 \leq C < 2$	$2 \leq C < 4$	$4 \leq C < 10$	$10 \leq C < 20$	$20 \leq C < 30$	$C \geq 30$