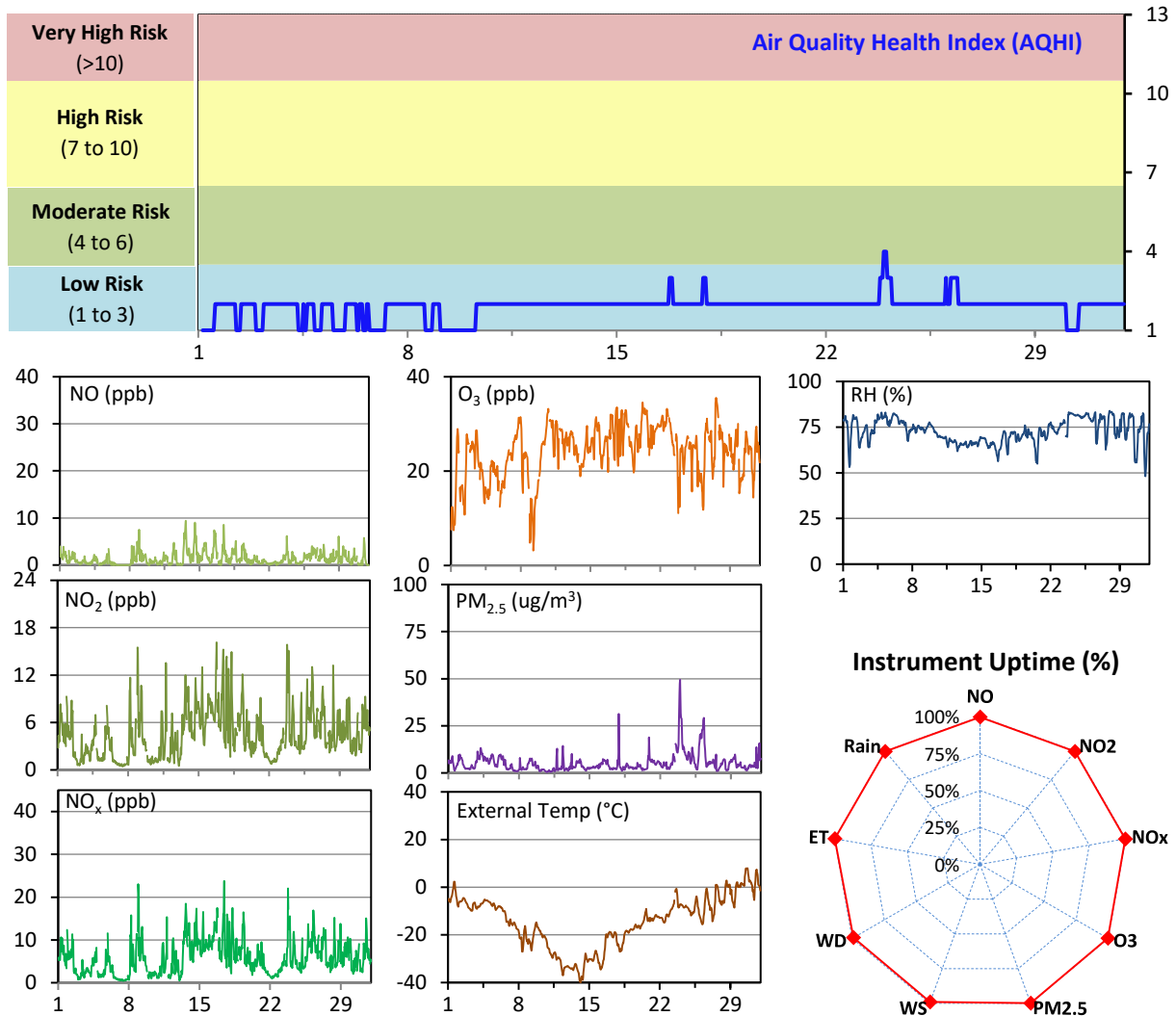


# WYAMZ Clavet Station - January 2024 Summary Report

Pollutants		Month Records		24-Hour Records				1-Hour Records			
Name	Conc. Unit	Avg. Conc.	Uptime	Maximum		SAAQS Objective	Exceed Days	Maximum		SAAQS Objective	Exceed Hours
				Conc.	Time			Conc.	Time		
NO	ppb	1.4	99.7%	3.0	Jan-13	-	-	9.4	Jan-13 15:00	-	-
NO <sub>2</sub>	ppb	4.5	99.7%	8.6	Jan-16	106	0	16.1	Jan-16 18:00	159	0
NO <sub>x</sub>	ppb	5.9	99.7%	11.2	Jan-16	-	-	23.8	Jan-17 10:00	-	-
O <sub>3</sub>	ppb	24.2	99.7%	30.7	Jan-22	-	-	35.5	Jan-27 14:00	82	0
PM <sub>2.5</sub>	ug/m3	5.2	99.9%	14.8	Jan-23	28	0	49.4	Jan-23 23:00	-	-

SAAQS: Saskatchewan Ambient Air Quality Standards

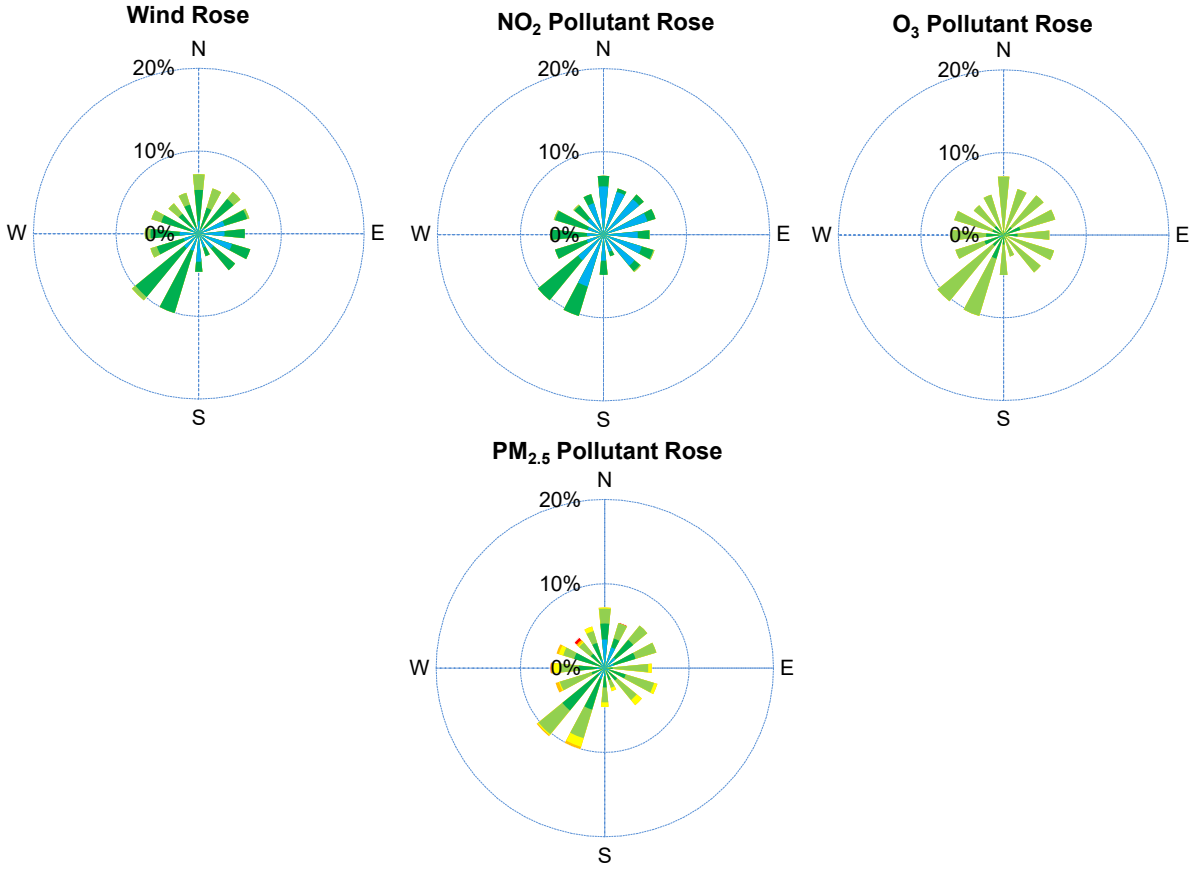


## Monthly Update

- \*All data has been slope, intercept, and baseline corrected. Data may change after validation process.
- \*All compliance parameters were within the Saskatchewan Ambient Air Quality Standards.
- \*All compliance parameters were more than 90% operational for the month.
- \*1-2 hours of data flagged as "power failure" for the whole station due to a power outage on January 23.
- \*6 hours of data flagged as "analyzer failure" for WS and WD due to flatlined data on January 25.



# WYAMZ Clavet Station - January 2024 Summary Report

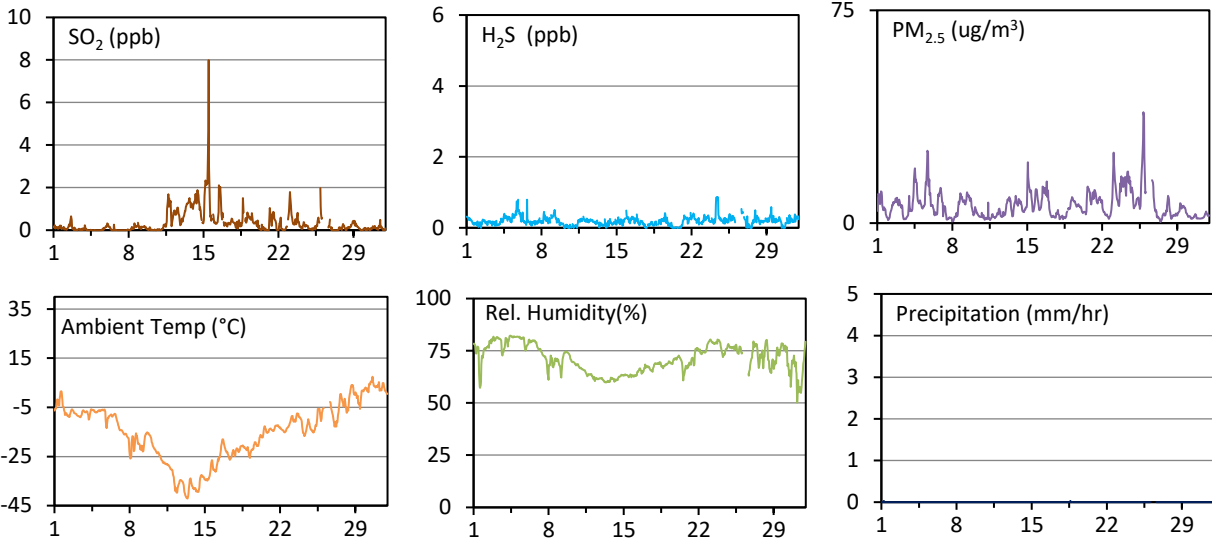


Parameters	Unit	Color Code for Wind Spd & Pollutant Conc. Class						
Wind Speed	kph	$0.3 \leq WS < 1.4$	$1.4 \leq WS < 3.1$	$3.1 \leq WS < 7.8$	$7.8 \leq WS < 10.8$	$10.8 \leq WS < 13.6$	$WS \geq 13.6$	
NO <sub>2</sub>	ppb	$0 \leq C < 5$	$5 \leq C < 15$	$15 \leq C < 30$	$30 \leq C < 100$	$100 \leq C < 212$	$C \geq 212$	
O <sub>3</sub>	ppb	$0 \leq C < 10$	$10 \leq C < 20$	$20 \leq C < 40$	$40 \leq C < 60$	$60 \leq C < 82$	$C \geq 82$	
PM <sub>2.5</sub>	ug/m <sup>3</sup>	$0 \leq C < 2$	$2 \leq C < 4$	$4 \leq C < 10$	$10 \leq C < 20$	$20 \leq C < 30$	$C \geq 30$	

# WYAMZ Kerrobert Station - January 2024 Summary Report

Pollutants		Month Records		24-Hour Records				1-Hour Records			
Name	Conc. Unit	Avg. Conc.	Uptime	Maximum		SAAQS Objective	Exceed Days	Maximum		SAAQS Objective	Exceed Hours
				Conc.	Time			Conc.	Time		
SO <sub>2</sub>	ppb	-	98.0%	1.8	Jan-15	48	0	8.0	Jan-15 11:00	172	0
H <sub>2</sub> S	ppb	-	98.0%	0.4	Jan-5	3.6	0	0.9	Jan-24 08:00	11	0
PM <sub>2.5</sub>	ug/m3	6.3	98.1%	13.9	Jan-25	28	0	39.1	Jan-25 20:00	-	-

SAAQS: Saskatchewan Ambient Air Quality Standards

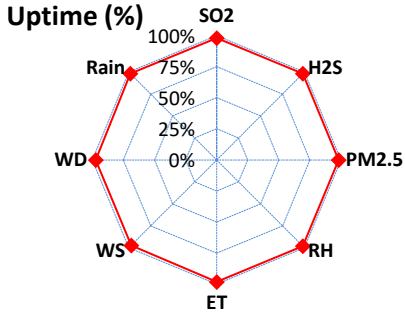
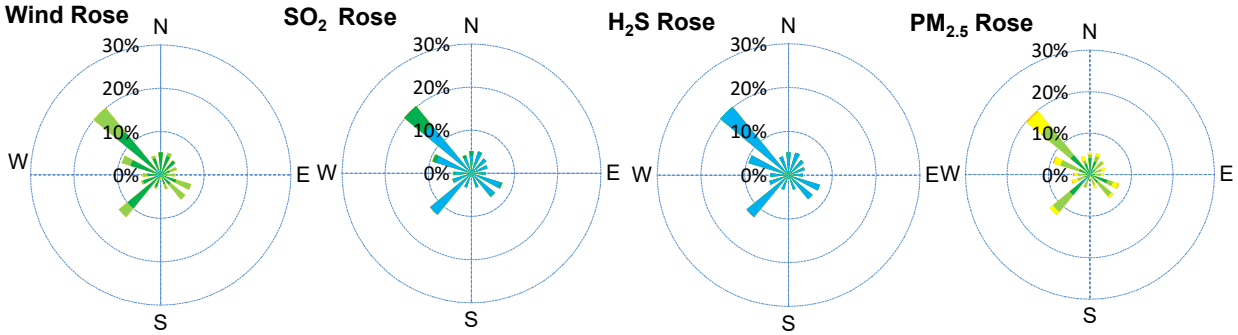


## Monthly Update

- \*All data has been slope, intercept, and baseline corrected. Data may change after validation process.
- \*All compliance parameters were within the Saskatchewan Ambient Air Quality Standards.
- \*All compliance parameters were greater than 90% operational for the month.
- \*14 hours of data for the whole station flagged as "power failure" due to intermittent power failures at the station.



# WYAMZ Kerrobert Station - January 2024 Summary Report



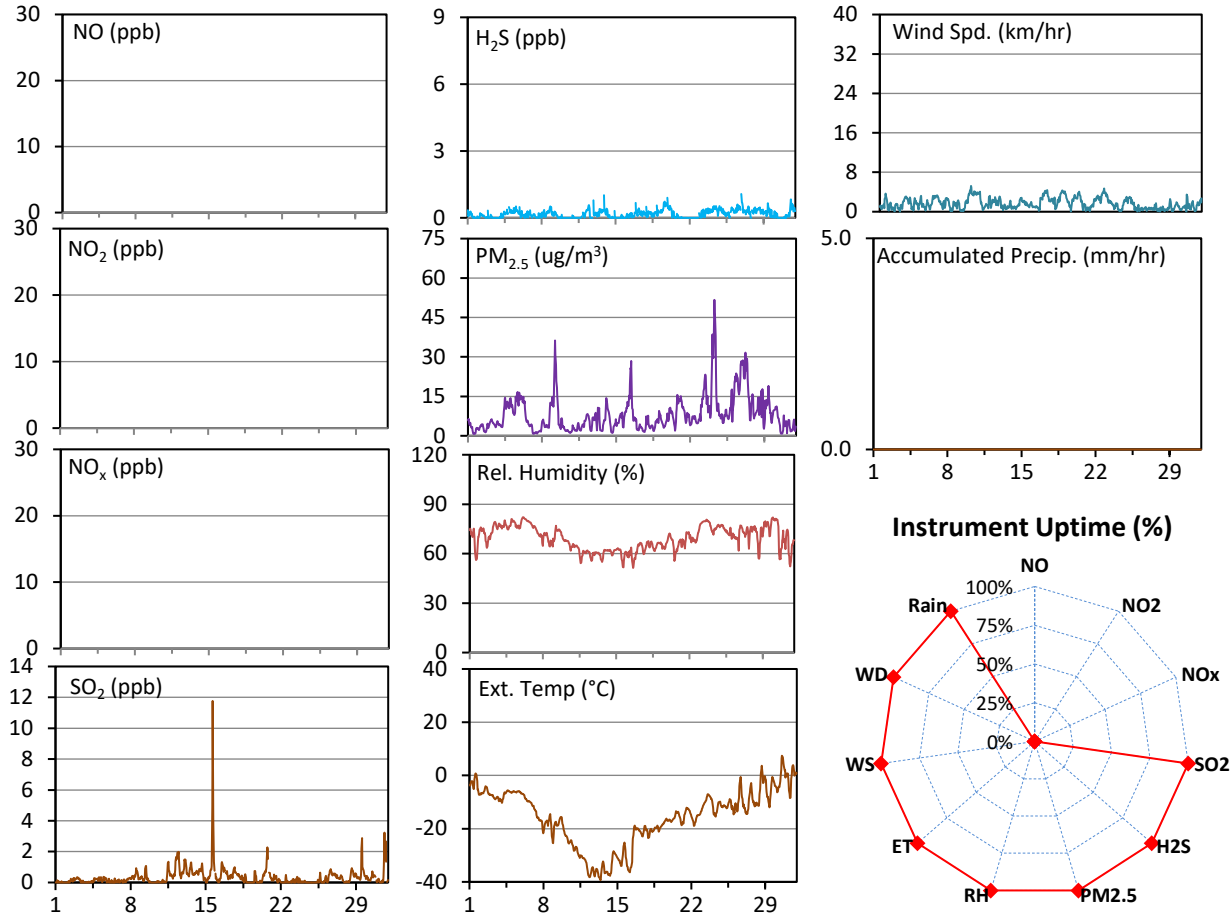
Parameters	Unit	Color Code for Wind Spd & Pollutant Conc. Class					
Wind Speed	kph	0.3 ≤ WS < 1.4	1.4 ≤ WS < 3.1	3.1 ≤ WS < 7.8	7.8 ≤ WS < 10.8	10.8 ≤ WS < 13.6	WS ≥ 13.6
SO <sub>2</sub>	ppb	0 ≤ C < 1	1 ≤ C < 5	5 ≤ C < 10	10 ≤ C < 57	57 ≤ C < 172	C ≥ 172
H <sub>2</sub> S	ppb	0 ≤ C < 1	1 ≤ C < 3.6	3.6 ≤ C < 5	5 ≤ C < 8	8 ≤ C < 10.8	C ≥ 10.8
PM <sub>2.5</sub>	ug/m <sup>3</sup>	0 ≤ C < 2	2 ≤ C < 4	4 ≤ C < 10	10 ≤ C < 20	20 ≤ C < 30	C ≥ 30



# WYAMZ Maidstone Station - January 2024 Summary Report

Pollutants		Month Records		24-Hour Records				1-Hour Records			
Name	Conc. Unit	Avg. Conc.	Uptime	Maximum		SAAQS Objective	Exceed Days	Maximum		SAAQS Objective	Exceed Hours
				Conc.	Time			Conc.	Time		
NO	ppb	-	0.0%	< 0.1	-	-	-	< 0.1	-	-	-
NO <sub>2</sub>	ppb	-	0.0%	< 0.1	-	106	0	< 0.1	-	159	0
NO <sub>x</sub>	ppb	-	0.0%	< 0.1	-	-	-	< 0.1	-	-	-
SO <sub>2</sub>	ppb	0.4	100.0%	1.4	Jan-15	48	0	11.8	Jan-15 15:00	172	0
H <sub>2</sub> S	ppb	0.2	100.0%	0.4	Jan-19	3.6	0	1.1	Jan-26 21:00	11	0
PM <sub>2.5</sub>	ug/m3	8.1	100.0%	21.3	Jan-24	28	0	51.7	Jan-24 06:00	-	-

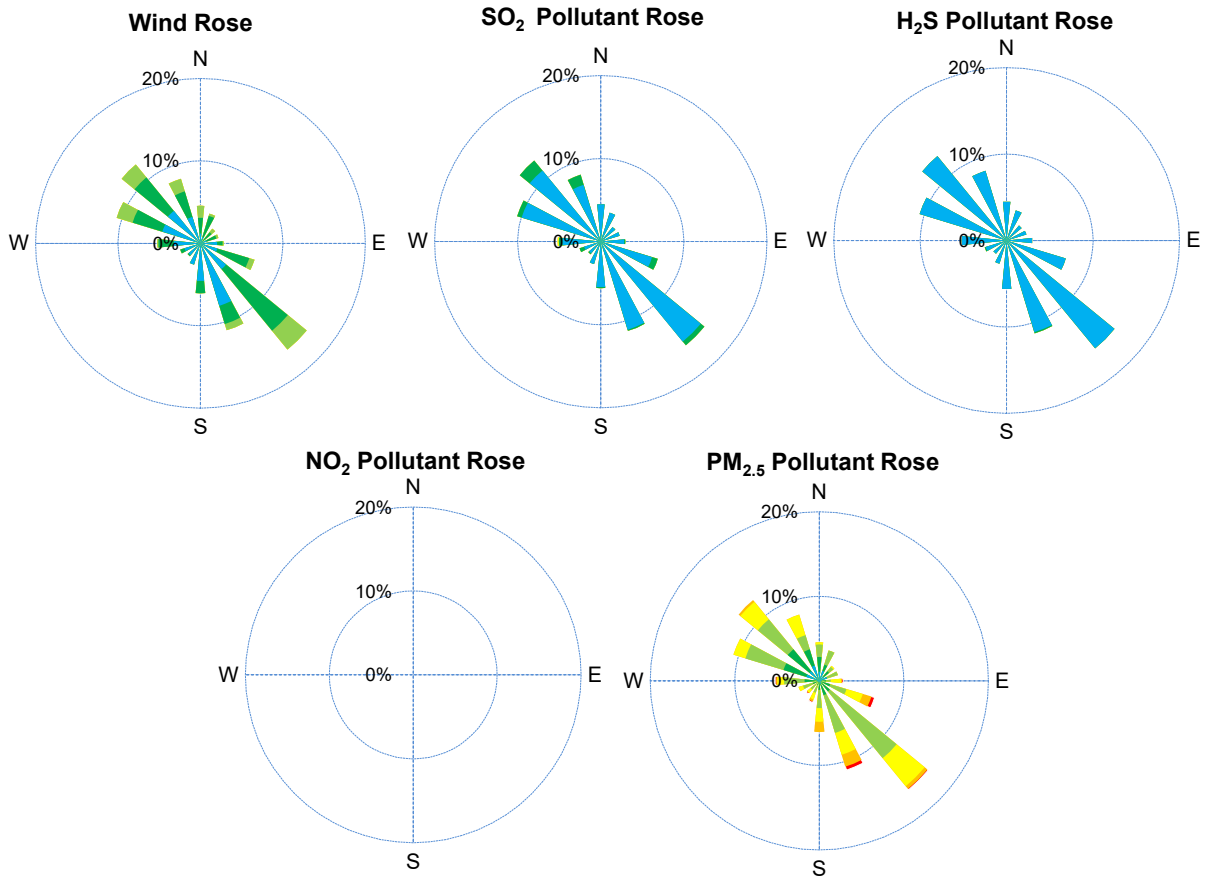
SAAQS: Saskatchewan Ambient Air Quality Standards



## Monthly Update

- \*All data has been slope, intercept, and baseline corrected. Data may change after validation process.
- \*All compliance parameters were within the Saskatchewan Ambient Air Quality Standards.
- \*All compliance parameters were greater than 90% operational except NO/NO<sub>x</sub>/NO<sub>2</sub>.
- \*All NO/NO<sub>x</sub>/NO<sub>2</sub> data was flagged as "analyzer failure" due to the removal of the analyzer from service on August 24th, 2023.

# WYAMZ Maidstone Station - January 2024 Summary Report

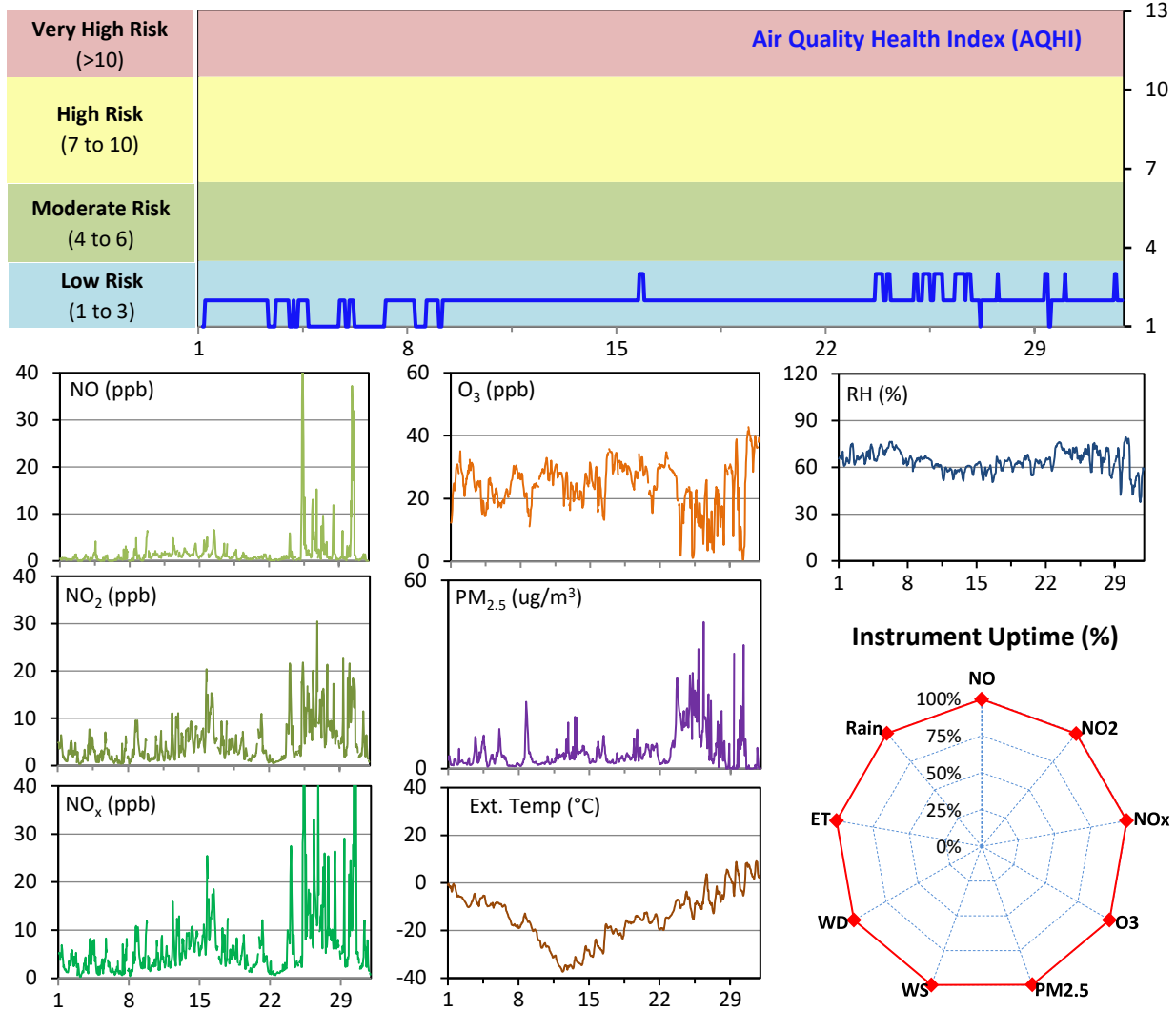


Parameters	Unit	Color Code for Wind Spd & Pollutant Conc. Class						
Wind Speed	kph	0.3 ≤ WS < 1.4	1.4 ≤ WS < 3.1	3.1 ≤ WS < 7.8	7.8 ≤ WS < 10.8	10.8 ≤ WS < 13.6	WS ≥ 13.6	
SO <sub>2</sub>	ppb	0 ≤ C < 1	1 ≤ C < 5	5 ≤ C < 10	10 ≤ C < 57	57 ≤ C < 172	C ≥ 172	
NO <sub>2</sub>	ppb	0 ≤ C < 5	5 ≤ C < 15	15 ≤ C < 30	30 ≤ C < 100	100 ≤ C < 212	C ≥ 212	
H <sub>2</sub> S	ppb	0 ≤ C < 1	1 ≤ C < 3.6	3.6 ≤ C < 5	5 ≤ C < 8	8 ≤ C < 10.8	C ≥ 10.8	
PM <sub>2.5</sub>	ug/m <sup>3</sup>	0 ≤ C < 2	2 ≤ C < 4	4 ≤ C < 10	10 ≤ C < 20	20 ≤ C < 30	C ≥ 30	

# WYAMZ Meadow Lake City Station - January 2024 Summary Report

Pollutants		Month Records		24-Hour Records				1-Hour Records			
Name	Conc. Unit	Avg. Conc.	Uptime	Maximum		SAAQS Objective	Exceed Days	Maximum		SAAQS Objective	Exceed Hours
				Conc.	Time			Conc.	Time		
NO	ppb	1.7	99.6%	9.2	Jan-25	-	-	42.2	Jan-25 08:00	-	-
NO <sub>2</sub>	ppb	4.9	99.6%	11.3	Jan-26	106	0	30.5	Jan-26 18:00	159	0
NO <sub>x</sub>	ppb	6.6	99.6%	20.2	Jan-25	-	-	64.0	Jan-25 08:00	-	-
O <sub>3</sub>	ppb	24.0	99.7%	37.0	Jan-31	-	-	42.8	Jan-30 21:00	82	0
PM <sub>2.5</sub>	ug/m3	5.5	99.7%	20.5	Jan-25	28	0	46.7	Jan-26 07:00	-	-

SAAQS: Saskatchewan Ambient Air Quality Standards

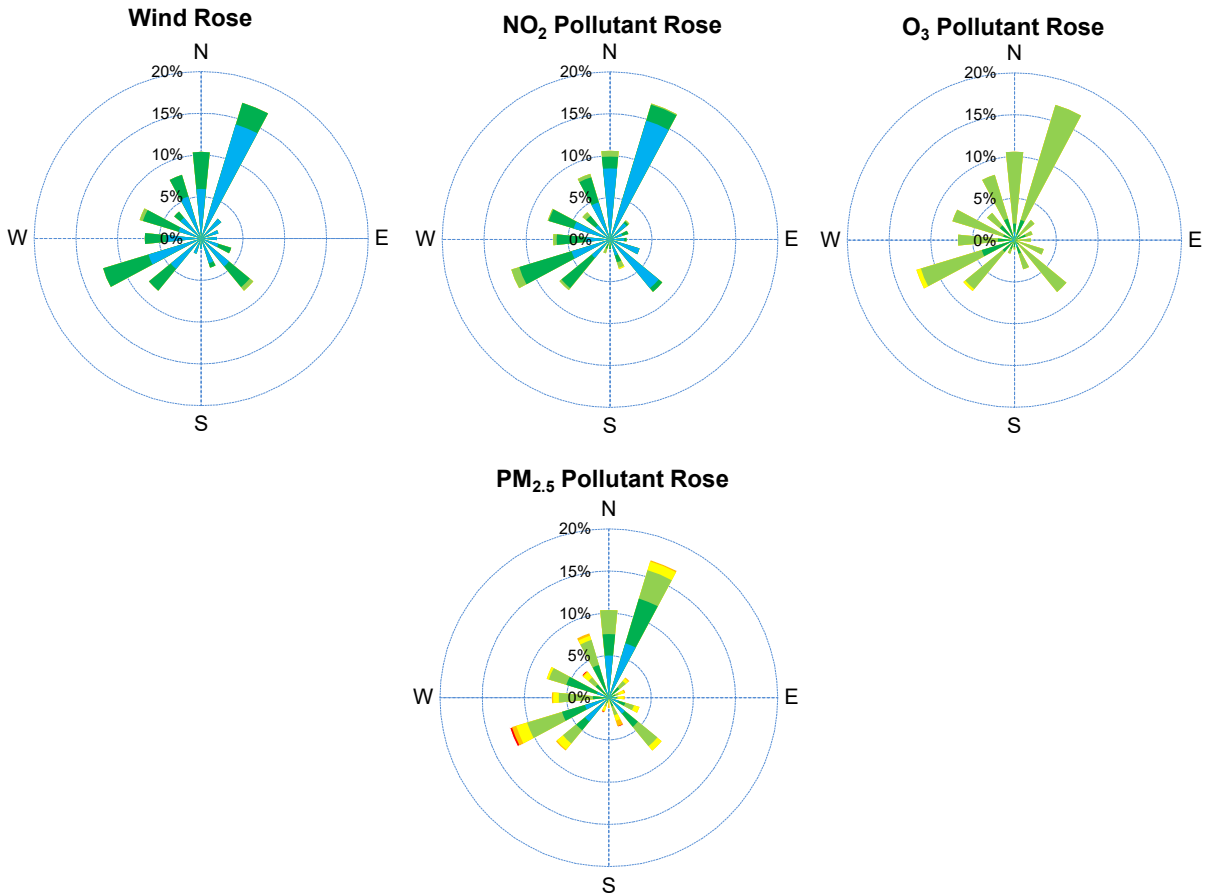


## Monthly Update

- \*All data has been slope, intercept, and baseline corrected. Data may change after validation process.
- \*All compliance parameters were within the Saskatchewan Ambient Air Quality Standards.
- \*All compliance parameters were greater than 90% operational.
- \*1-3 hours of data was flagged as "power failure" for the whole station due to intermittent power issues during the month.
- \*1 hour of data was flagged as "analyzer failure" for PM<sub>2.5</sub> due to an unusual peak in data.



# WYAMZ Meadow Lake City Station - January 2024 Summary Report



Parameters	Unit	Color Code for Wind Spd & Pollutant Conc. Class					
Wind Speed	kph	$0.3 \leq WS < 1.4$	$1.4 \leq WS < 3.1$	$3.1 \leq WS < 7.8$	$7.8 \leq WS < 10.8$	$10.8 \leq WS < 13.6$	$WS \geq 13.6$
NO <sub>2</sub>	ppb	$0 \leq C < 5$	$5 \leq C < 15$	$15 \leq C < 30$	$30 \leq C < 100$	$100 \leq C < 212$	$C \geq 212$
O <sub>3</sub>	ppb	$0 \leq C < 10$	$10 \leq C < 20$	$20 \leq C < 40$	$40 \leq C < 60$	$60 \leq C < 82$	$C \geq 82$
PM <sub>2.5</sub>	ug/m <sup>3</sup>	$0 \leq C < 2$	$2 \leq C < 4$	$4 \leq C < 10$	$10 \leq C < 20$	$20 \leq C < 30$	$C \geq 30$

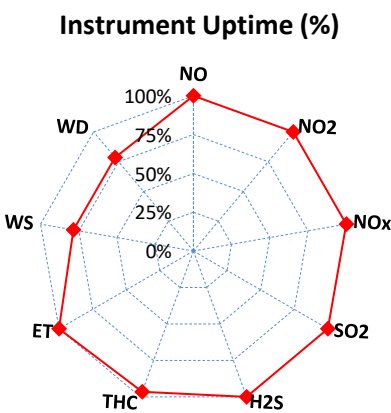
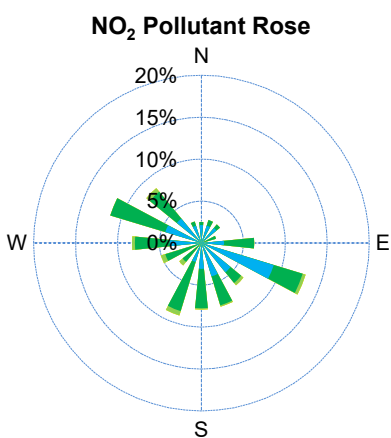
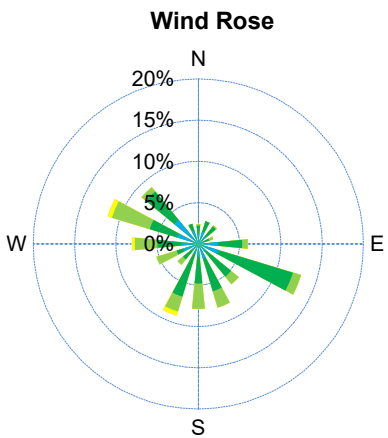
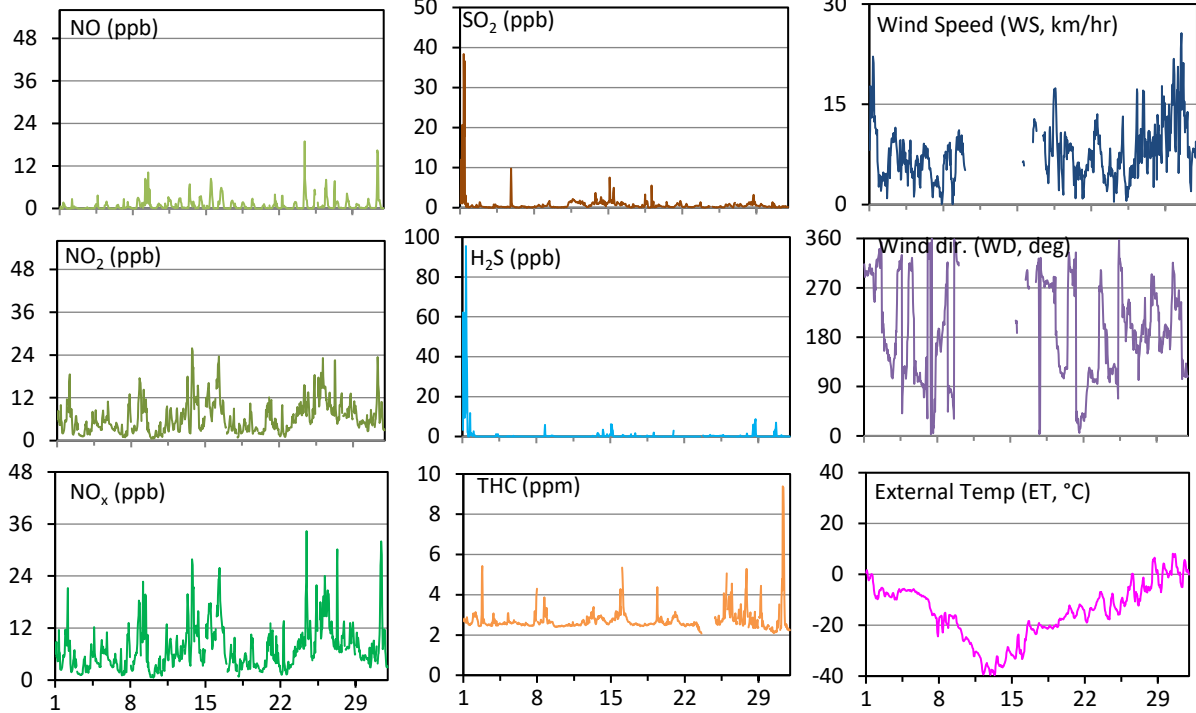




# Cenovus Energy Inc East Station - January 2024 Summary Report

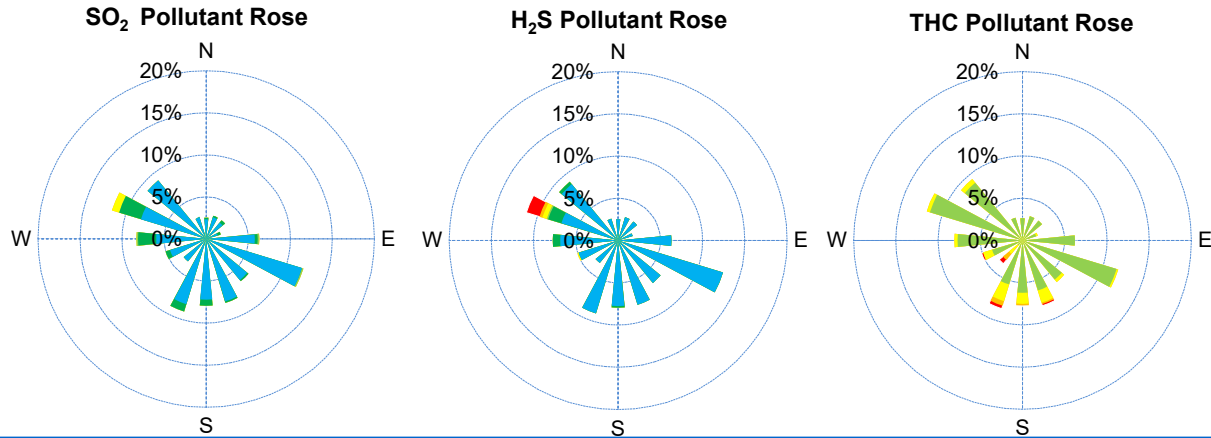
Pollutants		Month Records		24-Hour Records				1-Hour Records			
Name	Conc. Unit	Avg. Conc.	Uptime	Maximum		SAAQS Standards	Exceed Days	Maximum		SAAQS Standards	Exceed Hours
				Conc.	Time			Conc.	Time		
NO	ppb	0.9	100.0%	2.7	Jan-31	-	-	18.9	Jan-24 11:00	-	-
NO <sub>2</sub>	ppb	6.3	100.0%	12.6	Jan-26	106	0	25.9	Jan-13 19:00	159	0
NO <sub>x</sub>	ppb	7.2	100.0%	14.3	Jan-26	-	-	34.4	Jan-24 11:00	-	-
SO <sub>2</sub>	ppb	0.8	100.0%	6.1	Jan-1	48	0	38.4	Jan-01 09:00	172	0
H <sub>2</sub> S	ppb	0.7	100.0%	15.8	Jan-1	3.6	1	95.5	Jan-01 09:00	11.0	9
THC	ppm	2.7	96.5%	3.6	Jan-31	-	-	9.4	Jan-31 08:00	-	-

SAAQS: Saskatchewan Ambient Air Quality Standards



Parameters	Unit	Color Code for Wind Spd & Pollutant Conc. Class						
Wind Speed	km/hr	1 ≤ WS < 5	5 ≤ WS < 10	10 ≤ WS < 20	20 ≤ WS < 30	30 ≤ WS < 40	WS ≥ 40	
SO <sub>2</sub>	ppb	0 ≤ C < 1	1 ≤ C < 5	5 ≤ C < 10	10 ≤ C < 57	57 ≤ C < 172	C ≥ 172	
NO <sub>2</sub>	ppb	0 ≤ C < 5	5 ≤ C < 15	15 ≤ C < 30	30 ≤ C < 100	100 ≤ C < 212	C ≥ 212	
H <sub>2</sub> S	ppb	0 ≤ C < 1	1 ≤ C < 3.6	3.6 ≤ C < 5	5 ≤ C < 8	8 ≤ C < 11	C ≥ 11	
THC	ppm	0 ≤ C < 1	1 ≤ C < 2	2 ≤ C < 3	3 ≤ C < 4	4 ≤ C < 5	C ≥ 5	

# Cenovus Energy Inc East Station - January 2024 Summary Report



## Monthly Update

\*Air monitoring data has been validated. Data may change after validation process.  
 \*All compliance parameters were within the Saskatchewan Ambient Air Quality Standards, except for nine 1-hour H<sub>2</sub>S exceedances and one 24-hour H<sub>2</sub>S exceedance.  
 \*All compliance parameters were >90% operational.  
 \*25 hours of data was flagged as "maintenance" for THC due to an analog out issue on January 23.  
 \*160 hours of data was flagged as "frozen" for WS and WD due to cold temperatures freezing the wind analyzer head.  
 \*Station was calibrated on January 23, 24 and 25, 2024.

## Exceedance Summary

1-hour Exceedance Information			Summary of Other Parameters During Exceedance						
Pollutant	Conc. ppb	Exceedance Time mmm-dd hh:mm	WS km/hr	WD deg	ET C	SO <sub>2</sub> ppb	H <sub>2</sub> S ppb	NO <sub>2</sub> ppb	THC ppm
H <sub>2</sub> S	62.0	Jan-01 03:00	17.7	290	1.7	12.0	62.3	8.4	2.8
H <sub>2</sub> S	14.0	Jan-01 04:00	17.6	297	0.4	1.9	14.2	5.4	2.7
H <sub>2</sub> S	25.0	Jan-01 05:00	15.0	299	-1.0	20.6	24.9	5.7	2.7
H <sub>2</sub> S	12.0	Jan-01 07:00	14.6	301	-2.3	1.3	11.9	4.5	2.6
H <sub>2</sub> S	40.0	Jan-01 08:00	17.7	296	-1.8	1.9	39.6	4.4	2.7
H <sub>2</sub> S	96.0	Jan-01 09:00	22.2	292	-1.4	38.4	95.5	10.0	2.9
H <sub>2</sub> S	42.0	Jan-01 10:00	21.2	295	-1.6	17.8	41.9	5.8	2.6
H <sub>2</sub> S	38.0	Jan-01 11:00	18.2	295	-0.6	36.6	37.0	5.1	2.6
H <sub>2</sub> S	12.0	Jan-01 18:00	11.2	294	-4.4	1.1	14.8	4.8	2.6

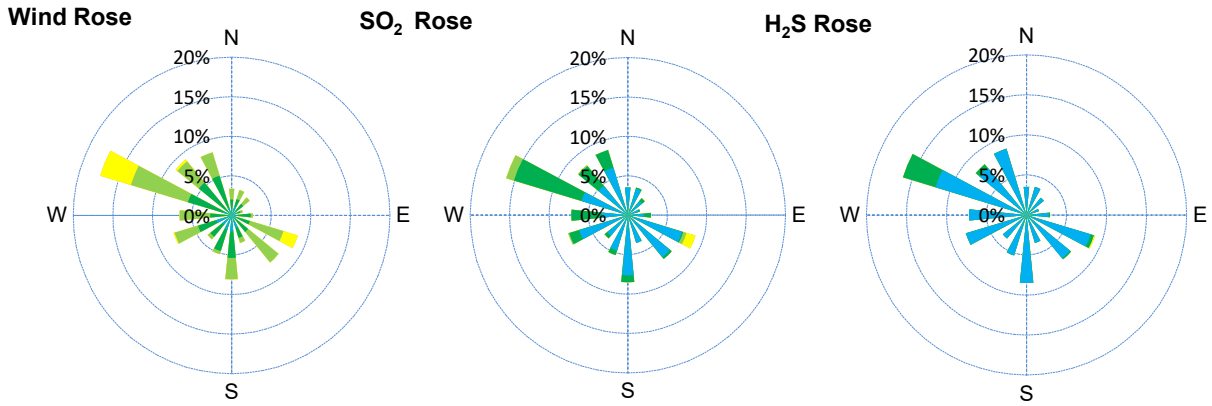
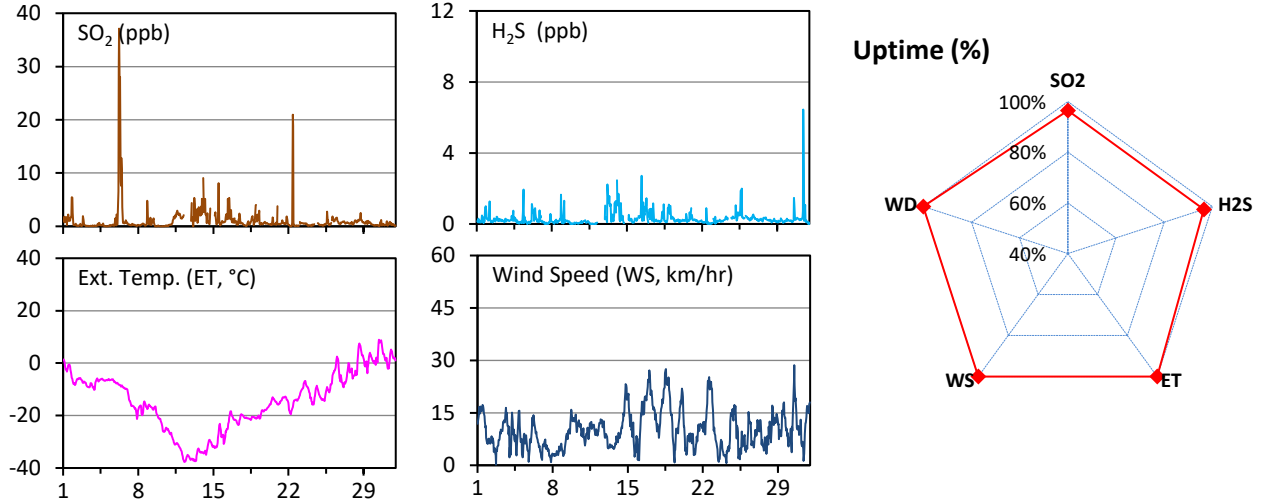
## Exceedance Summary (24-Hour Average)

24-hour Exceedance Information			Summary of Other Parameters During Exceedance						
Pollutant	Conc. ppb	Exceedance Date mmm-dd	WS km/hr	WD deg	ET C	SO <sub>2</sub> ppb	H <sub>2</sub> S ppb	NO <sub>2</sub> ppb	THC ppm
H <sub>2</sub> S	16.0	Jan-1	12.0	297	-3.0	6.0	16.0	5.0	3.0

# Genovus Energy Inc West Station - January 2024 Summary Report

Pollutants		Month Records		24-Hour Records				1-Hour Records				
Name	Conc. Unit	Avg. Conc.	Uptime	Maximum		AAAQO / SAAQS	Exceed Days	Minimum Conc.	Maximum		AAAQO / SAAQS	Exceed Hours
				Conc.	Time				Conc.	Time		
SO <sub>2</sub>	ppb	1.1	96.5%	7.8	Jan-6	48 / 48	0 / 0	-0.2	37.1	Jan-06 06:00	172 / 172	0 / 0
H <sub>2</sub> S	ppb	0.3	96.5%	0.8	Jan-13	3 / 3.6	0 / 0	-0.1	6.0	Jan-31 11:00	10 / 11.0	0 / 0

AAAQO: Alberta Ambient Air Quality Objectives; SAAQS: Saskatchewan Ambient Air Quality Standards.



Parameters	Unit	Color Code for Wind Spd & Pollutant Conc. Class					
Wind Speed	km/hr	1 ≤ WS < 5	5 ≤ WS < 10	10 ≤ WS < 20	20 ≤ WS < 30	30 ≤ WS < 40	WS ≥ 40
SO <sub>2</sub>	ppb	0 ≤ C < 1	1 ≤ C < 5	5 ≤ C < 10	10 ≤ C < 57	57 ≤ C < 172	C ≥ 172
H <sub>2</sub> S	ppb	0 ≤ C < 1	1 ≤ C < 3.6	3.6 ≤ C < 5	5 ≤ C < 8	8 ≤ C < 11	C ≥ 11

**Monthly Update**

\*Air monitoring data has been validated. Data may change after validation process.

\*All compliance parameters were within the Alberta Ambient Air Quality Objectives and the Saskatchewan Ambient Air Quality Standards.

\*All compliance parameters were >90% operational.

\*25 hours flagged as "Analyzer Failure" for SO<sub>2</sub> and H<sub>2</sub>S due to extreme temperatures dropping the IT below manufacturer specifications.

\*Station was calibrated on January 24.