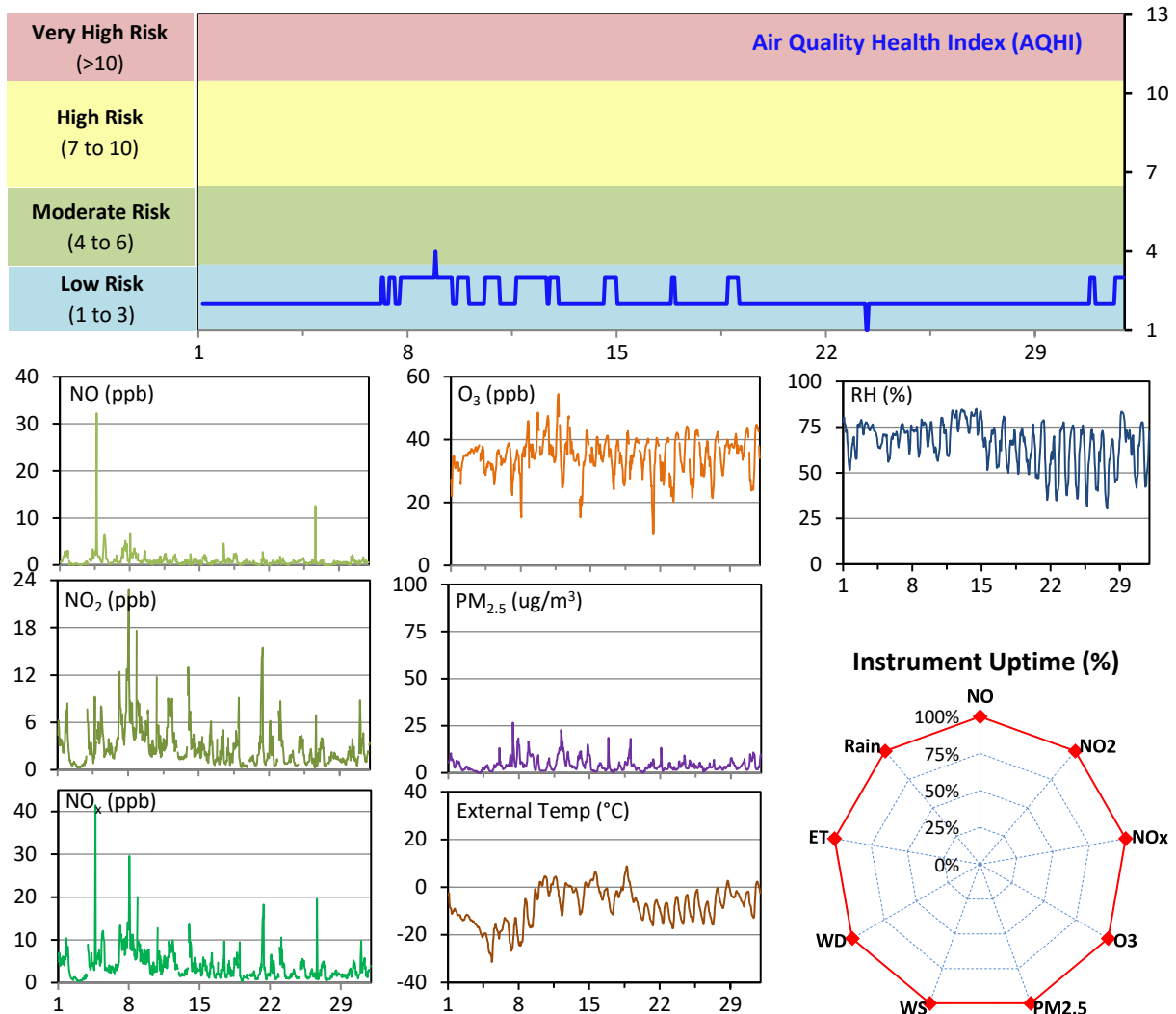


# WYAMZ Clavet Station - March 2024 Summary Report

Pollutants		Month Records		24-Hour Records				1-Hour Records			
Name	Conc. Unit	Avg. Conc.	Uptime	Maximum		SAAQS Objective	Exceed Days	Maximum		SAAQS Objective	Exceed Hours
				Conc.	Time			Conc.	Time		
NO	ppb	0.9	100.0%	3.4	Mar-4	-	-	32.2	Mar-04 16:00	-	-
NO <sub>2</sub>	ppb	2.9	100.0%	8.0	Mar-8	106	0	22.8	Mar-08 01:00	159	0
NO <sub>x</sub>	ppb	3.8	100.0%	10.3	Mar-8	-	-	41.5	Mar-04 16:00	-	-
O <sub>3</sub>	ppb	34.9	100.0%	40.8	Mar-10	-	-	54.5	Mar-11 18:00	82	0
PM <sub>2.5</sub>	ug/m3	4.2	100.0%	10.7	Mar-12	28	0	26.7	Mar-07 09:00	-	-

SAAQS: Saskatchewan Ambient Air Quality Standards

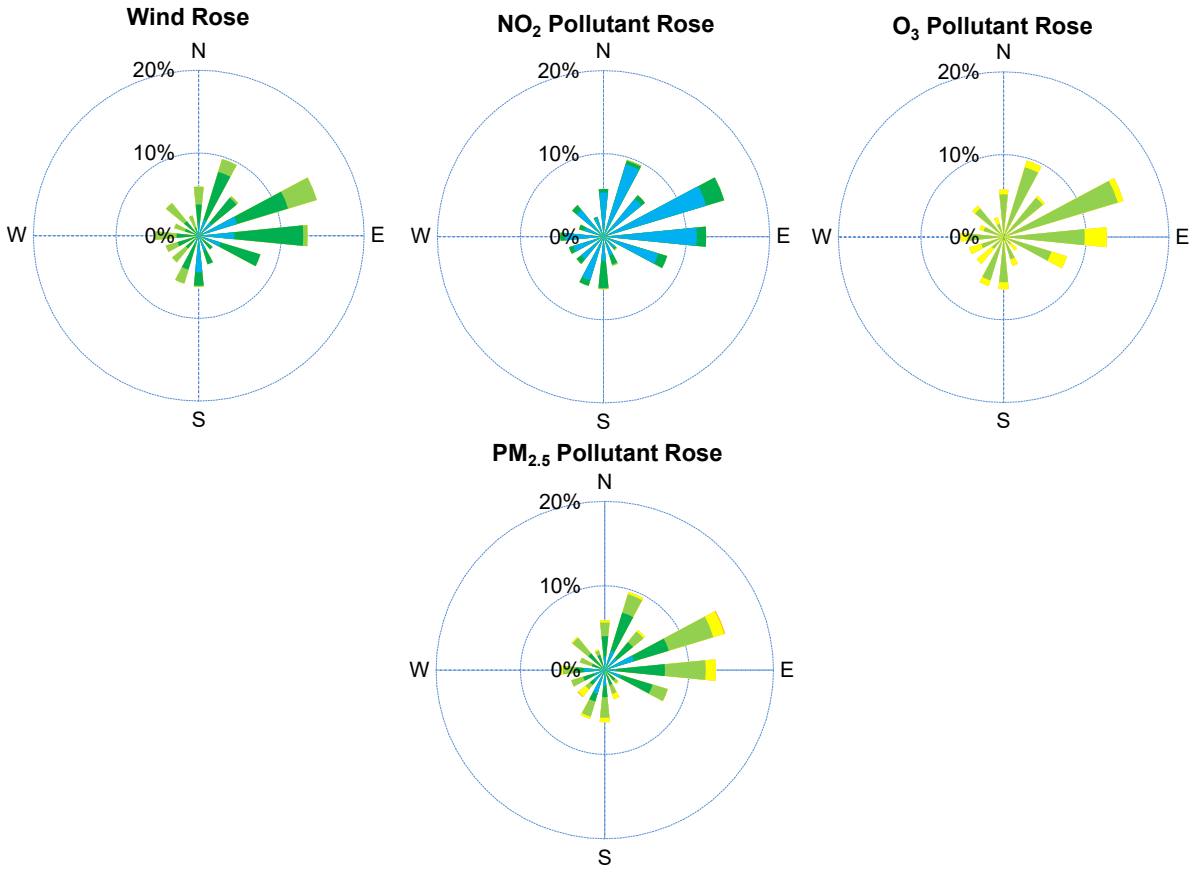


## Monthly Update

- \*All data has been slope, intercept, and baseline corrected. Data may change after validation process.
- \*All compliance parameters were within the Saskatchewan Ambient Air Quality Standards.
- \*All compliance parameters were more than 90% operational for the month.



# WYAMZ Clavet Station - March 2024 Summary Report

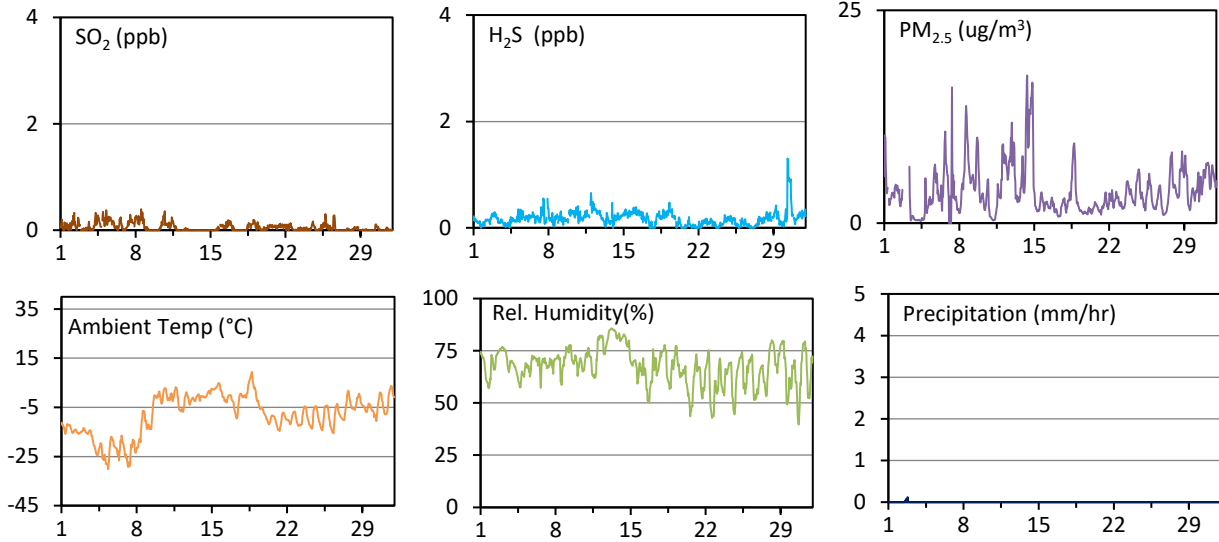


Parameters	Unit	Color Code for Wind Spd & Pollutant Conc. Class						
Wind Speed	kph	$0.3 \leq WS < 1.4$	$1.4 \leq WS < 3.1$	$3.1 \leq WS < 7.8$	$7.8 \leq WS < 10.8$	$10.8 \leq WS < 13.6$	$WS \geq 13.6$	
NO <sub>2</sub>	ppb	$0 \leq C < 5$	$5 \leq C < 15$	$15 \leq C < 30$	$30 \leq C < 100$	$100 \leq C < 212$	$C \geq 212$	
O <sub>3</sub>	ppb	$0 \leq C < 10$	$10 \leq C < 20$	$20 \leq C < 40$	$40 \leq C < 60$	$60 \leq C < 82$	$C \geq 82$	
PM <sub>2.5</sub>	ug/m <sup>3</sup>	$0 \leq C < 2$	$2 \leq C < 4$	$4 \leq C < 10$	$10 \leq C < 20$	$20 \leq C < 30$	$C \geq 30$	

## WYAMZ Kerrobert Station - March 2024 Summary Report

Pollutants		Month Records		24-Hour Records				1-Hour Records			
Name	Conc. Unit	Avg. Conc.	Uptime	Maximum		SAAQS	Exceed Days	Maximum		SAAQS	Exceed Hours
				Conc.	Time	Objective		Conc.	Time	Objective	
SO <sub>2</sub>	ppb	-	100.0%	0.2	Mar-5	48	0	0.4	Mar-08 12:00	172	0
H <sub>2</sub> S	ppb	-	100.0%	0.5	Mar-30	3.6	0	1.3	Mar-30 07:00	11	0
PM <sub>2.5</sub>	ug/m3	3.8	97.6%	10.7	Mar-14	28	0	17.3	Mar-14 08:00	-	-

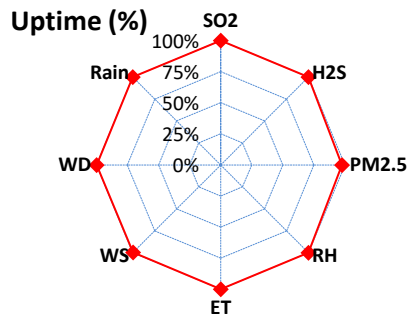
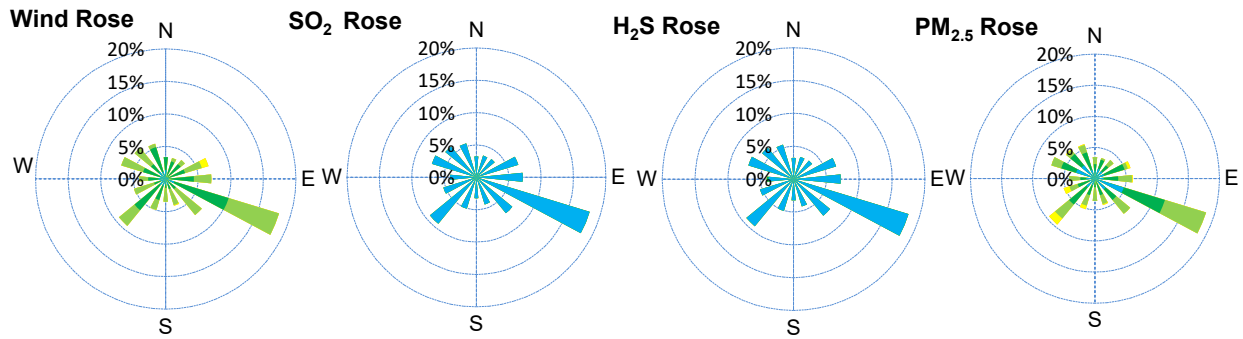
SAAQS: Saskatchewan Ambient Air Quality Standards



### Monthly Update

- \*All data has been slope, intercept, and baseline corrected. Data may change after validation process.
- \*All compliance parameters were within the Saskatchewan Ambient Air Quality Standards.
- \*All compliance parameters were greater than 90% operational for the month.
- \*2 hours of data for WS and WD flagged as "analyzer failure" due to flatlined data.
- \*18 hour of data for PM<sub>2.5</sub> flagged as "analyzer failure" due intermittent spikes and elevated concentrations.

# WYAMZ Kerrobert Station - March 2024 Summary Report

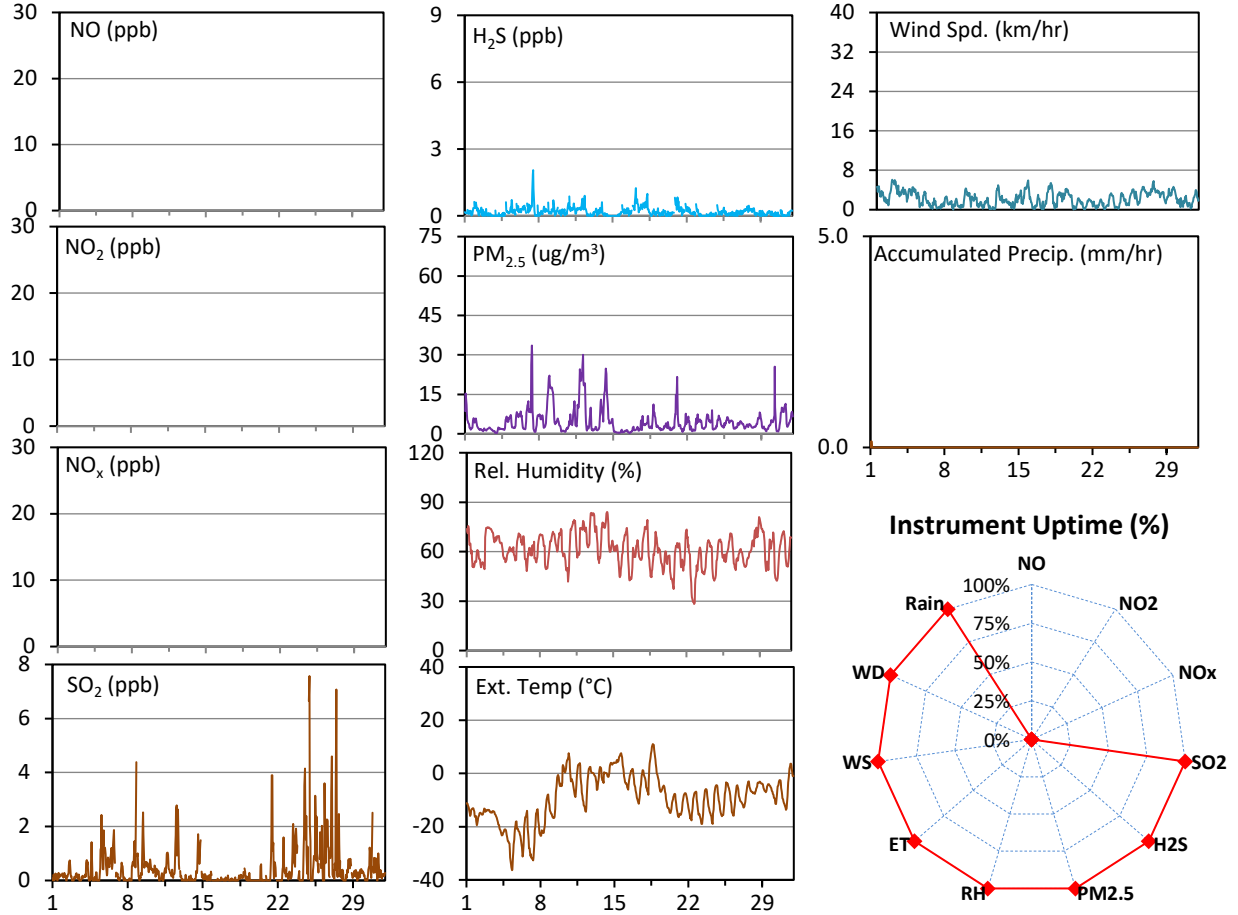


Parameters	Unit	Color Code for Wind Spd & Pollutant Conc. Class					
Wind Speed	kph	0.3 ≤ WS < 1.4	1.4 ≤ WS < 3.1	3.1 ≤ WS < 7.8	7.8 ≤ WS < 10.8	10.8 ≤ WS < 13.6	WS ≥ 13.6
SO <sub>2</sub>	ppb	0 ≤ C < 1	1 ≤ C < 5	5 ≤ C < 10	10 ≤ C < 57	57 ≤ C < 172	C ≥ 172
H <sub>2</sub> S	ppb	0 ≤ C < 1	1 ≤ C < 3.6	3.6 ≤ C < 5	5 ≤ C < 8	8 ≤ C < 10.8	C ≥ 10.8
PM <sub>2.5</sub>	ug/m <sup>3</sup>	0 ≤ C < 2	2 ≤ C < 4	4 ≤ C < 10	10 ≤ C < 20	20 ≤ C < 30	C ≥ 30

# WYAMZ Maidstone Station - March 2024 Summary Report

Pollutants		Month Records		24-Hour Records				1-Hour Records			
Name	Conc. Unit	Avg. Conc.	Uptime	Maximum		SAAQS Objective	Exceed Days	Maximum		SAAQS Objective	Exceed Hours
				Conc.	Time			Conc.	Time		
NO	ppb	-	0.0%	< 0.1	-	-	-	< 0.1	-	-	-
NO <sub>2</sub>	ppb	-	0.0%	< 0.1	-	106	0	< 0.1	-	159	0
NO <sub>x</sub>	ppb	-	0.0%	< 0.1	-	-	-	< 0.1	-	-	-
SO <sub>2</sub>	ppb	0.5	100.0%	1.3	Mar-27	48	0	7.6	Mar-24 22:00	172	0
H <sub>2</sub> S	ppb	0.2	100.0%	0.5	Mar-17	3.6	0	2.1	Mar-07 11:00	11	0
PM <sub>2.5</sub>	ug/m3	4.7	100.0%	10.8	Mar-12	28	0	33.6	Mar-07 07:00	-	-

SAAQS: Saskatchewan Ambient Air Quality Standards

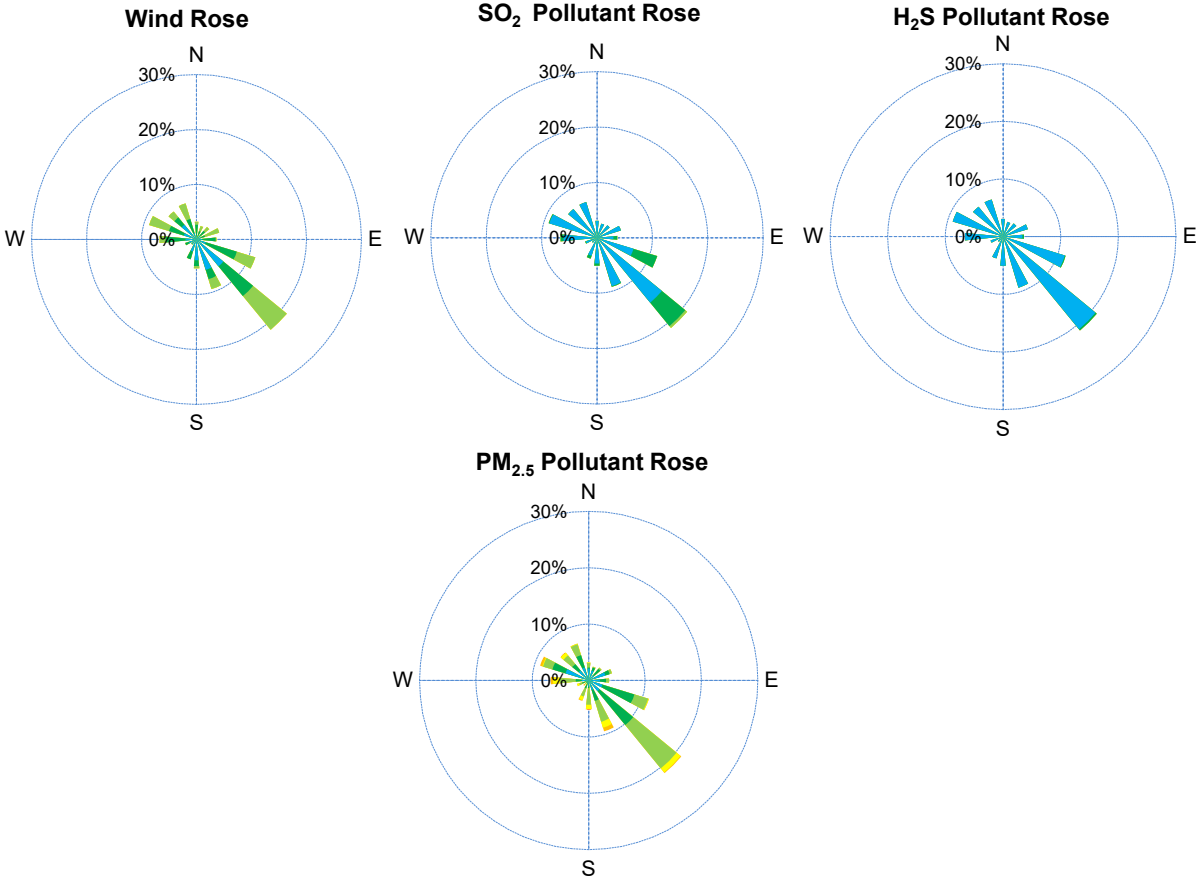


## Monthly Update

- \*All data has been slope, intercept, and baseline corrected. Data may change after validation process.
- \*All compliance parameters were within the Saskatchewan Ambient Air Quality Standards.
- \*All compliance parameters were greater than 90% operational, except NO/NOx/NO2.
- \*All NO/NOx/NO2 data was flagged as "analyzer failure" due to the removal of the analyzer from service on August 24th, 2023.



# WYAMZ Maidstone Station - March 2024 Summary Report



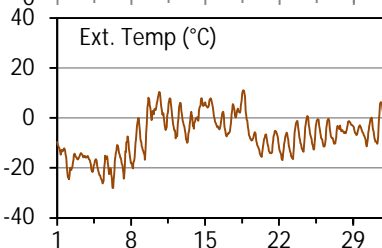
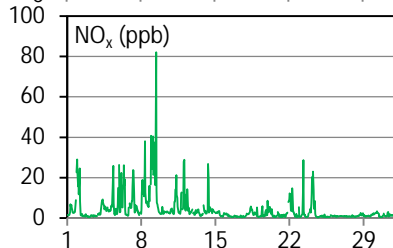
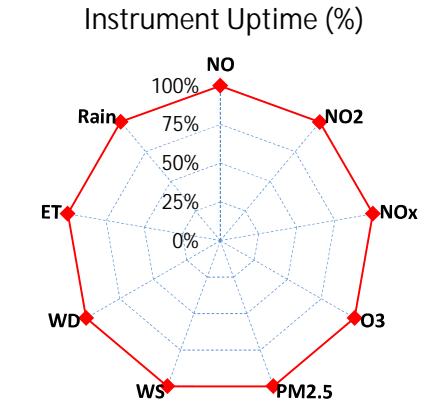
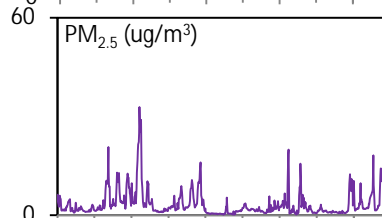
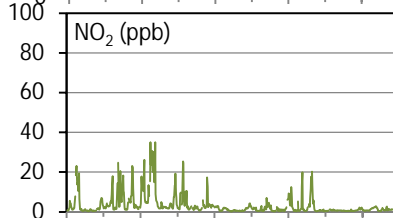
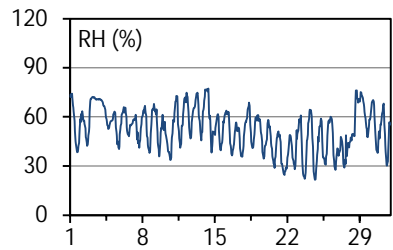
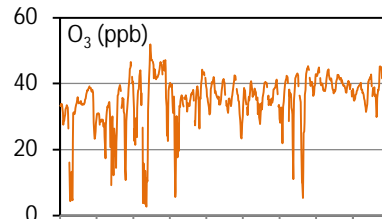
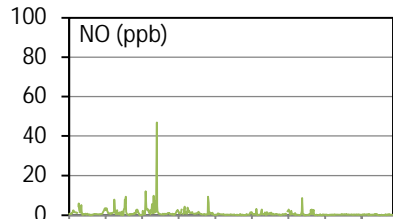
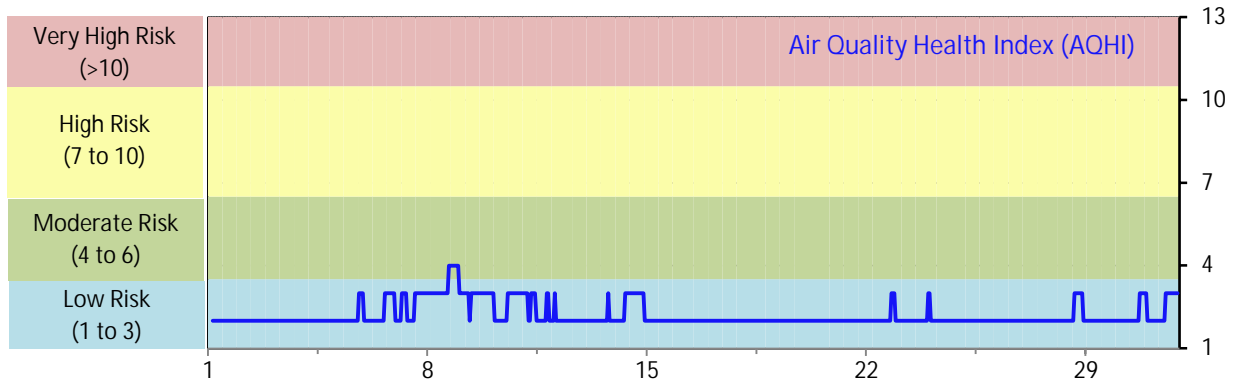
Parameters	Unit	Color Code for Wind Spd & Pollutant Conc. Class						
Wind Speed	kph	$0.3 \leq WS < 1.4$	$1.4 \leq WS < 3.1$	$3.1 \leq WS < 7.8$	$7.8 \leq WS < 10.8$	$10.8 \leq WS < 13.6$	$WS \geq 13.6$	
SO <sub>2</sub>	ppb	$0 \leq C < 1$	$1 \leq C < 5$	$5 \leq C < 10$	$10 \leq C < 57$	$57 \leq C < 172$	$C \geq 172$	
NO <sub>2</sub>	ppb	$0 \leq C < 5$	$5 \leq C < 15$	$15 \leq C < 30$	$30 \leq C < 100$	$100 \leq C < 212$	$C \geq 212$	
H <sub>2</sub> S	ppb	$0 \leq C < 1$	$1 \leq C < 3.6$	$3.6 \leq C < 5$	$5 \leq C < 8$	$8 \leq C < 10.8$	$C \geq 10.8$	
PM <sub>2.5</sub>	ug/m <sup>3</sup>	$0 \leq C < 2$	$2 \leq C < 4$	$4 \leq C < 10$	$10 \leq C < 20$	$20 \leq C < 30$	$C \geq 30$	



# WYAMZ Meadow Lake City Station - March 2024 Summary Report

Pollutants		Month Records		24-Hour Records				1-Hour Records			
Name	Conc. Unit	Avg. Conc.	Uptime	Maximum		SAAQS Objective	Exceed Days	Maximum		SAAQS Objective	Exceed Hours
				Conc.	Time			Conc.	Time		
NO	ppb	0.8	99.9%	4.3	Mar-9	-	-	47.0	Mar-09 09:00	-	-
NO <sub>2</sub>	ppb	3.3	99.9%	13.1	Mar-9	106	0	35.1	Mar-09 09:00	159	0
NO <sub>x</sub>	ppb	4.2	99.9%	17.4	Mar-9	-	-	82.1	Mar-09 09:00	-	-
O <sub>3</sub>	ppb	35.0	100.0%	43.8	Mar-10	-	-	52.0	Mar-09 15:00	82	0
PM <sub>2.5</sub>	ug/m3	3.3	100.0%	13.6	Mar-8	28	0	32.8	Mar-08 18:00	-	-

SAAQS: Saskatchewan Ambient Air Quality Standards

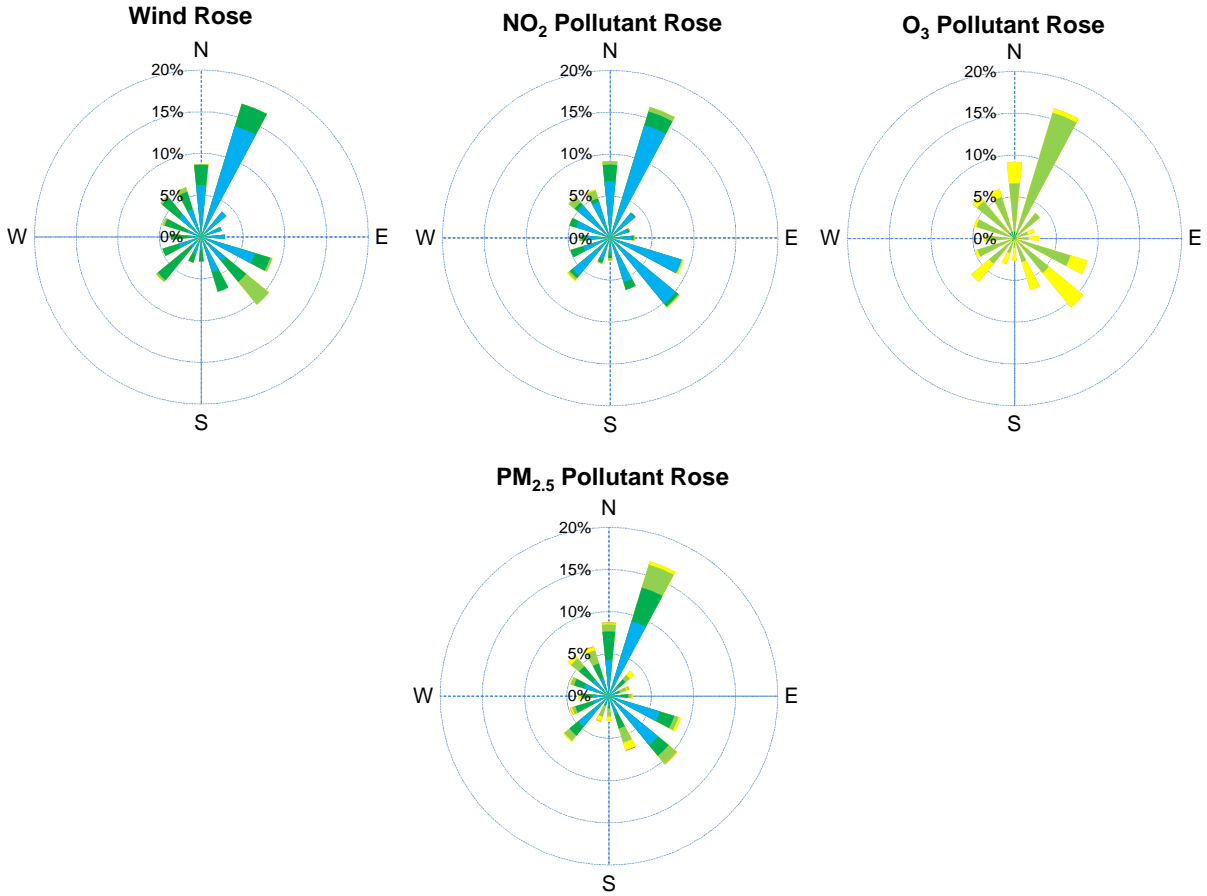


## Monthly Update

- \*All data has been slope, intercept, and baseline corrected. Data may change after validation process.
- \*All compliance parameters were within the Saskatchewan Ambient Air Quality Standards.
- \*All compliance parameters were greater than 90% operational.
- \*1 hour of data was flagged as "power failure" for NO/NO2/NOX due to a power issue to the analyzer.



# WYAMZ Meadow Lake City Station - March 2024 Summary Report



Parameters	Unit	Color Code for Wind Spd & Pollutant Conc. Class						
Wind Speed	kph	$0.3 \leq WS < 1.4$	$1.4 \leq WS < 3.1$	$3.1 \leq WS < 7.8$	$7.8 \leq WS < 10.8$	$10.8 \leq WS < 13.6$	$WS \geq 13.6$	
NO <sub>2</sub>	ppb	$0 \leq C < 5$	$5 \leq C < 15$	$15 \leq C < 30$	$30 \leq C < 100$	$100 \leq C < 212$	$C \geq 212$	
O <sub>3</sub>	ppb	$0 \leq C < 10$	$10 \leq C < 20$	$20 \leq C < 40$	$40 \leq C < 60$	$60 \leq C < 82$	$C \geq 82$	
PM <sub>2.5</sub>	ug/m <sup>3</sup>	$0 \leq C < 2$	$2 \leq C < 4$	$4 \leq C < 10$	$10 \leq C < 20$	$20 \leq C < 30$	$C \geq 30$	

