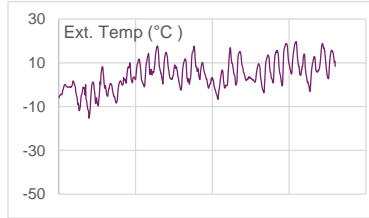
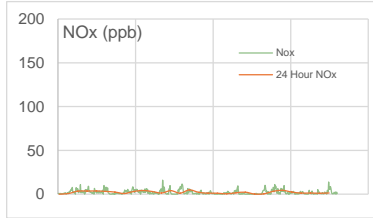
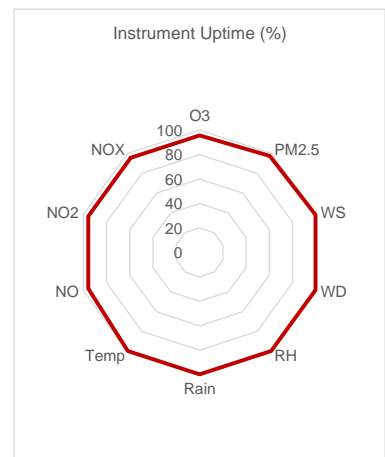
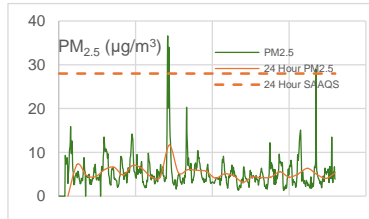
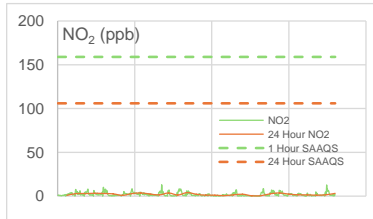
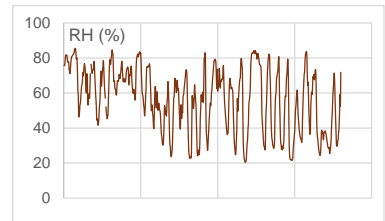
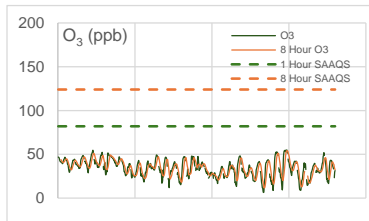
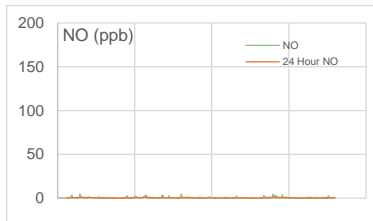
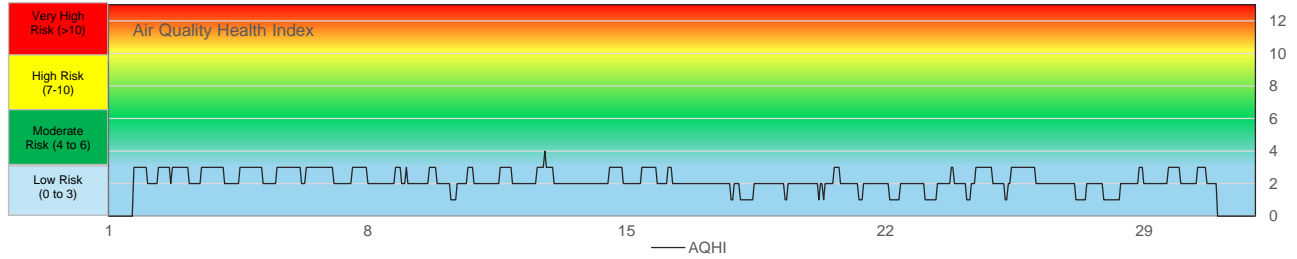


WYAMZ Clavet Station - April 2025 Summary Report

Pollutants		Month Records		24 Hour Records				1 Hour Records			
Name	Unit	Average Concentration	Uptime	Maximum		SAAQS Objective	Exceed Days	Maximum		SAAQS Objective	Exceed Hours
				Conc.	Date			Conc.	Date and Time		
NO	ppb	0.3	95.7%	0.88	24-Apr	-	-	4.7	4/3/2025 10:00 AM	-	-
NO ₂	ppb	2.1	95.7%	4.07	14-Apr	106	0	13	4/12/2025 6:00 AM	159	0
NO _x	ppb	2.2	95.7%	4.87	14-Apr	-	-	16	4/12/2025 6:00 AM	-	-
O ₃	ppb	34.1	95.7%	54.10	25-Apr	124 (8 hours)	0	54.9	4/25/2025 6:00 PM	82	0
PM _{2.5}	µg/m ³	5.4	97.5%	11.65	12-Apr	28	0	36.6	4/12/2025 8:00 PM	-	-

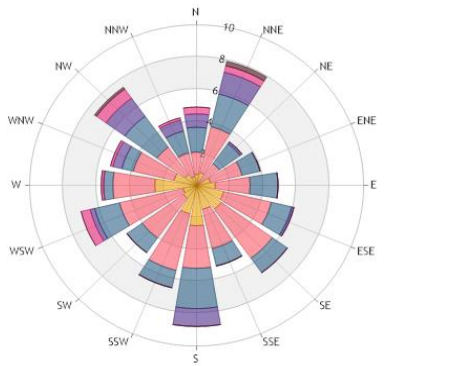
SAAQS: Saskatchewan Ambient Air Quality Standards



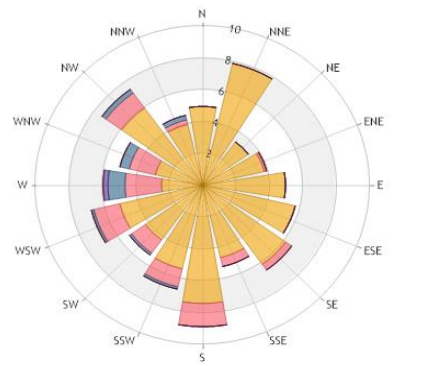
Exceedance Summary

24-hour Exceedance Information			Summary of other Parameters during Exceedance							
Pollutant	Date	Conc.	WS	WD	Precip.	NO	NO ₂	NO _x	O ₃	PM _{2.5}

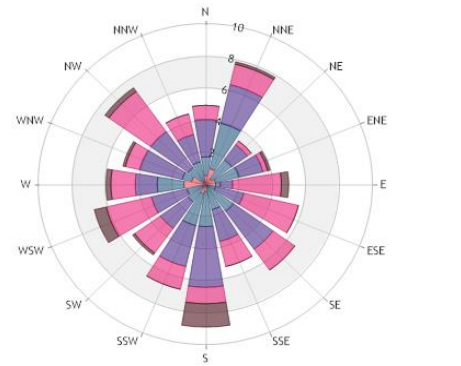
WYAMZ Clavet Station - April 2025 Summary Report



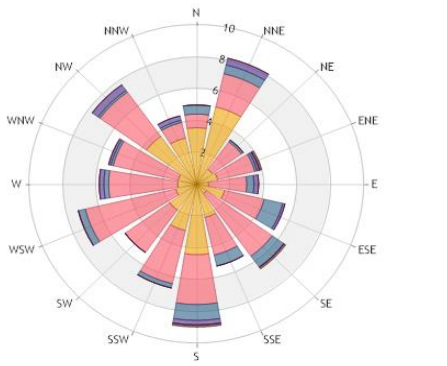
Wind Rose
Icon Classes (m/s): 0.5-1.2, 1.2-2.4, 2.4-3.6, 3.6-4.8, 4.8-6.0, >6.0



Pollution Rose NO₂
Icon Classes (ppb): 0-4, 4-8, 8-12, 12-16, 16-20, >20.0



Pollution Rose O₃
Icon Classes (ppb): 0-10, 10-20, 20-30, 30-40, 40-50, >50.0



Pollution Rose PM_{2.5}
Icon Classes (ug/m3): 0-4, 4-8, 8-12, 12-16, 16-20, >20.0

Parameters	Unit	Color Code for Wind Speed and Pollutant Conc. Class					
Wind Speed	m/s	0.5 - 1.2	1.2 - 2.4	2.4 - 3.6	3.6 - 4.8	4.8 - 6.0	> 6.0
NO ₂	ppb	0.0-C-4.0	4.0-C-8.0	8.0-C-12.0	12.0-C-16.0	16.0-C-20.0	> 20
O ₃	ppb	0.0-C-10.0	10.0-C-20.0	20.0-C-30.0	30.0-C-40.0	40.0-C-50.0	> 50
PM _{2.5}	µg/m ³	0.0-C-10.0	10.0-C-20.0	20.0-C-30.0	30.0-C-40.0	40.0-C-50.0	> 50

Monthly Update

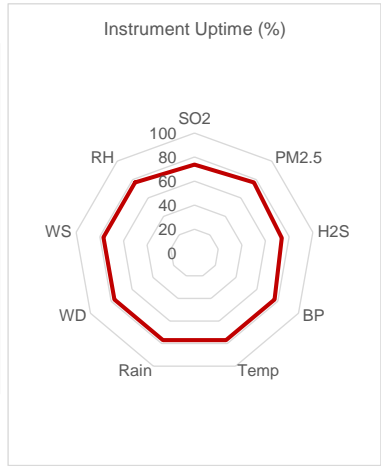
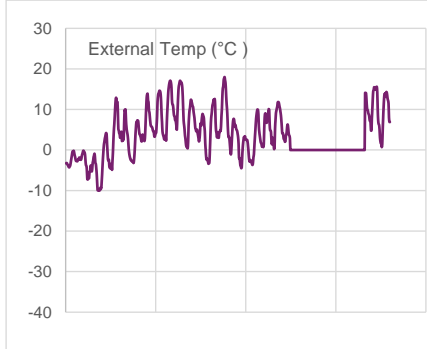
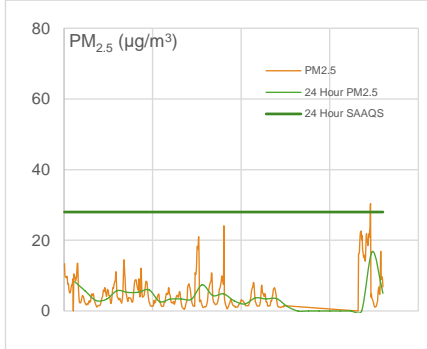
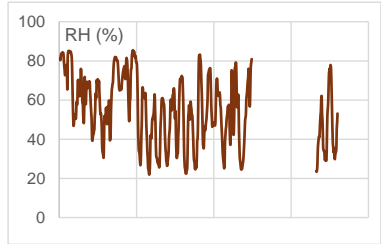
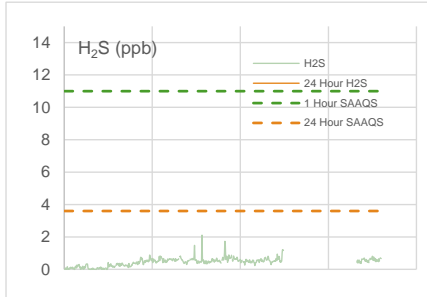
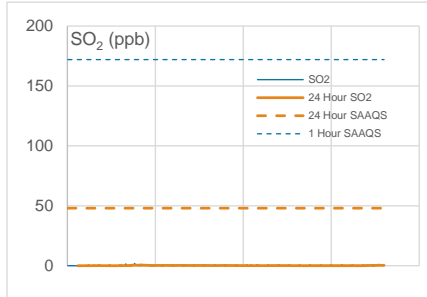
- * All data has been zero drift and baseline corrected, if needed. Data may change after final validation process.
- * All compliance parameters were within the Saskatchewan Ambient Air Quality Standards.
- * All parameters were more than 90% operational for the month.
- * The PM_{2.5} monitor was reinstalled following its servicing and commenced regular operation on April 1, 2025
- * One hour of data were flagged for all gas analyzers due to daily IZS checks, resulting in the loss of one hour of data each day.



WYAMZ Kerrobert Station - April 2025 Summary Report

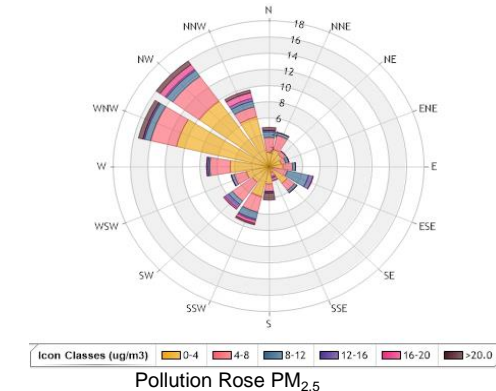
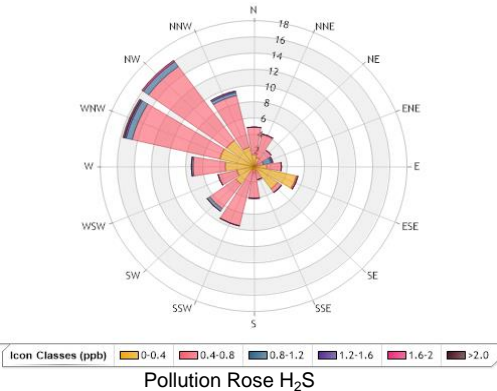
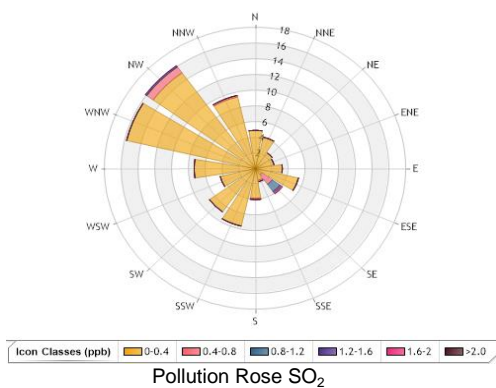
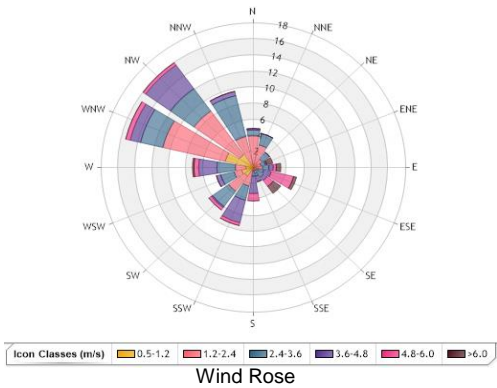
Pollutants		Month Records		24 Hour Records				1 Hour Records			
Name	Unit	Average Concentration	Uptime	Maximum		SAAQS Objective	Exceed Days	Maximum		SAAQS Objective	Exceed Hours
				Conc.	Date			Conc.	Date and Time		
SO ₂	ppb	0.2	73.8%	0.6	7-Apr	48	0	1.9	4/7/2025 9:00 AM	172	0
H ₂ S	ppb	0.5	73.8%	0.8	16-Apr	3.6	0	2.1	4/14/2025 1:00 AM	11	0
PM _{2.5}	µg/m ³	5	76.8%	16.8	29-Apr	28	0	30.4	4/29/2025 8:00 PM	-	-

SAAQS: Saskatchewan Ambient Air Quality Standards



Exceedance Summary								
24-hour Exceedance Information			Summary of other Parameters during Exceedance					
Pollutant	Date	Conc.	WS	WD	Precip.	SO ₂	H ₂ S	PM _{2.5}

WYAMZ Kerrobert Station - April 2025 Summary Report



Parameters	Unit	Color Code for Wind Speed and Pollutant Conc. Class					
Wind Speed	m/s	0.5-W-1.2	1.2-W- 2.4	2.4-W-3.6	3.6-W-4.8	4.8-W-6.0	> 6.0
SO ₂	ppb	0.0-C-0.4	0.4-C-0.8	0.8-C-1.2	1.2-C-1.6	1.6-C-2.0	C > 2.0
H ₂ S	ppb	0.0-C-0.4	0.4-C-0.8	0.8-C-1.2	1.2-C-1.6	1.6-C-2.0	C > 2.0
PM _{2.5}	µg/m ³	0.0-C-4.0	4.0-C-8.0	8.0-C-12.0	12.0-C-16.0	16.0-C-20.0	C > 20.0

Monthly Update

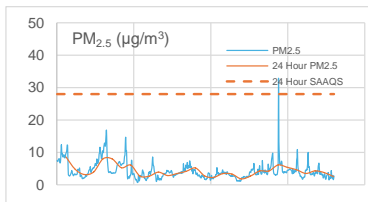
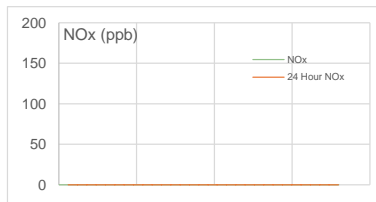
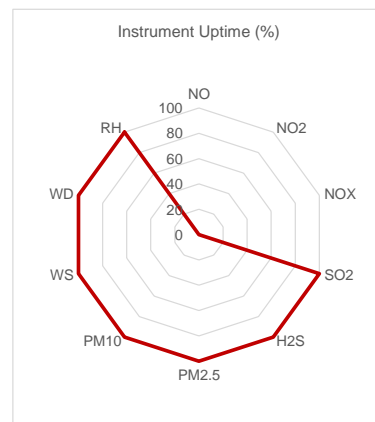
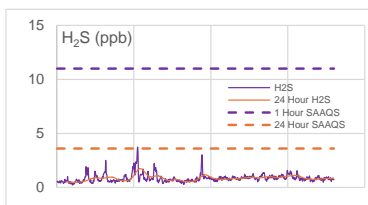
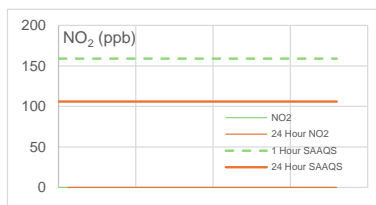
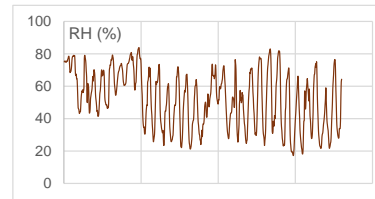
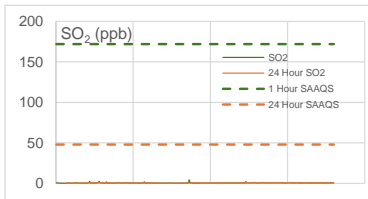
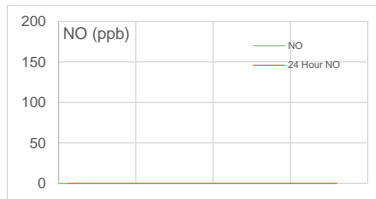
- * All data has been zero drift, and baseline corrected, if needed. Data may change after final validation process.
- * All compliance parameters were within the Saskatchewan Ambient Air Quality Standards.
- * All compliance parameters were less than 90% operational for the month.
- * A total of 166 hours of data was lost across all analyzers due to an Airpointer system error during May 21-28, 2025, likely caused by a power issue.
- * One hour of data were flagged for all gas analyzers due to daily IZS checks, resulting in the loss of one hour of data each day.



WYAMZ Maidstone Station - April 2025 Summary Report

Pollutants		Month Records		24 Hour Records				1 Hour Records			
Name	Unit	Average Concentration	Uptime	Maximum		SAAQS Objective	Exceed Days	Maximum		SAAQS Objective	Exceed Hours
				Conc.	Date			Conc.	Date and Time		
NO	ppb	No Data	0.0%	0.00	-	-	-	No Data	-	-	-
NO ₂	ppb	No Data	0.0%	0.00	-	106	0	No Data	-	159	0
NO _x	ppb	No Data	0.0%	0.00	-	-	-	No Data	-	-	-
SO ₂	ppb	0.6	100.0%	0.9	15-Apr	48	0	4.4	4/15/2025 9:00 AM	172	0
H ₂ S	ppb	0.9	100.0%	1.7	9-Apr	3.6	0	3.7	4/9/2025 6:00 PM	11	0
PM _{2.5}	µg/m ³	4.3	100.0%	8.6	1-Apr	28	0	32.9	4/25/2025 12:00 AM	-	-

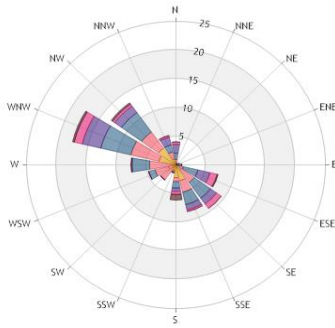
SAAQS: Saskatchewan Ambient Air Quality Standards



Exceedance Summary

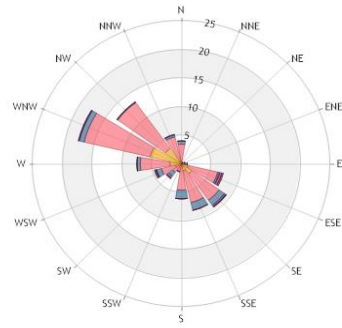
Exceedance Information			Summary of other Parameters during Exceedance							
Pollutant	Date	Conc.	WS	WD	Precip.	NO	NO ₂	NO _x	SO ₂	PM _{2.5}

WYAMZ Maidstone Station - April 2025 Summary Report



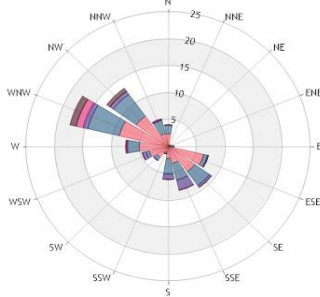
Icon Classes (m/s) 0.5-1.2 1.2-2.4 2.4-3.6 3.6-4.8 4.8-6.0 >6.0

Wind Rose



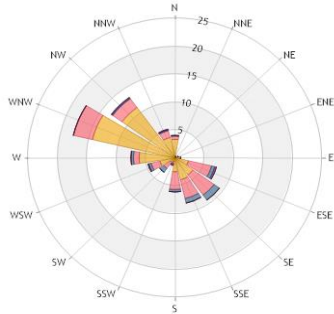
Icon Classes (ppb) 0-0.4 0.4-0.8 0.8-1.2 1.2-1.6 1.6-2 >2.0

Pollution Rose SO₂



Icon Classes (ppb) 0-0.4 0.4-0.8 0.8-1.2 1.2-1.6 1.6-2 >2.0

Pollution Rose H₂S



Icon Classes (ug/m3) 0-4 4-8 8-12 12-16 16-20 >20.0

Pollution Rose PM_{2.5}

Parameters	Unit	Color Code for Wind Speed and Pollutant Conc. Class						
Wind Speed	m/s	0.5 - 1.2	1.2 - 2.4	2.4 - 3.6	3.6 - 4.8	4.8 - 6.0	WS > 6.0	
SO ₂	ppb	0.0-C-0.4	0.4-C-0.8	0.8-C-1.2	1.2-C-1.6	1.6-C-2.0	C > 2.0	
H ₂ S	ppb	0.0-C-0.4	0.4-C-0.8	0.8-C-1.2	1.2-C-1.6	1.6-C-2.0	C > 2.0	
PM _{2.5}	ug/m ³	0.0-C-4.0	4.0-C-8.0	8.0-C-12.0	12.0-C-16.0	16.0-C-20.0	C > 20.0	

Monthly Update

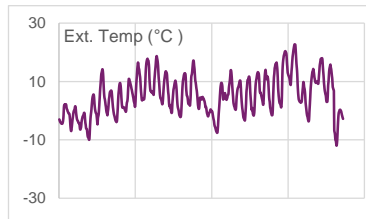
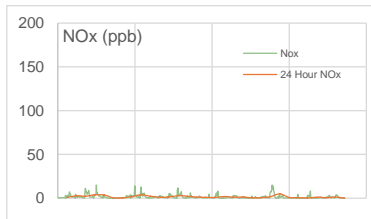
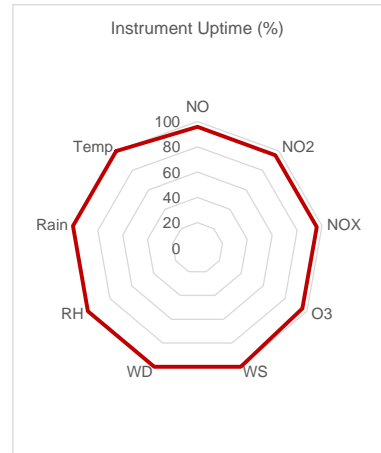
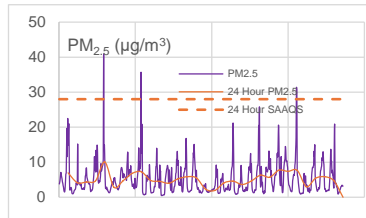
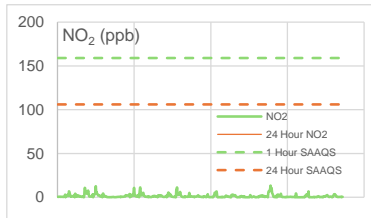
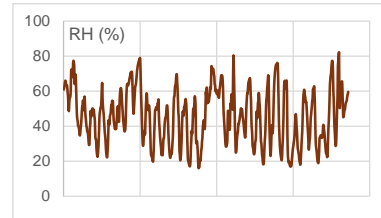
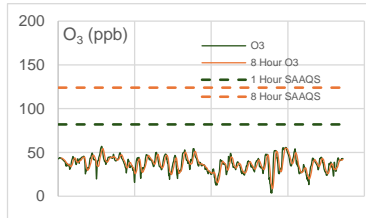
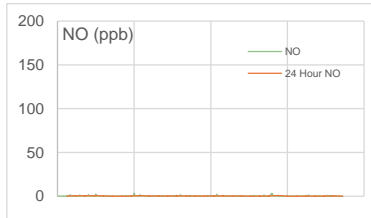
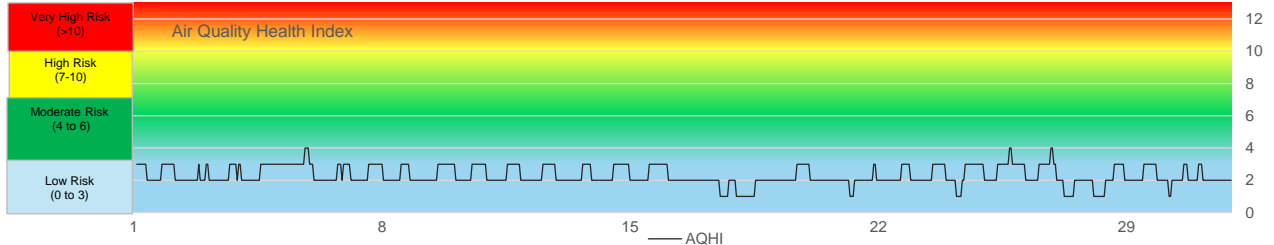
- * All data has been zero drift, and baseline corrected, if needed. Data may change after final validation process.
- * All compliance parameters were within the Saskatchewan Ambient Air Quality Standards.
- * All compliance gas parameters were more than 90% operational for the month with the exception of the NO₂ analyzer which was removed on December 17, 2024 for service and maintenance.
- * The internal daily IZS checks for the H₂S and SO₂ analyzers are currently malfunctioning, resulting in the data acquisition system not receiving daily calibration data.



WYAMZ Meadow Lake Station - April 2025 Summary Report

Pollutants		Month Records		24 Hour Records				1 Hour Records			
Name	Unit	Average Concentration	Uptime	Maximum		SAAQS Objective*	Exceed Days	Maximum		SAAQS Objective	Exceed Hours
				Conc.	Date			Conc.	Date and Time		
NO	ppb	0.3	95.8%	0.82	24-Apr	-	-	3.4	4/9/2025 8:00 AM	-	-
NO ₂	ppb	1.4	95.8%	4.10	24-Apr	106	0	13.3	4/24/2025 4:00 AM	159	0
NO _x	ppb	1.7	95.8%	4.93	24-Apr	-	-	15.1	4/5/2025 4:00 AM	-	-
O ₃	ppb	37	95.8%	54.78	25-Apr	124 (8 hours)	0	57	4/5/2025 6:00 PM	82	0
PM _{2.5}	µg/m ³	5.2	100.0%	10.07	5-Apr	28	0	40.9	4/5/2025 9:00 PM	-	-

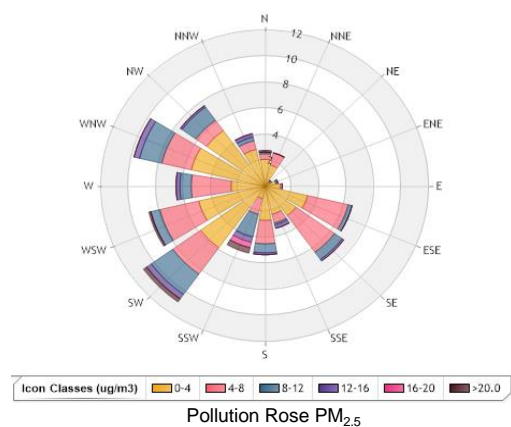
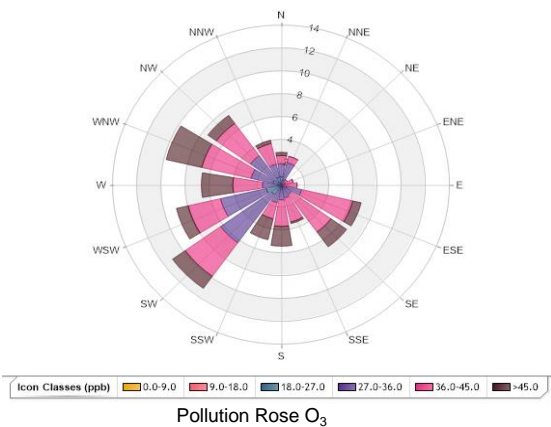
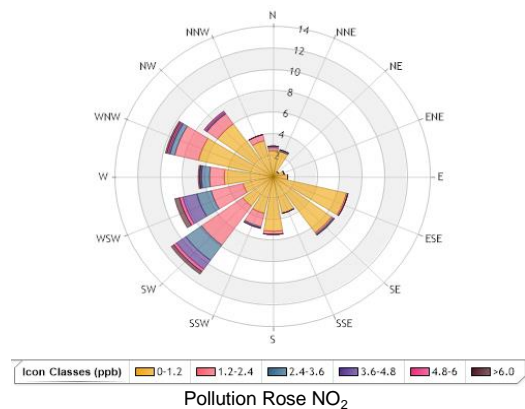
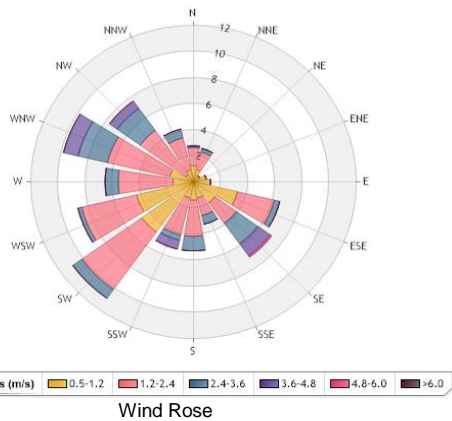
SAAQS: Saskatchewan Ambient Air Quality Standards



Exceedance Summary

24-hour Exceedance Information			Summary of other Parameters during Exceedance							
Pollutant	Date	Conc.	WS	WD	Precip.	NO	NO ₂	NO _x	O ₃	PM _{2.5}

WYAMZ Meadow Lake Station - April 2025 Summary Report



Parameters	Unit	Color Code for Wind Speed and Pollutant Conc. Class						
Wind Speed	m/s	0.5-W-1.2	1.2-W-2.4	2.4-W-3.6	3.6-W-4.8	4.8-W-6.0	W > 6.0	
NO ₂	ppb	0.0-C-1.2	1.2-C-2.4	2.4-C-3.6	3.6-C-4.8	4.8-C-6.0	C > 6.0	
O ₃	ppb	0.0-C-9.0	9.0-C-18.0	18.0-C-27.0	27.0-C-36.0	36.0-C-45.0	C > 45.0	
PM _{2.5}	µg/m ³	0.0-C-4.0	4.0-C-8.0	8.0-C-12.0	12.0-C-16.0	16.0-C-20.0	C > 20.0	

Monthly Update

- * All data has been zero drift, and baseline corrected, if needed. Data may change after final validation process.
- * All compliance parameters were within the Saskatchewan Ambient Air Quality Standards.
- * All compliance parameters were more than 90% operational for the month.
- * One hour of data was flagged for all gas analyzers due to daily IZS checks, resulting in the loss of one hour of data each day.

