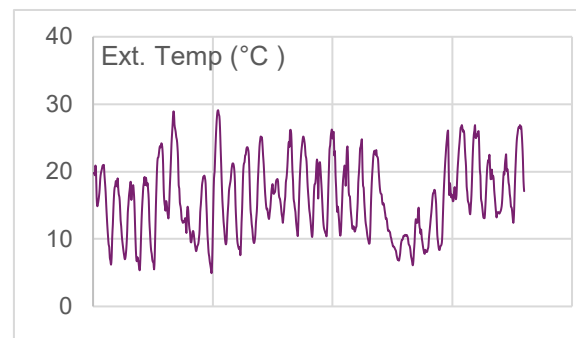
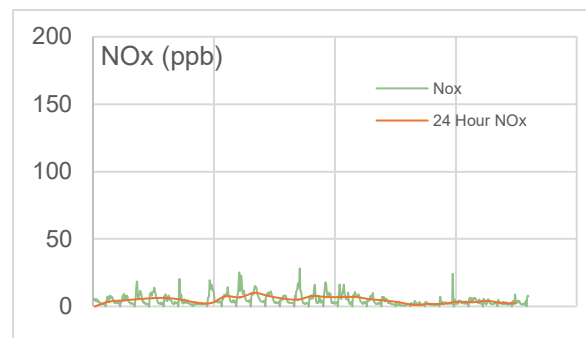
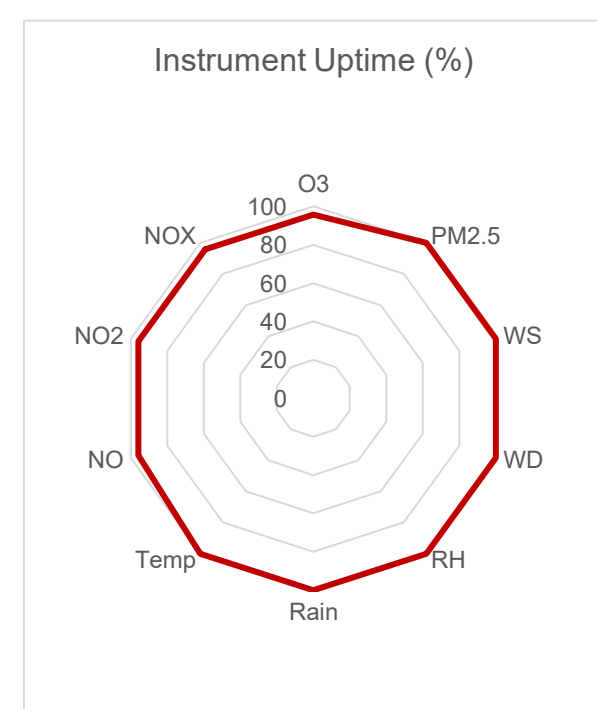
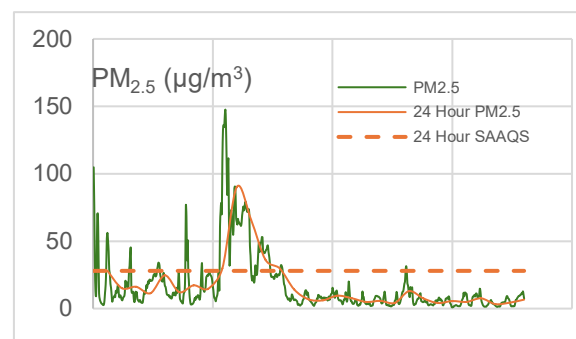
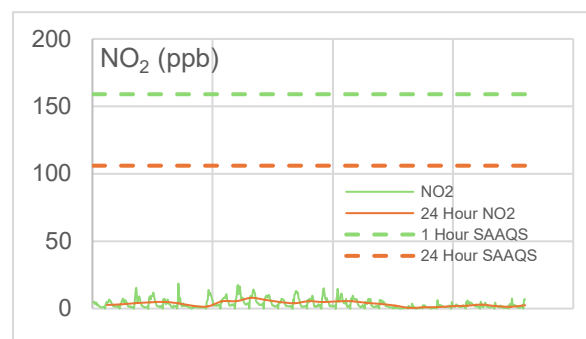
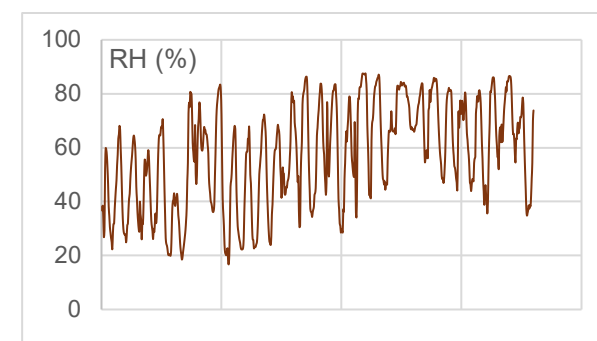
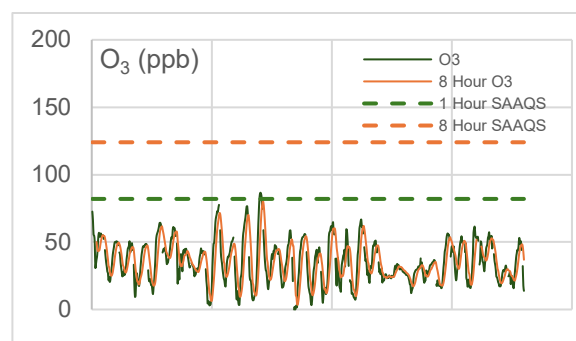
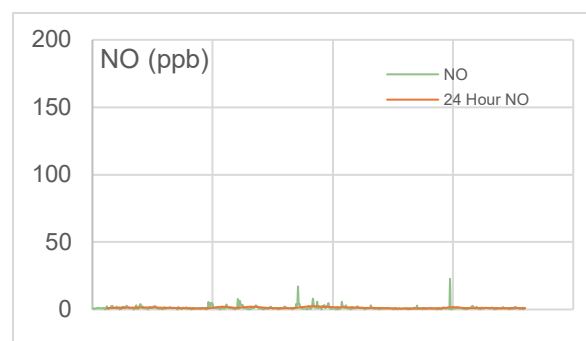
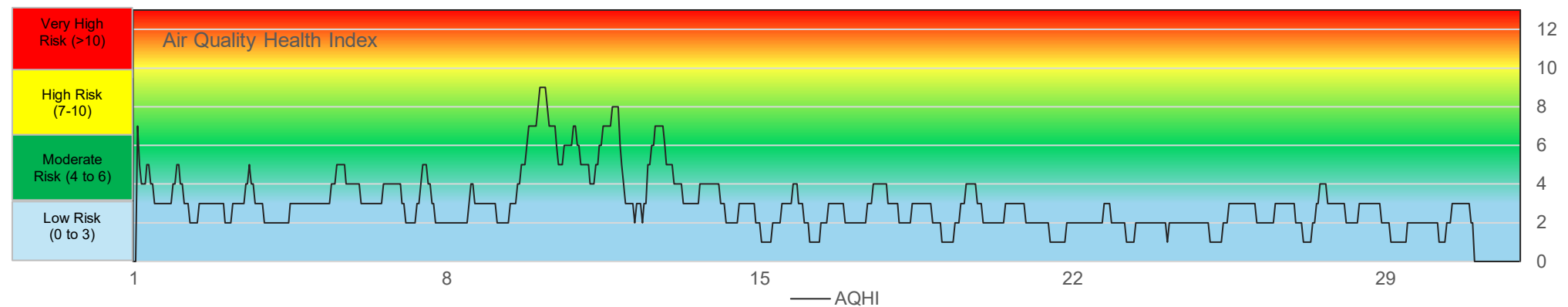


WYAMZ Clavet Station - June 2025 Summary Report

Pollutants		Month Records		24 Hour Records				1 Hour Records			
Name	Unit	Average Concentration	Uptime	Maximum		SAAQS Objective	Exceed Days	Maximum		SAAQS Objective	Exceed Hours
				Conc.	Date			Conc.	Date and Time		
NO	ppb	1.2	95.8%	2.26	15-Jun	-	-	22.7	6/25/2025 7:00 PM	-	-
NO ₂	ppb	3.6	95.8%	7.97	11-Jun	106	0	18.6	6/6/2025 11:00 PM	159	0
NO _x	ppb	4.8	95.8%	10.03	11-Jun	-	-	28.3	6/15/2025 6:00 AM	-	-
O ₃	ppb	35.4	95.7%	80.53	12-Jun	124 (8 hours)	0	86.6	6/12/2025 5:00 PM	82	4
PM _{2.5}	µg/m ³	16.9	100.0%	90.15	10-Jun	28	6	147.6	6/10/2025 5:00 AM	-	-

SAAQS: Saskatchewan Ambient Air Quality Standards

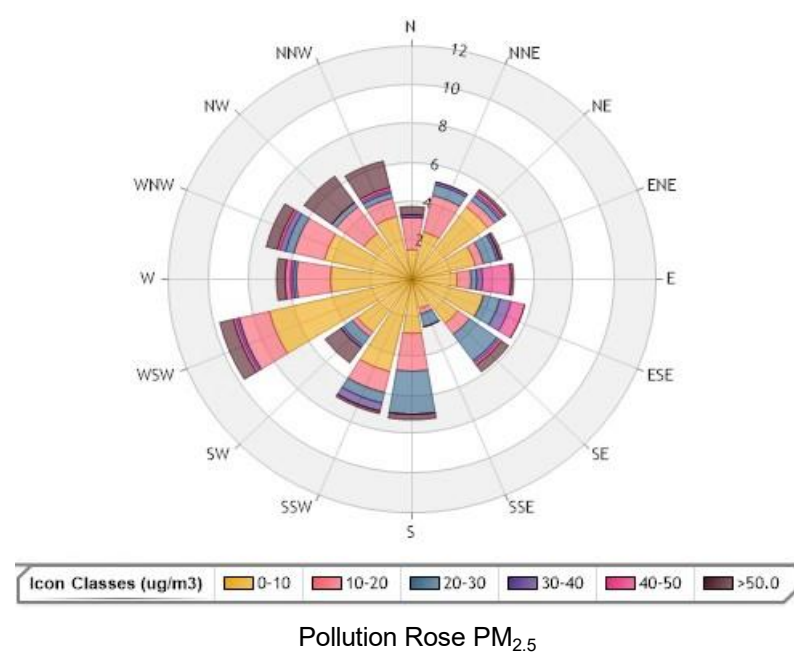
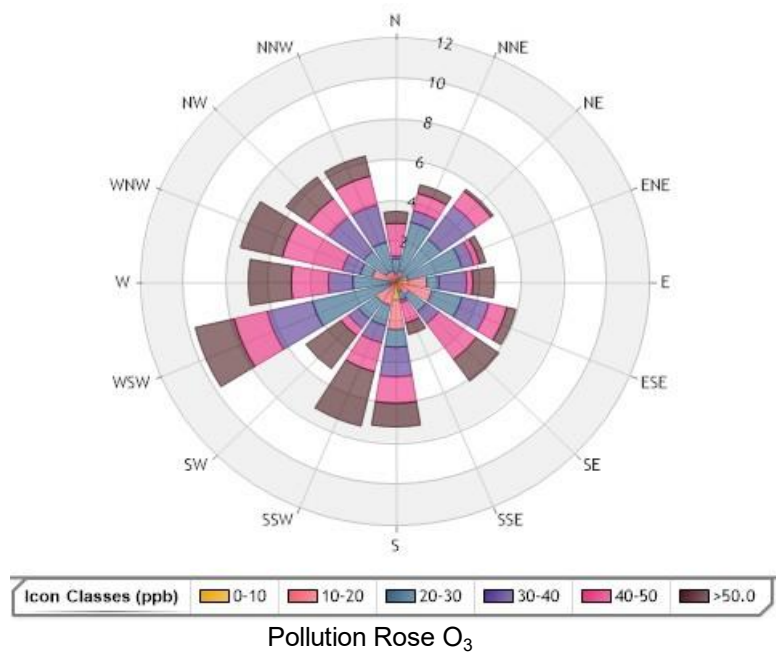
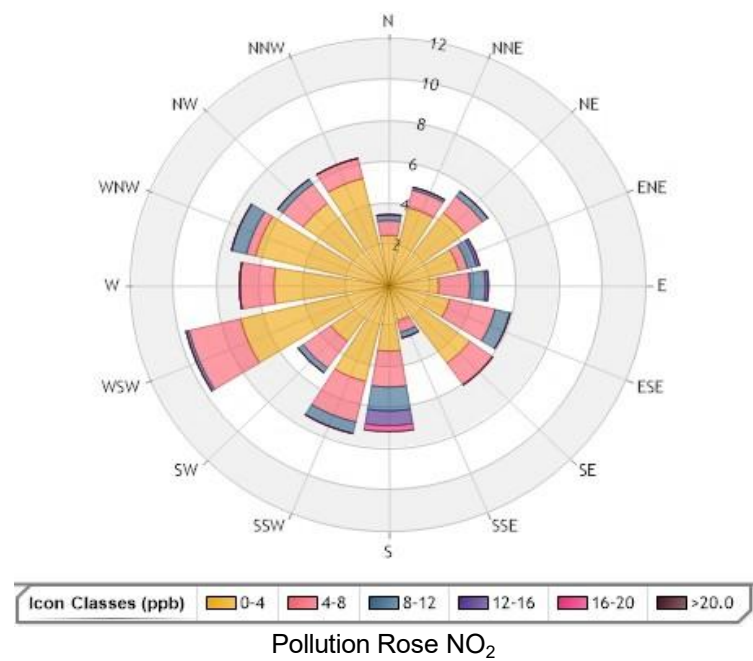
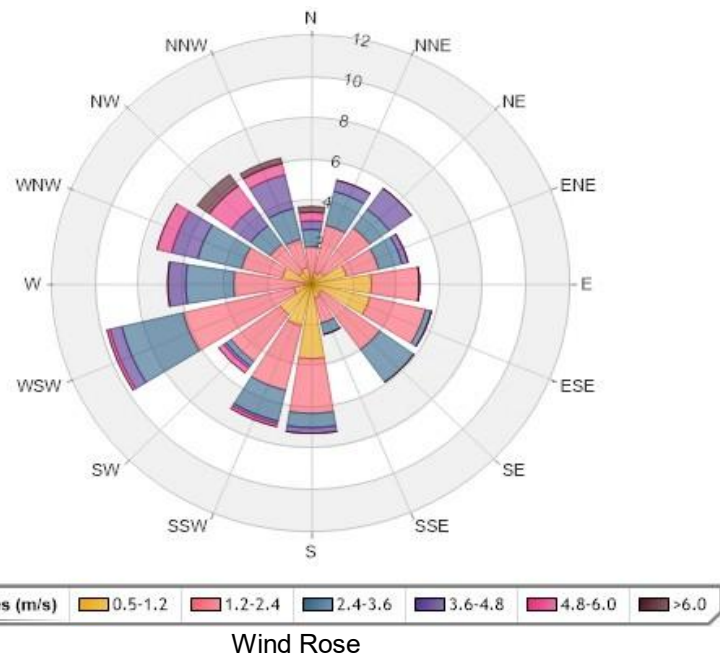


24 Hour Exceedance Summary

Exceedance Information			Summary of other Parameters during Exceedance							
Pollutant	Date	Conc.	WS	WD	Precip.	NO	NO ₂	NO _x	O ₃	PM _{2.5}
PM _{2.5}	6/1/25 12:00 AM	28.1	3.7	259.5	0.0	0.9	2.7	3.6	50.1	28.1
PM _{2.5}	6/9/25 12:00 AM	29.8	2.0	210.6	0.0	2.0	5.4	7.5	39.9	29.8
PM _{2.5}	6/10/25 12:00 AM	90.1	2.4	295.0	0.0	1.2	5.5	6.7	35.3	90.1
PM _{2.5}	6/11/25 12:00 AM	65.8	1.0	174.8	0.0	2.1	8.0	10.0	37.7	65.8
PM _{2.5}	6/12/25 12:00 AM	36.2	1.3	88.7	0.0	1.2	6.4	7.7	41.8	36.2
PM _{2.5}	6/13/25 12:00 AM	29.7	1.9	122.8	0.0	0.9	4.9	5.8	34.5	29.7

1 Hour Exceedance Summary

Exceedance Information			Summary of other Parameters during Exceedance							
Pollutant	Date	Conc.	WS	WD	Precip.	NO	NO ₂	NO _x	O ₃	PM _{2.5}
O ₃	6/12/2025 4:00 PM	85.2	1.6	114.1	0.0	0.9	2.8	3.6	85.2	48.8
O ₃	6/12/2025 5:00 PM	86.6	1.6	127.8	0.0	0.6	3.1	3.7	86.6	49.6
O ₃	6/12/2025 6:00 PM	85.7	1.7	128.0	0.0	0.4	2.6	3.0	85.7	53.1
O ₃	6/12/2025 7:00 PM	83.0	1.8	92.2	0.0	1.1	2.9	4.0	83.0	52.9



Parameters	Unit	Color Code for Wind Speed and Pollutant Conc. Class					
Wind Speed	m/s	0.5 - 1.2	1.2 - 2.4	2.4 - 3.6	3.6 - 4.8	4.8 - 6.0	> 6.0
NO ₂	ppb	0.0-C-4.0	4.0-C-8.0	8.0-C-12.0	12.0-C-16.0	16.0-C-20.0	> 20
O ₃	ppb	0.0-C-10.0	10.0-C-20.0	20.0-C-30.0	30.0-C-40.0	40.0-C-50.0	> 50
PM _{2.5}	µg/m ³	0.0-C-10.0	10.0-C-20.0	20.0-C-30.0	30.0-C-40.0	40.0-C-50.0	> 50

Monthly Update

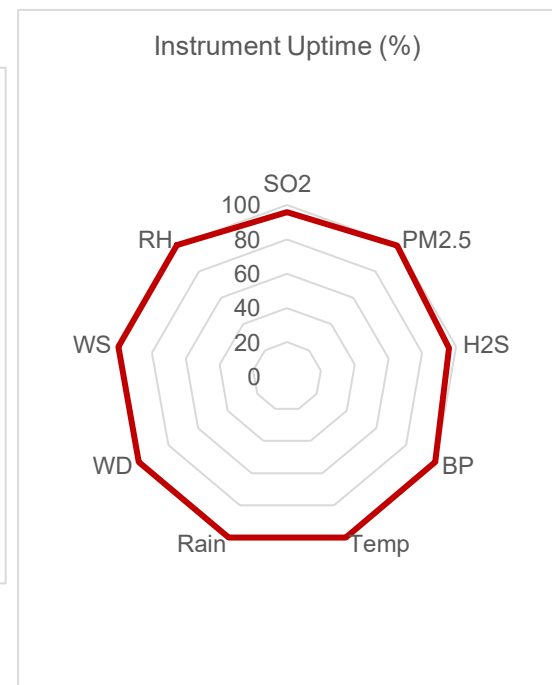
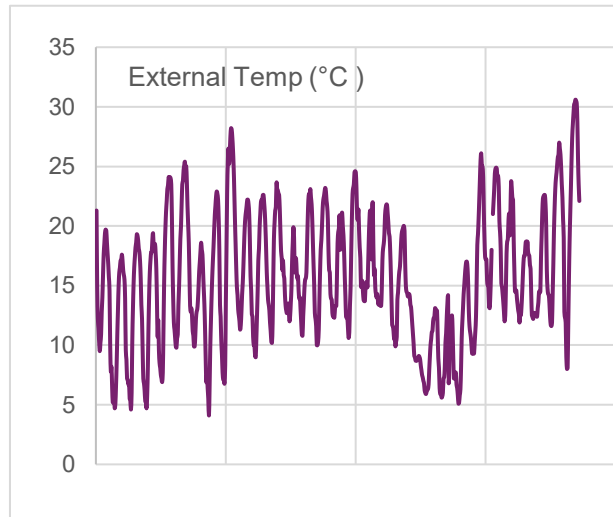
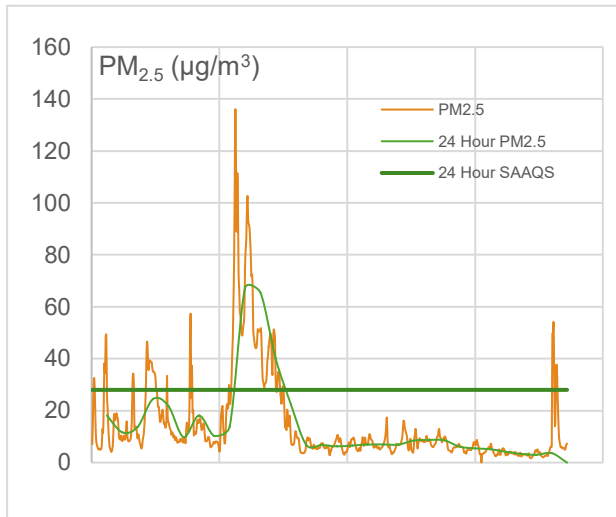
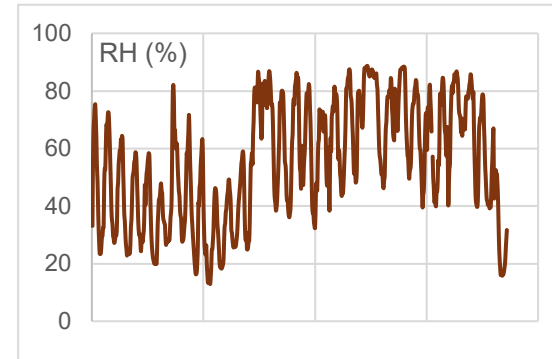
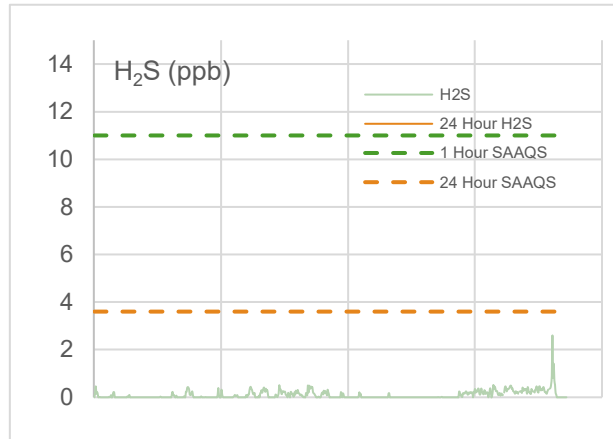
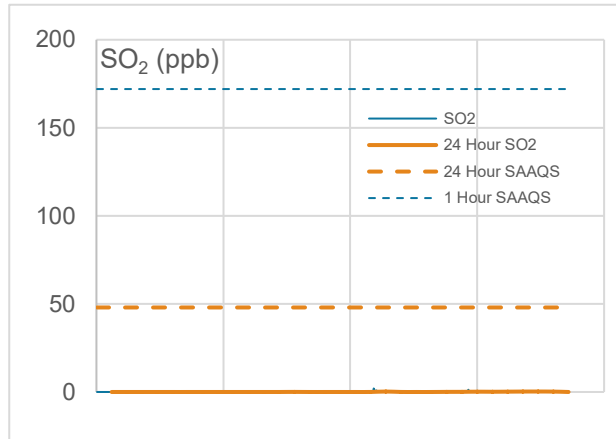
- * All data has been zero drift and baseline corrected, if needed. Data may change after final validation process.
- * All compliance parameters were within the Saskatchewan Ambient Air Quality Standards except for four O₃ hourly exceedances and six PM_{2.5} 24-hours average exceedance most likely attributed to wildfire smoke in the area.
- * All parameters were more than 90% operational for the month.
- * One hour of data were flagged for all gas analyzers due to daily IZS checks, resulting in the loss of one hour of data each day.
- * Quarterly calibrations were completed on May 30, 2025.



WYAMZ Kerrobert Station - June 2025 Summary Report

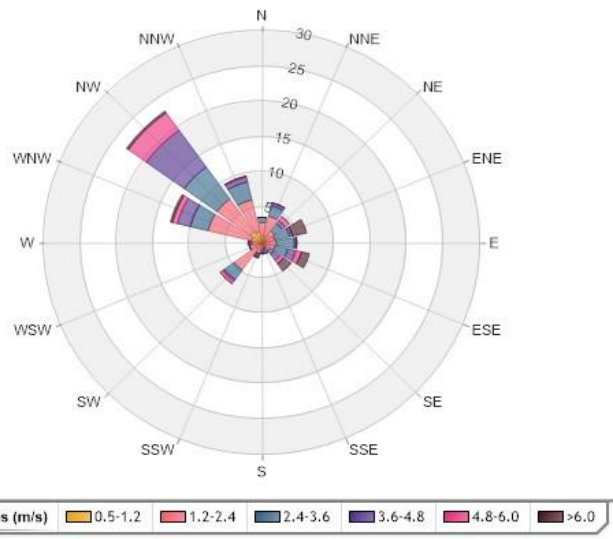
WYAMZ Kerrobert Station - June 2025 Summary Report											
Pollutants		Month Records		24 Hour Records				1 Hour Records			
Name	Unit	Average Concentration	Uptime	Maximum		SAAQS Objective	Exceed Days	Maximum		SAAQS Objective	Exceed Hours
				Conc.	Date			Conc.	Date and Time		
SO ₂	ppb	0.1	95.8%	0.3	29-Jun	48	0	2.0	6/19/2025 5:00 AM	172	0
H ₂ S	ppb	0.1	95.8%	0.3	30-Jun	3.6	0	0.6	7/1/2025 12:00 AM	11	0
PM _{2.5}	µg/m ³	14.6	99.6%	67.2	10-Jun	28	3	136.1	6/10/2025 9:00 AM	-	-

SAAQS: Saskatchewan Ambient Air Quality Standards

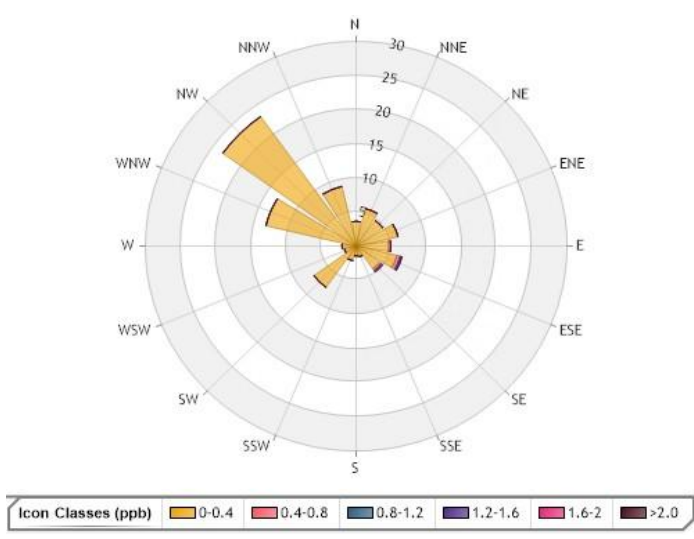


Exceedance Summary								
24-hour Exceedance Information			Summary of other Parameters during Exceedance					
Pollutant	Date	Conc.	WS	WD	Precip.	SO ₂	H ₂ S	PM _{2.5}
PM _{2.5}	10-Jun	67.21	1.61	259.21	0.00	0.00	0.02	67.21
PM _{2.5}	11-Jun	65.57	2.04	72.89	0.00	0.01	0.15	65.57
PM _{2.5}	12-Jun	40.13	3.56	117.77	0.00	0.01	0.13	40.13

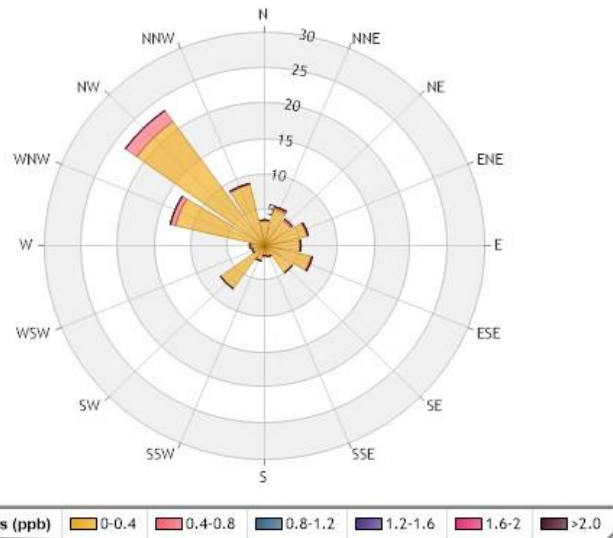
WYAMZ Kerrobert Station - June 2025 Summary Report



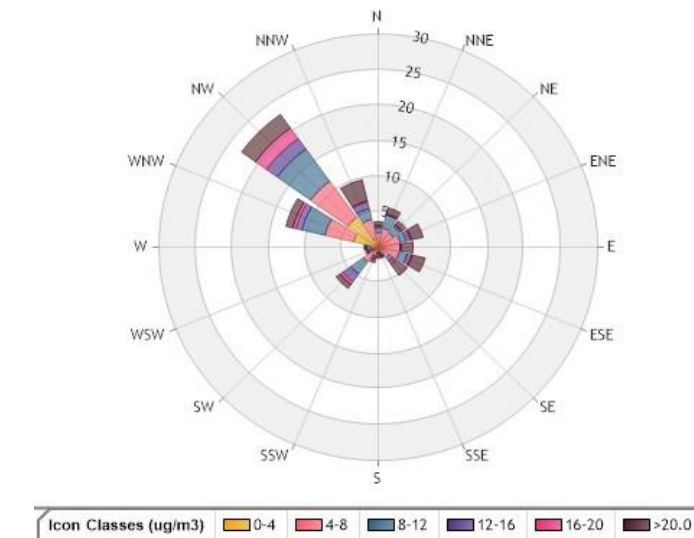
Wind Rose



Pollution Rose SO₂



Pollution Rose H₂S



Pollution Rose PM_{2.5}

Parameters	Unit	Color Code for Wind Speed and Pollutant Conc. Class					
Wind Speed	m/s	0.5-W-1.2	1.2-W- 2.4	2.4-W-3.6	3.6-W-4.8	4.8-W-6.0	> 6.0
SO ₂	ppb	0.0-C-0.4	0.4-C-0.8	0.8-C-1.2	1.2-C-1.6	1.6-C-2.0	C > 2.0
H ₂ S	ppb	0.0-C-0.4	0.4-C-0.8	0.8-C-1.2	1.2-C-1.6	1.6-C-2.0	C > 2.0
PM _{2.5}	µg/m ³	0.0-C-4.0	4.0-C-8.0	8.0-C-12.0	12.0-C-16.0	16.0-C-20.0	C > 20.0

Monthly Update

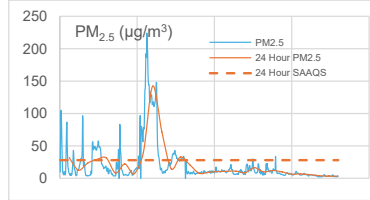
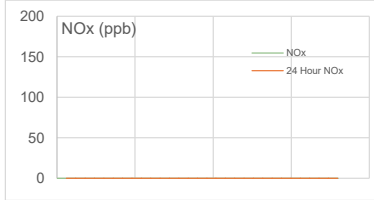
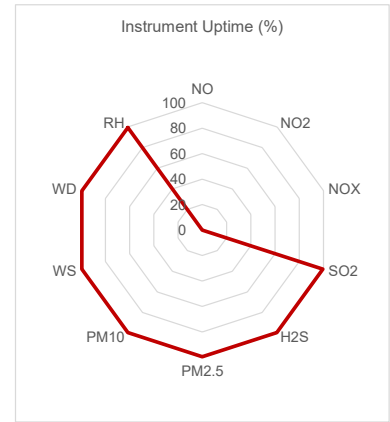
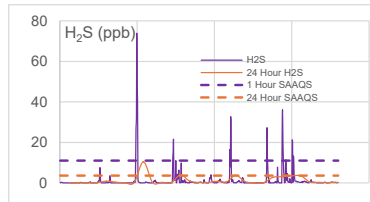
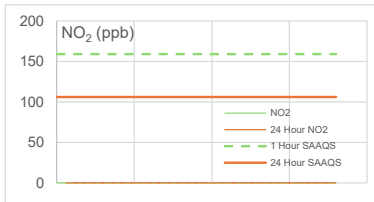
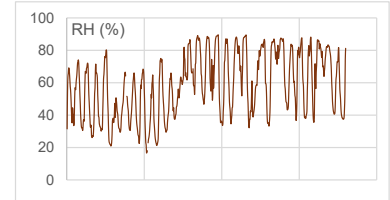
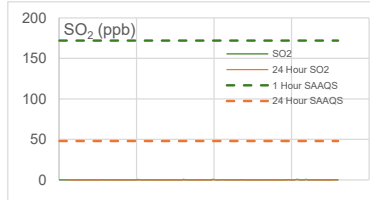
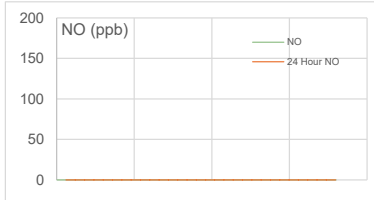
- * All data has been zero drift, and baseline corrected, if needed. Data may change after final validation process.
- * All compliance parameters were within the Saskatchewan Ambient Air Quality Standards with the exception of three PM_{2.5} 24-Hour Exceedances.
- * All compliance parameters were greater than 90% operational for the month.
- * One hour of data were flagged for all gas analyzers due to daily IZS checks, resulting in the loss of one hour of data each day.
- * Quarterly calibrations completed on May 29, 2025.



WYAMZ Maidstone Station - June 2025 Summary Report

Pollutants		Month Records		24 Hour Records				1 Hour Records			
Name	Unit	Average Concentration	Uptime	Maximum		SAAQS Objective	Exceed Days	Maximum		SAAQS Objective	Exceed Hours
				Conc.	Date			Conc.	Date and Time		
NO	ppb	No Data	0.0%	0.00	-	-	-	No Data	-	-	-
NO ₂	ppb	No Data	0.0%	0.00	-	106	0	No Data	-	159	0
NO _x	ppb	No Data	0.0%	0.00	-	-	-	No Data	-	-	-
SO ₂	ppb	0	99.4%	0.3	26-Jun	48	0	0.8	6/17/2025 1:00 PM	172	0
H ₂ S	ppb	1.2	99.4%	10.4	9-Jun	3.6	3	73.9	6/9/2025 7:00 AM	11	23
PM _{2.5}	µg/m ³	20.7	99.4%	142.2	10-Jun	28	7	224.0	6/10/2025 9:00 AM	-	-

SAAQS: Saskatchewan Ambient Air Quality Standards



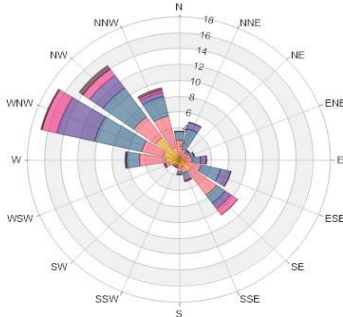
Exceedance Summary

24 - Hour Exceedance Information			Summary of other Parameters during Exceedance								
Pollutant	Date	Conc.	WS	WD	H ₂ S	NO	NO ₂	NO _x	SO ₂	PM _{2.5}	
PM _{2.5}	6/1/2025	32.1	4.3	286.0	0.0	N/A	N/A	N/A	0.0	32.1	
PM _{2.5}	6/4/2025	29.1	1.4	270.2	0.1	N/A	N/A	N/A	0.0	29.1	
PM _{2.5}	6/5/2025	31.5	1.6	171.8	0.9	N/A	N/A	N/A	0.1	31.5	
PM _{2.5}	6/9/2025	39.7	2.5	236.1	10.4	N/A	N/A	N/A	0.1	39.7	
H ₂ S	6/9/2025	10.4	2.5	236.1	10.4	N/A	N/A	N/A	0.1	39.7	
PM _{2.5}	6/10/2025	142.2	2.0	310.2	0.1	N/A	N/A	N/A	0.0	142.2	
PM _{2.5}	6/11/2025	71.4	1.5	266.1	0.3	N/A	N/A	N/A	0.0	71.4	
PM _{2.5}	6/13/2025	32.9	3.5	119.8	4.0	N/A	N/A	N/A	0.0	32.9	
H ₂ S	6/13/2025	4.0	3.5	119.8	4.0	N/A	N/A	N/A	0.0	32.9	
H ₂ S	6/19/2025	3.7	1.3	229.3	3.7	N/A	N/A	N/A	0.0	11.1	

Exceedance Summary (1-Hour Average)

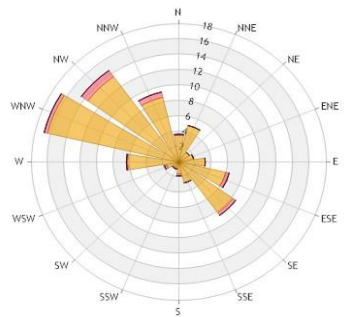
1-hour Exceedance Information			Summary of Other Parameters During Exceedance					
Pollutant	Date /Time	Conc.	WS	WD	Precip.	SO ₂	NO ₂	PM _{2.5}
H ₂ S	6/9/2025 4:00 AM	11.3	1.3	133.1	0.0	0.7	0.0	13.9
H ₂ S	6/9/2025 5:00 AM	27.3	1.8	140.7	0.0	0.5	0.0	15.3
H ₂ S	6/9/2025 6:00 AM	31.9	2.0	123.2	0.0	0.6	0.0	14.8
H ₂ S	6/9/2025 7:00 AM	73.9	2.1	123.7	0.0	0.7	0.0	16.5
H ₂ S	6/9/2025 8:00 AM	47.9	1.8	115.1	0.0	1.0	0.0	16.2
H ₂ S	6/9/2025 9:00 AM	41.1	1.5	112.4	0.0	0.9	0.1	16.6
H ₂ S	6/13/2025 4:00 AM	12.2	2.9	129.5	0.0	1.0	0.0	36.9
H ₂ S	6/13/2025 5:00 AM	15.2	2.4	126.0	0.0	0.9	0.0	38.4
H ₂ S	6/13/2025 6:00 AM	21.6	2.2	119.0	0.0	1.0	0.0	37.7
H ₂ S	6/19/2025 8:00 AM	16.5	1.7	93.7	0.0	1.0	0.0	15.9
H ₂ S	6/19/2025 10:00 AM	32.7	0.2	90.7	0.0	0.8	0.0	21.2
H ₂ S	6/19/2025 11:00 AM	21.3	0.6	239.0	0.4	0.8	0.0	21
H ₂ S	6/23/2025 8:00 AM	27.3	1.6	138.5	0.0	0.9	0.0	23
H ₂ S	6/23/2025 9:00 AM	12.9	2.2	114.8	0.0	0.9	0.0	18.2
H ₂ S	6/24/2025 11:00 PM	24.3	1.8	125.9	0.0	0.7	0.0	5.7
H ₂ S	6/25/2025 12:00 AM	36.1	1.6	124.7	0.0	0.8	0.0	5.3
H ₂ S	6/25/2025 1:00 AM	21.4	1.5	131.2	0.0	2.1	0.0	5.2
H ₂ S	6/25/2025 2:00 AM	12.8	1.4	134.1	0.0	2.2	0.0	5.4
H ₂ S	6/25/2025 9:00 AM	11.4	3.7	125.0	0.0	1.2	0.0	6.8
H ₂ S	6/26/2025 1:00 AM	21.3	2.2	126.3	0.0	1.2	0.0	5.3
H ₂ S	6/26/2025 2:00 AM	20.5	2.3	137.0	0.0	1.8	0.0	5.2
H ₂ S	6/26/2025 4:00 AM	13.3	1.1	132.2	0.0	0.9	0.0	5.7
H ₂ S	6/26/2025 5:00 AM	12.1	0.5	155.9	0.0	0.8	0.0	5.6

WYAMZ Maidstone Station - June 2025 Summary Report



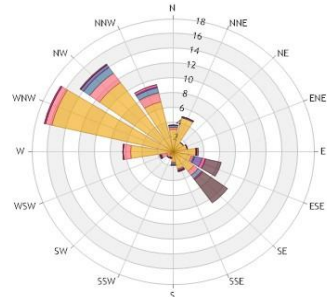
Icon Classes (m/s) 0.5-1.2 1.2-2.4 2.4-3.6 3.6-4.8 4.8-6.0 >6.0

Wind Rose



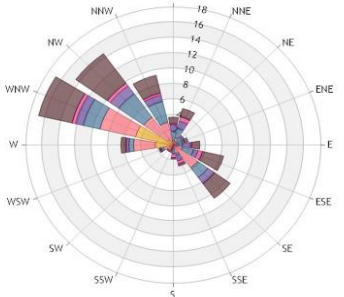
Icon Classes (ppb) 0-0.4 0.4-0.8 0.8-1.2 1.2-1.6 1.6-2 >2.0

Pollution Rose SO₂



Icon Classes (ppb) 0-0.4 0.4-0.8 0.8-1.2 1.2-1.6 1.6-2 >2.0

Pollution Rose H₂S



Icon Classes (ug/m³) 0-4 4-8 8-12 12-16 16-20 >20.0

Pollution Rose PM_{2.5}

Parameters	Unit	Color Code for Wind Speed and Pollutant Conc. Class					
Wind Speed	m/s	0.5 - 1.2	1.2 - 2.4	2.4 - 3.6	3.6 - 4.8	4.8 - 6.0	WS > 6.0
SO ₂	ppb	0.0-C-0.4	0.4-C-0.8	0.8-C-1.2	1.2-C-1.6	1.6-C-2.0	C > 2.0
H ₂ S	ppb	0.0-C-0.4	0.4-C-0.8	0.8-C-1.2	1.2-C-1.6	1.6-C-2.0	C > 2.0
PM _{2.5}	ug/m ³	0.0-C-4.0	4.0-C-8.0	8.0-C-12.0	12.0-C-16.0	16.0-C-20.0	C > 20.0

Monthly Update

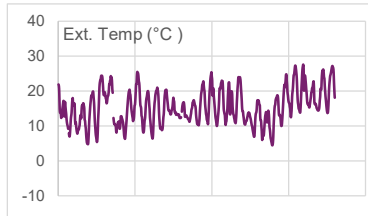
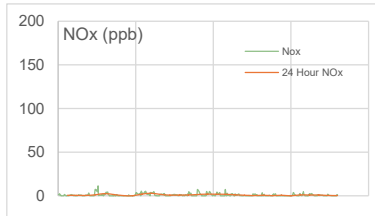
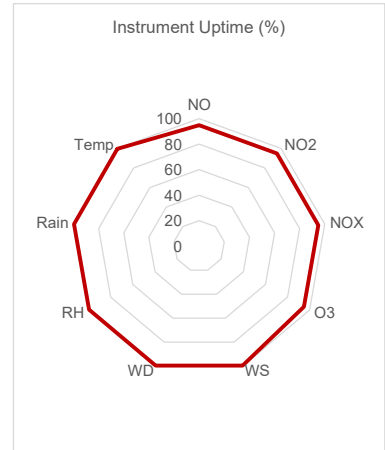
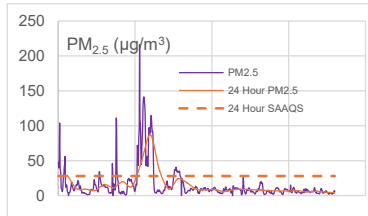
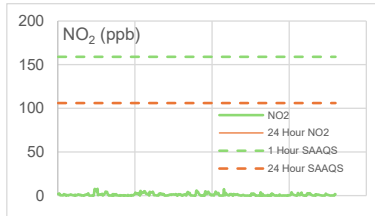
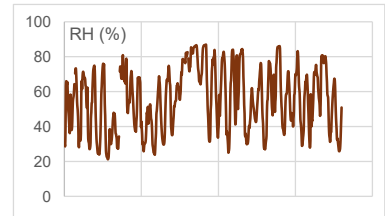
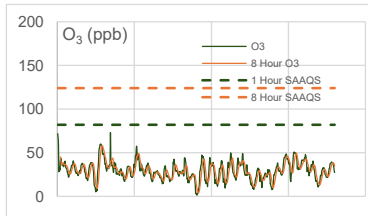
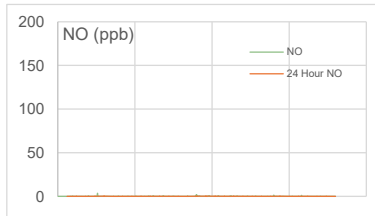
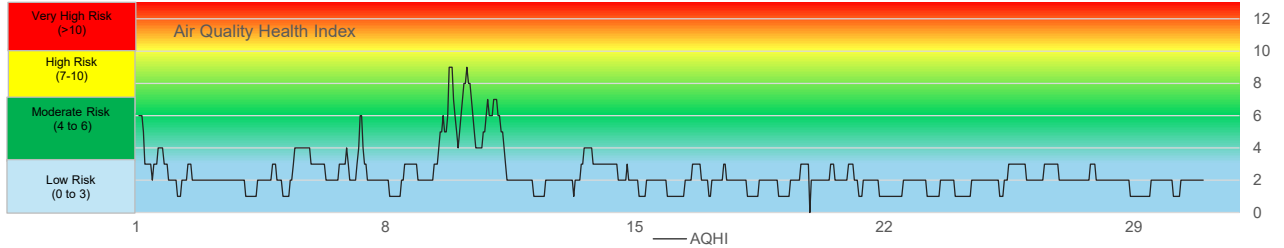
- * All data has been zero drift, and baseline corrected, if needed. Data may change after final validation process.
- * All compliance parameters were within the Saskatchewan Ambient Air Quality Standards except for three 24-hour H₂S exceedances, seven 24-hour PM_{2.5} exceedances, and 23 one-hour H₂S exceedances.
- * All compliance gas parameters were less than 90% operational for the month with the exception of NOx gas analyzer.
- * The NO₂ analyzer was removed on December 17, 2024 for service and maintenance.
- * The shelter temperature fluctuated significantly between 19°C and 44°C during the monitoring period, indicating a malfunction in the HVAC system. These extreme temperature variations likely affected sensor stability, potentially causing the observed H₂S exceedances. As a result, all data from this period have been flagged as questionable and are provided here for reference purposes only, as they may not reflect actual ambient conditions.
- * The internal daily IZS checks for the H₂S and SO₂ analyzers are currently malfunctioning, resulting in the data acquisition system not receiving daily calibration data.
- * Quarterly calibrations were completed on May 28, 2025.



WYAMZ Meadow Lake Station - June 2025 Summary Report

Pollutants		Month Records		24 Hour Records				1 Hour Records			
Name	Unit	Average Concentration	Uptime	Maximum		SAAQS Objective*	Exceed Days	Maximum		SAAQS Objective	Exceed Hours
				Conc.	Date			Conc.	Date and Time		
NO	ppb	0.1	94.9%	0.2	16-Jun	-	-	3.6	6/5/2025 7:00 AM	-	-
NO ₂	ppb	1.1	94.9%	3.1	10-Jun	106	0	7.8	6/5/2025 7:00 AM	159	0
NO _x	ppb	1	94.9%	2.9	10-Jun	-	-	11.4	6/5/2025 7:00 AM	-	-
O ₃	ppb	29.3	94.9%	58.2	5-Jun	124 (8 hours)	0	73.0	6/6/2025 6:00 PM	82	0
PM _{2.5}	µg/m ³	15	99.4%	87.1	10-Jun	28	4	216.2	6/9/2025 8:00 PM	-	-

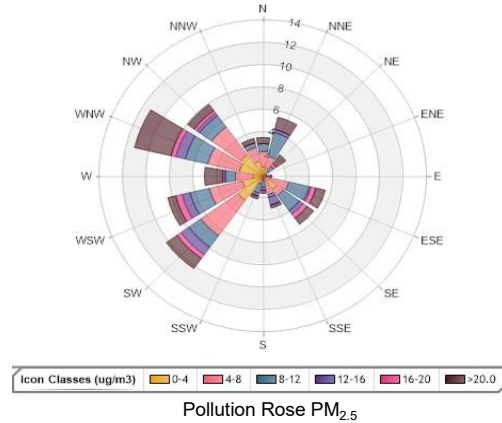
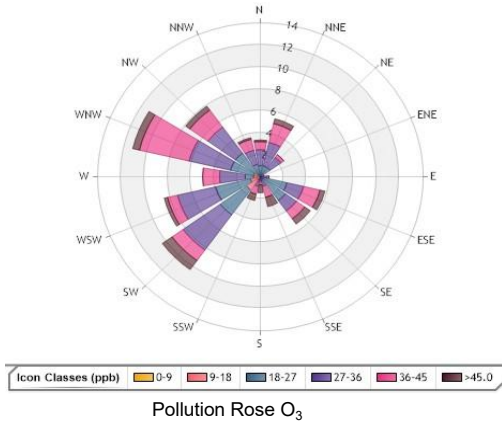
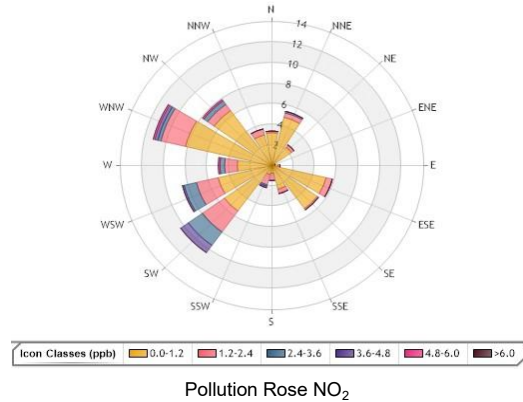
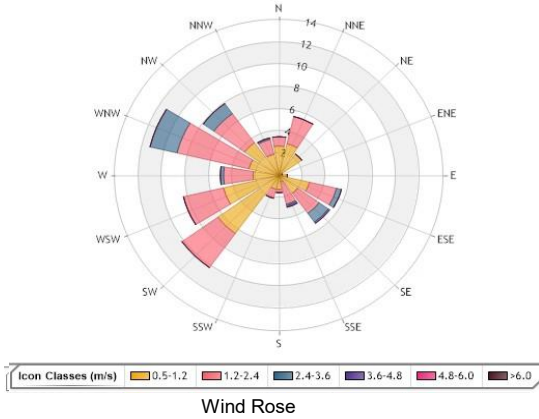
SAAQS: Saskatchewan Ambient Air Quality Standards



Exceedance Summary

24-hour Exceedance Information			Summary of other Parameters during Exceedance							
Pollutant	Date	Conc.	WS	WD	Precip.	NO	NO ₂	NO _x	O ₃	PM _{2.5}
PM _{2.5}	1-Jun	29.1	2.3	263.8	0.0	0.0	0.9	0.6	39.7	29.1
PM _{2.5}	9-Jun	47.2	1.3	194.7	0.0	0.0	2.1	1.9	37.5	47.2
PM _{2.5}	10-Jun	87.1	1.2	264.7	0.0	0.0	3.1	2.9	30.8	87.1
PM _{2.5}	11-Jun	35.7	0.8	224.2	0.0	0.1	1.7	1.6	24.5	35.7

WYAMZ Meadow Lake Station - June 2025 Summary Report



Parameters	Unit	Color Code for Wind Speed and Pollutant Conc. Class						
Wind Speed	m/s	0.5-W-1.2	1.2-W-2.4	2.4-W-3.6	3.6-W-4.8	4.8-W-6.0	W > 6.0	
NO ₂	ppb	0.0-C-1.2	1.2-C-2.4	2.4-C-3.6	3.6-C-4.8	4.8-C-6.0	C > 6.0	
O ₃	ppb	0.0-C-9.0	9.0-C-18.0	18.0-C-27.0	27.0-C-36.0	36.0-C-45.0	C > 45.0	
PM _{2.5}	µg/m ³	0.0-C-4.0	4.0-C-8.0	8.0-C-12.0	12.0-C-16.0	16.0-C-20.0	C > 20.0	

Monthly Update

- * All data has been zero drift, and baseline corrected, if needed. Data may change after final validation process.
- * All compliance parameters were within the Saskatchewan Ambient Air Quality Standards except for four 24-hour PM_{2.5} exceedances attributed to wildfire smoke in the area.
- * All compliance parameters were more than 90% operational for the month.
- * One hour of data was flagged for all gas analyzers due to daily IZS checks, resulting in the loss of one hour of data each day.
- * Quarterly calibrations were completed on May 27, 2025.

