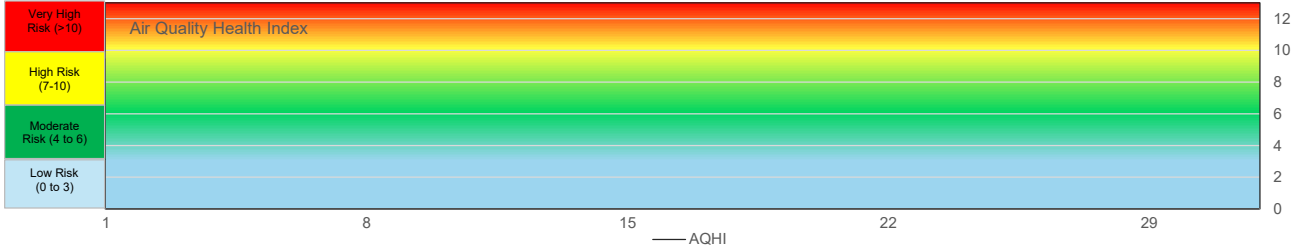


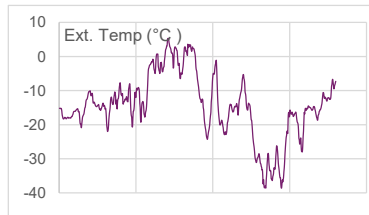
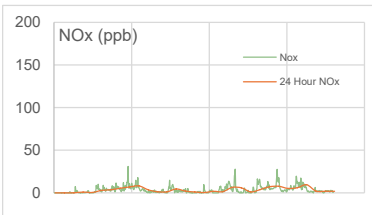
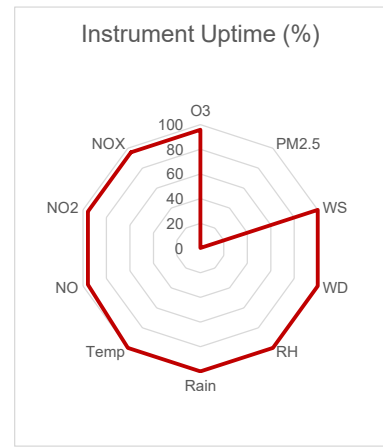
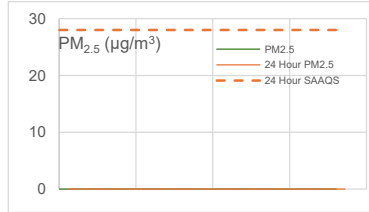
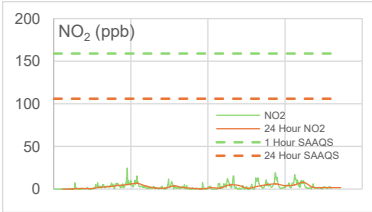
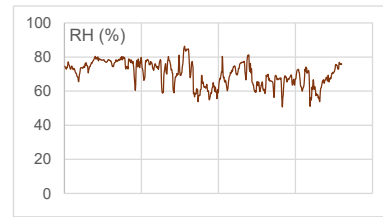
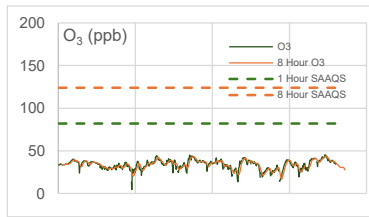
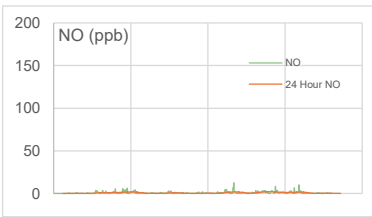
WYAMZ Clavet Station - January 2026 Summary Report

Pollutants		Month Records		24 Hour Records				1 Hour Records			
Name	Unit	Average Concentration	Uptime	Maximum		SAAQS Objective	Exceed Days	Maximum		SAAQS Objective	Exceed Hours
				Conc.	Date			Conc.	Date and Time		
NO	ppb	0.7	95.8%	2.05	23-Jan	-	-	12.5	01/20/2026 11:00	-	-
NO ₂	ppb	2.8	95.8%	7.94	27-Jan	106	0	24.7	01/08/2026 23:00	159	0
NO _x	ppb	3.4	95.8%	9.53	27-Jan	-	-	31	01/08/2026 23:00	-	0
O ₃	ppb	33.6	95.8%	43.69	30-Jan	124 (8 hours)	0	45.3	01/29/2026 20:00	82	0
PM _{2.5}	µg/m ³	No Data	0.0%	0.00	-	28	0	No Data	-	-	-

SAAQS: Saskatchewan Ambient Air Quality Standards



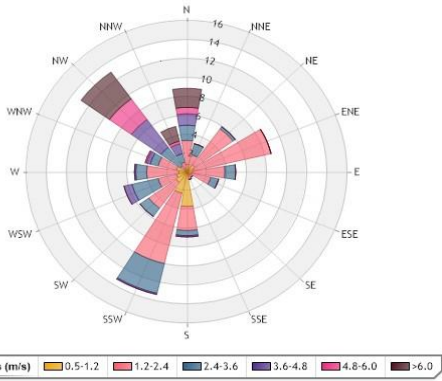
*If AQHI cannot be calculated due to missing parameters, AQHI plus is reported using PM_{2.5}



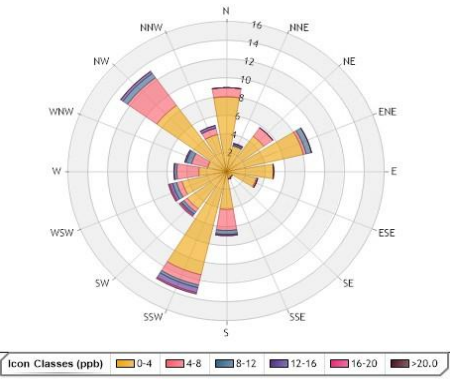
24 Hour Exceedance Summary										
Exceedance Information			Summary of other Parameters during Exceedance							
Pollutant	Date	Conc.	WS	WD	Precip.	NO	NO ₂	NO _x	O ₃	PM _{2.5}

1 Hour Exceedance Summary										
Exceedance Information			Summary of other Parameters during Exceedance							
Pollutant	Date	Conc.	WS	WD	Precip.	NO	NO ₂	NO _x	O ₃	PM _{2.5}

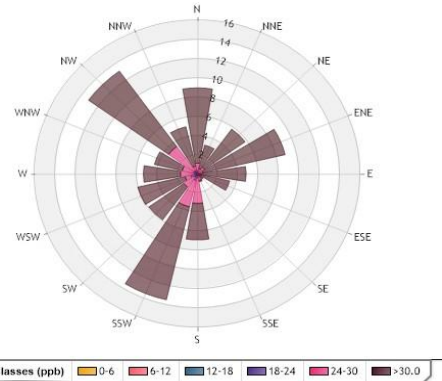
WYAMZ Clavet Station - January 2026 Summary Report



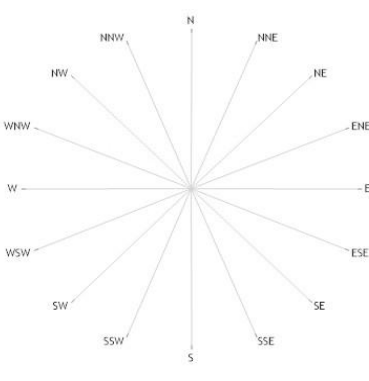
Wind Rose



Pollution Rose NO₂



Pollution Rose O₃



Pollution Rose PM_{2.5}

Parameters	Unit	Color Code for Wind Speed and Pollutant Conc. Class						
Wind Speed	m/s	0.5 - 1.2	1.2 - 2.4	2.4 - 3.6	3.6 - 4.8	4.8 - 6.0	> 6.0	
NO ₂	ppb	0.0-C-4.0	4.0-C-8.0	8.0-C-12.0	12.0-C-16.0	16.0-C-20.0	> 20	
O ₃	ppb	0.0-C-6.0	6.0-C-12.0	12.0-C-18.0	18.0-C-24.0	20.0-C-30.0	> 30	
PM _{2.5}	µg/m ³	N/A	N/A	N/A	N/A	N/A	N/A	

Monthly Update

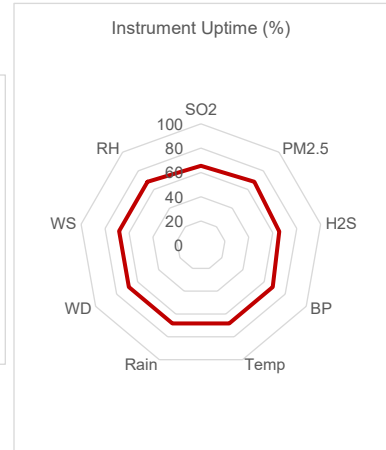
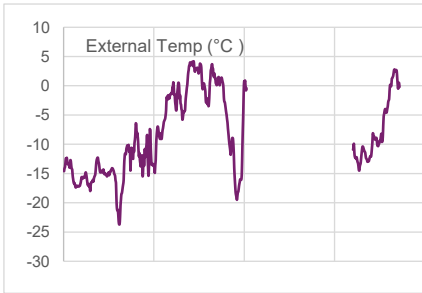
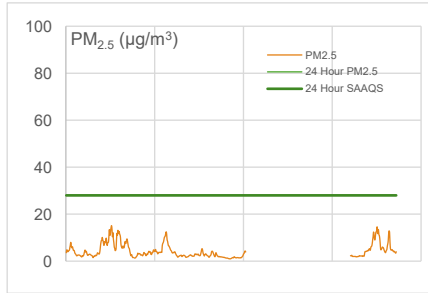
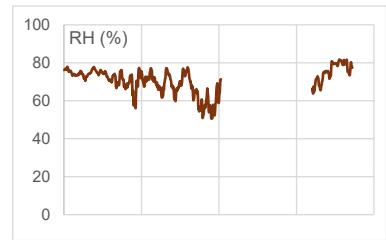
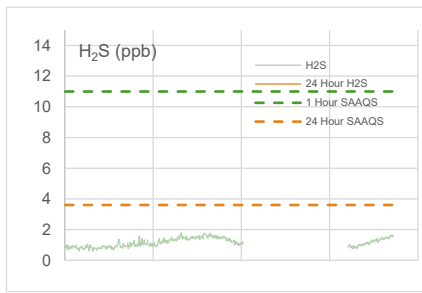
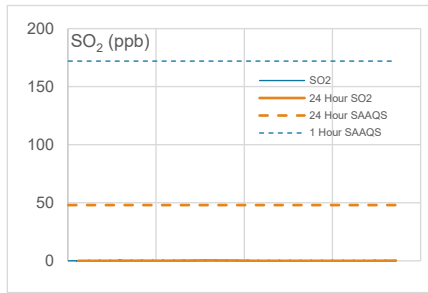
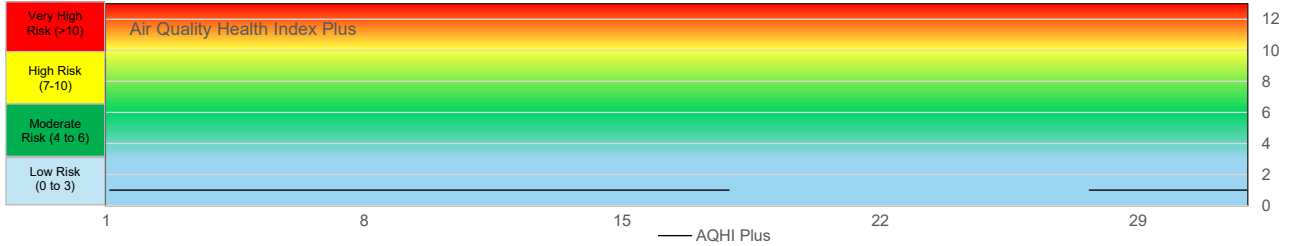
- * All data has been zero drift and baseline corrected, when required. Data may change after final validation process.
- * All compliance parameters were within the Saskatchewan Ambient Air Quality Standards.
- * All parameters were greater than 90% operational for the month with the exception of PM_{2.5}.
- * The NOx permeation tube is depleted and is not included in the daily span or monthly data validation process.
- * A total of 744 hours of PM_{2.5} data not available due to analyzer error.
- * One hour of data were flagged for all gas analyzers due to daily LZS checks, resulting in the loss of one hour of data each day.
- * Quarterly calibrations were completed on December 11, 2025.



WYAMZ Kerrobert Station - January 2026 Summary Report

Pollutants		Month Records		24 Hour Records				1 Hour Records			
Name	Unit	Average Concentration	Uptime	Maximum		SAQS Objective	Exceed Days	Maximum		SAQS Objective	Exceed Hours
				Conc.	Date			Conc.	Date and Time		
SO ₂	ppb	0.1	65.5%	0.3	13-Jan	48	0	1.1	01/05/2026 22:00	172	0
H ₂ S	ppb	1.2	65.5%	1.6	14-Jan	3.6	0	1.8	01/11/2026 24:00	11	0
PM _{2.5}	µg/m ³	4.3	68.3%	10.4	5-Jan	28	0	15.1	01/05/2026 07:00	-	-

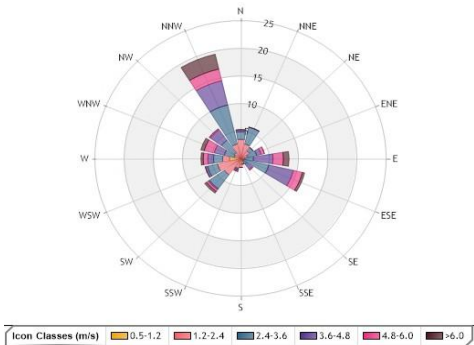
SAQS: Saskatchewan Ambient Air Quality Standards



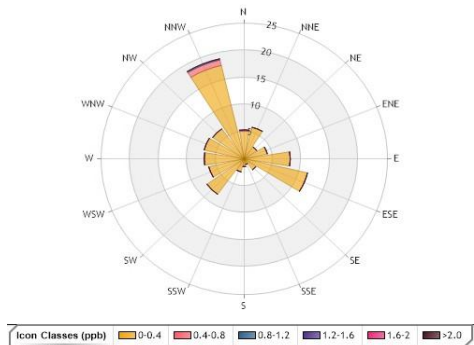
Exceedance Summary

24-hour Exceedance Information			Summary of other Parameters during Exceedance					
Pollutant	Date	Conc.	WS	WD	Precip.	SO ₂	H ₂ S	PM _{2.5}

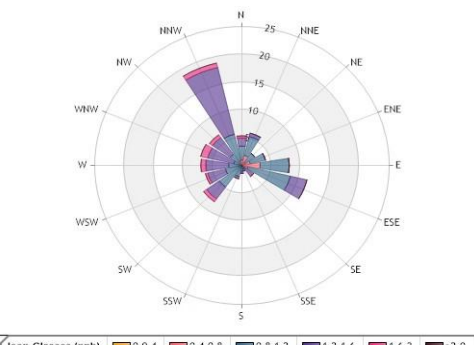
WYAMZ Kerrobert Station - January 2026 Summary Report



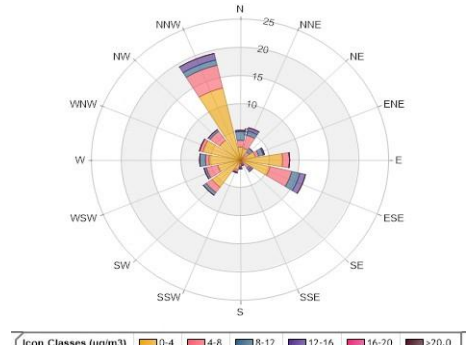
Wind Rose



Pollution Rose SO₂



Pollution Rose H₂S



Pollution Rose PM_{2.5}

Parameters	Unit	Color Code for Wind Speed and Pollutant Conc. Class						
Wind Speed	m/s	0.5-W-1.2	1.2-W- 2.4	2.4-W-3.6	3.6-W-4.8	4.8-W-6.0	> 6.0	
SO ₂	ppb	0.0-C-0.4	0.4-C-0.8	0.8-C-1.2	1.2-C-1.6	1.6-C-2.0	C > 2.0	
H ₂ S	ppb	0.0-C-0.4	0.4-C-0.8	0.8-C-1.2	1.2-C-1.6	1.6-C-2.0	C > 2.0	
PM _{2.5}	µg/m ³	0.0-C-4.0	4.0-C-8.0	8.0-C-12.0	12.0-C-16.0	16.0-C-20.0	C > 20.0	

Monthly Update

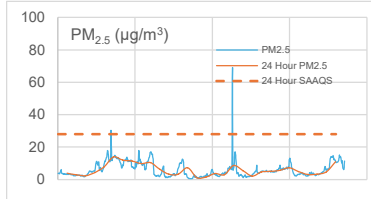
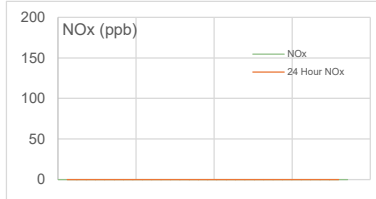
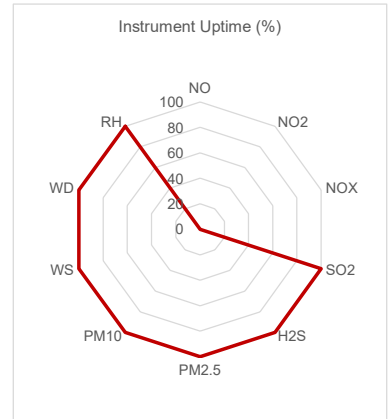
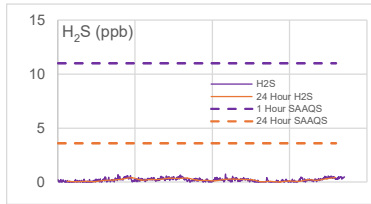
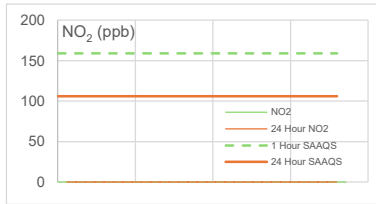
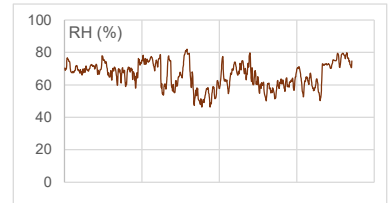
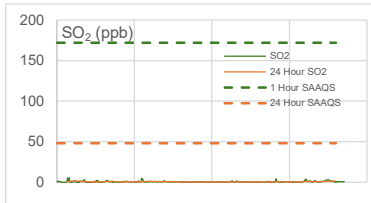
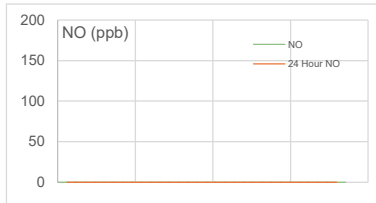
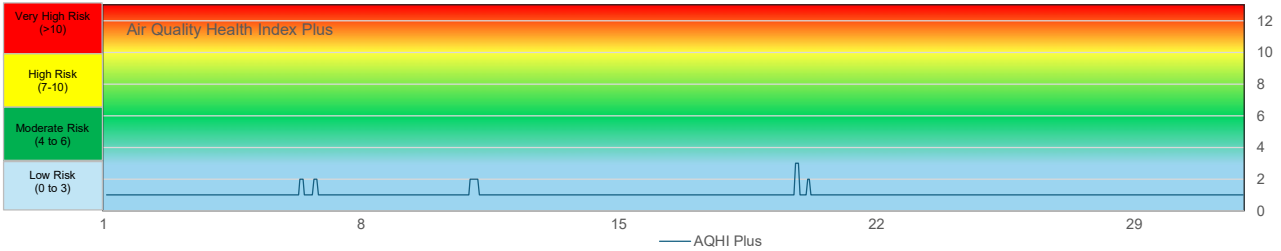
- * All data has been zero drift, and baseline corrected, when required. Data may change after final validation process.
- * All compliance parameters were within the Saskatchewan Ambient Air Quality Standards.
- * All compliance parameters were less than 90% operational for the month.
- * The SO₂ permeation tube is depleted and is not included in the daily span or monthly data validation process.
- * Approximately 230 hours of SO₂ data flagged due to system error.
- * A total of 230 hours of H₂S data unavailable due to system error.
- * A total of 240 hours of PM_{2.5} data unavailable due to system error
- * One hour of data were flagged for all gas analyzers due to daily IZS checks, resulting in the loss of one hour of data each day.
- * Quarterly calibrations completed on December 10, 2025.



WYAMZ Maidstone Station - January 2026 Summary Report

Pollutants		Month Records		24 Hour Records				1 Hour Records			
Name	Unit	Average Concentration	Uptime	Maximum		SAAQS Objective	Exceed Days	Maximum		SAAQS Objective	Exceed Hours
				Conc.	Date			Conc.	Date and Time		
NO	ppb	No Data	0.0%	0.00	-	-	-	No Data	-	-	-
NO ₂	ppb	No Data	0.0%	0.00	-	106	0	No Data	-	159	0
NO _x	ppb	No Data	0.0%	0.00	-	-	-	No Data	-	-	-
SO ₂	ppb	0.5	100.0%	1.5	30-Jan	48	0	5.5	01/02/2026 08:00	172	0
H ₂ S	ppb	0.2	100.0%	0.4	30-Jan	3.6	0	0.7	01/19/2026 02:00	11	0
PM _{2.5}	µg/m ³	6.0	100.0%	13.9	6-Jan	28	0	69.0	01/19/2026 20:00	-	-

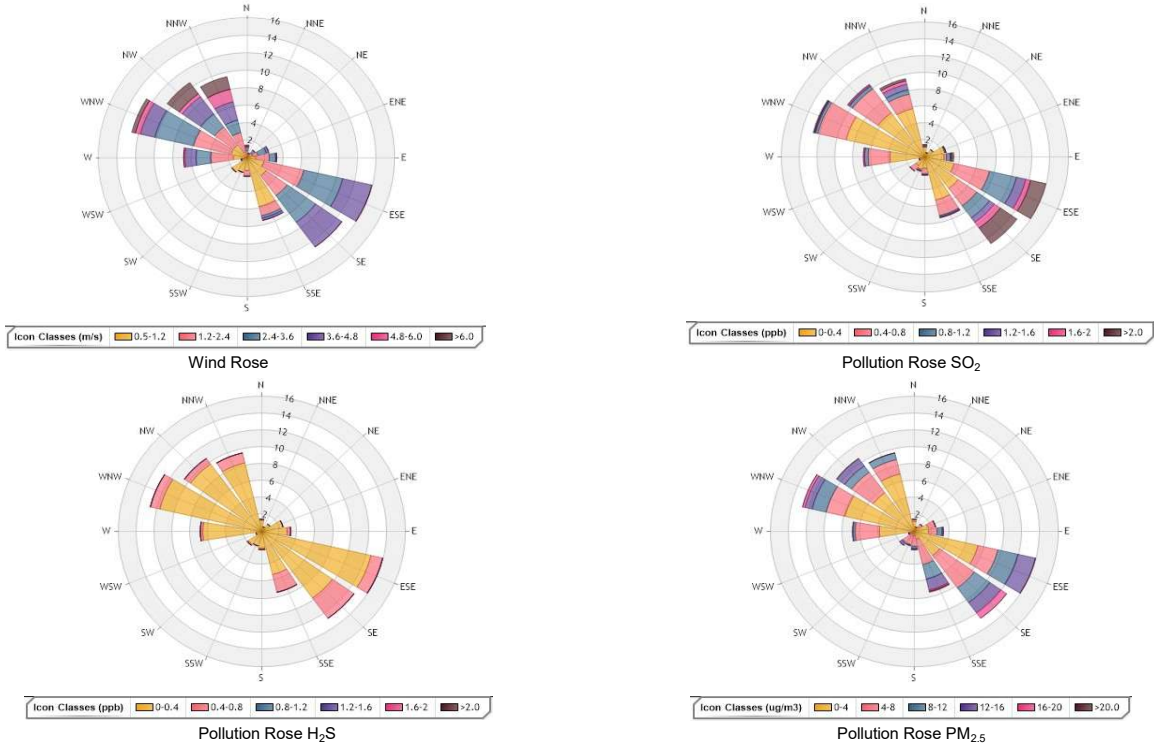
SAAQS: Saskatchewan Ambient Air Quality Standards



24 - Hour Exceedance Information			Summary of other Parameters during Exceedance							
Pollutant	Date	Conc.	WS	WD	H ₂ S	NO	NO ₂	NO _x	SO ₂	PM _{2.5}

1-hour Exceedance Information			Summary of Other Parameters During Exceedance					
Pollutant	Date /Time	Conc.	WS	WD	Precip.	SO ₂	NO ₂	PM _{2.5}

WYAMZ Maidstone Station - January 2026 Summary Report



Parameters	Unit	Color Code for Wind Speed and Pollutant Conc. Class					
Wind Speed	m/s	0.5 - 1.2	1.2 - 2.4	2.4 - 3.6	3.6 - 4.8	4.8 - 6.0	WS > 6.0
SO ₂	ppb	0.0-C-0.4	0.4-C-0.8	0.8-C-1.2	1.2-C-1.6	1.6-C-2.0	C > 2.0
H ₂ S	ppb	0.0-C-0.4	0.4-C-0.8	0.8-C-1.2	1.2-C-1.6	1.6-C-2.0	C > 2.0
PM _{2.5}	µg/m ³	0.0-C-4.0	4.0-C-8.0	8.0-C-12.0	12.0-C-16.0	16.0-C-20.0	C > 20.0

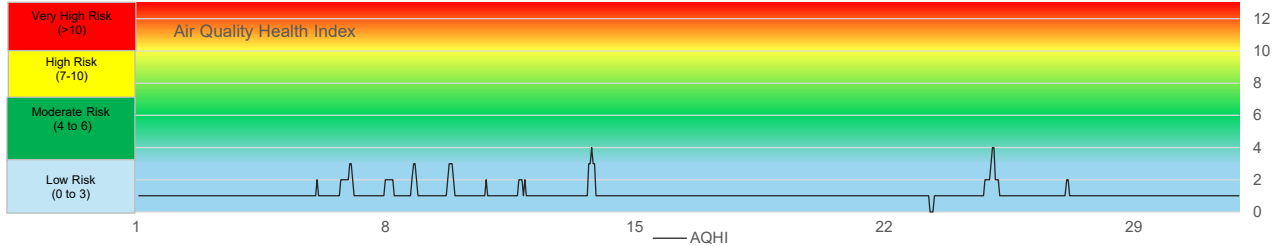
* All data has been zero drift, and baseline corrected, when required. Data may change after final validation process.
 * All compliance parameters were within the Saskatchewan Ambient Air Quality Standards.
 * All compliance parameters were greater than 90% operational for the month with the exception of the NO_x analyzer.
 * The NO₂ analyzer was removed on December 17, 2024 for service and maintenance.
 * The internal daily IZS checks for the H₂S and SO₂ analyzers are not working, resulting in the data acquisition system not receiving daily calibration data and it is not part of the validation process.
 * Quarterly calibrations completed on December 9 and 10, 2025.



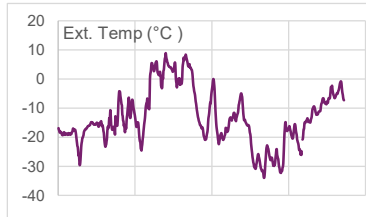
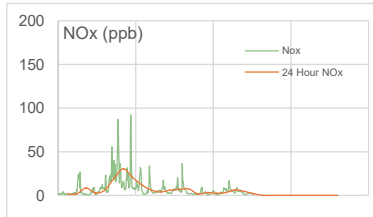
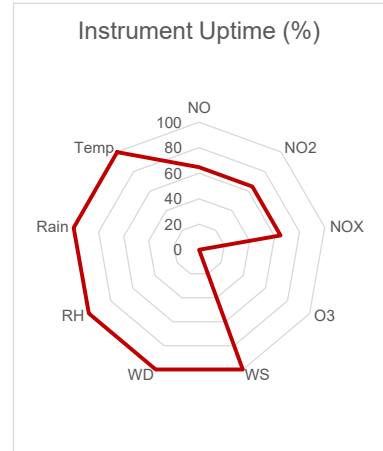
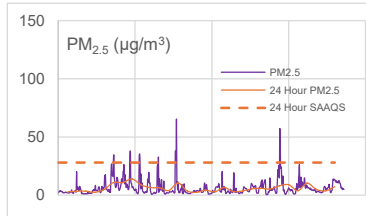
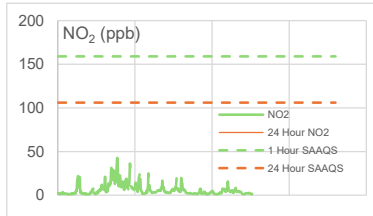
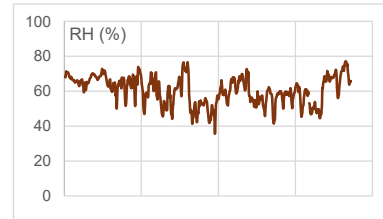
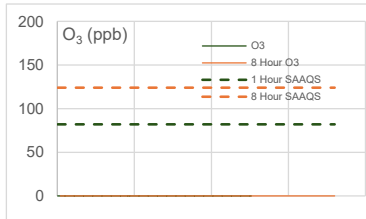
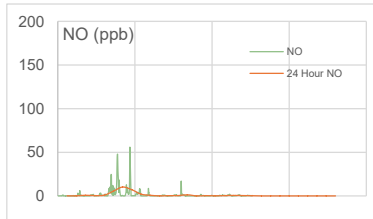
WYAMZ Meadow Lake Station - January 2026 Summary Report

Pollutants		Month Records		24 Hour Records				1 Hour Records			
Name	Unit	Average Concentration	Uptime	Maximum		SAAQS Objective*	Exceed Days	Maximum		SAAQS Objective	Exceed Hours
				Conc.	Date			Conc.	Date and Time		
NO	ppb	1.5	64.8%	10.2	7-Jan	-	-	55.9	01/08/2026 19:00	-	-
NO ₂	ppb	6.0	64.8%	20.2	7-Jan	106	0	42.7	01/07/2026 10:00	159	0
NO _x	ppb	7.4	64.8%	30.4	7-Jan	-	-	92.3	01/08/2026 19:00	-	-
O ₃	ppb	No Data	0.0%	0.0	-	124 (8 hours)	0	No Data	-	82	0
PM _{2.5}	µg/m ³	6.0	98.8%	13.9	8-Jan	28	0	65.4	01/13/2026 20:00	-	-

SAAQS: Saskatchewan Ambient Air Quality Standards

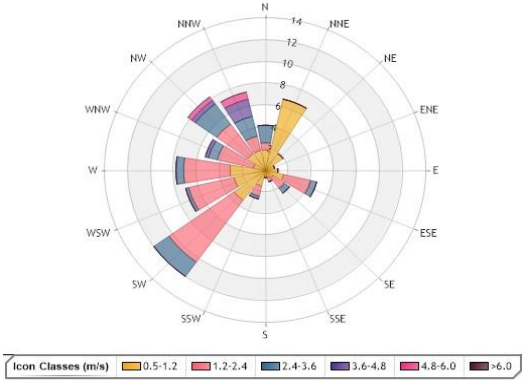


*If AQHI cannot be calculated due to missing parameters, AQHI plus is reported using PM_{2.5}

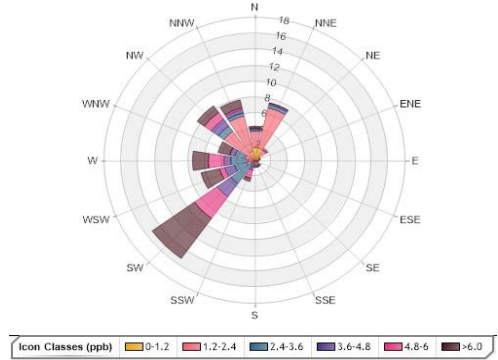


Exceedance Summary										
24-hour Exceedance Information			Summary of other Parameters during Exceedance							
Pollutant	Date	Conc.	WS	WD	Precip.	NO	NO ₂	NO _x	O ₃	PM _{2.5}

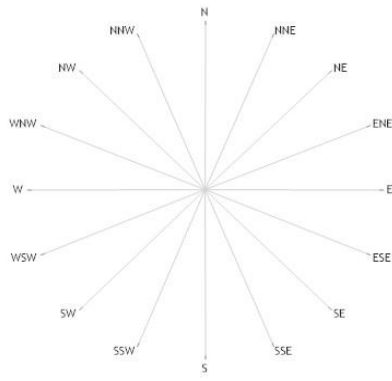
WYAMZ Meadow Lake Station - January 2026 Summary Report



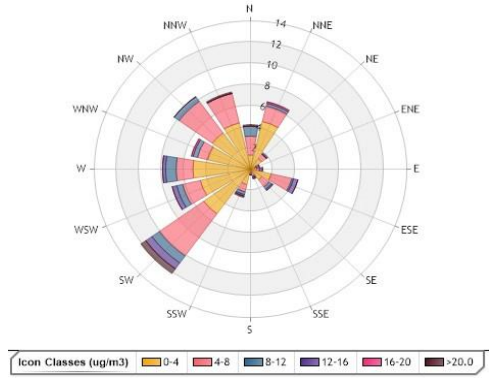
Wind Rose



Pollution Rose NO₂



Pollution Rose O₃



Pollution Rose PM_{2.5}

Parameters	Unit	Color Code for Wind Speed and Pollutant Conc. Class						
Wind Speed	m/s	0.5-W-1.2	1.2-W-2.4	2.4-W-3.6	3.6-W-4.8	4.8-W-6.0	W > 6.0	
NO ₂	ppb	0.0-C-1.2	1.2-C-2.4	2.4-C-3.6	3.6-C-4.8	4.8-C-6.0	C > 6.0	
O ₃	ppb	0.0-C-9.0	9.0-C-18.0	18.0-C-27.0	27.0-C-36.0	36.0-C-45.0	C > 45.0	
PM _{2.5}	µg/m ³	0.0-C-4.0	4.0-C-8.0	8.0-C-12.0	12.0-C-16.0	16.0-C-20.0	C > 20.0	

Monthly Update

- * All data has been zero drift, and baseline corrected, if needed. Data may change after final validation process.
- * All compliance parameters were within the Saskatchewan Ambient Air Quality Standards.
- * All compliance parameters less than 90% operational for the month with the exception of PM_{2.5}.
- * O₃ analyzer removed on December 9, 2025 for repair.
- * A total of 262 hours of NO₂ data unavailable due to analyzer error.
- * Internal zero air checks for NO₂ were unstable during the reporting period and will require further investigation and verification.
- * One hour of data was flagged for all gas analyzers due to daily IZS checks, resulting in the loss of one hour of data each day.
- * Quarterly calibrations were completed on December 9, 2025.

