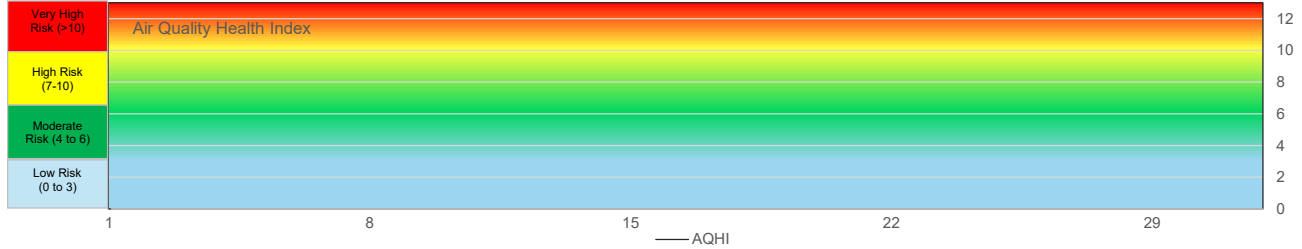


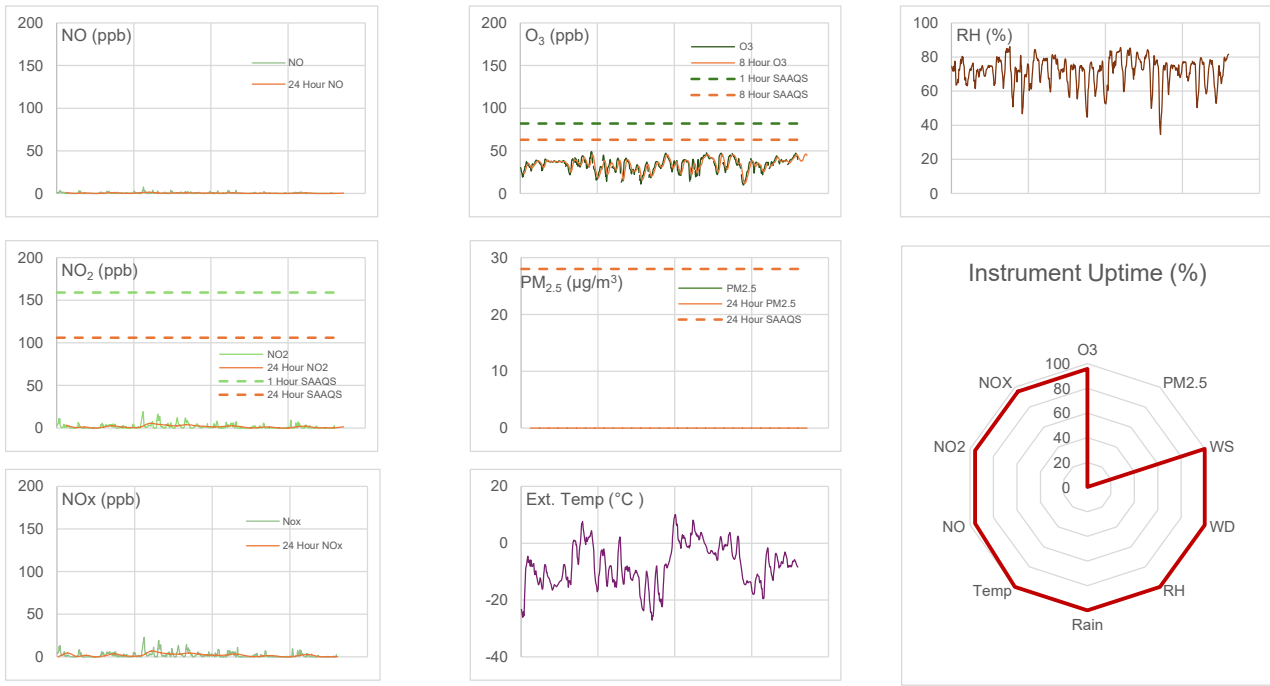
# WYAMZ Clavet Station - March 2026 Summary Report

Pollutants		Month Records		24 Hour Records				1 Hour Records			
Name	Unit	Average Concentration	Uptime	Maximum		SAAQS Objective	Exceed Days	Maximum		SAAQS Objective	Exceed Hours
				Conc.	Date			Conc.	Date and Time		
NO	ppb	0.4	95.7%	1.47	10-Mar	-	-	7.6	03/10/2026 09:00	-	-
NO <sub>2</sub>	ppb	1.7	95.7%	5.48	10-Mar	106	0	19.3	03/10/2026 08:00	159	0
NO <sub>x</sub>	ppb	2	95.7%	6.83	10-Mar	-	-	22.8	03/10/2026 09:00	-	-
O <sub>3</sub>	ppb	33.8	95.7%	46.20	31-Mar	63 (8 hours)	0	49.1	03/08/2026 17:00	82	0
PM <sub>2.5</sub>	µg/m <sup>3</sup>	No Data	0.0%	0.00	-	28	0	No Data	-	-	-

SAAQS: Saskatchewan Ambient Air Quality Standards



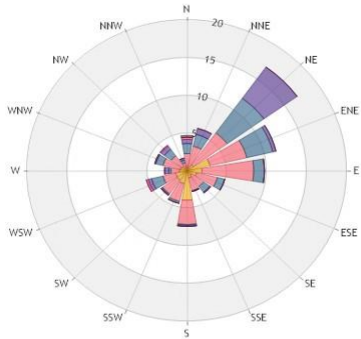
\*If AQHI cannot be calculated due to missing parameters, AQHI plus is reported using PM<sub>2.5</sub>



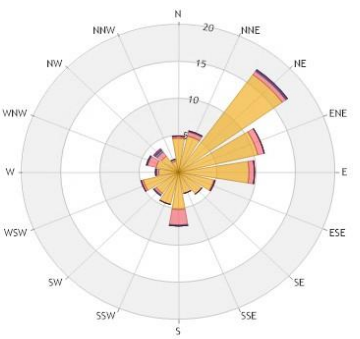
24 Hour Exceedance Summary										
Exceedance Information			Summary of other Parameters during Exceedance							
Pollutant	Date	Conc.	WS	WD	Precip.	NO	NO <sub>2</sub>	NO <sub>x</sub>	O <sub>3</sub>	PM <sub>2.5</sub>

1 Hour Exceedance Summary										
Exceedance Information			Summary of other Parameters during Exceedance							
Pollutant	Date	Conc.	WS	WD	Precip.	NO	NO <sub>2</sub>	NO <sub>x</sub>	O <sub>3</sub>	PM <sub>2.5</sub>

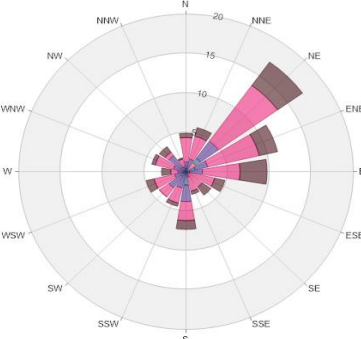
# WYAMZ Clavet Station - March 2026 Summary Report



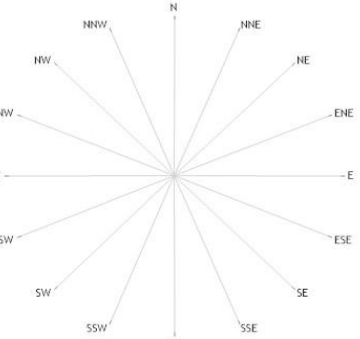
Wind Rose



Pollution Rose NO<sub>2</sub>



Pollution Rose O<sub>3</sub>



Pollution Rose PM<sub>2.5</sub>

Parameters	Unit	Color Code for Wind Speed and Pollutant Conc. Class						
Wind Speed	m/s	0.5 - 1.2	1.2 - 2.4	2.4 - 3.6	3.6 - 4.8	4.8 - 6.0	> 6.0	
NO <sub>2</sub>	ppb	0.0-C-4.0	4.0-C-8.0	8.0-C-12.0	12.0-C-16.0	16.0-C-20.0	> 20	
O <sub>3</sub>	ppb	0.0-C-8.0	8.0-C-16.0	16.0-C-24.0	24.0-C-32.0	32.0-C-40.0	> 40	
PM <sub>2.5</sub>	µg/m <sup>3</sup>	N/A	N/A	N/A	N/A	N/A	N/A	

## Monthly Update

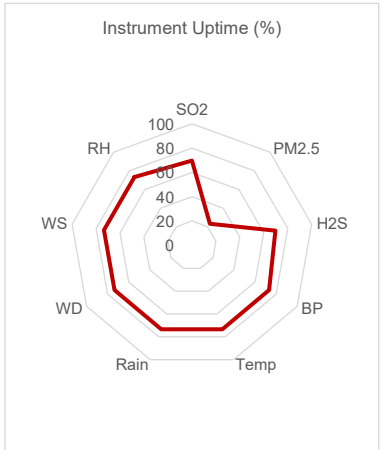
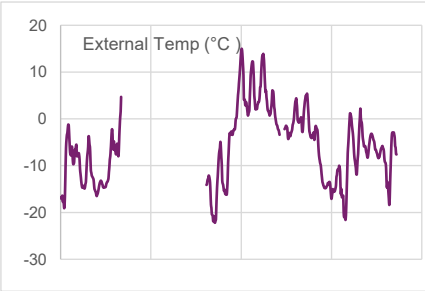
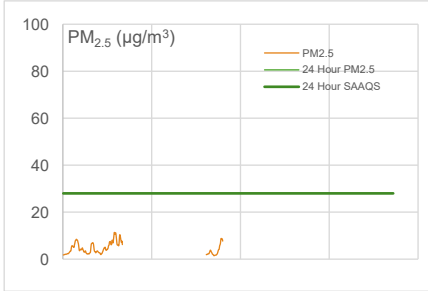
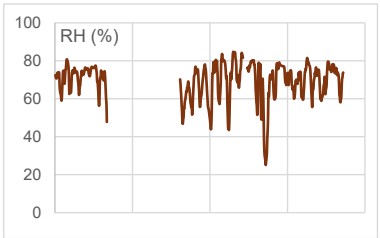
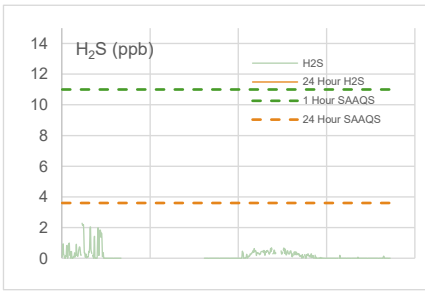
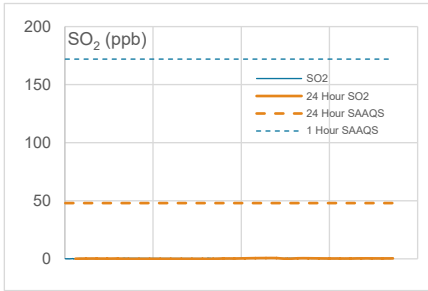
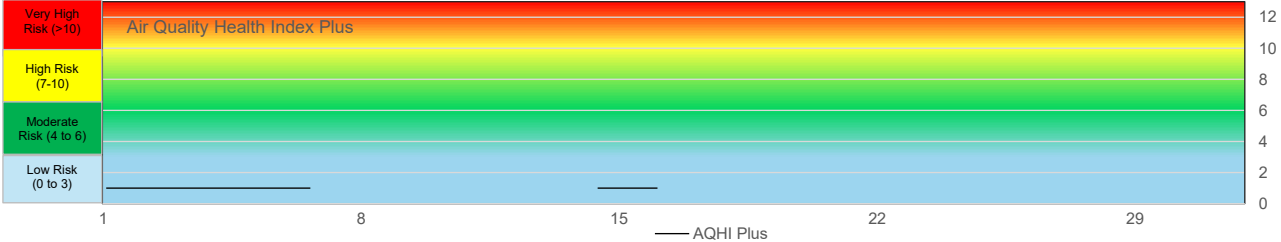
- \* All data has been zero drift and baseline corrected, when required. Data may change after final validation process.
- \* All compliance parameters were within the Saskatchewan Ambient Air Quality Standards.
- \* All parameters were greater than 90% operational for the month with the exception of PM<sub>2.5</sub>.
- \* The NOx permeation tube is depleted and is not included in the daily span or monthly data validation process.
- \* A total of 744 hours of PM<sub>2.5</sub> data not available due to analyzer error.
- \* One hour of data were flagged for all gas analyzers due to daily LZS checks, resulting in the loss of one hour of data each day.
- \* Quarterly calibrations were completed on December 11, 2025.



# WYAMZ Kerrobert Station - March 2026 Summary Report

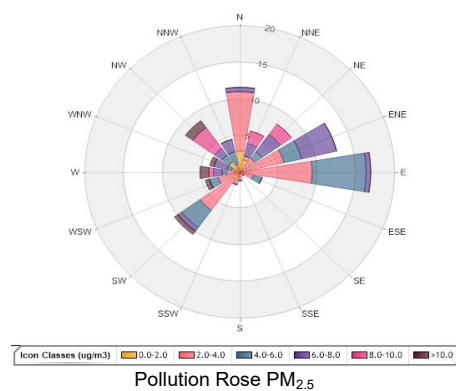
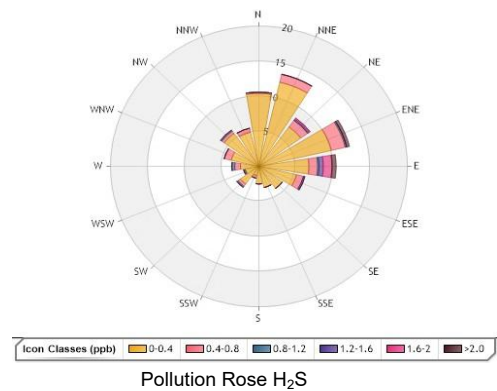
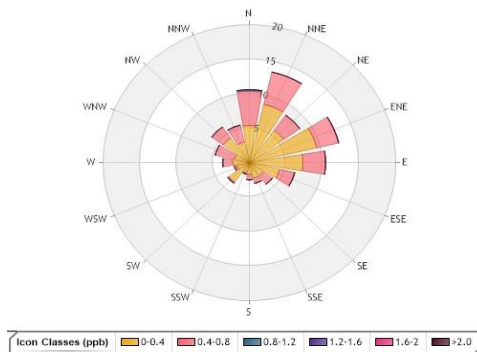
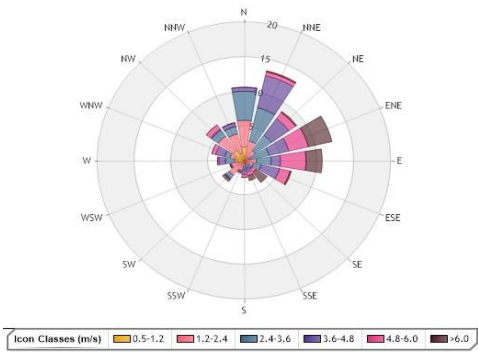
Pollutants		Month Records		24 Hour Records				1 Hour Records			
Name	Unit	Average Concentration	Uptime	Maximum		SAAQS Objective	Exceed Days	Maximum		SAAQS Objective	Exceed Hours
				Conc.	Date			Conc.	Date and Time		
SO <sub>2</sub>	ppb	0.4	69.8%	0.7	19-Mar	48	0	0.8	03/19/2026 13:00	172	0
H <sub>2</sub> S	ppb	0.2	69.8%	0.8	4-Mar	3.6	0	2.3	03/02/2026 22:00	11	0
PM <sub>2.5</sub>	µg/m <sup>3</sup>	4.6	23.1%	7.2	5-Mar	28	0	11.4	03/05/2026 20:00	-	-

SAAQS: Saskatchewan Ambient Air Quality Standards



Exceedance Summary								
24-hour Exceedance Information			Summary of other Parameters during Exceedance					
Pollutant	Date	Conc.	WS	WD	Precip.	SO <sub>2</sub>	H <sub>2</sub> S	PM <sub>2.5</sub>

# WYAMZ Kerrobert Station - March 2026 Summary Report



Parameters	Unit	Color Code for Wind Speed and Pollutant Conc. Class						
Wind Speed	m/s	0.5-W-1.2	1.2-W- 2.4	2.4-W-3.6	3.6-W-4.8	4.8-W-6.0	> 6.0	
SO <sub>2</sub>	ppb	0.0-C-0.4	0.4-C-0.8	0.8-C-1.2	1.2-C-1.6	1.6-C-2.0	C > 2.0	
H <sub>2</sub> S	ppb	0.0-C-0.4	0.4-C-0.8	0.8-C-1.2	1.2-C-1.6	1.6-C-2.0	C > 2.0	
PM <sub>2.5</sub>	µg/m <sup>3</sup>	0.0-C-2.0	2.0-C-4.0	4.0-C-6.0	6.0-C-8.0	8.0-C-10.0	C > 10.0	

## Monthly Update

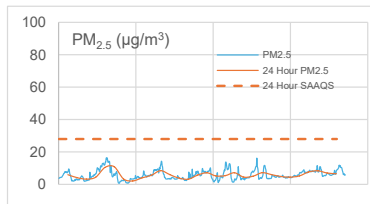
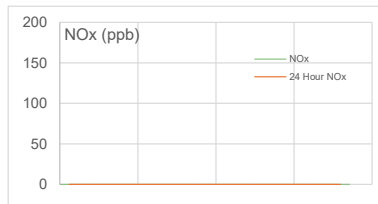
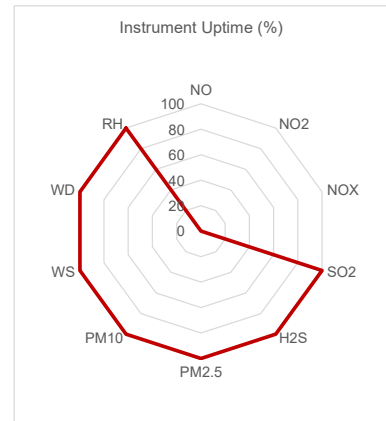
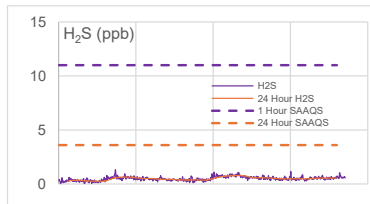
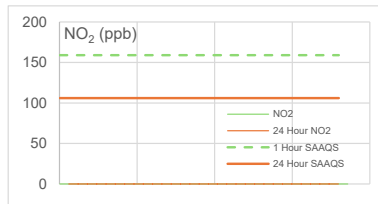
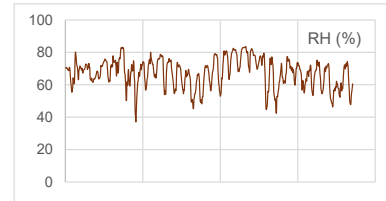
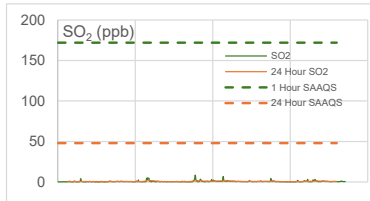
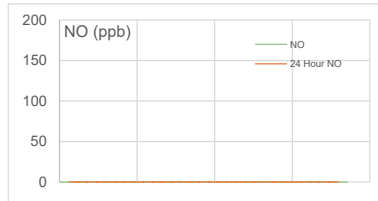
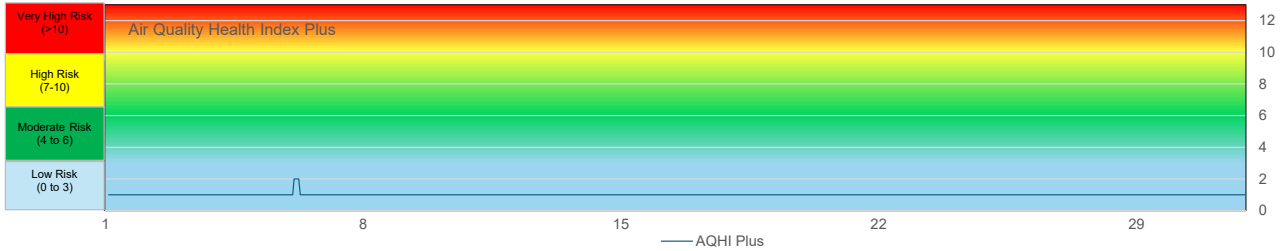
- \* All data has been zero drift, and baseline corrected, when required. Data may change after final validation process.
- \* All compliance parameters were within the Saskatchewan Ambient Air Quality Standards.
- \* All compliance parameters were less than 90% operational for the month.
- \* A total of 194 hours of H<sub>2</sub>S and SO<sub>2</sub> data missing due to analyzer error
- \* A total of 572 hours of PM<sub>2.5</sub> data missing due to analyzer error
- \* The SO<sub>2</sub> permeation tube is depleted and is not included in the daily span or monthly data validation process.
- \* One hour of data were flagged for all gas analyzers due to daily IZS checks, resulting in the loss of one hour of data each day.
- \* Quarterly calibrations completed on December 10, 2025.



# WYAMZ Maidstone Station - March 2026 Summary Report

Pollutants		Month Records		24 Hour Records				1 Hour Records			
Name	Unit	Average Concentration	Uptime	Maximum		SAAQS Objective	Exceed Days	Maximum		SAAQS Objective	Exceed Hours
				Conc.	Date			Conc.	Date and Time		
NO	ppb	No Data	0.0%	0.00	-	-	-	No Data	-	-	-
NO <sub>2</sub>	ppb	No Data	0.0%	0.00	-	106	0	No Data	-	159	0
NO <sub>x</sub>	ppb	No Data	0.0%	0.00	-	-	-	No Data	-	-	-
SO <sub>2</sub>	ppb	0.7	100.0%	1.7	10-Mar	48	0	8.6	03/15/2026 19:00	172	0
H <sub>2</sub> S	ppb	0.5	100.0%	0.8	19-Mar	3.6	0	1.3	03/07/2026 03:00	11	0
PM <sub>2.5</sub>	µg/m <sup>3</sup>	5.9	100.0%	10.9	6-Mar	28	0	16.4	03/06/2026 04:00	-	-

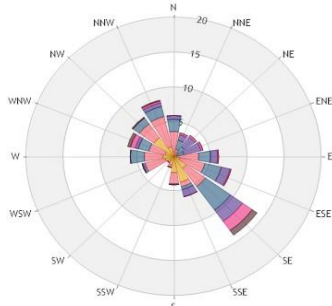
SAAQS: Saskatchewan Ambient Air Quality Standards



24 - Hour Exceedance Information			Summary of other Parameters during Exceedance							
Pollutant	Date	Conc.	WS	WD	H <sub>2</sub> S	NO	NO <sub>2</sub>	NO <sub>x</sub>	SO <sub>2</sub>	PM <sub>2.5</sub>

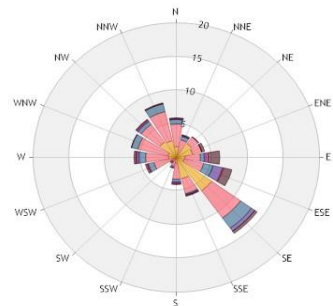
1-hour Exceedance Information			Summary of Other Parameters During Exceedance					
Pollutant	Date /Time	Conc.	WS	WD	Precip.	SO <sub>2</sub>	NO <sub>2</sub>	PM <sub>2.5</sub>

# WYAMZ Maidstone Station - March 2026 Summary Report



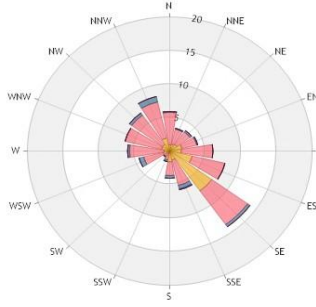
Icon Classes (m/s) 0.5-1.2 1.2-2.4 2.4-3.6 3.6-4.8 4.8-6.0 >6.0

Wind Rose



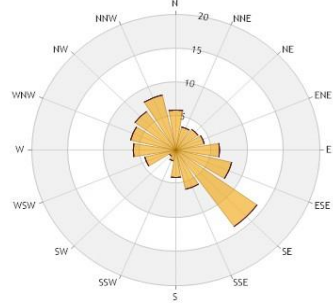
Icon Classes (ppb) 0-0.4 0.4-0.8 0.8-1.2 1.2-1.6 1.6-2 >2.0

Pollution Rose SO<sub>2</sub>



Icon Classes (ppb) 0-0.4 0.4-0.8 0.8-1.2 1.2-1.6 1.6-2 >2.0

Pollution Rose H<sub>2</sub>S



Icon Classes (ppb) 0-4 4-8 8-12 12-16 16-20 >20.0

Pollution Rose PM<sub>2.5</sub>

Parameters	Unit	Color Code for Wind Speed and Pollutant Conc. Class						
Wind Speed	m/s	0.5 - 1.2	1.2 - 2.4	2.4 - 3.6	3.6 - 4.8	4.8 - 6.0	WS > 6.0	
SO <sub>2</sub>	ppb	0.0-C-0.4	0.4-C-0.8	0.8-C-1.2	1.2-C-1.6	1.6-C-2.0	C > 2.0	
H <sub>2</sub> S	ppb	0.0-C-0.4	0.4-C-0.8	0.8-C-1.2	1.2-C-1.6	1.6-C-2.0	C > 2.0	
PM <sub>2.5</sub>	µg/m <sup>3</sup>	0.0-C-4.0	4.0-C-8.0	8.0-C-12.0	12.0-C-16.0	16.0-C-20.0	C > 20.0	

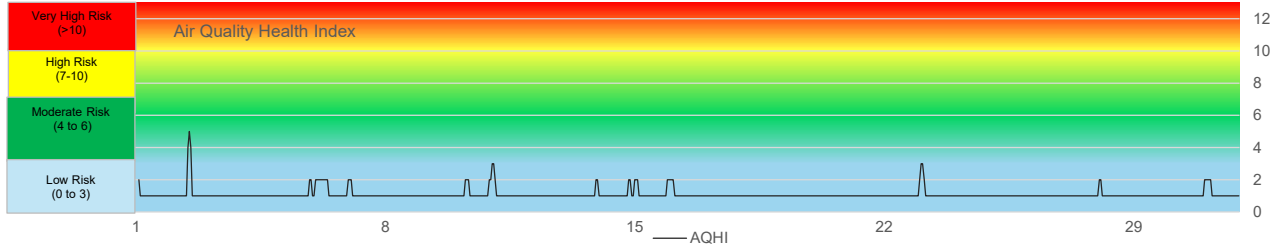
\* All data has been zero drift, and baseline corrected, when required. Data may change after final validation process.  
 \* All compliance parameters were within the Saskatchewan Ambient Air Quality Standards.  
 \* All compliance parameters were greater than 90% operational for the month with the exception of the NO<sub>x</sub> analyzer.  
 \* The NO<sub>2</sub> analyzer was removed on December 17, 2024 for service and maintenance.  
 \* The internal daily IZS checks for the H<sub>2</sub>S and SO<sub>2</sub> analyzers are not working, resulting in the data acquisition system not receiving daily calibration data and it is not part of the validation process.  
 \* Quarterly calibrations completed on December 9 and 10, 2025.



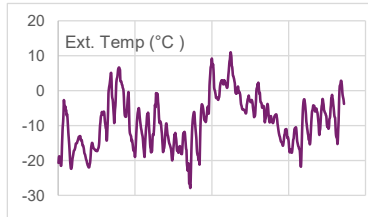
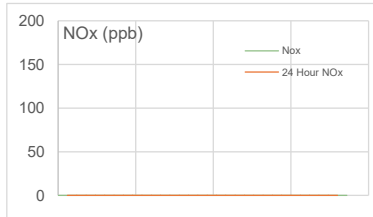
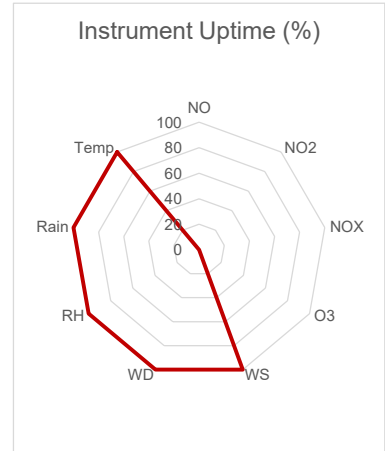
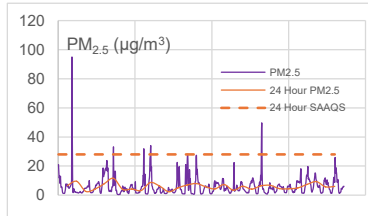
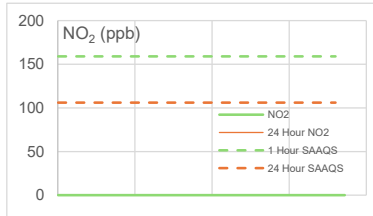
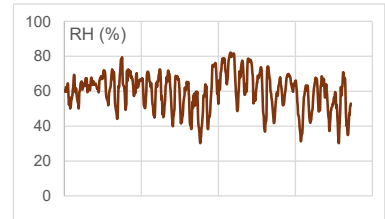
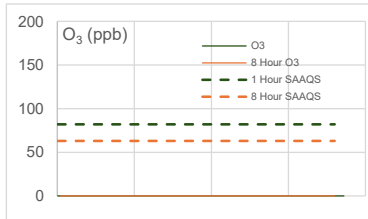
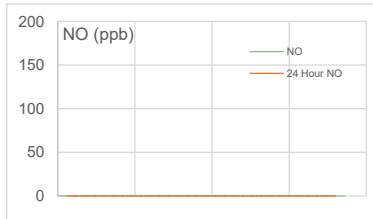
# WYAMZ Meadow Lake Station - March 2026 Summary Report

Pollutants		Month Records		24 Hour Records				1 Hour Records			
Name	Unit	Average Concentration	Uptime	Maximum		SAAQS Objective*	Exceed Days	Maximum		SAAQS Objective	Exceed Hours
				Conc.	Date			Conc.	Date and Time		
NO	ppb	No Data	0.0%	0.0	-	-	-	No Data	-	-	-
NO <sub>2</sub>	ppb	No Data	0.0%	0.0	-	106	0	No Data	-	159	0
NO <sub>x</sub>	ppb	No Data	0.0%	0.0	-	-	-	No Data	-	-	-
O <sub>3</sub>	ppb	No Data	0.0%	0.0	-	63 (8 hours)	0	No Data	-	82	0
PM <sub>2.5</sub>	µg/m <sup>3</sup>	6.0	100.0%	11.6	6-Mar	28	0	95.0	03/02/2026 12:00	-	-

SAAQS: Saskatchewan Ambient Air Quality Standards

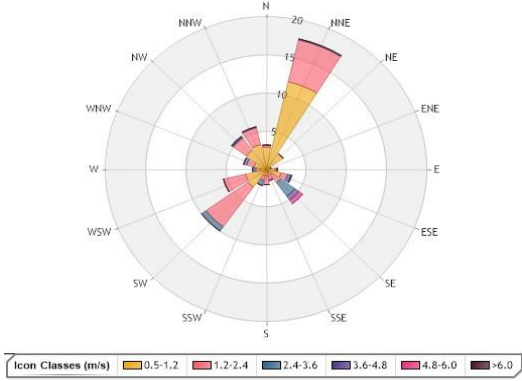


\*If AQHI cannot be calculated due to missing parameters, AQHI plus is reported using PM<sub>2.5</sub>

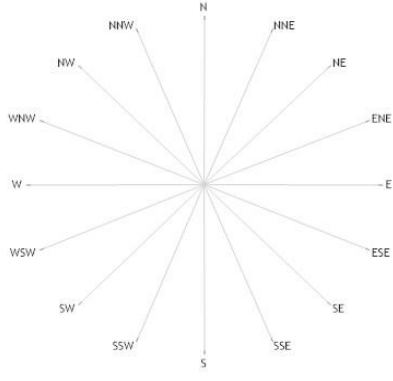


Exceedance Summary										
24-hour Exceedance Information			Summary of other Parameters during Exceedance							
Pollutant	Date	Conc.	WS	WD	Precip.	NO	NO <sub>2</sub>	NO <sub>x</sub>	O <sub>3</sub>	PM <sub>2.5</sub>

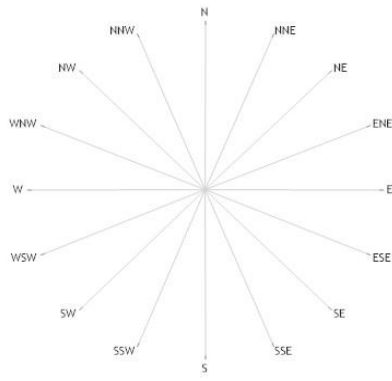
# WYAMZ Meadow Lake Station - March 2026 Summary Report



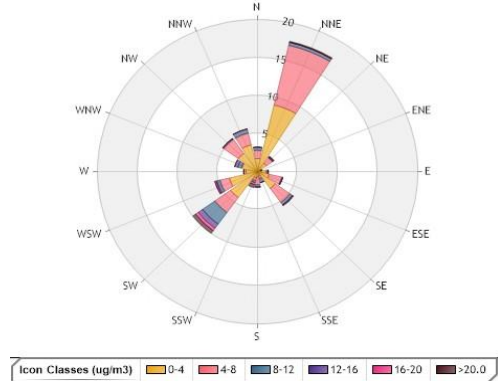
Wind Rose



Pollution Rose NO<sub>2</sub>



Pollution Rose O<sub>3</sub>



Pollution Rose PM<sub>2.5</sub>

Parameters	Unit	Color Code for Wind Speed and Pollutant Conc. Class						
Wind Speed	m/s	0.5-W-1.2	1.2-W-2.4	2.4-W-3.6	3.6-W-4.8	4.8-W-6.0	W > 6.0	
NO <sub>2</sub>	ppb	NA	NA	NA	NA	NA	NA	
O <sub>3</sub>	ppb	NA	NA	NA	NA	NA	NA	
PM <sub>2.5</sub>	µg/m <sup>3</sup>	0.0-C-4.0	4.0-C-8.0	8.0-C-12.0	12.0-C-16.0	16.0-C-20.0	C > 20.0	

## Monthly Update

- \* All data has been zero drift, and baseline corrected, if needed. Data may change after final validation process.
- \* All compliance parameters were within the Saskatchewan Ambient Air Quality Standards.
- \* All compliance parameters less than 90% operational for the month with the exception of PM<sub>2.5</sub>.
- \* O<sub>3</sub> analyzer removed on December 9, 2025 for repair.
- \* A total of 744 hours of NO<sub>2</sub> and O<sub>3</sub> data unavailable due to analyzer error.
- \* One hour of data was flagged for all gas analyzers due to daily IZS checks, resulting in the loss of one hour of data each day.
- \* Quarterly calibrations were completed on December 9, 2025.

