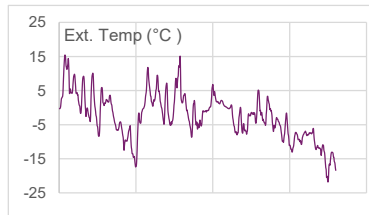
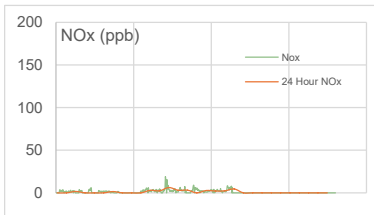
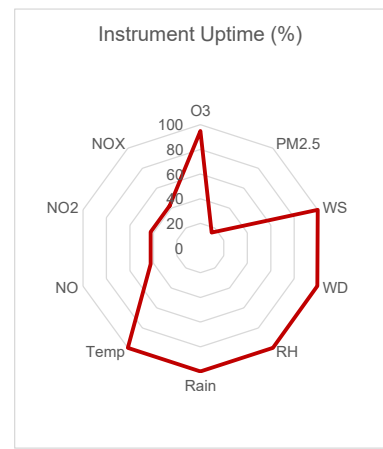
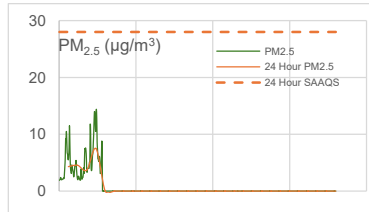
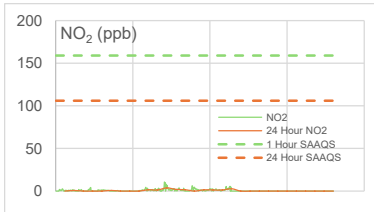
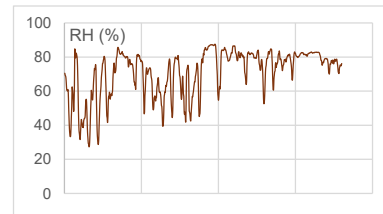
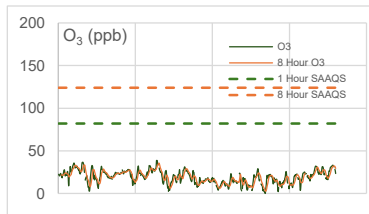
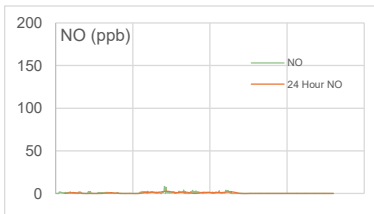
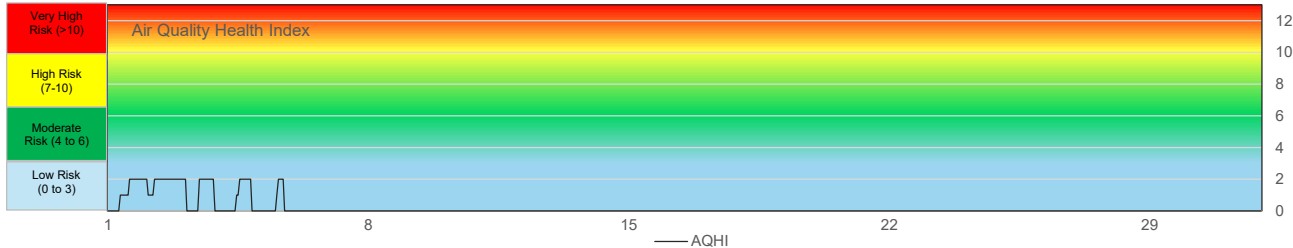


WYAMZ Clavet Station - November 2025 Summary Report

Pollutants		Month Records		24 Hour Records				1 Hour Records			
Name	Unit	Average Concentration	Uptime	Maximum		SAAQS Objective	Exceed Days	Maximum		SAAQS Objective	Exceed Hours
				Conc.	Date			Conc.	Date and Time		
NO	ppb	1.3	42.4%	2.57	12-Nov	-	-	8.3	11/12/2025 6:00 PM	-	-
NO ₂	ppb	1.6	42.4%	3.71	12-Nov	106	0	10.7	11/12/2025 6:00 PM	159	0
NO _x	ppb	2.9	42.4%	6.26	12-Nov	-	-	19	11/12/2025 6:00 PM	-	0
O ₃	ppb	19.2	94.9%	35.53	11-Nov	124 (8 hours)	0	38.7	11/11/2025 4:00 PM	82	0
PM _{2.5}	µg/m ³	5.3	15.6%	7.48	4-Nov	28	0	14.4	11/5/2025 1:00 AM	-	-

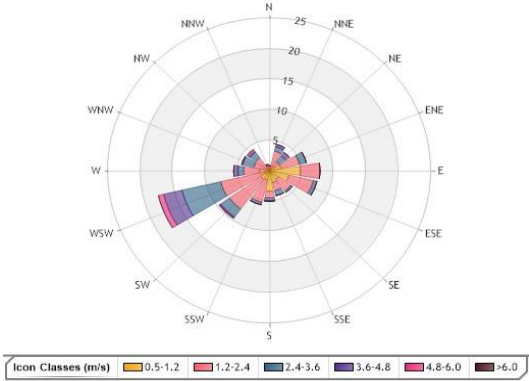
SAAQS: Saskatchewan Ambient Air Quality Standards



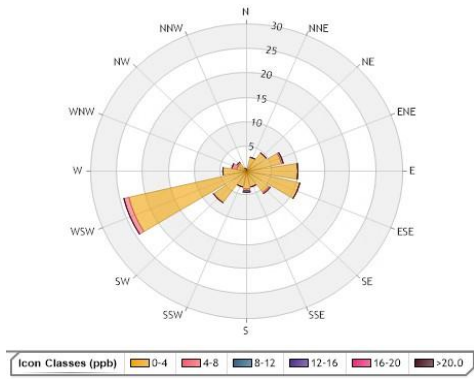
24 Hour Exceedance Summary										
Exceedance Information			Summary of other Parameters during Exceedance							
Pollutant	Date	Conc.	WS	WD	Precip.	NO	NO ₂	NO _x	O ₃	PM _{2.5}

1 Hour Exceedance Summary										
Exceedance Information			Summary of other Parameters during Exceedance							
Pollutant	Date	Conc.	WS	WD	Precip.	NO	NO ₂	NO _x	O ₃	PM _{2.5}

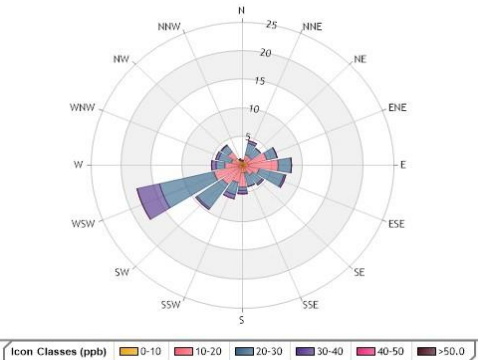
WYAMZ Clavet Station - November 2025 Summary Report



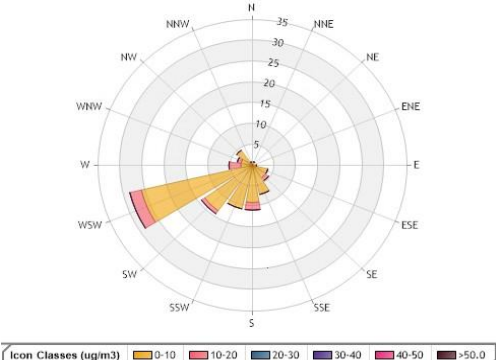
Wind Rose



Pollution Rose NO₂



Pollution Rose O₃



Pollution Rose PM_{2.5}

Parameters	Unit	Color Code for Wind Speed and Pollutant Conc. Class						
Wind Speed	m/s	0.5 - 1.2	1.2 - 2.4	2.4 - 3.6	3.6 - 4.8	4.8 - 6.0	> 6.0	
NO ₂	ppb	0.0-C-4.0	4.0-C-8.0	8.0-C-12.0	12.0-C-16.0	16.0-C-20.0	> 20	
O ₃	ppb	0.0-C-10.0	10.0-C-20.0	20.0-C-30.0	30.0-C-40.0	40.0-C-50.0	> 50	
PM _{2.5}	µg/m ³	0.0-C-10.0	10.0-C-20.0	20.0-C-30.0	30.0-C-40.0	40.0-C-50.0	> 50	

Monthly Update

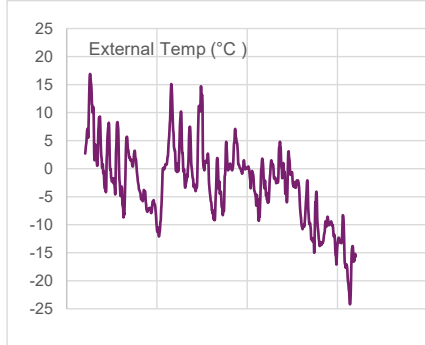
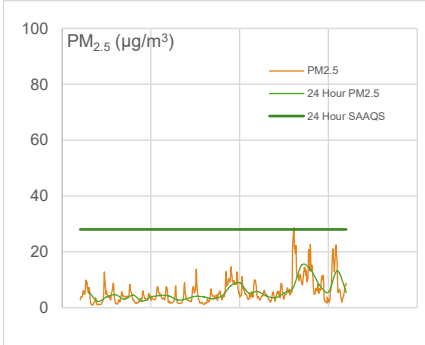
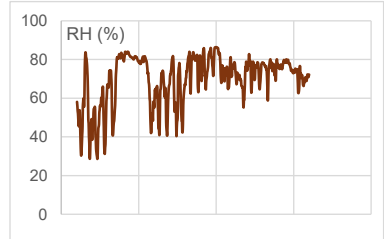
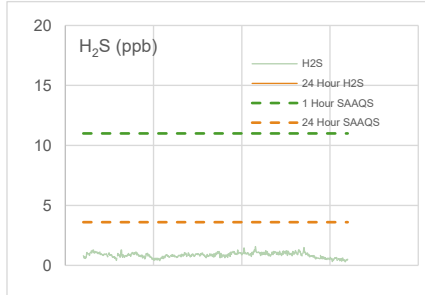
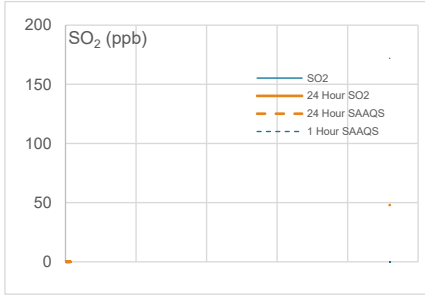
- * All data has been zero drift and baseline corrected, if needed. Data may change after final validation process.
- * All compliance parameters were within the Saskatchewan Ambient Air Quality Standards.
- * All parameters were more than 90% operational for the month with the exception of PM_{2.5} and NO_x.
- * A total of 439 hours of NO_x data not available due to analyzer error.
- * A total 632 hours of PM_{2.5} data not available due to analyzer error.
- * One hour of data were flagged for all gas analyzers due to daily IZS checks, resulting in the loss of one hour of data each day.
- * Quarterly calibrations were completed on September 9, 2025.



WYAMZ Kerrobert Station - November 2025 Summary Report

Pollutants		Month Records		24 Hour Records				1 Hour Records			
Name	Unit	Average Concentration	Uptime	Maximum		SAAQS Objective	Exceed Days	Maximum		SAAQS Objective	Exceed Hours
				Conc.	Date			Conc.	Date and Time		
SO ₂	ppb	0	95.8%	0.0	26-Nov	48	0	0.2	11/26/2025 3:00 PM	172	0
H ₂ S	ppb	0.9	95.8%	1.1	20-Nov	3.6	0	1.6	11/20/2025 1:00 PM	11	0
PM _{2.5}	µg/m ³	5.6	100.0%	15.3	25-Nov	28	0	28.6	11/25/2025 3:00 AM	-	-

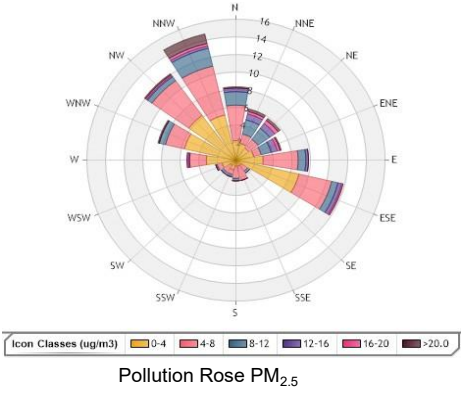
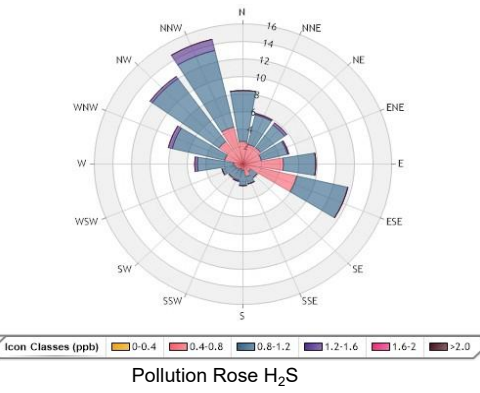
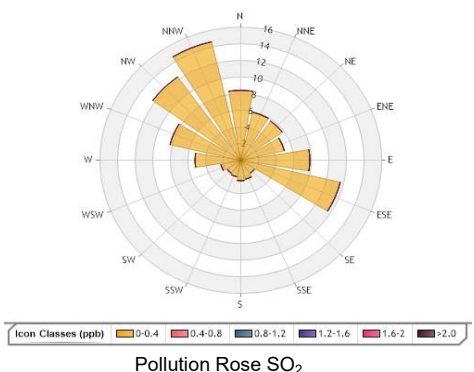
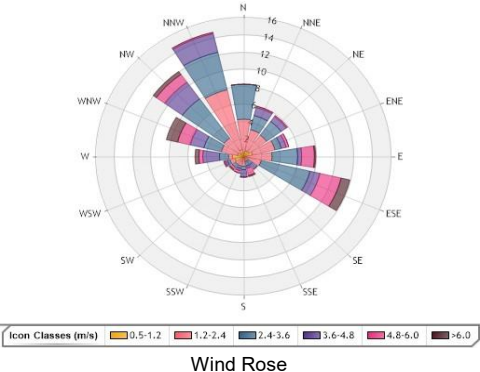
SAAQS: Saskatchewan Ambient Air Quality Standards



Exceedance Summary

24-hour Exceedance Information			Summary of other Parameters during Exceedance					
Pollutant	Date	Conc.	WS	WD	Precip.	SO ₂	H ₂ S	PM _{2.5}

WYAMZ Kerrobert Station - November 2025 Summary Report



Parameters	Unit	Color Code for Wind Speed and Pollutant Conc. Class					
Wind Speed	m/s	0.5-W-1.2	1.2-W- 2.4	2.4-W-3.6	3.6-W-4.8	4.8-W-6.0	> 6.0
SO ₂	ppb	0.0-C-0.4	0.4-C-0.8	0.8-C-1.2	1.2-C-1.6	1.6-C-2.0	C > 2.0
H ₂ S	ppb	0.0-C-0.4	0.4-C-0.8	0.8-C-1.2	1.2-C-1.6	1.6-C-2.0	C > 2.0
PM _{2.5}	µg/m ³	0.0-C-4.0	4.0-C-8.0	8.0-C-12.0	12.0-C-16.0	16.0-C-20.0	C > 20.0

Monthly Update

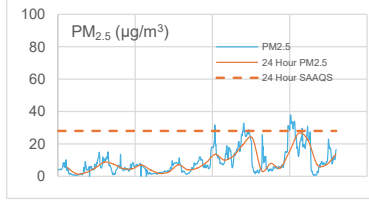
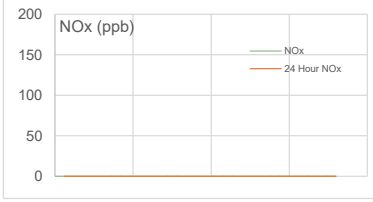
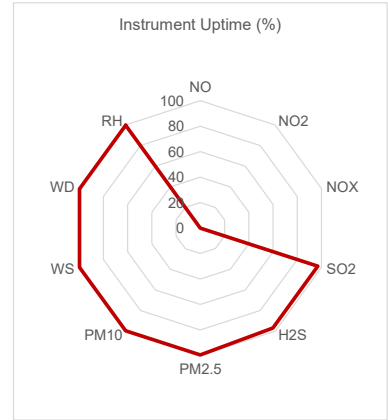
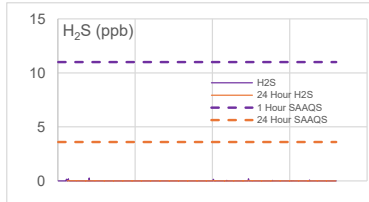
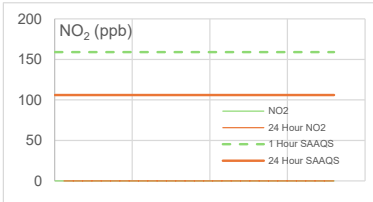
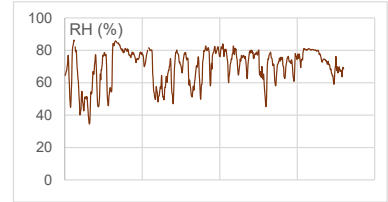
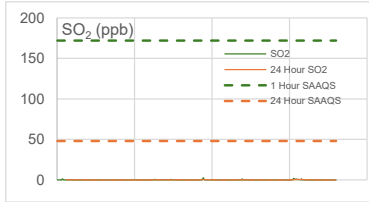
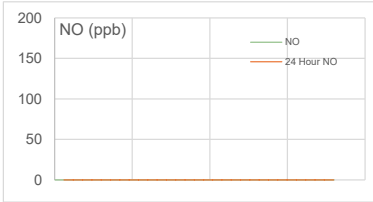
- * All data has been zero drift, and baseline corrected, if needed. Data may change after final validation process.
- * All compliance parameters were within the Saskatchewan Ambient Air Quality Standards.
- * All compliance parameters were greater than 90% operational for the month.
- * The SO₂ permeation tube shows signs of depletion and is not included in the data processing.
- * One hour of data were flagged for all gas analyzers due to daily IZS checks, resulting in the loss of one hour of data each day.
- * Quarterly calibrations completed on September 10, 2025.



WYAMZ Maidstone Station - November 2025 Summary Report

Pollutants		Month Records		24 Hour Records				1 Hour Records			
Name	Unit	Average Concentration	Uptime	Maximum		SAAQS Objective	Exceed Days	Maximum		SAAQS Objective	Exceed Hours
				Conc.	Date			Conc.	Date and Time		
NO	ppb	No Data	0.0%	0.00	-	-	-	No Data	-	-	-
NO ₂	ppb	No Data	0.0%	0.00	-	106	0	No Data	-	159	0
NO _x	ppb	No Data	0.0%	0.00	-	-	-	No Data	-	-	-
SO ₂	ppb	0.1	96.9%	0.6	26-Nov	48	0	2.5	11/16/2025 5:00 PM	172	0
H ₂ S	ppb	0.0	96.9%	0.0	2-Nov	3.6	0	0.3	11/4/2025 9:00 AM	11	0
PM _{2.5}	µg/m ³	8.9	99.6%	26.6	26-Nov	28	0	37.9	11/26/2025 2:00 AM	-	-

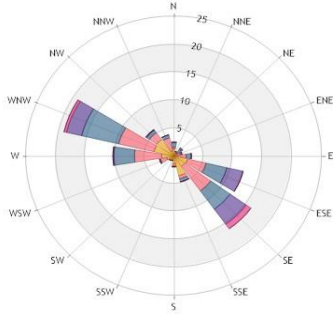
SAAQS: Saskatchewan Ambient Air Quality Standards



Exceedance Summary										
24 - Hour Exceedance Information			Summary of other Parameters during Exceedance							
Pollutant	Date	Conc.	WS	WD	H ₂ S	NO	NO ₂	NO _x	SO ₂	PM _{2.5}

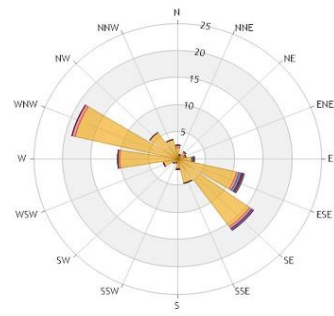
Exceedance Summary (1-Hour Average)									
1-hour Exceedance Information			Summary of Other Parameters During Exceedance						
Pollutant	Date /Time	Conc.	WS	WD	Precip.	SO ₂	NO ₂	PM _{2.5}	

WYAMZ Maidstone Station - November 2025 Summary Report



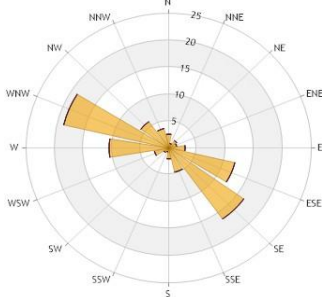
Icon Classes (m/s) 0.5-1.2 1.2-2.4 2.4-3.6 3.6-4.8 4.8-6.0 >6.0

Wind Rose



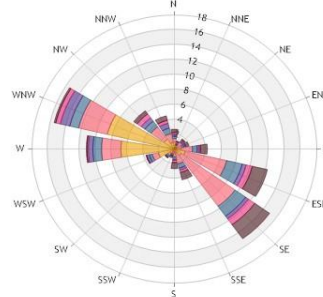
Icon Classes (ppb) 0-0.4 0.4-0.8 0.8-1.2 1.2-1.6 1.6-2.0 >2.0

Pollution Rose SO₂



Icon Classes (ppb) 0-0.4 0.4-0.8 0.8-1.2 1.2-1.6 1.6-2.0 >2.0

Pollution Rose H₂S



Icon Classes (ug/m3) 0-4 4-8 8-12 12-16 16-20 >20.0

Pollution Rose PM_{2.5}

Parameters	Unit	Color Code for Wind Speed and Pollutant Conc. Class					
Wind Speed	m/s	0.5 - 1.2	1.2 - 2.4	2.4 - 3.6	3.6 - 4.8	4.8 - 6.0	WS > 6.0
SO ₂	ppb	0.0-C-0.4	0.4-C-0.8	0.8-C-1.2	1.2-C-1.6	1.6-C-2.0	C > 2.0
H ₂ S	ppb	0.0-C-0.4	0.4-C-0.8	0.8-C-1.2	1.2-C-1.6	1.6-C-2.0	C > 2.0
PM _{2.5}	µg/m ³	0.0-C-4.0	4.0-C-8.0	8.0-C-12.0	12.0-C-16.0	16.0-C-20.0	C > 20.0

Monthly Update

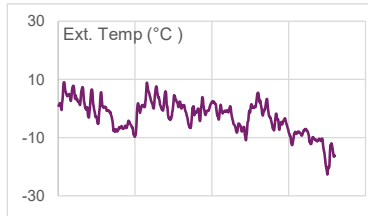
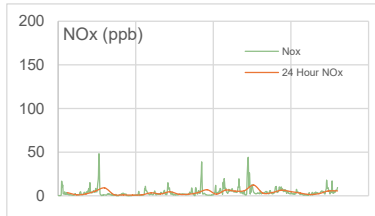
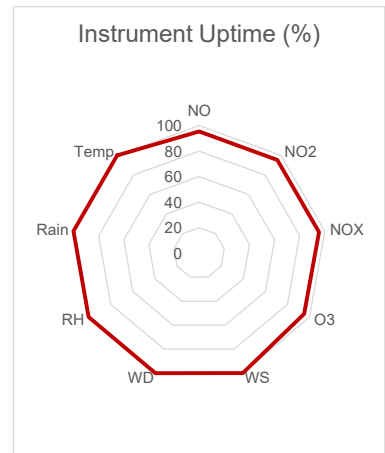
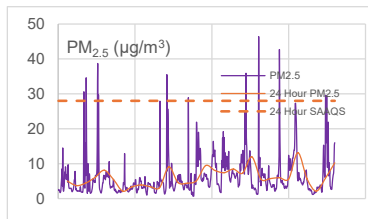
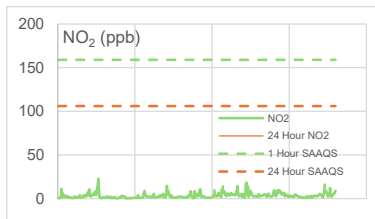
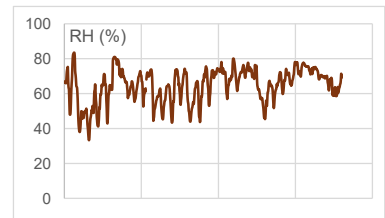
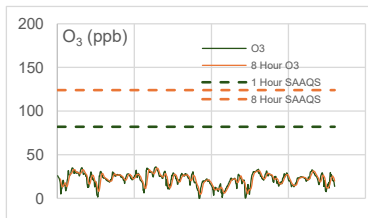
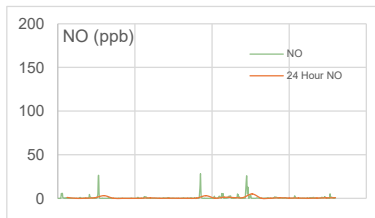
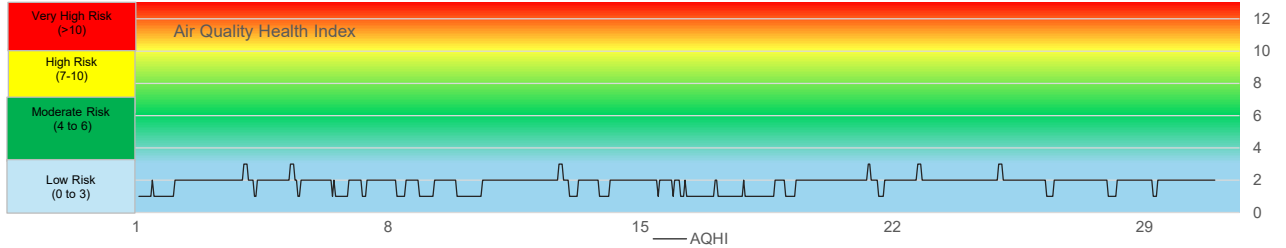
- * System was restarted on September 10, 2025.
- * All data has been zero drift, and baseline corrected, if needed. Data may change after final validation process.
- * All compliance parameters were within the Saskatchewan Ambient Air Quality Standards.
- * All compliance parameters were greater than 90% operational for the month with the exception of the NO_x analyzer.
- * The NO₂ analyzer was removed on December 17, 2024 for service and maintenance.
- * The internal daily IZS checks for the H₂S and SO₂ analyzers are not working, resulting in the data acquisition system not receiving daily calibration data.
- * One hour of data were flagged for all gas analyzers due to daily IZS checks, resulting in the loss of one hour of data each day.
- * Quarterly calibrations completed on September 11, 2025.



WYAMZ Meadow Lake Station - November 2025 Summary Report

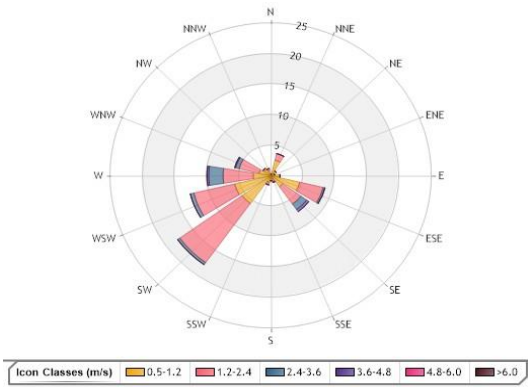
Pollutants		Month Records		24 Hour Records				1 Hour Records			
Name	Unit	Average Concentration	Uptime	Maximum		SAAQS Objective*	Exceed Days	Maximum		SAAQS Objective	Exceed Hours
				Conc.	Date			Conc.	Date and Time		
NO	ppb	0.7	95.4%	5.1	21-Nov	-	-	28.2	11/16/2025 10:00 AM	-	-
NO ₂	ppb	3.3	95.4%	7.3	21-Nov	106	0	22.7	11/5/2025 9:00 AM	159	0
NO _x	ppb	4	95.4%	12.3	21-Nov	-	-	48.3	11/5/2025 9:00 AM	-	-
O ₃	ppb	21.8	95.1%	34.7	11-Nov	124 (8 hours)	0	36.1	11/11/2025 4:00 PM	82	0
PM _{2.5}	µg/m ³	6.1	100.0%	13.2	26-Nov	28	0	46.4	11/22/2025 6:00 PM	-	-

SAAQS: Saskatchewan Ambient Air Quality Standards

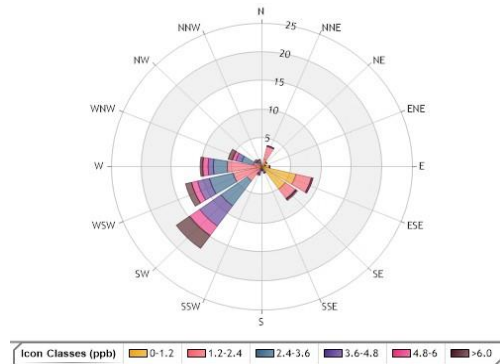


Exceedance Summary										
24-hour Exceedance Information			Summary of other Parameters during Exceedance							
Pollutant	Date	Conc.	WS	WD	Precip.	NO	NO ₂	NO _x	O ₃	PM _{2.5}

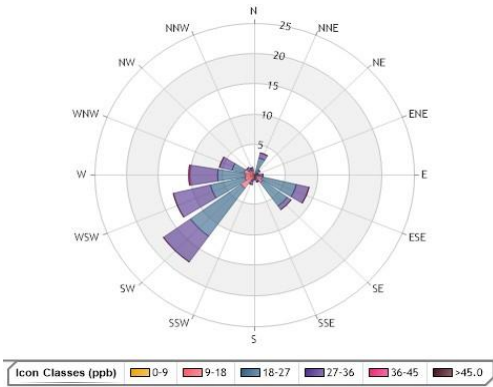
WYAMZ Meadow Lake Station - November 2025 Summary Report



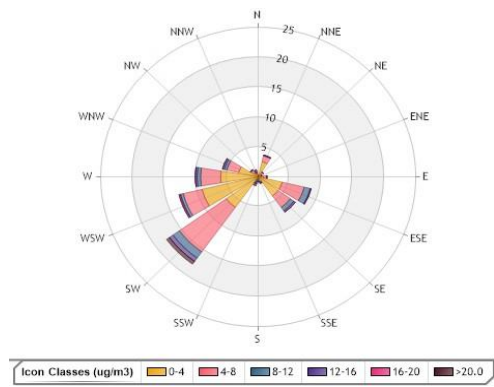
Wind Rose



Pollution Rose NO₂



Pollution Rose O₃



Pollution Rose PM_{2.5}

Parameters	Unit	Color Code for Wind Speed and Pollutant Conc. Class						
Wind Speed	m/s	0.5-W-1.2	1.2-W-2.4	2.4-W-3.6	3.6-W-4.8	4.8-W-6.0	W > 6.0	
NO ₂	ppb	0.0-C-1.2	1.2-C-2.4	2.4-C-3.6	3.6-C-4.8	4.8-C-6.0	C > 6.0	
O ₃	ppb	0.0-C-9.0	9.0-C-18.0	18.0-C-27.0	27.0-C-36.0	36.0-C-45.0	C > 45.0	
PM _{2.5}	µg/m ³	0.0-C-4.0	4.0-C-8.0	8.0-C-12.0	12.0-C-16.0	16.0-C-20.0	C > 20.0	

Monthly Update

- * All data has been zero drift, and baseline corrected, if needed. Data may change after final validation process.
- * All compliance parameters were within the Saskatchewan Ambient Air Quality Standards with the exception of one PM_{2.5} 24-Hour Exceedances.
- * All compliance parameters were more than 90% operational for the month.
- * One hour of data was flagged for all gas analyzers due to daily IZS checks, resulting in the loss of one hour of data each day.
- * Ozone data are provided for reference only, as the instrument shows a high slope and requires further investigation.
- * Quarterly calibrations were completed on September 4, 2025.

