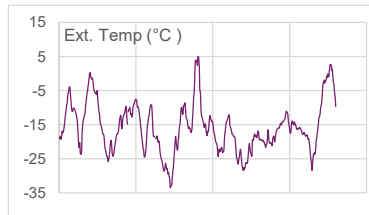
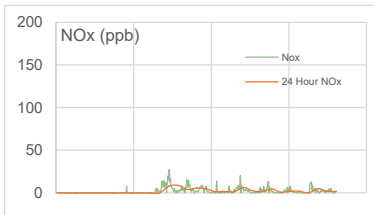
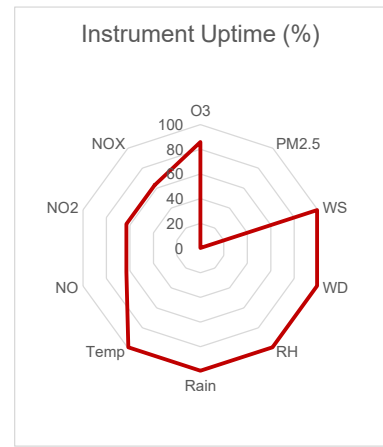
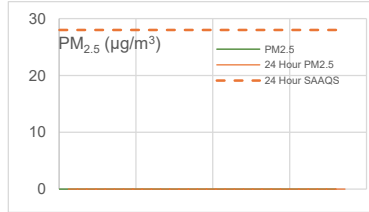
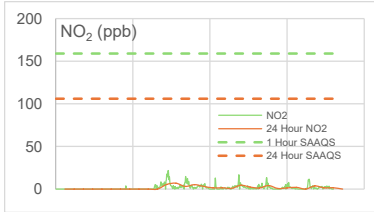
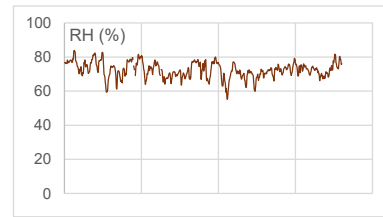
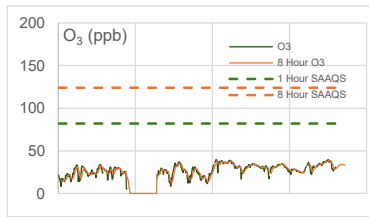
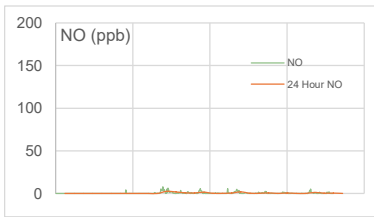
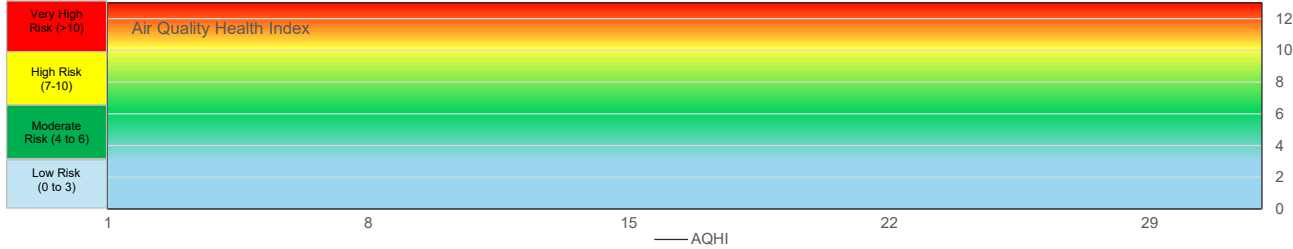


# WYAMZ Clavet Station - December 2025 Summary Report

Pollutants		Month Records		24 Hour Records				1 Hour Records			
Name	Unit	Average Concentration	Uptime	Maximum		SAAQS Objective	Exceed Days	Maximum		SAAQS Objective	Exceed Hours
				Conc.	Date			Conc.	Date and Time		
NO	ppb	0.7	63.0%	2.47	12-Dec	-	-	7.8	12/12/2025 2:00 PM	-	-
NO <sub>2</sub>	ppb	2.6	63.0%	6.90	13-Dec	106	0	21.8	12/13/2025 4:00 AM	159	0
NO <sub>x</sub>	ppb	3.2	63.0%	8.62	13-Dec	-	-	27.3	12/13/2025 4:00 AM	-	-
O <sub>3</sub>	ppb	28	85.9%	38.55	30-Dec	124 (8 hours)	0	39.7	12/18/2025 2:00 AM	82	0
PM <sub>2.5</sub>	µg/m <sup>3</sup>	No Data	0.0%	0.00	-	28	0	No Data	-	-	-

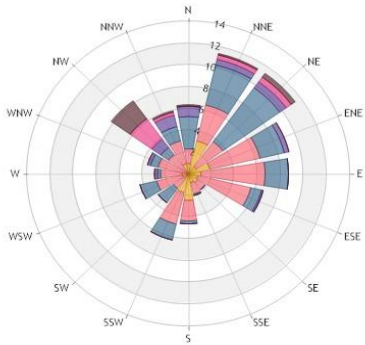
SAAQS: Saskatchewan Ambient Air Quality Standards



24 Hour Exceedance Summary										
Exceedance Information			Summary of other Parameters during Exceedance							
Pollutant	Date	Conc.	WS	WD	Precip.	NO	NO <sub>2</sub>	NO <sub>x</sub>	O <sub>3</sub>	PM <sub>2.5</sub>

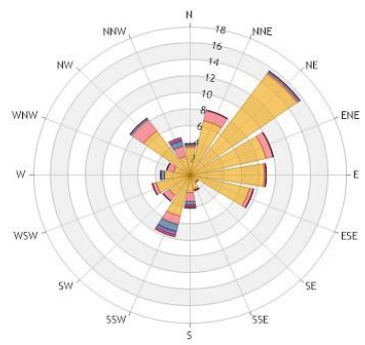
1 Hour Exceedance Summary										
Exceedance Information			Summary of other Parameters during Exceedance							
Pollutant	Date	Conc.	WS	WD	Precip.	NO	NO <sub>2</sub>	NO <sub>x</sub>	O <sub>3</sub>	PM <sub>2.5</sub>

# WYAMZ Clavet Station - December 2025 Summary Report



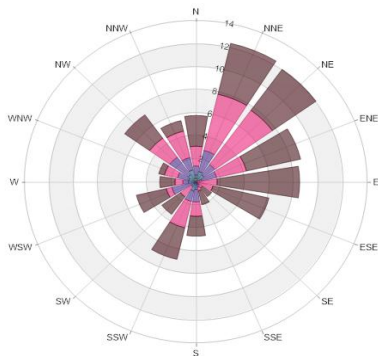
Icon Classes (m/s) 0.5-1.2 1.2-2.4 2.4-3.6 3.6-4.8 4.8-6.0 >6.0

Wind Rose



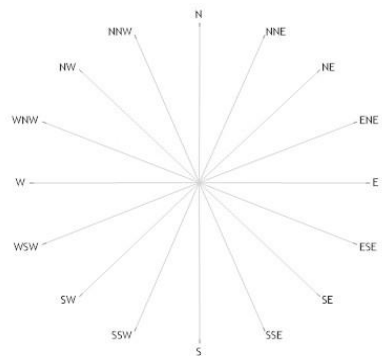
Icon Classes (ppb) 0-4 4-8 8-12 12-16 16-20 >20.0

Pollution Rose NO<sub>2</sub>



Icon Classes (ppb) 0.0-6.0 6.0-12.0 12.0-18.0 18.0-24.0 24.0-30.0 >30.0

Pollution Rose O<sub>3</sub>



Pollution Rose PM<sub>2.5</sub>

Parameters	Unit	Color Code for Wind Speed and Pollutant Conc. Class						
Wind Speed	m/s	0.5 - 1.2	1.2 - 2.4	2.4 - 3.6	3.6 - 4.8	4.8 - 6.0	> 6.0	
NO <sub>2</sub>	ppb	0.0-C-4.0	4.0-C-8.0	8.0-C-12.0	12.0-C-16.0	16.0-C-20.0	> 20	
O <sub>3</sub>	ppb	0.0-C-6.0	6.0-C-12.0	12.0-C-18.0	18.0-C-24.0	20.0-C-30.0	> 30	
PM <sub>2.5</sub>	µg/m <sup>3</sup>	N/A	N/A	N/A	N/A	N/A	N/A	

## Monthly Update

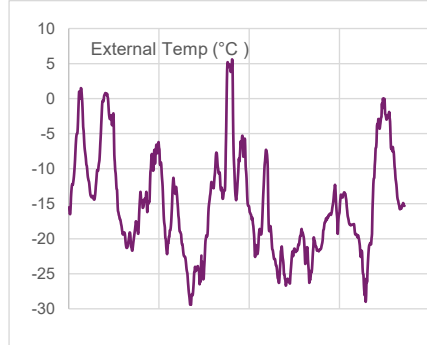
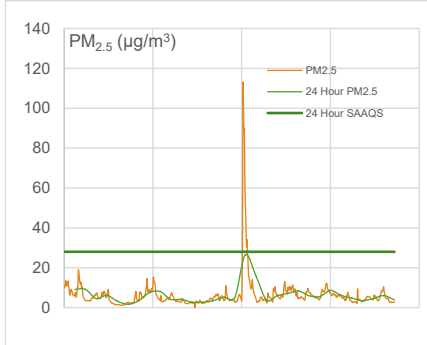
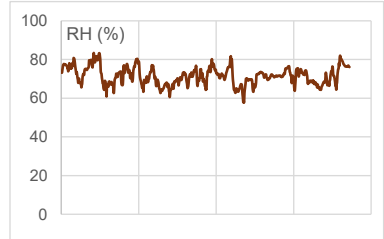
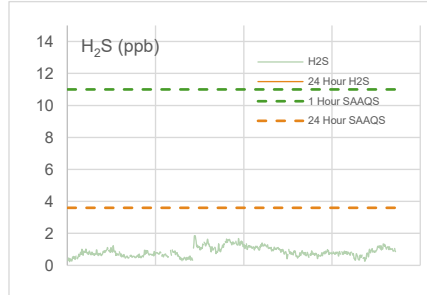
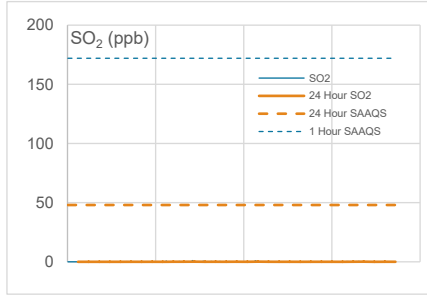
- \* All data has been zero drift and baseline corrected, when required. Data may change after final validation process.
- \* All compliance parameters were within the Saskatchewan Ambient Air Quality Standards.
- \* All parameters were less than 90% operational for the month.
- \* A total of 255 hours of NO<sub>x</sub> data not available due to analyzer error.
- \* The NO<sub>x</sub> permeation tube is depletion and is not included in the daily span or monthly data validation process.
- \* A total 71 hours of O<sub>3</sub> data not available due to analyzer error.
- \* A total 744 hours of PM<sub>2.5</sub> data not available due to analyzer error.
- \* One hour of data were flagged for all gas analyzers due to daily IZS checks, resulting in the loss of one hour of data each day.
- \* Quarterly calibrations were completed on December 11, 2025.



# WYAMZ Kerrobert Station - December 2025 Summary Report

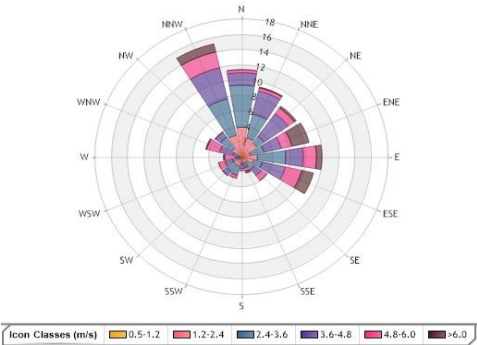
Pollutants		Month Records		24 Hour Records				1 Hour Records			
Name	Unit	Average Concentration	Uptime	Maximum		SAAQS Objective	Exceed Days	Maximum		SAAQS Objective	Exceed Hours
				Conc.	Date			Conc.	Date and Time		
SO <sub>2</sub>	ppb	0	95.3%	0.1	18-Dec	48	0	1.0	12/12/2025 8:00 PM	172	0
H <sub>2</sub> S	ppb	0.9	95.3%	1.5	16-Dec	3.6	0	1.9	12/13/2025 12:00 AM	11	0
PM <sub>2.5</sub>	µg/m <sup>3</sup>	6.4	99.9%	26.4	17-Dec	28	0	113.1	12/17/2025 7:00 PM	-	-

SAAQS: Saskatchewan Ambient Air Quality Standards

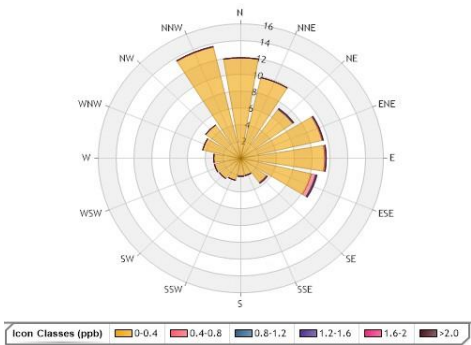


Exceedance Summary									
24-hour Exceedance Information			Summary of other Parameters during Exceedance						
Pollutant	Date	Conc.	WS	WD	Precip.	SO <sub>2</sub>	H <sub>2</sub> S	PM <sub>2.5</sub>	

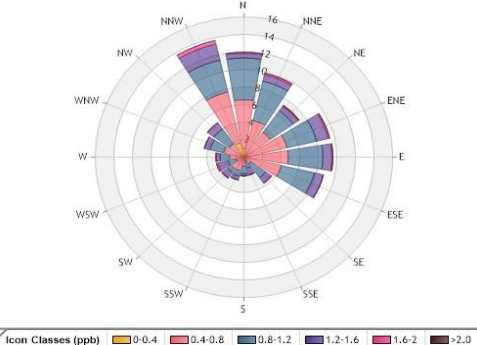
# WYAMZ Kerrobert Station - December 2025 Summary Report



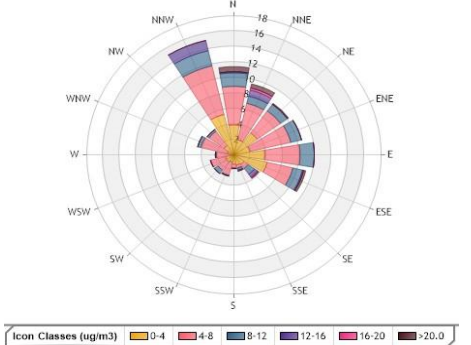
Wind Rose



Pollution Rose SO<sub>2</sub>



Pollution Rose H<sub>2</sub>S



Pollution Rose PM<sub>2.5</sub>

Parameters	Unit	Color Code for Wind Speed and Pollutant Conc. Class						
Wind Speed	m/s	0.5-W-1.2	1.2-W- 2.4	2.4-W-3.6	3.6-W-4.8	4.8-W-6.0	> 6.0	
SO <sub>2</sub>	ppb	0.0-C-0.4	0.4-C-0.8	0.8-C-1.2	1.2-C-1.6	1.6-C-2.0	C > 2.0	
H <sub>2</sub> S	ppb	0.0-C-0.4	0.4-C-0.8	0.8-C-1.2	1.2-C-1.6	1.6-C-2.0	C > 2.0	
PM <sub>2.5</sub>	µg/m <sup>3</sup>	0.0-C-4.0	4.0-C-8.0	8.0-C-12.0	12.0-C-16.0	16.0-C-20.0	C > 20.0	

## Monthly Update

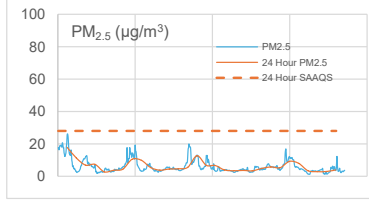
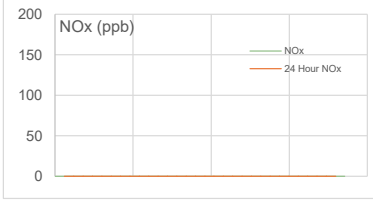
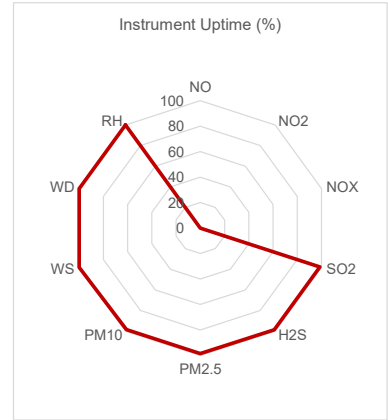
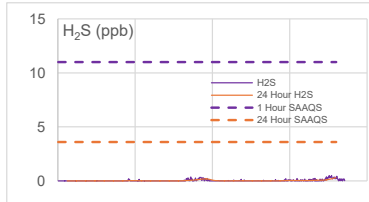
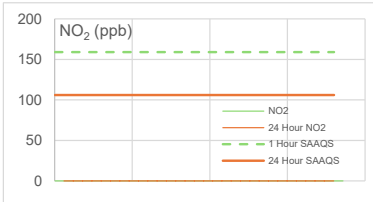
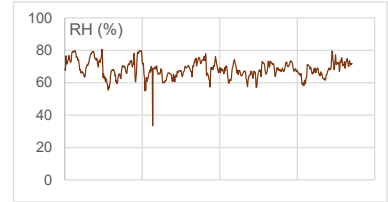
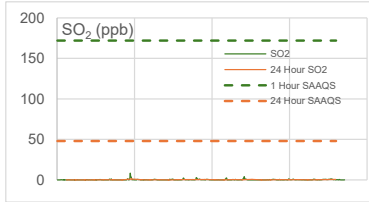
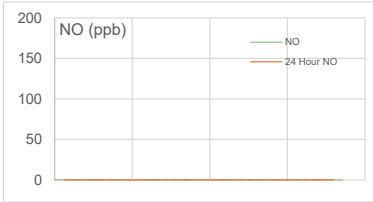
- \* All data has been zero drift, and baseline corrected, if needed. Data may change after final validation process.
- \* All compliance parameters were within the Saskatchewan Ambient Air Quality Standards.
- \* All compliance parameters were greater than 90% operational for the month.
- \* The SO<sub>2</sub> permeation tube is depleting and is not included in the daily span or monthly data validation process.
- \* One hour of data were flagged for all gas analyzers due to daily IZS checks, resulting in the loss of one hour of data each day.
- \* Quarterly calibrations completed on December 10, 2025.



# WYAMZ Maidstone Station - December 2025 Summary Report

Pollutants		Month Records		24 Hour Records				1 Hour Records			
Name	Unit	Average Concentration	Uptime	Maximum		SAAQS Objective	Exceed Days	Maximum		SAAQS Objective	Exceed Hours
				Conc.	Date			Conc.	Date and Time		
NO	ppb	No Data	0.0%	0.00	-	-	-	No Data	-	-	-
NO <sub>2</sub>	ppb	No Data	0.0%	0.00	-	106	0	No Data	-	159	0
NO <sub>x</sub>	ppb	No Data	0.0%	0.00	-	-	-	No Data	-	-	-
SO <sub>2</sub>	ppb	0.3	98.7%	1.1	8-Dec	48	0	8.4	12/8/2025 9:00 PM	172	0
H <sub>2</sub> S	ppb	0.0	98.8%	0.3	30-Dec	3.6	0	0.5	12/30/2025 12:00 PM	11	0
PM <sub>2.5</sub>	µg/m <sup>3</sup>	6.1	98.5%	17.8	1-Dec	28	0	26.2	12/2/2025 1:00 AM	-	-

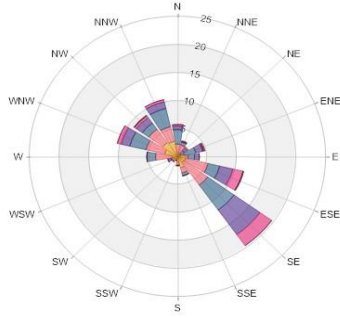
SAAQS: Saskatchewan Ambient Air Quality Standards



Exceedance Summary										
24 - Hour Exceedance Information			Summary of other Parameters during Exceedance							
Pollutant	Date	Conc.	WS	WD	H <sub>2</sub> S	NO	NO <sub>2</sub>	NO <sub>x</sub>	SO <sub>2</sub>	PM <sub>2.5</sub>

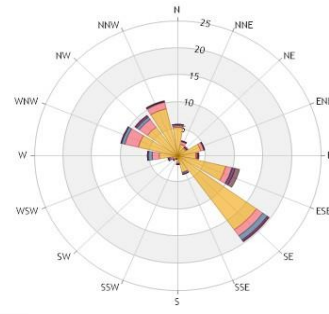
Exceedance Summary (1-Hour Average)									
1-hour Exceedance Information			Summary of Other Parameters During Exceedance						
Pollutant	Date /Time	Conc.	WS	WD	Precip.	SO <sub>2</sub>	NO <sub>2</sub>	PM <sub>2.5</sub>	

# WYAMZ Maidstone Station - December 2025 Summary Report



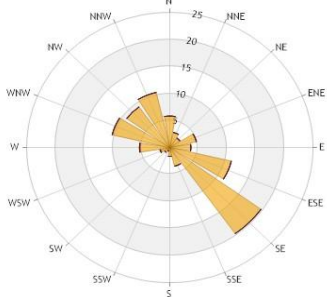
Icon Classes (m/s) 0.5-1.2 1.2-2.4 2.4-3.6 3.6-4.8 4.8-6.0 >6.0

Wind Rose



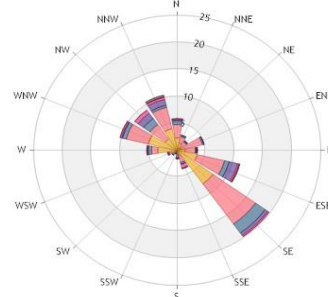
Icon Classes (ppb) 0-0.4 0.4-0.8 0.8-1.2 1.2-1.6 1.6-2 >2.0

Pollution Rose SO<sub>2</sub>



Icon Classes (ppb) 0-0.4 0.4-0.8 0.8-1.2 1.2-1.6 1.6-2 >2.0

Pollution Rose H<sub>2</sub>S



Icon Classes (ug/m3) 0-4 4-8 8-12 12-16 16-20 >20.0

Pollution Rose PM<sub>2.5</sub>

Parameters	Unit	Color Code for Wind Speed and Pollutant Conc. Class					
Wind Speed	m/s	0.5 - 1.2	1.2 - 2.4	2.4 - 3.6	3.6 - 4.8	4.8 - 6.0	WS > 6.0
SO <sub>2</sub>	ppb	0.0-C-0.4	0.4-C-0.8	0.8-C-1.2	1.2-C-1.6	1.6-C-2.0	C > 2.0
H <sub>2</sub> S	ppb	0.0-C-0.4	0.4-C-0.8	0.8-C-1.2	1.2-C-1.6	1.6-C-2.0	C > 2.0
PM <sub>2.5</sub>	µg/m <sup>3</sup>	0.0-C-4.0	4.0-C-8.0	8.0-C-12.0	12.0-C-16.0	16.0-C-20.0	C > 20.0

## Monthly Update

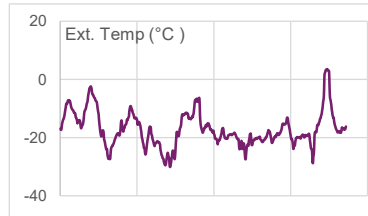
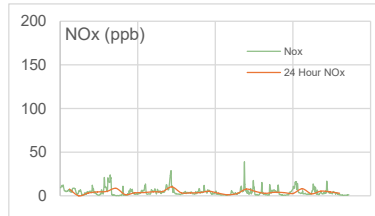
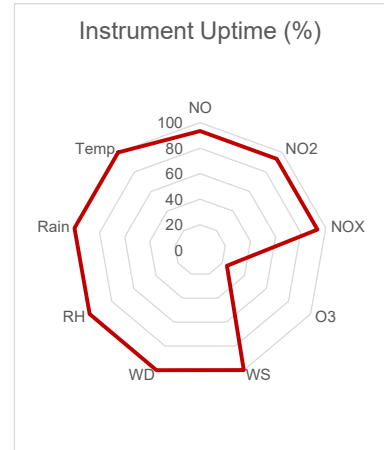
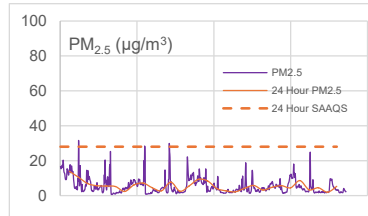
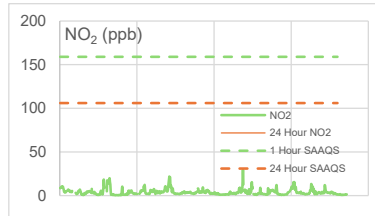
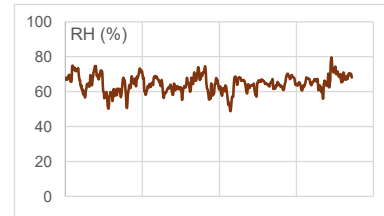
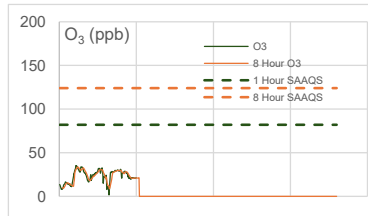
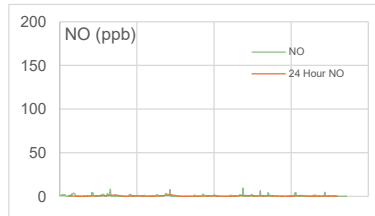
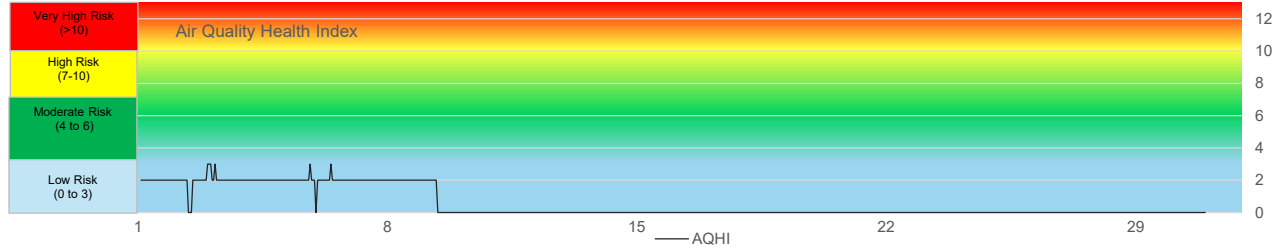
- \* All data has been zero drift, and baseline corrected, when required. Data may change after final validation process.
- \* All compliance parameters were within the Saskatchewan Ambient Air Quality Standards.
- \* All compliance parameters were greater than 90% operational for the month with the exception of the NOx analyzer.
- \* The NO<sub>2</sub> analyzer was removed on December 17, 2024 for service and maintenance.
- \* The internal daily IZS checks for the H<sub>2</sub>S and SO<sub>2</sub> analyzers are not working, resulting in the data acquisition system not receiving daily calibration data and it is not part of the validation process.
- \* One hour of data were flagged for all gas analyzers due to daily IZS checks, resulting in the loss of one hour of data each day.
- \* Quarterly calibrations completed on December 9 and 10, 2025.



# WYAMZ Meadow Lake Station - November 2025 Summary Report

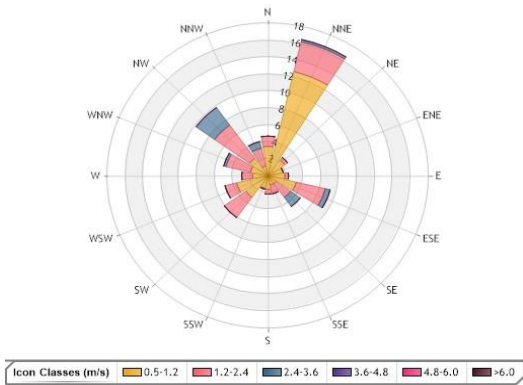
Pollutants		Month Records		24 Hour Records				1 Hour Records			
Name	Unit	Average Concentration	Uptime	Maximum		SAAQS Objective*	Exceed Days	Maximum		SAAQS Objective	Exceed Hours
				Conc.	Date			Conc.	Date and Time		
NO	ppb	0.5	93.4%	1.6	12-Dec	-	-	9.6	12/20/2025 7:00 PM	-	-
NO <sub>2</sub>	ppb	3.9	93.4%	8.6	12-Dec	106	0	29.4	12/20/2025 7:00 PM	159	0
NO <sub>x</sub>	ppb	4.3	93.4%	10.3	12-Dec	-	-	39.0	12/20/2025 7:00 PM	-	-
O <sub>3</sub>	ppb	23.2	24.3%	33.4	3-Dec	124 (8 hours)	0	35.1	12/2/2025 8:00 PM	82	0
PM <sub>2.5</sub>	µg/m <sup>3</sup>	5.4	100.0%	13.9	1-Dec	28	0	31.6	12/3/2025 12:00 AM	-	-

SAAQS: Saskatchewan Ambient Air Quality Standards

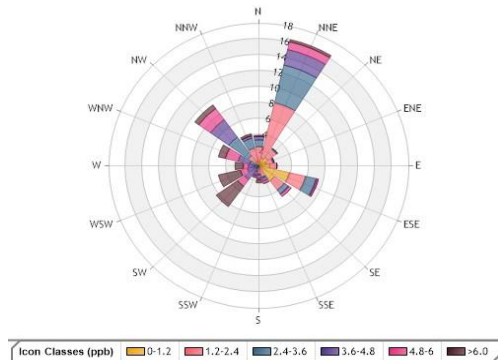


Exceedance Summary										
24-hour Exceedance Information			Summary of other Parameters during Exceedance							
Pollutant	Date	Conc.	WS	WD	Precip.	NO	NO <sub>2</sub>	NO <sub>x</sub>	O <sub>3</sub>	PM <sub>2.5</sub>

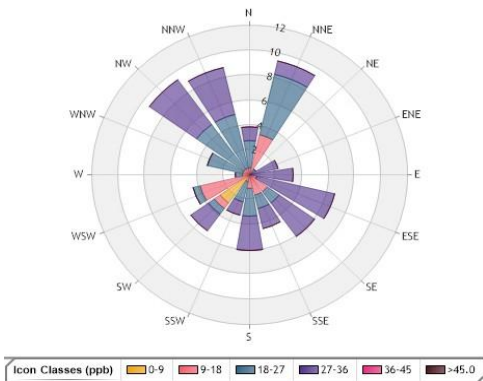
# WYAMZ Meadow Lake Station - November 2025 Summary Report



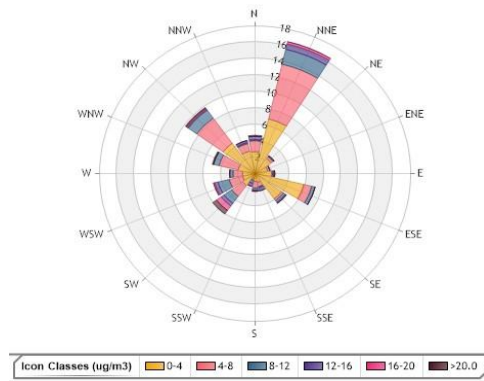
Wind Rose



Pollution Rose NO<sub>2</sub>



Pollution Rose O<sub>3</sub>



Pollution Rose PM<sub>2.5</sub>

Parameters	Unit	Color Code for Wind Speed and Pollutant Conc. Class						
Wind Speed	m/s	0.5-W-1.2	1.2-W-2.4	2.4-W-3.6	3.6-W-4.8	4.8-W-6.0	W > 6.0	
NO <sub>2</sub>	ppb	0.0-C-1.2	1.2-C-2.4	2.4-C-3.6	3.6-C-4.8	4.80-C-6.0	C > 6.0	
O <sub>3</sub>	ppb	0.0-C-9.0	9.0-C-18.0	18.0-C-27.0	27.0-C-36.0	36.0-C-45.0	C > 45.0	
PM <sub>2.5</sub>	µg/m <sup>3</sup>	0.0-C-4.0	4.0-C-8.0	8.0-C-12.0	12.0-C-16.0	16.0-C-20.0	C > 20.0	

## Monthly Update

- \* All data has been zero drift, and baseline corrected, when required. Data may change after final validation process.
- \* All compliance parameters were within the Saskatchewan Ambient Air Quality Standards.
- \* All compliance parameters were more than 90% operational for the month with the exception of O<sub>3</sub>.
- \* O<sub>3</sub> analyzer removed on December 9, 2025 for repair.
- \* The NOx analyzer internal zero drifted higher than expected for several days; however, daily span checks remained within limits and no other indicators of malfunction were observed. Data for this period were flagged but not invalidated. Further investigation will be conducted during the next quarterly visit.
- \* One hour of data was flagged for all gas analyzers due to daily IZS checks, resulting in the loss of one hour of data each day.
- \* Quarterly calibrations were completed on December 9, 2025.

